

MODEL 855, Merrimac
- Socket, Trimmers
Chassis, Parts
Alignment

CROSLEY RADIO CORP.

which is approximately 900 kilocycles less than the fundamental. To check on this increase the output of the signal generator approximately ten times and try to tune in the signal both at the generator frequency as indicated on the station selector dial and at approximately 900 kilocycles below the correct frequency. If the circuits have been properly aligned the signal can be tuned in at both positions but much stronger at the correct position.

To align the "series" trimmer set the signal generator to the frequency indicated and then tune in this signal with the station selector for maximum output. Adjust the "series" trimmer while rocking the tuning condenser back and forth slightly, until no further improvement in output can be obtained.

After the "series" alignment of the broadcast band has been completed it will be necessary to check the "shunt" alignment of that band.

Signal Input Frequencies.

Station	Alignment	Series
American Broadcast Band (BLACK)	450 KC	000 KC
Police and Amateur Band (GREEN)	1400 KC	—
Night H-F Band (RED)	10 Megacycles	—

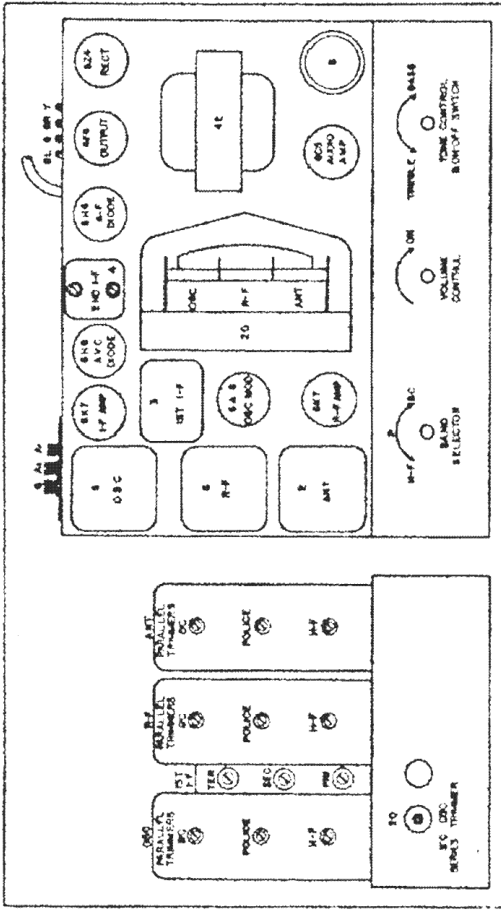


Fig. 2. Top View

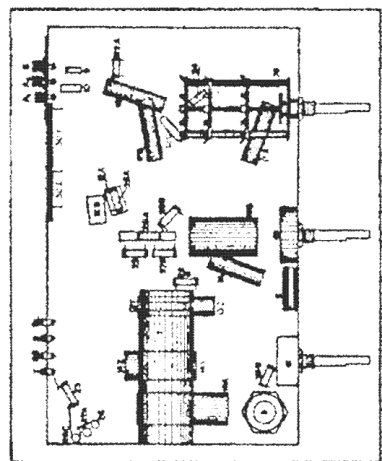


Fig. 3. Bottom View

I-F transformer for maximum output.

(g) Adjust the top and bottom trimmers of the I-F transformer for maximum output.

(h) Repeat operations (f) and (g) for more accurate adjustments.

ALWAYS USE THE LOWEST SIGNAL GENERATOR OUTPUT THAT WILL GIVE A REASONABLE OUTPUT METER READING.

(i) Reduce the output of the signal generator and adjust the middle trimmer on the I-F transformer for maximum output. DO NOT READJUST THE OTHER TRIMMERS.

2. Aligning R-F Amplifier.

(a) When aligning the R-F amplifier the output lead from the signal generator is connected to the "Ant" terminal of the receiver. For the BLACK and GREEN bands a .00025 mfd condenser must be connected in series with the output lead from the signal generator and for the high frequency band a 400 ohm carbon resistor should be used in place of the condenser.

Each band should first be "shunt" aligned and then series aligned (Broadcast band). The band selector switch should be set for the band being aligned and the signal generator should be set to the frequency indicated for each adjustment.

Adjust the "Osc.", "R-F" and "Ant" trimmers in the order given for maximum output and then check the adjustments in the same order. NOTE: When aligning the Police and High Frequency Band care must be exercised so that the circuits will be aligned on the fundamental frequency rather than on the image frequency.

ALIGNMENT PROCEDURES

All the circuits in this receiver are very accurately adjusted at the factory and should need no further adjustment. However, if it is definitely known that an adjustment is necessary the circuits can be properly aligned only with the use of a modulated signal generator and an output meter.

CONNECTING OUTPUT METER

Connect one terminal of the output meter to the plate and the other terminal to the screen of the 6K6 output tube. Be sure the meter is protected from D.C. by connecting a condenser (1 mfd. or larger—not electrolytic) in series with one of the leads.

1. Tuning I-F Amplifier to 450 Kilocycles.

(a) Connect the output of the signal generator through a .02 mfd condenser to the top end of the GAB tube, leaving the tube's grid clip in place. Connect the ground lead from the signal generator to the receiver chassis. KEEP THE GENERATOR OUTPUT LEAD AS FAR AS POSSIBLE FROM THE OTHER SCREEN GRID TUBES.

(b) Set the station selector so that the tuning condenser plates are open. Turn the volume control knob to the "ON" and turn the tone control knob to the left (TREBLE).

(c) Turn the band selector switch all the way to the left.

(d) Set the signal generator to 450 kilocycles.

(e) Close the middle trimmer condenser on the I-F transformer.

(f) Adjust the trimmers located on top of the 2nd.

PARTS LIST—MODEL 855

Part No. Description

Part No.				Description				Part No.				Description			
1A	1B	2		G4	G7	G12	G2	G2	G2	G2	G2	B			
				37134	37135	34000	32000	32000	32000	32000	32000	37004A	37004B	37004C	37004D
				Dial Light Socket Assn.	Dial Light Socket Assn.	Ant. Coil, S. W. Band	Ant. Coil, Police Band	Ant. Coil, Broadcast Band	Ant. Coil, Support Base	Trimmer Condenser Assn.	Coil Shield	Coil Shield	Coil Shield	Coil Shield	Coil Shield
				32004	32005	32006	32007	32008	32009	32010	32011	32012	32013	32014	32015
				2nd I-F Trana.	2nd I-F Trana.	Osc. Coil, S. W. Band	Osc. Coil, B. C. Band	Osc. Coil, R. C. Band	Osc. Coil, P. Band	Coil Support Base	Coil Shield	Coil Shield	Coil Shield	Coil Shield	Coil Shield
				32016	32017	32018	32019	32020	32021	32022	32023	32024	32025	32026	32027
				1st I-F Trana.	1st I-F Trana.	Osc. Coil, S. W. Band	Osc. Coil, B. C. Band	Osc. Coil, R. C. Band	Osc. Coil, P. Band	Coil Support Base	Coil Shield	Coil Shield	Coil Shield	Coil Shield	Coil Shield
				32028	32029	32030	32031	32032	32033	32034	32035	32036	32037	32038	32039
				2nd I-F Trana.	2nd I-F Trana.	Osc. Coil, S. W. Band	Osc. Coil, B. C. Band	Osc. Coil, R. C. Band	Osc. Coil, P. Band	Coil Support Base	Coil Shield	Coil Shield	Coil Shield	Coil Shield	Coil Shield
				32040	32041	32042	32043	32044	32045	32046	32047	32048	32049	32050	32051
				1st I-F Trana.	1st I-F Trana.	Osc. Coil, S. W. Band	Osc. Coil, B. C. Band	Osc. Coil, R. C. Band	Osc. Coil, P. Band	Coil Support Base	Coil Shield	Coil Shield	Coil Shield	Coil Shield	Coil Shield
				32052	32053	32054	32055	32056	32057	32058	32059	32060	32061	32062	32063
				2nd I-F Trana.	2nd I-F Trana.	Osc. Coil, S. W. Band	Osc. Coil, B. C. Band	Osc. Coil, R. C. Band	Osc. Coil, P. Band	Coil Support Base	Coil Shield	Coil Shield	Coil Shield	Coil Shield	Coil Shield
				32064	32065	32066	32067	32068	32069	32070	32071	32072	32073	32074	32075
				1st I-F Trana.	1st I-F Trana.	Osc. Coil, S. W. Band	Osc. Coil, B. C. Band	Osc. Coil, R. C. Band	Osc. Coil, P. Band	Coil Support Base	Coil Shield	Coil Shield	Coil Shield	Coil Shield	Coil Shield
				32076	32077	32078	32079	32080	32081	32082	32083	32084	32085	32086	32087
				2nd I-F Trana.	2nd I-F Trana.	Osc. Coil, S. W. Band	Osc. Coil, B. C. Band	Osc. Coil, R. C. Band	Osc. Coil, P. Band	Coil Support Base	Coil Shield	Coil Shield	Coil Shield	Coil Shield	Coil Shield
				32088	32089	32090	32091	32092	32093	32094	32095	32096	32097	32098	32099
				1st I-F Trana.	1st I-F Trana.	Osc. Coil, S. W. Band	Osc. Coil, B. C. Band	Osc. Coil, R. C. Band	Osc. Coil, P. Band	Coil Support Base	Coil Shield	Coil Shield	Coil Shield	Coil Shield	Coil Shield
				32100	32101	32102	32103	32104	32105	32106	32107	32108	32109	32110	32111
				2nd I-F Trana.	2nd I-F Trana.	Osc. Coil, S. W. Band	Osc. Coil, B. C. Band	Osc. Coil, R. C. Band	Osc. Coil, P. Band	Coil Support Base	Coil Shield	Coil Shield	Coil Shield	Coil Shield	Coil Shield
				32112	32113	32114	32115	32116	32117	32118	32119	32120	32121	32122	32123
				1st I-F Trana.	1st I-F Trana.	Osc. Coil, S. W. Band	Osc. Coil, B. C. Band	Osc. Coil, R. C. Band	Osc. Coil, P. Band	Coil Support Base	Coil Shield	Coil Shield	Coil Shield	Coil Shield	Coil Shield
				32124	32125	32126	32127	32128	32129	32130	32131	32132	32133	32134	32135
				2nd I-F Trana.	2nd I-F Trana.	Osc. Coil, S. W. Band	Osc. Coil, B. C. Band	Osc. Coil, R. C. Band	Osc. Coil, P. Band	Coil Support Base	Coil Shield	Coil Shield	Coil Shield	Coil Shield	Coil Shield
				32136	32137	32138	32139	32140	32141	32142	32143	32144	32145	32146	32147
				1st I-F Trana.	1st I-F Trana.	Osc. Coil, S. W. Band	Osc. Coil, B. C. Band	Osc. Coil, R. C. Band	Osc. Coil, P. Band	Coil Support Base	Coil Shield	Coil Shield	Coil Shield	Coil Shield	Coil Shield
				32148	32149	32150	32151	32152	32153	32154	32155	32156	32157	32158	32159
				2nd I-F Trana.	2nd I-F Trana.	Osc. Coil, S. W. Band	Osc. Coil, B. C. Band	Osc. Coil, R. C. Band	Osc. Coil, P. Band	Coil Support Base	Coil Shield	Coil Shield	Coil Shield	Coil Shield	Coil Shield
				32160	32161	32162	32163	32164	32165	32166	32167	32168	32169	32170	32171
				1st I-F Trana.	1st I-F Trana.	Osc. Coil, S. W. Band	Osc. Coil, B. C. Band	Osc. Coil, R. C. Band	Osc. Coil, P. Band	Coil Support Base	Coil Shield	Coil Shield	Coil Shield	Coil Shield	Coil Shield
				32172	32173	32174	32175	32176	32177	32178	32179	32180	32181	32182	32183
				2nd I-F Trana.	2nd I-F Trana.	Osc. Coil, S. W. Band	Osc. Coil, B. C. Band	Osc. Coil, R. C. Band	Osc. Coil, P. Band	Coil Support Base	Coil Shield	Coil Shield	Coil Shield	Coil Shield	Coil Shield
				32184	32185	32186	32187	32188	32189	32190	32191	32192	32193	32194	32195
				1st I-F Trana.	1st I-F Trana.	Osc. Coil, S. W. Band	Osc. Coil, B. C. Band	Osc. Coil, R. C. Band	Osc. Coil, P. Band	Coil Support Base	Coil Shield	Coil Shield	Coil Shield	Coil Shield	Coil Shield
				32196	32197	32198	32199	32200	32201	32202	32203	32204	32205	32206	32207
				2nd I-F Trana.	2nd I-F Trana.	Osc. Coil, S. W. Band	Osc. Coil, B. C. Band	Osc. Coil, R. C. Band	Osc. Coil, P. Band	Coil Support Base	Coil Shield	Coil Shield	Coil Shield	Coil Shield	Coil Shield
				32208	32209	32210	32211	32212	32213	32214	32215	32216	32217	32218	32219
				1st I-F Trana.	1st I-F Trana.	Osc. Coil, S. W. Band	Osc. Coil, B. C. Band	Osc. Coil, R. C. Band	Osc. Coil, P. Band	Coil Support Base	Coil Shield	Coil Shield	Coil Shield	Coil Shield	Coil Shield
				32220	32221	32222	32223	32224	32225	32226	32227	32228	32229	32230	32231
				2nd I-F Trana.	2nd I-F Trana.	Osc. Coil, S. W. Band	Osc. Coil, B. C. Band	Osc. Coil, R. C. Band	Osc. Coil, P. Band	Coil Support Base	Coil Shield	Coil Shield	Coil Shield	Coil Shield	Coil Shield
				32232	32233	32234	32235	32236	32237	32238	32239	32240	32241	32242	32243
				1st I-F Trana.	1st I-F Trana.	Osc. Coil, S. W. Band	Osc. Coil, B. C. Band	Osc. Coil, R. C. Band	Osc. Coil, P. Band	Coil Support Base	Coil Shield	Coil Shield	Coil Shield	Coil Shield	Coil Shield
				32244	32245	32246	32247	32248	32249	32250	32251	32252	32253	32254	32255
				2nd I-F Trana.	2nd I-F Trana.	Osc. Coil, S. W. Band	Osc. Coil, B. C. Band	Osc. Coil, R. C. Band	Osc. Coil, P. Band	Coil Support Base	Coil Shield	Coil Shield	Coil Shield	Coil Shield	Coil Shield
				32256	32257	32258	32259	32260	32261	32262	32263	32264	32265	32266	32267
				1st I-F Trana.	1st I-F Trana.	Osc. Coil, S. W. Band	Osc. Coil, B. C. Band	Osc. Coil, R. C. Band	Osc. Coil, P. Band	Coil Support Base	Coil Shield	Coil Shield	Coil Shield	Coil Shield	Coil Shield
				32268	32269	32270	32271	32272	32273	32274	32275	32276	32277	32278	32279
				2nd I-F Trana.	2nd I-F Trana.	Osc. Coil, S. W. Band	Osc. Coil, B. C. Band	Osc. Coil, R. C. Band	Osc. Coil, P. Band	Coil Support Base	Coil Shield	Coil Shield	Coil Shield	Coil Shield	Coil Shield
				32280	32281	32282	32283	32284	32285	32286	32287	32288	32289	32290	32291
				1st I-F Trana.	1st I-F Trana.	Osc. Coil, S. W. Band	Osc. Coil, B. C. Band	Osc. Coil, R. C. Band	Osc. Coil, P. Band	Coil Support Base	Coil Shield	Coil Shield	Coil Shield	Coil Shield	Coil Shield
				32292	32293	32294	32295	32296	32297	32298	32299	32300	32301	32302	32303
				2nd I-F Trana.	2nd I-F Trana.	Osc. Coil, S. W. Band	Osc. Coil, B. C. Band	Osc. Coil, R. C. Band	Osc. Coil, P. Band	Coil Support Base	Coil Shield	Coil Shield	Coil Shield	Coil Shield	Coil Shield
				32304	32305	32306	32307	32308	32309	32310	32311	32312	32313	32314	32315
				1st I-F Trana.	1st I-F Trana.	Osc. Coil, S. W. Band	Osc. Coil, B. C. Band	Osc. Coil, R. C. Band	Osc. Coil, P. Band	Coil Support Base	Coil Shield	Coil Shield	Coil Shield	Coil Shield	Coil Shield
				32316	32317	32318	32319	32320	32321	32322	32323	32324	32325	32326	32327
				2nd I-F Trana.	2nd I-F Trana.	Osc. Coil, S. W. Band	Osc. Coil, B. C. Band	Osc. Coil, R. C. Band	Osc. Coil, P. Band	Coil Support Base	Coil Shield	Coil Shield	Coil Shield	Coil Shield	Coil Shield
				32328	32329	32330	32331	32332	32333	32334	32335	32336	32337	32338	32339
				1st I-F Trana.	1st I-F Trana.	Osc. Coil, S. W. Band	Osc. Coil, B. C. Band	Osc. Coil, R. C. Band	Osc. Coil, P. Band	Coil Support Base	Coil Shield	Coil Shield	Coil Shield	Coil Shield	Coil Shield
				32340	32341	32342	32343	32344	32345	32346	32347	32348	32349	32350	32351
				2nd I-F Trana.	2nd I-F Trana.	Osc. Coil, S. W. Band	Osc. Coil, B. C. Band	Osc. Coil, R. C. Band	Osc. Coil, P. Band	Coil Support Base	Coil Shield	Coil Shield	Coil Shield	Coil Shield	Coil Shield
				32352	32353	32354	32355	32356	32357	32358	32359	32360	32361	32362	32363
				1st I-F Trana.	1st I-F Trana.	Osc. Coil, S. W. Band	Osc. Coil, B. C. Band	Osc. Coil, R. C. Band	Osc. Coil, P. Band	Coil Support Base	Coil Shield	Coil Shield	Coil Shield	Coil Shield	Coil Shield
				32364	32365	32366	32367	32368	32369	32370	32371	32372	32373	32374	32375
				2nd I-F Trana.	2nd I-F Trana.	Osc. Coil, S. W. Band	Osc. Coil, B. C. Band	Osc. Coil, R. C. Band	Osc. Coil, P. Band	Coil Support Base	Coil Shield	Coil Shield	Coil Shield	Coil Shield	Coil Shield
				32376	32377	32378	32379	32380	32381	32382	32383	32384	32385	32386	32387
				1st I-F Trana.	1st I-F Trana.	Osc. Coil, S. W. Band	Osc. Coil, B. C. Band	Osc. Coil, R. C. Band	Osc. Coil, P. Band	Coil Support Base	Coil Shield	Coil Shield	Coil Shield	Coil Shield	Coil Shield
				32388	32389	32390	32391	32392	32393	32394	32395	32396	32397	32398	32399
				2nd I-F Trana.	2nd I-F Trana.	Osc. Coil, S. W. Band	Osc. Coil, B. C. Band	Osc. Coil, R. C. Band	Osc. Coil, P. Band	Coil Support Base	Coil Shield	Coil Shield	Coil Shield	Coil Shield	Coil Shield
				32400	32401	32402	32403	32404	32405	32406	32407	32408	32409	32410	32411
				1st I-F Trana.	1st I-F Trana.	Osc. Coil, S. W. Band	Osc. Coil, B. C. Band	Osc. Coil, R. C. Band	Osc. Coil, P. Band	Coil Support Base	Coil Shield	Coil Shield	Coil Shield	Coil Shield	Coil Shield
				32412	32413	32414	32415	32416	32417	32418	32419	32420	32421	32422	32423
				2nd I-F Trana.	2nd I-F Trana.	Osc. Coil, S. W. Band	Osc. Coil, B. C. Band	Osc. Coil, R. C. Band	Osc. Coil, P. Band	Coil Support Base	Coil Shield	Coil Shield	Coil Shield	Coil Shield	Coil Shield
				32424	32425	32426	32427	32428	32429	32430	32431	32432	32433	32434	32435
				1st I-F Trana.	1st I-F Trana.	Osc. Coil, S. W. Band	Osc. Coil, B. C. Band	Osc. Coil, R. C. Band	Osc. Coil, P. Band	Coil Support Base	Coil Shield	Coil Shield	Coil Shield	Coil Shield	Coil Shield
				32436	32437	32438	32439	32440	32441	32442	32443	32444	32445	32446	32447
				2nd I-F Trana.	2nd I-F Trana.	Osc. Coil, S. W. Band	Osc. Coil, B. C. Band	Osc. Coil, R. C. Band	Osc. Coil, P. Band	Coil Support Base	Coil Shield	Coil Shield	Coil Shield	Coil Shield	Coil Shield
				32448	32449	32450	32451	32452	32453	32454	32455	32456	32457	32458	32459
				1st I-F Trana.	1st I-F Trana.	Osc. Coil, S. W. Band	Osc. Coil, B. C. Band	Osc. Coil, R. C. Band	Osc. Coil, P. Band	Coil Support Base	Coil Shield	Coil Shield	Coil Shield	Coil Shield	Coil Shield
				32460	32461	32462	32463	32464	32465	32466	32467	32468	32469	32470	32471
				2nd I-F Trana.	2nd I-F Trana.	Osc. Coil, S. W. Band	Osc. Coil, B. C. Band	Osc. Coil, R. C. Band	Osc. Coil, P. Band	Coil Support Base	Coil Shield	Coil Shield	Coil Shield	Coil Shield	Coil Shield
				32472	32473	32474	32475	32476	32477	32478	32479	32480	32481	32482	32483
				1st I-F Trana.	1st I-F Trana.	Osc. Coil, S. W. Band	Osc. Coil, B. C. Band	Osc. Coil, R. C. Band	Osc. Coil, P. Band	Coil Support Base	Coil Shield	Coil Shield	Coil Shield	Coil Shield	Coil Shield
				32484	32485	32486	32487	32488	32489	32490	32491	32492	32493	32494	32495
				2nd I-F Trana.	2nd I-F Trana.	Osc. Coil, S. W. Band	Osc. Coil, B. C. Band	Osc. Coil, R. C. Band	Osc. Coil, P. Band	Coil Support Base	Coil Shield	Coil Shield	Coil Shield	Coil Shield	Coil Shield
				32496	32497	32498	32499	32500	32501	32502	32503	32504	32505	32506	32507
				1st I-F Trana.	1st I-F Trana.	Osc. Coil, S. W. Band	Osc. Coil, B. C. Band	Osc. Coil, R. C. Band	Osc. Coil, P. Band	Coil Support Base	Coil Shield	Coil Shield	Coil Shield	Coil Shield	Coil