

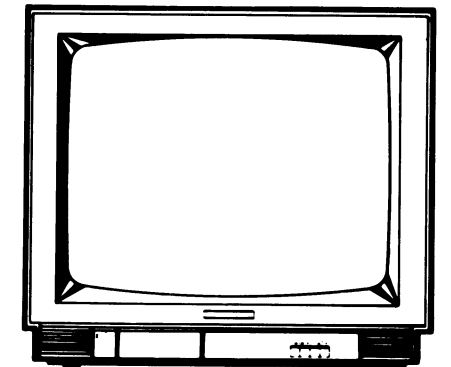
# GoldStar

## COLOUR TV SERVICE MANUAL

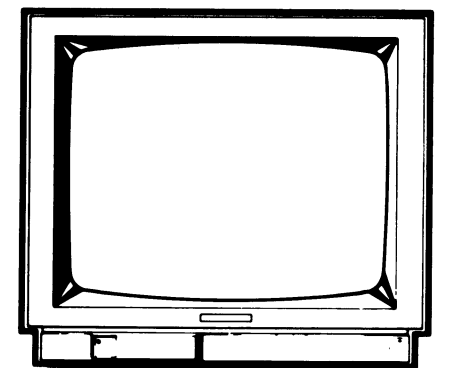
**CAUTION**  
BEFORE SERVICING THE CHASSIS, READ THE "SAFETY PRECAUTIONS" IN THIS MANUAL.

Since this service manual (NO.483-666N) deals with the parts list of the model CKT-9742/45 only and service manual NO.483-566Z has common information for PC-91A chassis except the parts list, if you want to know any information for PC-91A chassis before servicing, you should refer to the service manual NO.483-566Z.

**CKT-9742**



**CKT-9745**



**CHASSIS: PC-91A**  
**MODEL : CKT-9742**  
**CKT-9745**



**GoldStar**

5

## SAFETY PRECAUTIONS

**WARNING:** BEFORE SERVICING THIS CHASSIS, READ THE "X-RAY RADIATION PRECAUTIONS", "SAFETY INSTRUCTIONS" AND "PRODUCT SAFETY NOTICE" DESCRIBED BELOW.

### X-RAY RADIATION PRECAUTIONS

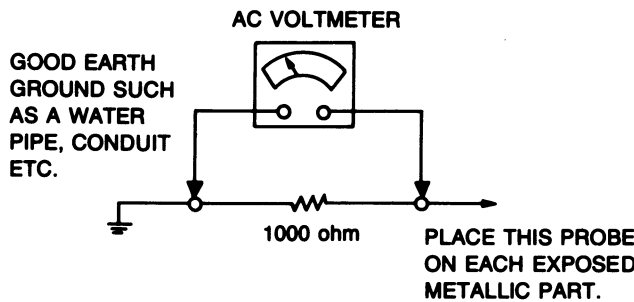
1. Excessive high voltage can produce potentially hazardous X-RAY RADIATION. To avoid such hazards, the high voltage must not be above the specified limit. The nominal value of the high voltage of this receiver is  $24 \pm 1.5$  kV at High beam current (maximun brightness) under specified power source. The high voltage must not under any circumstances, exceed 27.5 KV. Each time a receiver requires servicing, the high voltage should be checked. It is recommended the reading of the high voltage be recorded as a part of the service record. It is important to use an accurate and reliable high voltage meter.
2. The only source of X-RAY RADIATION in this TV receiver is the picture tube. For continued X-RAY RADIATION protection, the replacement tube must be exactly the same type tube as specified in the parts list.
3. Some parts in this receiver have special safety-related characteristics for X-RAY RADIATION protection. For continued safety, parts replacement should be undertaken only after referring to the PRODUCT SAFETY NOTICE below.

### SAFETY INSTRUCTIONS

1. Potentials as high as 25,000—27,000 volts are present when this receiver is operating. Operation of the receiver outside the cabinet or with the back cover removed involves a shock hazard from the receiver.
  - (1) Servicing should not be attempted by anyone who is not thoroughly familiar with the precautions necessary when working on high-voltage equipment.
  - (2) Always discharge the picture tube anode to the CHASSIS GROUND to reduce the shock hazard before removing the anode cap.
  - (3) Perfectly discharge the high potential of the picture tube before handling.  
(WARNING: Risk of implosion. Handle with care.)
2. If any Fuse in this TV receiver is blown, replace it with the FUSE specified in the chassis parts list only.
3. When replacing parts or circuit boards, wind the lead wires around terminals before soldering.
4. When replacing a high wattage resistor (oxide metal film resistor) in circuit board, keep the resistor 10 mm. away from circuit board.
5. Keep wires away from high voltage or high temperature components.
6. This TV receiver should be connected to AC 220 V.
7. Before returning the set to the customer, always perform an AC leakage current check on the exposed metallic parts

of the cabinet, such as antennas, terminals, screwheads, metal overlays, control shafts, etc., to be sure the set is safe to operate without danger of electrical shock. Plug the AC line cord directly into a 220 V AC outlet. (Do not use a line isolation transformer during this check). Use an AC voltmeter having 1000 ohms per volt or more sensitivity in the following manner.

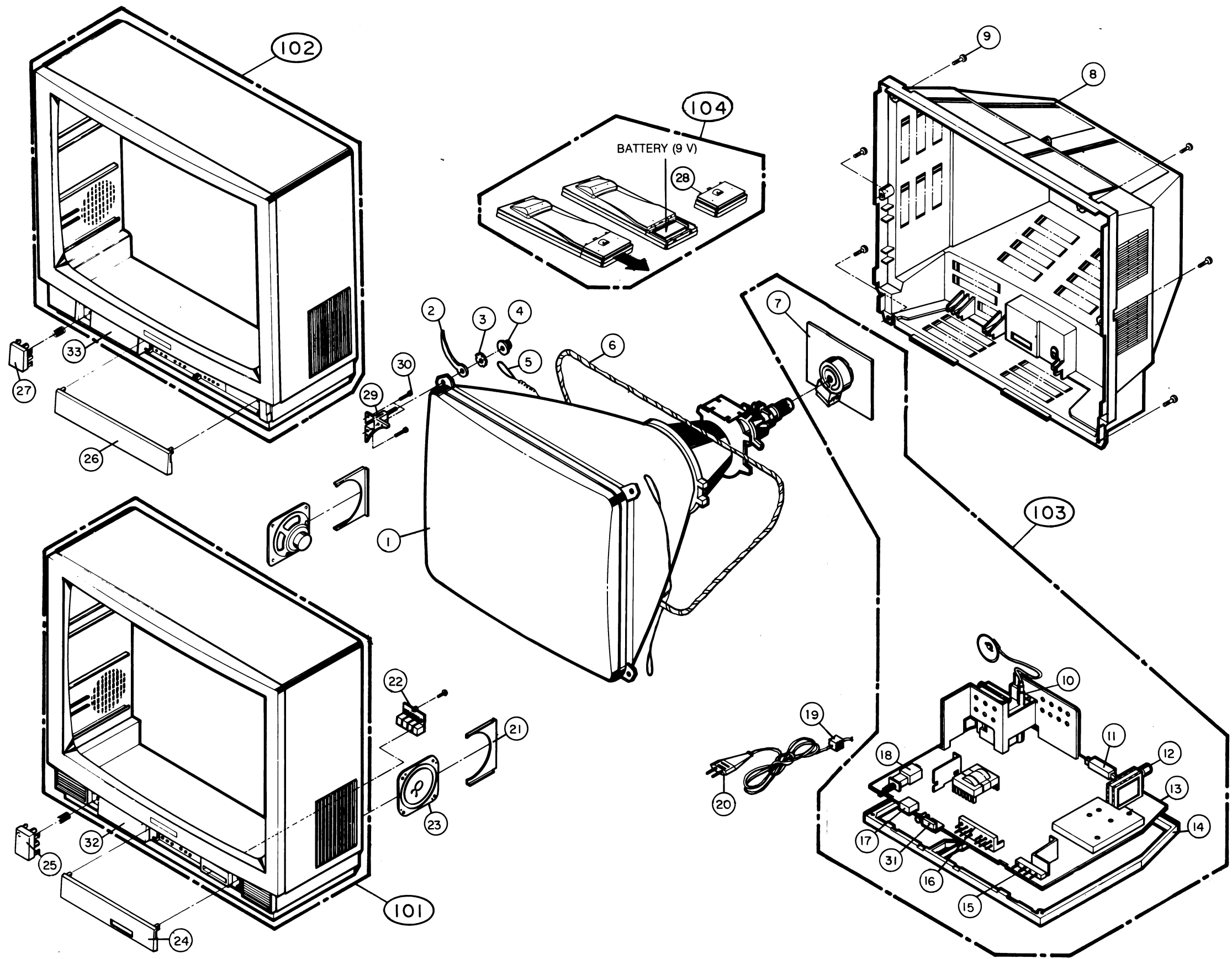
Connect a 1000 ohm resistor between a known good earth ground, (water pipe, conduit, etc.) and the exposed metallic parts, one at a time. Measure the AC voltage across the combination of 1000 ohm resistor. Reverse the AC plug at the AC outlet and repeat AC voltage measurements for each exposed metallic part. Voltage measured must not exceed 1 volt RMS. This corresponds to 1 mA. AC. Any value exceeding this limit constitutes a potential shock hazard and must be corrected immediately.



### PRODUCT SAFETY NOTICE

Many electrical and mechanical parts in this chassis have special safety-related characteristics. These characteristics are often passed unnoticed by a visual inspection and the X-RAY RADIATION protection afforded by them cannot necessarily be obtained by using replacement components rated for higher voltage, wattage, etc. Replacement parts which have these special safety characteristics are identified by  $\triangle$  marks on the schematic diagram and the replacement parts list. Before replacing any of these components, read the parts list in this manual carefully. The use of substitute replacement parts which do not have the same safety characteristics as specified in the parts list may create X-RAY RADIATION. And then use specified parts only when replacing.

EXPLODED VIEW



SP : Serviceable Parts List  
NSP : Not Serviceable Parts List

NO	DESCRIPTION	PART-NO	REMARKS
1	CPT, A48KCS12XX 25R7BE	2055-V0081A	SP
2	HOLDER, METAL ASSY	341-335A	NSP
3	WASHER, CPT FIXING	334-039A	NSP
4	NUT, HNW508	03120104	NSP
5	LEAD SET, EARTH	170-326T	NSP
6	COIL, DEGAUSSING	150-276B	NSP
7	PCB ASSY, CPT	110-A31P	SP
8	COVER ASSY, BACK	303-C74C	SP
9	SCREW(TTS+ * 16)	03232305	SP
10	FBT	154-177B	SP
11	21 PIN PERI-SOCKET	381-090A	SP
12	TUNER	113-105H	SP
13	PCB ASSY, MAIN(RAZNO)	110-K32A	SP
	PCB ASSY, MAIN (HYUNDAI, WITH-BY)	110-K32D	SP
14	FRAME, MAIN	312-258A	SP
15	SWITCH, 4 KEYS	140-219A	SP
16	SWITCH, 12 KEY	140-177A	SP
17	PRE-AMP	106-042A	SP
18	SWITCH, MAIN	140-278A	SP
19	HOLDER, POWER CORD	341-242F	SP
20	CORD, POWER ASSY	174-171F	SP
21	SUPPORTER, SPEAKER	343-544B	NSP
22	BUTTON, CH.VOLUME	441-109A	SP
23	SPEAKER ASSY	120-C26A	SP
24	DOOR, CONTROL(CKT-9742)	315-401A	SP
25	BUTTON, POWER(CKT-9742)	441-110A	SP
26	DOOR, CONTROL(CKT-9745)	315-402A	SP
27	BOTTON, POWER(CKT-9745)	441-111B	SP
28	BATTERY COVER, REMOTE CONTROL	303-C58B	SP
29	METAL, CPT FIXING	430-603A	NSP
30	SCREW, TTS1 + * 16	03232305	NSP
31	LED DISPLAY ASSY	262-006A	SP
32	WINDOW, LED DISPLAY	316-229A	SP
33	WINDOW, DISPLAY	316-230A	SP

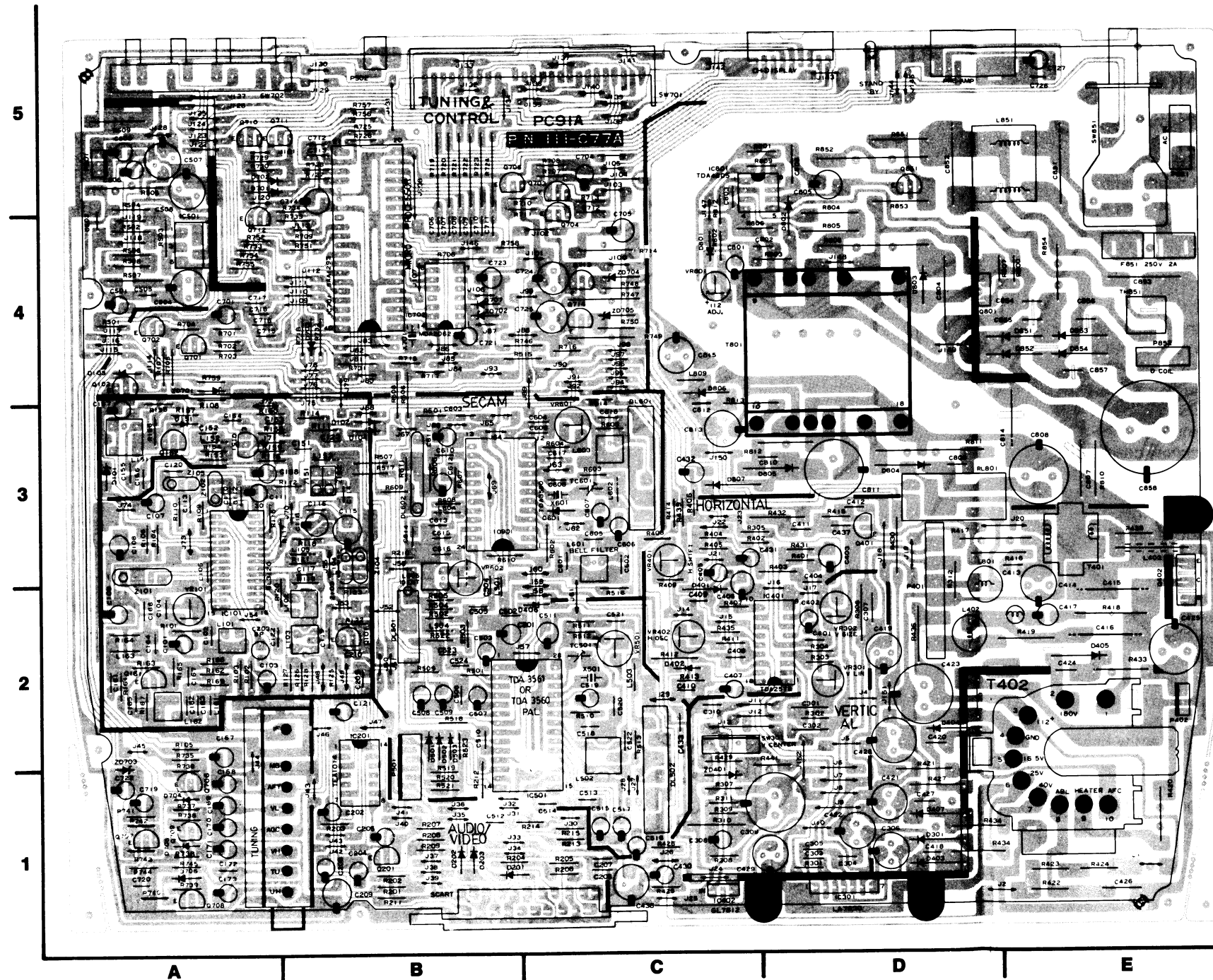
SUB ASSY

101	CABINET ASSY, FRONT (CKT-9742)	300-819A	SP
102	CABINET ASSY, FRONT (CKT-9745)	300-820A	SP
103	CHASSIS ASSY, MAIN(RAZNO)	309-741A	SP
	CHASSIS ASSY, MAIN (HYUNDAI, WITH-BY)	309-741D	SP
104	REMOTE CONTROL	105-045H	SP

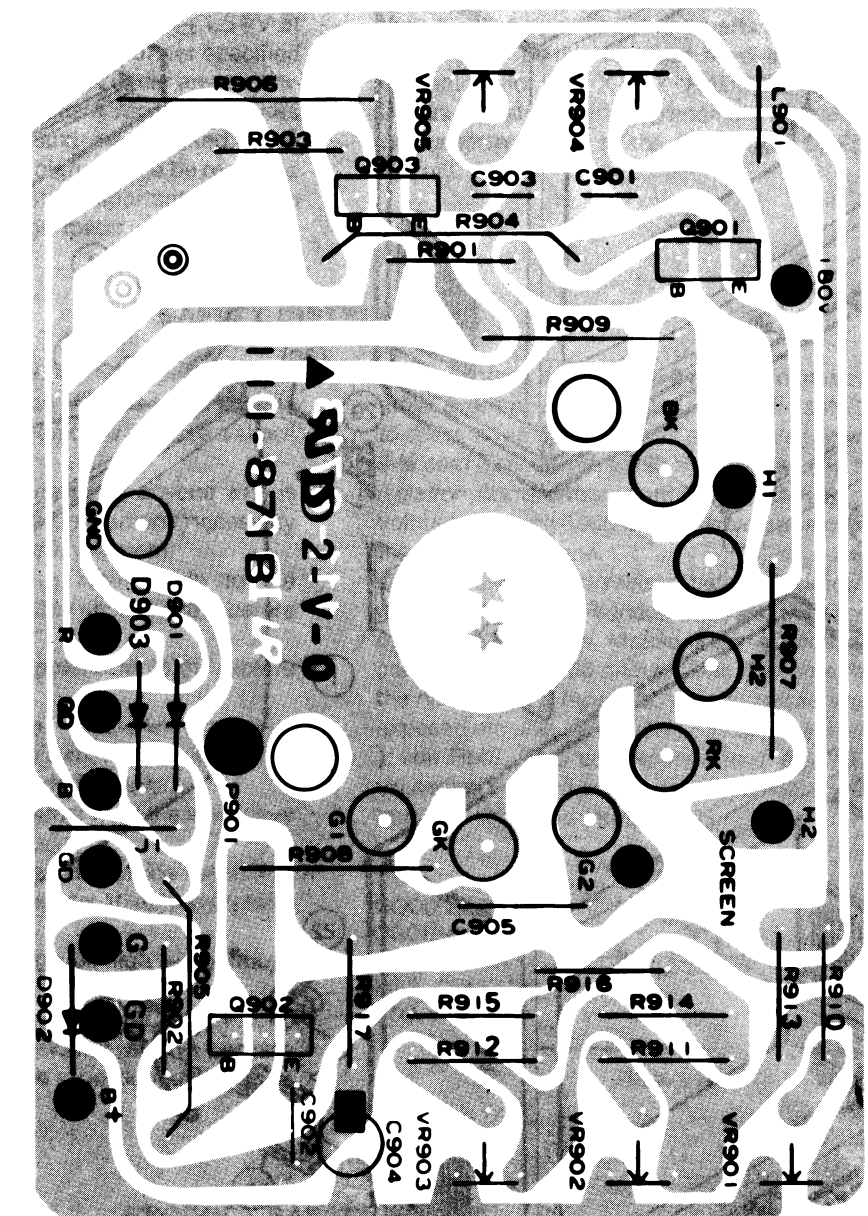
In this exploded view, some figures may differ from your actual TV a little. But each part on this page and the replacement parts list has a correct part NO.

# PRINTED CIRCUIT BOARD

MAIN P.C. Board (Component Side)



CPT P.C. Board (Component Side)



# COMPONENT LOCATION GUIDE

(Refer to page 5-6)

R101 ..... 2A	R207 ..... 1B	R428 ..... 3E	R704 ..... 4A	R751 ..... 4A	C103 ..... 2A	C208 ..... 1B	C501 ..... 2B	C708 ..... 4B	CS05 ..... 4A	D402 ..... 2C	Q707 ..... 1A
R102 ..... 2A	R208 ..... 1B	R429 ..... 1C	R705 ..... 4A	R752 ..... 4A	C104 ..... 2A	C209 ..... 1B	C502 ..... 2B	C709 ..... 4B	CS06 ..... 5A	D403 ..... 1D	Q708 ..... 1A
R103 ..... 2A	R209 ..... 1B	R430 ..... 3D	R706 ..... 4B	R753 ..... 4A	C106 ..... 2A	C210 ..... 2B	C503 ..... 2B	C710 ..... 4B	CS07 ..... 5A	D404 ..... 2D	Q709 ..... 1A
R104 ..... 3A	R210 ..... 3B	R431 ..... 3D	R707 ..... 5C	R754 ..... 4A	C107 ..... 3A	C301 ..... 2D	C504 ..... 2B	C711 ..... 4B	CS08 ..... 5A	D405 ..... 2E	Q710 ..... 5A
R105 ..... 1A	R211 ..... 1B	R432 ..... 3D	R708 ..... 5C	R755 ..... 4A	C108 ..... 3A	C302 ..... 2D	C505 ..... 2B	C712 ..... 5B	TS501 ..... 2C	D406 ..... 2B	Q711 ..... 5A
R106 ..... 3A	R212 ..... 1B	R433 ..... 2E	R709 ..... 4A	R756 ..... 4B	C109 ..... 2A	C303 ..... 1D	C506 ..... 2B	C713 ..... 5B	TS601 ..... 3C	D407 ..... 1D	Q712 ..... 4A
R107 ..... 4A	R213 ..... 1C	R434 ..... 1D	R710 ..... 5B	R757 ..... 5B	C110 ..... 3A	C304 ..... 1D	C507 ..... 2B	C714 ..... 5B	L101 ..... 2A	D501 ..... 1B	Q713 ..... 4C
R108 ..... 3A	R214 ..... 1B	R435 ..... 2C	R711 ..... 5B	R758 ..... 5B	C111 ..... 3A	C305 ..... 1D	C508 ..... 2B	C715 ..... 4A	L102 ..... 2A	D502 ..... 1B	Q714 ..... 4C
R109 ..... 3A	R215 ..... 1C	R436 ..... 2D	R712 ..... 5C	R759 ..... 4A	C112 ..... 3A	C306 ..... 1D	C509 ..... 2B	C716 ..... 4A	L103 ..... 2A	D503 ..... 1B	Q801 ..... 4D
R110 ..... 3A	R301 ..... 1D	R439 ..... 3C	R713 ..... 5C	R800 ..... 4E	C113 ..... 3A	C307 ..... 2D	C510 ..... 1B	C717 ..... 4A	L104 ..... 2B	D701 ..... 5A	Q851 ..... 5D
R111 ..... 3B	R302 ..... 2D	R441 ..... 1D	R714 ..... 4C	R801 ..... 5C	C114 ..... 3B	C308 ..... 1C	C511 ..... 2C	C718 ..... 4A	L105 ..... 3A	D702 ..... 5A	IC101 ..... 2A
R112 ..... 3A	R303 ..... 2D	R501 ..... 2B	R715 ..... 4B	R802 ..... 4C	C115 ..... 3B	C309 ..... 1C	C512 ..... 1B	C719 ..... 1A	L151 ..... 3A	D703 ..... 4A	IC201 ..... 1B
R114 ..... 3A	R304 ..... 2D	R502 ..... 2B	R716 ..... 4C	R803 ..... 4D	C116 ..... 3B	C310 ..... 2C	C513 ..... 1C	C720 ..... 1A	L152 ..... 3A	D704 ..... 1A	IC301 ..... 1D
R115 ..... 3A	R305 ..... 3C	R503 ..... 2B	R717 ..... 4B	R804 ..... 5D	C117 ..... 2A	C401 ..... 2D	C514 ..... 1C	C721 ..... 4B	L153 ..... 3B	D705 ..... 1A	IC401 ..... 2D
R116 ..... 3A	R306 ..... 2D	R504 ..... 2B	R718 ..... 4A	R805 ..... 4D	C118 ..... 3A	C402 ..... 2D	C515 ..... 1C	C722 ..... 1A	L161 ..... 2A	D706 ..... 1A	IC402 ..... 1C
R117 ..... 3A	R307 ..... 1C	R505 ..... 2B	R719 ..... 5B	R806 ..... 4C	C119 ..... 2B	C403 ..... 3D	C516 ..... 1C	C723 ..... 4B	L162 ..... 2A	D707 ..... 4B	IC501 ..... 1B
R118 ..... 3A	R308 ..... 1C	R506 ..... 3B	R720 ..... 5B	R807 ..... 4E	C120 ..... 3A	C404 ..... 2D	C517 ..... 1C	C724 ..... 4B	L163 ..... 2A	D801 ..... 4C	IC601 ..... 3B
R119 ..... 2A	R309 ..... 1C	R507 ..... 3B	R721 ..... 5B	R808 ..... 4D	C121 ..... 2B	C405 ..... 2C	C518 ..... 2C	C725 ..... 4B	L402 ..... 2D	D802 ..... 4D	IC701 ..... 4B
R120 ..... 2A	R310 ..... 1C	R508 ..... 3B	R722 ..... 5B	R809 ..... 5C	C122 ..... 2A	C406 ..... 2C	C519 ..... 2C	C726 ..... 5E	L403 ..... 3E	D803 ..... 4D	IC702 ..... 4B
R121 ..... 3A	R311 ..... 1C	R509 ..... 2B	R723 ..... 5B	R810 ..... 3E	C123 ..... 3B	C407 ..... 2C	C520 ..... 2C	C727 ..... 5E	L501 ..... 2B	D804 ..... 3D	IC801 ..... 5C
R122 ..... 2B	R312 ..... 2D	R510 ..... 2C	R724 ..... 5B	R811 ..... 3D	C151 ..... 3A	C408 ..... 2C	C521 ..... 2C	C801 ..... 4C	L502 ..... 1C	D805 ..... 3C	ICS01 ..... 4A
R123 ..... 2B	R401 ..... 3D	R511 ..... 2C	R725 ..... 5B	R812 ..... 3C	C152 ..... 3A	C409 ..... 2C	C522 ..... 1C	C802 ..... 4C	L503 ..... 2C	D806 ..... 4C	SW301 ..... 1C
R125 ..... 2B	R402 ..... 3C	R513 ..... 1C	R726 ..... 5B	R813 ..... 3C	C153 ..... 3A	C410 ..... 2C	C523 ..... 2B	C803 ..... 5C	L504 ..... 2B	D807 ..... 3C	SW701 ..... 5C
R126 ..... 2A	R403 ..... 2D	R514 ..... 3C	R727 ..... 5B	R851 ..... 5D	C154 ..... 3A	C411 ..... 3D	C524 ..... 2B	C804 ..... 4D	L601 ..... 3C	D851 ..... 4E	SW702 ..... 5A
R127 ..... 2A	R404 ..... 3C	R515 ..... 4B	R728 ..... 5B	R852 ..... 5D	C155 ..... 3A	C412 ..... 3D	C601 ..... 3C	C805 ..... 5D	L602 ..... 3C	D852 ..... 4E	SW851 ..... 5E
R128 ..... 2A	R405 ..... 3C	R516 ..... 2C	R729 ..... 5A	R853 ..... 5D	C156 ..... 3A	C413 ..... 2E	C602 ..... 3C	C806 ..... 5D	L603 ..... 3C	D853 ..... 4E	X501 ..... 2C
R153 ..... 3A	R406 ..... 3C	R517 ..... 3B	R730 ..... 5A	R854 ..... 4E	C157 ..... 3A	C414 ..... 2E	C603 ..... 3B	C807 ..... 3E	L604 ..... 3B	D854 ..... 4E	X601 ..... 3C
R154 ..... 3A	R407 ..... 2C	R518 ..... 2B	R731 ..... 4B	RS01 ..... 4A	C158 ..... 3A	C415 ..... 2E	C604 ..... 3C	C808 ..... 3E	L605 ..... 2B	ZD401 ..... 1C	X701 ..... 4B
R155 ..... 3A	R408 ..... 3C	R519 ..... 1B	R732 ..... 4B	RS02 ..... 4A	C161 ..... 2A	C416 ..... 2E	C605 ..... 3C	C809 ..... 3D	L801 ..... 2D	ZD701 ..... 4A	TH851 ..... 4E
R156 ..... 3A	R409 ..... 2C	R520 ..... 1B	R733 ..... 5A	RS03 ..... 4A	C162 ..... 2A	C417 ..... 3E	C606 ..... 3C	C810 ..... 3C	L851 ..... 5E	ZD702 ..... 4B	Z101 ..... 2A
R157 ..... 3A	R411 ..... 2C	R521 ..... 1B	R734 ..... 5A	RS04 ..... 5A	C163 ..... 2A	C418 ..... 1D	C607 ..... 3C	C811 ..... 3D	L809 ..... 4C	ZD703 ..... 1A	Z102 ..... 3A
R158 ..... 3A	R412 ..... 2C	R522 ..... 2B	R735 ..... 1A	RS05 ..... 5A	C164 ..... 2A	C420 ..... 1D	C608 ..... 3C	C812 ..... 3C	DL501 ..... 2B	ZD705 ..... 4C	Z103 ..... 2B
R159 ..... 3A	R413 ..... 2C	R523 ..... 1B	R736 ..... 1A	RS06 ..... 4A	C165 ..... 2A	C421 ..... 1D	C609 ..... 3C	C813 ..... 3C	DL502 ..... 1C	Q101 ..... 2B	Z104 ..... 2B
R160 ..... 3A	R414 ..... 3C	R601 ..... 3B	R737 ..... 1A	RS07 ..... 4A	C166 ..... 2A	C422 ..... 1D	C610 ..... 3B	C814 ..... 3E	DL601 ..... 3C	Q102 ..... 4A	Z105 ..... 3A
R161 ..... 2A	R415 ..... 3D	R602 ..... 3C	R738 ..... 1A	RS08 ..... 4A	C167 ..... 1A	C423 ..... 2D	C611 ..... 3B	C815 ..... 4C	T401 ..... 3E	Q151 ..... 3A	Z151 ..... 3B
R163 ..... 2A	R416 ..... 3E	R603 ..... 3C	R739 ..... 1A	RS09 ..... 5A	C168 ..... 1A	C424 ..... 2E	C612 ..... 3B	C851 ..... 5E	T402 ..... 1E	Q152 ..... 3A	Z152 ..... 3B
R164 ..... 2A	R417 ..... 3D	R604 ..... 3C	R740 ..... 1A	VR101 ..... 2A	C169 ..... 1A	C425 ..... 2E	C613 ..... 3B	C852 ..... 5D	T801 ..... 4D	Q151 ..... 3A	P401 ..... 2D
R165 ..... 2A	R418 ..... 2E	R605 ..... 3C	R741 ..... 1A	VR301 ..... 2A	C170 ..... 1A	C426 ..... 1E	C614 ..... 3B	C853 ..... 4E	D101 ..... 3A	Q161 ..... 2A	P402 ..... 2E
R166 ..... 2A	R419 ..... 2E	R606 ..... 3B	R742 ..... 1A	VR302 ..... 2D	C171 ..... 1A	C427 ..... 1D	C615 ..... 3B	C854 ..... 4E	D102 ..... 3B	Q201 ..... 1B	P501 ..... 1B
R167 ..... 2A	R420 ..... 1E	R607 ..... 3B	R743 ..... 1A	VR401 ..... 3C	C172 ..... 1A	C428 ..... 1D	C616 ..... 3B	C855 ..... 4E	D103 ..... 4A	Q401 ..... 3D	P851 ..... 5E
R169 ..... 2A	R421 ..... 1D	R608 ..... 3B	R744 ..... 1A	VR402 ..... 2C	C173 ..... 1A	C429 ..... 1C	C617 ..... 3C	C856 ..... 4E	D104 ..... 3B	Q402 ..... 2E	P852 ..... 4E
R201 ..... 1B	R422 ..... 1E	R609 ..... 3B	R745 ..... 1A	VR501 ..... 2C	C202 ..... 1B	C430 ..... 1C	C618 ..... 3C	C857 ..... 4E	D151 ..... 3A	Q701 ..... 4A	PS01 ..... 5A
R202 ..... 1B	R423 ..... 1E	R610 ..... 3B	R746 ..... 4B	VR601 ..... 3C	C203 ..... 2A	C431 ..... 3C	C701 ..... 4A	C858 ..... 3E	D201 ..... 1B	Q702 ..... 4A	PS02 ..... 5B
R203 ..... 1B	R424 ..... 1E	R611 ..... 3B	R747 ..... 4C	VR602 ..... 2B	C204 ..... 1B	C432 ..... 3C	C704 ..... 5C	CS01 ..... 4A	D202 ..... 1B	Q703 ..... 5C	RL801 ..... 3D
R204 ..... 1B	R425 ..... 1C	R701 ..... 4A	R748 ..... 4C	VR801 ..... 4C	C205 ..... 1B	C433 ..... 2D	C705 ..... 4C	CS02 ..... 4A	D203 ..... 1B	Q704 ..... 5C	SCART ..... 1B
R205 ..... 1C	R426 ..... 1C	R702 ..... 4A	R749 ..... 4C	C101 ..... 2A	C206 ..... 1C	C437 ..... 3D	C706 ..... 4B	CS03 ..... 5A	D301 ..... 1D	Q705 ..... 5B	SOCKET .....
R206 ..... 1C	R427 ..... 1D	R703 ..... 4A	R750 ..... 4C	C102 ..... 2A	C207 ..... 1C	C438 ..... 1C	C707 ..... 4B	CS04 ..... 4A	D401 ..... 2C	Q706 ..... 1A	F851 ..... 4F



MODEL : CKT-9742 / CKT-9745

BUYER NAME

RUN-DATE : 90.03.14

**CAUTION** : 1. Before replacing any of these components, read carefully the "SAFETY PRECAUTIONS" on page 2. Do not degrade the safety of the receiver through improper servicing.

2. When ordering the service parts, put this service manual NO., page and your requesting parts NO. on your document correctly, please. Then, we'll send the parts to you faster.

S	AL	LOCA.NO	PART NO(GS)	DESCRIPTION	SPECIFICATION	REMARKS
			110-K32A/D	PCB ASSY	MAIN (PC91A B/G,D/K)	
			371-687A	PACKING	BOTTOM CBT-9742	
			489-532C	KIT PRINTING	(CKT-9742 UPGRG)	
			300-820A	CABINET ASSY	CBT-9745	
			174-003L	CORD	POWER K-KDK 2400	
			372-H21L	BOX	INNER(9745)	
			371-688L	PACKING	BOTTOM(9745)	
			341-242F	HOLDER	POWER CORD	
			105-045H	TRANSMITTER	(T-22)	
			316-229A	WINDOW ASSY.	DISPLAY	
			166-015F	RESONATOR	CSB455EBL(LONG LEAD)	
			153-051C	DY	20-PL P3	
			174-171F	CORD ASSY.	POWER(PC91A) W/O FILTER	
			343-544B	SUPPORTER	SPEAKER	
			106-042A	PRE-AMP	ITT VS (SAA 1293)	
			2055-V0081A	CPT	A48KCS12XX 03N7KE	
			309-741A/D	CHASSIS ASSY	PC91A PAL/SECAM B/G,D/K	
			120-035H	SPEAKER	(090A21-864K14)	
			303-C58B	COVER	BATTERY(T-22,9V)	
			312-258A	FRAME	MAIN CHASSIS (PC91A)	
			303-C74C	COVER ASSY.	BACK	
			371-686A	PACKING	TOP CBT-9742/9745	
			315-401A	DOOR ASSY.	CONTROL	
			410-552A	MARK	BRAND	
			120-C26A	SPEAKER ASSY.	CBT-9742	
			113-105H	TUNER	VTSA-1SDH WITH CABLE(VE)	
			372-H34N	BOX	INNER,CKT-9742 UPGRG	
			132-204C	ANTENNA ASSY	ROD(3 SECT.,F/L 650)	
			2055-00082Z	CPT	A48KCS12XX 00B7KE	
			441-110A	BUTTON	POWER CBT-9742	
			381-090A	SOCKET ASSY	21PIN PERI-SOCKET	
			381-094C	SOCKET	PCS-624	
			110-A31P	PWB ASSY	CPT PC09X2 19"(ONE BOARD)	
			06300391	IC	TDA2320	
			150-276B	COIL	DEGAUSSING COIL(20" D-INSU1A.	
			300-819A	CABINET ASSY	CBT-9742	
			450-A01A	ADAPTER	ANTENNA	
		CS01	08110511	C,ELECTROLYTIC	4.7MF/50V Y	
		CS02	08700331	C,POLYESTER	0.01MF/100V K	
		CS03	08110313	C,ELECTROLYTIC	10MF/16V Y	
		CS04	181-081B	C,ELECTROLYTIC	220MF/35V	
		CS05	08700337	C,POLYESTER	0.1MF/100V K	
		CS06	08110313	C,ELECTROLYTIC	10MF/16V Y	
		CS07	02140323	C,ELECTROLYTIC	470MF/16V Y	

NSP

MODEL : CKT-9742 / CKT-9745 BUYER NAME

RUN-DATE : 90.03.14

S	AL	LOCA.NO	PART NO(GS)	DESCRIPTION	SPECIFICATION	REMARKS
			CS08	181-081B	C,ELECTROLYTIC	220MF/35V
			CS09	08110316	C,ELECTROLYTIC	33MF/16V M
			C1	02140321	C,ELECTROLYTIC	220MF/16V Y
			C101	08110505	C,ELECTROLYTIC	0.47MF/50V Y
			C102	08300112	C,CERAMIC(TC)	10PF/50V D
			C104	08200972	C,CERAMIC(HI-K)	0.01MF/50V Z
			C106	08200760	C,CERAMIC(HI-K)	1000PF/50V Y
			C107	08705336	C,POLYESTER	0.068MF/100V K
			C108	08110313	C,ELECTROLYTIC	10MF/16V Y
			C109	08110511	C,ELECTROLYTIC	4.7MF/50V Y
			C110	08300724	C,CERAMIC(TC)	33PF/50V J
			C111	08110511	C,ELECTROLYTIC	4.7MF/50V Y
			C112	08200972	C,CERAMIC(HI-K)	0.01MF/50V Z
			C113	08200972	C,CERAMIC(HI-K)	0.01MF/50V Z
			C114	08300736	C,CERAMIC(TC)	100PF/50V J
			C115	08110319	C,ELECTROLYTIC	100MF/16V Y
			C116	08200972	C,CERAMIC(HI-K)	0.01MF/50V Z
			C117	08300116	C,CERAMIC(TC)	15PF/50V J
			C119	08110507	C,ELECTROLYTIC	1MF/50V Y
			C120	08300728	C,CERAMIC(TC)	47PF/50V J
			C121	08110316	C,ELECTROLYTIC	33MF/16V M
			C123	08200760	C,CERAMIC(HI-K)	1000PF/50V Y
			C151	08200972	C,CERAMIC(HI-K)	0.01MF/50V Z
			C152	02200740	C,CERAMIC(HI-K)	150PF/50V K
			C153	08200972	C,CERAMIC(HI-K)	0.01MF/50V Z
			C154	08300718	C,CERAMIC(TC)	18PF/50V J
			C155	02300146	C,CERAMIC(TC)	270PF/50V J
			C156	02200758	C,CERAMIC(HI-K)	820PF/50V K
			C157	08110313	C,ELECTROLYTIC	10MF/16V Y
			C158	08110507	C,ELECTROLYTIC	1MF/50V Y
			C161	08200972	C,CERAMIC(HI-K)	0.01MF/50V Z
			C166	08200760	C,CERAMIC(HI-K)	1000PF/50V Y
			C167	08110319	C,ELECTROLYTIC	100MF/16V Y
			C168	08110505	C,ELECTROLYTIC	0.47MF/50V Y
			C169	08110511	C,ELECTROLYTIC	4.7MF/50V Y
			C170	08110313	C,ELECTROLYTIC	10MF/16V Y
			C171	08110313	C,ELECTROLYTIC	10MF/16V Y
			C172	0870243A	C,POLYESTER	0.033MF/100V
			C173	08110511	C,ELECTROLYTIC	4.7MF/50V Y
			C174	08200972	C,CERAMIC(HI-K)	0.01MF/50V Z
			C202	08110313	C,ELECTROLYTIC	10MF/16V Y
			C203	181-064N	C,ELECTROLYTIC	4.7MF/16V
			C204	08110511	C,ELECTROLYTIC	4.7MF/50V Y
			C205	08110511	C,ELECTROLYTIC	4.7MF/50V Y
			C206	08200972	C,CERAMIC(HI-K)	0.01MF/50V Z
			C207	08700337	C,POLYESTER	0.1MF/100V K
			C208	08110313	C,ELECTROLYTIC	10MF/16V Y
			C209	08200972	C,CERAMIC(HI-K)	0.01MF/50V Z
			C211	08200974	C,CERAMIC(HI-K)	0.047MF/50V Z
			C301	181-155A	C,METAL POLYPROPYLENE	0.22MF/100V J
			C302	181-155B	C,METAL POLYPROPYLENE	0.33MF/100V J

MODEL : CKT-9742/CKT-9745 BUYER NAME

RUN-DATE : 90.03.14

S	AL	LOCA.NO	PART NO(GS)	DESCRIPTION	SPECIFICATION	REMARKS
		C303	08300154	C,CERAMIC(TC)	560PF/50V J	
		C304	08200760	C,CERAMIC(HI-K)	1000PF/50V Y	
		C305	08300730	C,CERAMIC(TC)	56PF/50V J	
		C306	08110419	C,ELECTROLYTIC	100MF/25V Y	
		C307	08700337	C,POLYESTER	0.1MF/100V K	
		C308	08110507	C,ELECTROLYTIC	1MF/50V Y	
		C309	02140427	C,ELECTROLYTIC	0.0022MF/25V Y	
		C310	08700331	C,POLYESTER	0.01MF/100V K	
		C315	08700331	C,POLYESTER	0.01MF/100V K	
		C401	08300144	C,CERAMIC(TC)	220PF/50V J	
		C402	08110509	C,ELECTROLYTIC	2.2MF/50V Y	
		C403	08110315	C,ELECTROLYTIC	22MF/16V M	
		C404	08700337	C,POLYESTER	0.1MF/100V K	
		C405	08110511	C,ELECTROLYTIC	4.7MF/50V Y	
		C406	08110317	C,ELECTROLYTIC	47MF/16V Y	
		C407	08110316	C,ELECTROLYTIC	33MF/16V M	
		C408	181-074N	CAPACITOR PSR	2700PF/50V J	
		C409	08700337	C,POLYESTER	0.1MF/100V K	
		C410	08700337	C,POLYESTER	0.1MF/100V K	
		C411	08700337	C,POLYESTER	0.1MF/100V K	
		C412	08200748	C,CERAMIC(HI-K)	330PF/50V K	
		C413	08705336	C,POLYESTER	0.068MF/100V K	
		C414	02110421	C,ELECTROLYTIC	220MF/25V Y	
		C415	181-131C	C,METAL POLYPROPYLENE	0.0086MF/1.6KV	
		C416	181-128C	C,METAL POLYPROPYLENE	0.39MF/200V J	
		C417	08110707	C,ELECTROLYTIC	1MF/160V M	
		C418	08201046	C,CERAMIC(HI-K)	270PF/500V K	
		C419	181-081B	C,ELECTROLYTIC	220MF/35V	
		C420	08201046	C,CERAMIC(HI-K)	270PF/500V K	
		C421	02140422	C,ELECTROLYTIC	330MF/25V M	
		C422	181-081B	C,ELECTROLYTIC	220MF/35V	
		C423	02140719	C,ELECTROLYTIC	100MF/160V Y	
		C424	08201046	C,CERAMIC(HI-K)	270PF/500V K	
		C425	02140811	C,ELECTROLYTIC	4.7MF/250V Y	
		C426	181-059D	C,POLYPROPYLENE	0.047MF/200V K	
		C427	08201046	C,CERAMIC(HI-K)	270PF/500V K	
		C428	08110518	C,ELECTROLYTIC	47MF/50V Y	
		C429	02140321	C,ELECTROLYTIC	220MF/16V Y	
		C431	08110313	C,ELECTROLYTIC	10MF/16V Y	
		C432	08110511	C,ELECTROLYTIC	4.7MF/50V Y	
		C433	08300146	C,CERAMIC(TC)	270PF/50V J	
		C437	08200748	C,CERAMIC(HI-K)	330PF/50V K	
		C438	02140321	C,ELECTROLYTIC	220MF/16V Y	
		C501	08110317	C,ELECTROLYTIC	47MF/16V Y	
		C502	08200972	C,CERAMIC(HI-K)	0.01MF/50V Z	
		C503	08110505	C,ELECTROLYTIC	0.47MF/50V Y	
		C504	08300740	C,CERAMIC(TC)	150PF/50V J	
		C505	08300730	C,CERAMIC(TC)	56PF/50V J	
		C506	08700337	C,POLYESTER	0.1MF/100V K	
		C507	08110509	C,ELECTROLYTIC	2.2MF/50V Y	
		C508	08110315	C,ELECTROLYTIC	22MF/16V M	

[REPLACEMENT PARTS LIST]						PAGE : 4
MODEL : CKT-9742/CKT-9745 BUYER NAME						RUN-DATE : 90.03.14
S	AL	LOCA.NO	PART NO(GS)	DESCRIPTION	SPECIFICATION	REMARKS
		C509	08110313	C,ELECTROLYTIC	10MF/16V Y	
		C510	08700337	C,POLYESTER	0.1MF/100V K	
		C511	08110313	C,ELECTROLYTIC	10MF/16V Y	
		C512	08700337	C,POLYESTER	0.1MF/100V K	
		C513	08700337	C,POLYESTER	0.1MF/100V K	
		C514	08700337	C,POLYESTER	0.1MF/100V K	
		C515	08110507	C,ELECTROLYTIC	1MF/50V Y	
		C516	08110507	C,ELECTROLYTIC	1MF/50V Y	
		C517	08110507	C,ELECTROLYTIC	1MF/50V Y	
		C518	08700337	C,POLYESTER	0.1MF/100V K	
		C519	08110509	C,ELECTROLYTIC	2.2MF/50V Y	
		C520	08700337	C,POLYESTER	0.1MF/100V K	
		C521	08200972	C,CERAMIC(HI-K)	0.01MF/50V Z	
		C522	08700331	C,POLYESTER	0.01MF/100V K	
		C523	08300736	C,CERAMIC(TC)	100PF/50V J	
		C524	08200760	C,CERAMIC(HI-K)	1000PF/50V Y	
		C601	08700337	C,POLYESTER	0.1MF/100V K	
		C602	08700337	C,POLYESTER	0.1MF/100V K	
		C603	08300728	C,CERAMIC(TC)	47PF/50V J	
		C604	08300732	C,CERAMIC(TC)	68PF/50V J	
		C605	08700337	C,POLYESTER	0.1MF/100V K	
		C606	08110501	C,ELECTROLYTIC	0.1MF/50V M	
		C607	08110313	C,ELECTROLYTIC	10MF/16V Y	
		C608	08700331	C,POLYESTER	0.01MF/100V K	
		C609	08200760	C,CERAMIC(HI-K)	1000PF/50V Y	
		C610	08110511	C,ELECTROLYTIC	4.7MF/50V Y	
		C611	08110315	C,ELECTROLYTIC	22MF/16V M	
		C612	08110507	C,ELECTROLYTIC	1MF/50V Y	
		C613	08200760	C,CERAMIC(HI-K)	1000PF/50V Y	
		C614	08300734	C,CERAMIC(TC)	82PF/50V J	
		C615	08700337	C,POLYESTER	0.1MF/100V K	
		C616	08700337	C,POLYESTER	0.1MF/100V K	
		C617	08200760	C,CERAMIC(HI-K)	1000PF/50V Y	
		C618	08200760	C,CERAMIC(HI-K)	1000PF/50V Y	
		C620	08200760	C,CERAMIC(HI-K)	1000PF/50V Y	
		C701	08110501	C,ELECTROLYTIC	0.1MF/50V M	
		C704	08110313	C,ELECTROLYTIC	10MF/16V Y	
		C706	08200760	C,CERAMIC(HI-K)	1000PF/50V Y	
		C707	08200760	C,CERAMIC(HI-K)	1000PF/50V Y	
		C708	08200760	C,CERAMIC(HI-K)	1000PF/50V Y	
		C709	08200760	C,CERAMIC(HI-K)	1000PF/50V Y	
		C710	08200760	C,CERAMIC(HI-K)	1000PF/50V Y	
		C711	08200760	C,CERAMIC(HI-K)	1000PF/50V Y	
		C712	08200760	C,CERAMIC(HI-K)	1000PF/50V Y	
		C713	08200760	C,CERAMIC(HI-K)	1000PF/50V Y	
		C714	08110317	C,ELECTROLYTIC	47MF/16V Y	
		C715	08200760	C,CERAMIC(HI-K)	1000PF/50V Y	
		C716	08200760	C,CERAMIC(HI-K)	1000PF/50V Y	
		C717	08200760	C,CERAMIC(HI-K)	1000PF/50V Y	
		C718	08200760	C,CERAMIC(HI-K)	1000PF/50V Y	
		C719	08110507	C,ELECTROLYTIC	1MF/50V Y	
		C720	08700337	C,POLYESTER	0.1MF/100V K	

[REPLACEMENT PARTS LIST]						PAGE : 5
MODEL : CKT-9742/CKT-9745 BUYER NAME						RUN-DATE : 90.03.14
S	AL	LOCA.NO	PART NO(GS)	DESCRIPTION	SPECIFICATION	REMARKS
		C721	08110507	C,ELECTROLYTIC	1MF/50V Y	
		C722	08110507	C,ELECTROLYTIC	1MF/50V Y	
		C723	08110315	C,ELECTROLYTIC	22MF/16V M	
		C725	08110319	C,ELECTROLYTIC	100MF/16V Y	
		C726	08200972	C,CERAMIC(HI-K)	0.01MF/50V Z	
		C727	08110317	C,ELECTROLYTIC	47MF/16V Y	
		C730	08200972	C,CERAMIC(HI-K)	0.01MF/50V Z	
		C738	08110316	C,ELECTROLYTIC	33MF/16V M	
		C739	02300147	C,CERAMIC(TC)	300PF/50V J	
		C740	08110313	C,ELECTROLYTIC	10MF/16V Y	
		C801	08110507	C,ELECTROLYTIC	1MF/50V Y	
		C802	08200760	C,CERAMIC(HI-K)	1000PF/50V Y	
		C803	181-057Q	C,ELECTROLYTIC	0.0082MF/100V J	
		C804	181-415H	CAPACITOR	BOX MPF 630V 0.033MF	
		C805	08110317	C,ELECTROLYTIC	47MF/16V Y	
		C806	08700337	C,POLYESTER	0.1MF/100V K	
	△	C807	181-157B	CAPACITOR	DE1410 E222M	
	△	C808	02140719	C,ELECTROLYTIC	100MF/160V Y	
		C809	08201046	C,CERAMIC(HI-K)	270PF/500V K	
		C810	08201046	C,CERAMIC(HI-K)	270PF/500V K	
		C811	181-081C	C,ELECTROLYTIC	1000MF/35V	
	△	C812	08201046	C,CERAMIC(HI-K)	270PF/500V K	
		C813	02140323	C,ELECTROLYTIC	470MF/16V Y	
		C814	181-410A	CAPACITOR	ECK-DNS472MEX	
	△	C815	08110319	C,ELECTROLYTIC	100MF/16V Y	
	△	C821	02201558	C,CERAMIC(HI-K)	820PF/2KV K	
	△	C851	181-408C	CAPACITOR	0.47MF/250V(ISKRA)	
	△	C852	181-408B	CAPACITOR	0.15UF(ISKRA1531)	
		C854	08201060	C,CERAMIC(HI-K)	0.001MF/500V K	
		C855	08201060	C,CERAMIC(HI-K)	0.001MF/500V K	
		C856	08201060	C,CERAMIC(HI-K)	0.001MF/500V K	
		C857	08201060	C,CERAMIC(HI-K)	0.001MF/500V K	
	△	C858	181-124B	C,ELECTROLYTIC	200MF/400V	
	△	C860	181-093A	CAPACITOR	CERA DE7090102K 125V	
		C870	02110421	C,ELECTROLYTIC	220MF/25V Y	
		C901	02300147	C,CERAMIC(TC)	300PF/50V J	
		C902	02300146	C,CERAMIC(TC)	270PF/50V J	
		C903	02300146	C,CERAMIC(TC)	270PF/50V J	
		C904	08110317	C,ELECTROLYTIC	47MF/16V Y	
		C905	02201561	C,CERAMIC(HI-K)	1200PF/2KV K	
		DS01	06200235	DIODE	1K34A TP-A	
		DL501	150-377G	DELAY LINE COIL	(350N)	
		DL502	175-013A	DELAY LINE	1H SD-11 P1D	
		DL601	175-013A	DELAY LINE	1H SD-11 P1D	
		DL602	150-377F	COIL	Y-DELAY LINE(380N)	
		D101	06200226	DIODE	1N4148 (DS4148) TA.	
		D102	06200226	DIODE	1N4148 (DS4148) TA.	
		D103	06200226	DIODE	1N4148 (DS4148) TA.	
		D104	06200226	DIODE	1N4148 (DS4148) TA.	
		D151	06200226	DIODE	1N4148 (DS4148) TA.	
		D201	06200226	DIODE	1N4148 (DS4148) TA.	



[REPLACEMENT PARTS LIST]						PAGE : 6
MODEL : CKT-9742/CKT-9745 BUYER NAME						RUN-DATE : 90.03.14
S	AL	LOCA.NO	PART NO(GS)	DESCRIPTION	SPECIFICATION	REMARKS
		D202	06200226	DIODE	1N4148 (DS4148) TA.	
		D203	06200226	DIODE	1N4148 (DS4148) TA.	
		D204	06200226	DIODE	1N4148 (DS4148) TA.	
		D301	06220070	DIODE	1N4003TA	
		D401	06220070	DIODE	1N4003TA	
		D402	06200226	DIODE	1N4148 (DS4148) TA.	
		D403	06200363	DIODE	TVR-06J	
		D404	06200363	DIODE	TVR-06J	
		D405	06200363	DIODE	TVR-06J	
		D406	06200226	DIODE	1N4148 (DS4148) TA.	
		D407	06200363	DIODE	TVR-06J	
		D601	06200226	DIODE	1N4148 (DS4148) TA.	
		D700	06200226	DIODE	1N4148 (DS4148) TA.	
		D702	06200235	DIODE	1K34A TP-A	
		D703	06200226	DIODE	1N4148 (DS4148) TA.	
		D704	06200226	DIODE	1N4148 (DS4148) TA.	
		D705	06200226	DIODE	1N4148 (DS4148) TA.	
		D706	06200226	DIODE	1N4148 (DS4148) TA.	
		D707	06200226	DIODE	1N4148 (DS4148) TA.	
		D708	06200226	DIODE	1N4148 (DS4148) TA.	
		D801	06200226	DIODE	1N4148 (DS4148) TA.	
		D802	06200226	DIODE	1N4148 (DS4148) TA.	
		D803	06200455	DIODE	R10J,D10DE(1A/600V)	
		D804	06220202	DIODE	RGP15J	
		D805	06200363	DIODE	TVR-06J	
		D806	06200363	DIODE	TVR-06J	
		D807	06220070	DIODE	1N4003TA	
		D851	06200124	DIODE	1N4005GP	
		D852	06200124	DIODE	1N4005GP	
		D853	06200124	DIODE	1N4005GP	
		D854	06200124	DIODE	1N4005GP	
		D901	06200226	DIODE	1N4148 (DS4148) TA.	
		D902	06200226	DIODE	1N4148 (DS4148) TA.	
		D903	06200226	DIODE	1N4148 (DS4148) TA.	
		F851	131-085A	FUSE	BSI APPROVED(KITE MARK)	
		IC1	06300732	IC	SAA1250 (ITT,TRANSMITTER)	
		IC101	06300357	IC	LA7520	
		IC201	06300170	IC	TEA1014	
		IC301	06300360	IC	LA7830	
		IC401	06300381	IC	TDA2579(VALVO)	
		IC402	06300218	IC	GL7812	
		IC501	06300493	IC	TDA3561A	
		IC601	06300492	IC	TDA3592A(SECAM TRANSCODER)	
		IC602	06300387	IC	TDA2006(GSS)	
		IC701	06300728	IC	SAA1293 (ITT VS U-COMPUTER)	
		IC702	06300729	IC	MDA2062 (ITT VS EEPROM)	
		IC801	06300777	IC	SMPS TDA 4605(SIEMENS)	
		J102	01165119	R,CARBON FILM	8.2K-J 1/16W	
		LS01	04040081	PEAKING COIL	470MH-K	
		L102	150-327M	VIF COIL	(PC04X)	
		L103	150-327Q	AFT COIL	(PC04X)	

[REPLACEMENT PARTS LIST]						PAGE : 7
MODEL : CKT-9742/CKT-9745 BUYER NAME						RUN-DATE : 90.03.14
S	AL	LOCA.NO	PART NO(GS)	DESCRIPTION	SPECIFICATION	REMARKS
		L104	04040039	PEAKING COIL	8.2MH-K	
		L105	04040037	PEAKING COIL	6.8MH-K	
		L151	150-521A	COIL	VARIABLE OSC (TRF-3030)	
		L152	150-109Q	PEAKING COIL	5.6MH-K	
		L153	04040045	PEAKING COIL	15MH-K	
		L163	150-167J	COIL	CHOKE 0.85UH	
		L401	04040109	PEAKING COIL	6800MH-K	
		L402	150-224C	COIL	LINEARITY	
		L403	125-022B	CORE,FERRITE	SM-2CRHW3.5X12X1B	
		L502	150-163G	MATRIX COIL	ADJ(PC07X)	
		L503	04040043	PEAKING COIL	12MH-K	
		L504	04040053	PEAKING COIL	330HM-K	
		L601	150-489B	COIL	SECAM BELL FILTER	
		L602	04040039	PEAKING COIL	8.2MH-K	
		L603	150-489C	COIL	DELAY MATRIX ADJ.	
		L604	04040031	PEAKING COIL	3.9MH-K	
		L605	150-489D	COIL	SECAM DEM.	
		L606	01165058	R,CARBON FILM	24-J 1/16W	
		L800	150-679D	COIL	CHOKE 100UH(NAMYANG)	
		Z152	166-002F	FILTER	CERAMIC SFE 6.5MB	
		L801	150-235E	HOR.CHOKE COIL	1MH(1A)	
		L809	04040089	PEAKING COIL	1000MH-K	
		L851	150-670B	COIL	LINE FILTER(70MH)	
		PS01	366-921B	PIN	WAFER IL-G 3(2.5S)	
		P402	366-921B	PIN	WAFER IL-G 3(2.5S)	
		P901	366-009B	PIN	PLUG	
		Q101	06120239	TRANSISTOR,	KTC1815-0(TA)	
		Q102	06120239	TRANSISTOR,	KTC1815-0(TA)	
		Q151	06120168	TRANSISTOR,	KTC1815-0	
		Q152	06120168	TRANSISTOR,	KTC1815-0	
		Q161	06120235	TRANSISTOR,	KTC388A(TA)	
		Q201	06120239	TRANSISTOR,	KTC1815-0(TA)	
		Q401	06120225	TRANSISTOR	KTC2230A(Y)	
		Q402	06130134	TRANSISTOR,	2SD 1555	
		Q701	06120239	TRANSISTOR,	KTC1815-0(TA)	
		Q702	06120239	TRANSISTOR,	KTC1815-0(TA)	
		Q703	06179461	TRANSISTOR	KTC 1959-Y (TA)	
		Q704	06120252	TRANSISTOR	KTA1015-0(TA)	
		Q705	06120249	TRANSISTOR	KTC1815-GR(TA)	
		Q706	06120252	TRANSISTOR	KTA1015-0(TA)	
		Q707	06120239	TRANSISTOR,	KTC1815-0(TA)	
		Q708	06120252	TRANSISTOR	KTA1015-0(TA)	
		Q709	06120252	TRANSISTOR	KTA1015-0(TA)	
		Q710	06120252	TRANSISTOR	KTA1015-0(TA)	
		Q711	06120252	TRANSISTOR	KTA1015-0(TA)	
		Q712	06120252	TRANSISTOR	KTA1015-0(TA)	
		Q713	06120173	TRANSISTOR	KTC2120-0	
		Q714	06120213	TRANSISTOR	KTC2236A-0	
		Q801	06120334	TRANSISTOR	SIP MOS BUZ-90(SIEMENS)	
		Q851	06120236	TRANSISTOR	KTC2482(TA)	
		Q901	06120218	TRANSISTOR,	KTC2482	

REPLACEMENT PARTS LIST						PAGE : 8
MODEL : CKT-9742/ CKT-9745 BUYER NAME						RUN-DATE : 90.03.14
S	AL	LOCA.NO	PART NO(GS)	DESCRIPTION	SPECIFICATION	REMARKS
		Q902	06120218	TRANSISTOR,	KTC2482	
		Q903	06120218	TRANSISTOR,	KTC2482	
		RJ96	01165073	R,CARBON FILM	100-J 1/16W	
		RL801	141-018A	RELAY	DG12D1-0(M)	
		RS01	01165117	R,CARBON FILM	6.8K-J 1/16W	
		RS02	01157145	R,CARBON FILM	100K-J 1/8W	
		RS03	01157145	R,CARBON FILM	100K-J 1/8W	
		RS04	01157145	R,CARBON FILM	100K-J 1/8W	
		RS05	180-140M	R,FUSING	10-J 1W	
		RS06	01157133	R,CARBON FILM	33K-J 1/8W	
		RS07	01154025	R,CARBON FILM	1-J 1/2W	
		RS08	01157119	R,CARBON FILM	8.2K-J 1/8W	
		RS310	01154025	R,CARBON FILM	1-J 1/2W	
		R101	01165105	R,CARBON FILM	2.2K-J 1/16W	
		R102	01165097	R,CARBON FILM	1K-J 1/16W	
		R103	01165135	R,CARBON FILM	39K-J 1/16W	
		R104	01165125	R,CARBON FILM	15K-J 1/16W	
		R105	01165113	R,CARBON FILM	4.7K-J 1/16W	
		R106	01165121	R,CARBON FILM	10K-J 1/16W	
		R107	01165143	R,CARBON FILM	82K-J 1/16W	
		R108	01165121	R,CARBON FILM	10K-J 1/16W	
		R109	01165087	R,CARBON FILM	390-J 1/16W	
		R110	01165089	R,CARBON FILM	470-J 1/16W	
		R111	01165137	R,CARBON FILM	47K-J 1/16W	
		R112	01165075	R,CARBON FILM	120-J 1/16W	
		R114	01165121	R,CARBON FILM	10K-J 1/16W	
		R115	01165097	R,CARBON FILM	1K-J 1/16W	
		R116	01165073	R,CARBON FILM	100-J 1/16W	
		R117	01165067	R,CARBON FILM	56-J 1/16W	
		R118	01165105	R,CARBON FILM	2.2K-J 1/16W	
		R119	01165097	R,CARBON FILM	1K-J 1/16W	
		R120	01165103	R,CARBON FILM	1.8K-J 1/16W	
		R121	01165075	R,CARBON FILM	120-J 1/16W	
		R123	01165105	R,CARBON FILM	2.2K-J 1/16W	
		R125	01165097	R,CARBON FILM	1K-J 1/16W	
		R126	01165129	R,CARBON FILM	22K-J 1/16W	
		R127	01165131	R,CARBON FILM	27K-J 1/16W	
		R128	01165097	R,CARBON FILM	1K-J 1/16W	
		R130	01165097	R,CARBON FILM	1K-J 1/16W	
		R153	01165097	R,CARBON FILM	1K-J 1/16W	
		R154	01165115	R,CARBON FILM	5.6K-J 1/16W	
		R155	01165121	R,CARBON FILM	10K-J 1/16W	
		R156	01165128	R,CARBON FILM	20K-J 1/16W	
		R157	01165125	R,CARBON FILM	15K-J 1/16W	
		R158	01165115	R,CARBON FILM	5.6K-J 1/16W	
		R159	01165117	R,CARBON FILM	6.8K-J 1/16W	
		R160	01165104	R,CARBON FILM	2K-J 1/16W	
		R161	01165081	R,CARBON FILM	220-J 1/16W	
		R165	01165113	R,CARBON FILM	4.7K-J 1/16W	
		R166	01165097	R,CARBON FILM	1K-J 1/16W	
		R167	01165055	R,CARBON FILM	18-J 1/16W	

REPLACEMENT PARTS LIST						PAGE : 9
MODEL : CKT-9742/ CKT-9745 BUYER NAME						RUN-DATE : 90.03.14
S	AL	LOCA.NO	PART NO(GS)	DESCRIPTION	SPECIFICATION	REMARKS
		R169	01165061	R,CARBON FILM	33-J 1/16W	
		R201	01165057	R,CARBON FILM	22-J 1/16W	
		R202	01165070	R,CARBON FILM	75-J 1/16W	
		R203	01165129	R,CARBON FILM	22K-J 1/16W	
		R204	01165126	R,CARBON FILM	16K-J 1/16W	
		R205	01165121	R,CARBON FILM	10K-J 1/16W	
		R206	01165121	R,CARBON FILM	10K-J 1/16W	
		R207	01165115	R,CARBON FILM	5.6K-J 1/16W	
		R208	01165113	R,CARBON FILM	4.7K-J 1/16W	
		R209	01165097	R,CARBON FILM	1K-J 1/16W	
		R210	01165093	R,CARBON FILM	680-J 1/16W	
		R211	01165070	R,CARBON FILM	75-J 1/16W	
		R212	01165087	R,CARBON FILM	390-J 1/16W	
		R213	01165070	R,CARBON FILM	75-J 1/16W	
		R214	01165070	R,CARBON FILM	75-J 1/16W	
		R215	01165070	R,CARBON FILM	75-J 1/16W	
		R216	01165103	R,CARBON FILM	1.8K-J 1/16W	
		R220	01165093	R,CARBON FILM	680-J 1/16W	
		R301	01165105	R,CARBON FILM	2.2K-J 1/16W	
		R302	01165157	R,CARBON FILM	330K-J 1/16W	
		R303	01165125	R,CARBON FILM	15K-J 1/16W	
		R304	01165153	R,CARBON FILM	220K-J 1/16W	
		R305	01165117	R,CARBON FILM	6.8K-J 1/16W	
		R306	01154085	R,CARBON FILM	330-J 1/2W	
		R307	01157099	R,CARBON FILM	1.2K-J 1/8W	
		R308	01165151	R,CARBON FILM	180K-J 1/16W	
		R309	01165125	R,CARBON FILM	15K-J 1/16W	
		R311	01165121	R,CARBON FILM	10K-J 1/16W	
		R312	01157101	R,CARBON FILM	1.5K-J 1/8W	
		R401	01165115	R,CARBON FILM	5.6K-J 1/16W	
		R402	01165090	R,CARBON FILM	510-J 1/16W	
		R403	01165095	R,CARBON FILM	820-J 1/16W	
		R404	01165161	R,CARBON FILM	470K-J 1/16W	
		R405	01165115	R,CARBON FILM	5.6K-J 1/16W	
		R406	01165121	R,CARBON FILM	10K-J 1/16W	
		R407	01165101	R,CARBON FILM	1.5K-J 1/16W	
		R408	01165145	R,CARBON FILM	100K-J 1/16W	
		R409	01165097	R,CARBON FILM	1K-J 1/16W	
		R411	01165133	R,CARBON FILM	33K-J 1/16W	
		R412	01165081	R,CARBON FILM	220-J 1/16W	
		R413	01165161	R,CARBON FILM	470K-J 1/16W	
		R414	01165147	R,CARBON FILM	120K-J 1/16W	
		R415	01165081	R,CARBON FILM	220-J 1/16W	
		R416	01154101	R,CARBON FILM	1.5K-J 1/2W	
		R417	180-140T	R,FUSING	56 OHM 1/2W	
		R418	180-140F	R,FUSING	220-J 1/2W	
		R419	01332099	R,METAL OXIDE FILM	1.2K-J 1W	
		R420	180-140Q	R,FUSING	1.8-J 2W	
		R421	01154128	R,CARBON FILM	20K-J 1/2W	
		R422	01157097	R,CARBON FILM	1K-J 1/8W	
		R423	01157142	R,CARBON FILM	75K-J 1/8W	

[REPLACEMENT PARTS LIST]						PAGE : 10
MODEL : CKT-9742/CKT-9745 BUYER NAME						RUN-DATE : 90.03.14
S	AL	LOCA.NO	PART NO(GS)	DESCRIPTION	SPECIFICATION	REMARKS
		R424	01157139	R,CARBON FILM	56K-J 1/8W	
		R425	01165121	R,CARBON FILM	10K-J 1/16W	
		R426	01165129	R,CARBON FILM	22K-J 1/16W	
		R427	180-3056	R,FUSING	1.5 OHM 1W	
		R428	01157073	R,CARBON FILM	100-J 1/8W	
		R429	01157097	R,CARBON FILM	1K-J 1/8W	
		R430	180-286F	R,FUSING	33-J 0.5W	
		R431	01165057	R,CARBON FILM	22-J 1/16W	
		R432	01154103	R,CARBON FILM	1.8K-J 1/2W	
		R433	180-140B	R,FUSING	1.0-J 0.5W	
		R434	180-140B	R,FUSING	1.0-J 0.5W	
		R435	01165137	R,CARBON FILM	47K-J 1/16W	
		R439	01165125	R,CARBON FILM	15K-J 1/16W	
		R440	01332029	R,METAL OXIDE FILM	1.5-J 1W	
		R441	01157095	R,CARBON FILM	820-J 1/8W	
		R456	180-286A	R,FUSING	2.2 OHM 0.5W	
		R500	01165110	R,CARBON FILM	3.6K-J 1/16W	
		R501	01165165	R,CARBON FILM	680K-J 1/16W	
		R502	01165061	R,CARBON FILM	33-J 1/16W	
		R503	01165073	R,CARBON FILM	100-J 1/16W	
		R504	01165104	R,CARBON FILM	2K-J 1/16W	
		R505	01165101	R,CARBON FILM	1.5K-J 1/16W	
		R506	01165099	R,CARBON FILM	1.2K-J 1/16W	
		R507	01165128	R,CARBON FILM	20K-J 1/16W	
		R508	01165119	R,CARBON FILM	8.2K-J 1/16W	
		R509	01165101	R,CARBON FILM	1.5K-J 1/16W	
		R510	01165097	R,CARBON FILM	1K-J 1/16W	
		R511	01165087	R,CARBON FILM	390-J 1/16W	
		R512	01165099	R,CARBON FILM	1.2K-J 1/16W	
		R513	01165089	R,CARBON FILM	470-J 1/16W	
		R514	01165108	R,CARBON FILM	3K-J 1/16W	
		R516	01165121	R,CARBON FILM	10K-J 1/16W	
		R517	01165139	R,CARBON FILM	56K-J 1/16W	
		R519	01165099	R,CARBON FILM	1.2K-J 1/16W	
		R520	01165099	R,CARBON FILM	1.2K-J 1/16W	
		R521	01165099	R,CARBON FILM	1.2K-J 1/16W	
		R522	01165103	R,CARBON FILM	1.8K-J 1/16W	
		R523	01165121	R,CARBON FILM	10K-J 1/16W	
		R601	01165107	R,CARBON FILM	2.7K-J 1/16W	
		R602	01165121	R,CARBON FILM	10K-J 1/16W	
		R603	01165087	R,CARBON FILM	390-J 1/16W	
		R604	01165097	R,CARBON FILM	1K-J 1/16W	
		R605	01165085	R,CARBON FILM	330-J 1/16W	
		R606	01165104	R,CARBON FILM	2K-J 1/16W	
		R607	01165104	R,CARBON FILM	2K-J 1/16W	
		R608	01165091	R,CARBON FILM	560-J 1/16W	
		R609	01165099	R,CARBON FILM	1.2K-J 1/16W	
		R610	01165080	R,CARBON FILM	200-J 1/16W	
		R701	01165097	R,CARBON FILM	1K-J 1/16W	
		R702	01165137	R,CARBON FILM	47K-J 1/16W	
		R703	01165121	R,CARBON FILM	10K-J 1/16W	

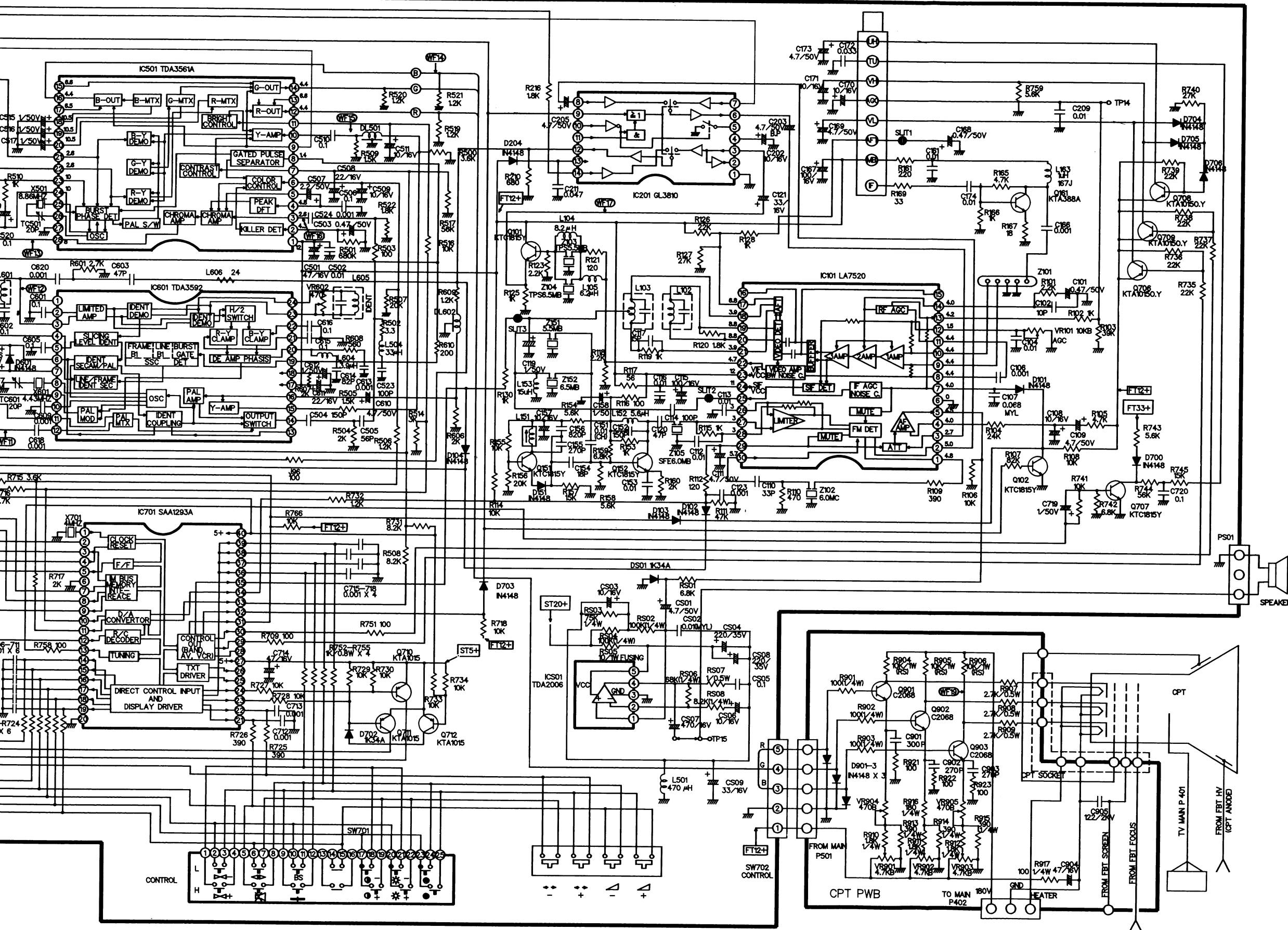
[REPLACEMENT PARTS LIST]						PAGE : 11
MODEL : CKT-9742/CKT-9745 BUYER NAME						RUN-DATE : 90.03.14
S	AL	LOCA.NO	PART NO(GS)	DESCRIPTION	SPECIFICATION	REMARKS
		R704	01165111	R,CARBON FILM	3.9K-J 1/16W	
		R705	01165111	R,CARBON FILM	3.9K-J 1/16W	
		R706	01165073	R,CARBON FILM	100-J 1/16W	
		R707	01165121	R,CARBON FILM	10K-J 1/16W	
		R708	01165125	R,CARBON FILM	15K-J 1/16W	
		R709	01165073	R,CARBON FILM	100-J 1/16W	
		R710	01165121	R,CARBON FILM	10K-J 1/16W	
		R711	01165121	R,CARBON FILM	10K-J 1/16W	
		R712	01165105	R,CARBON FILM	2.2K-J 1/16W	
		R713	01165109	R,CARBON FILM	3.3K-J 1/16W	
		R714	01154073	R,CARBON FILM	100-J 1/2W	
		R715	01165107	R,CARBON FILM	2.7K-J 1/16W	
		R716	01165107	R,CARBON FILM	2.7K-J 1/16W	
		R717	01165104	R,CARBON FILM	2K-J 1/16W	
		R718	01165121	R,CARBON FILM	10K-J 1/16W	
		R719	01165087	R,CARBON FILM	390-J 1/16W	
		R720	01165087	R,CARBON FILM	390-J 1/16W	
		R721	01165087	R,CARBON FILM	390-J 1/16W	
		R722	01165087	R,CARBON FILM	390-J 1/16W	
		R723	01165087	R,CARBON FILM	390-J 1/16W	
		R724	01165087	R,CARBON FILM	390-J 1/16W	
		R725	01165087	R,CARBON FILM	390-J 1/16W	
		R726	01165087	R,CARBON FILM	390-J 1/16W	
		R727	01165121	R,CARBON FILM	10K-J 1/16W	
		R728	01165121	R,CARBON FILM	10K-J 1/16W	
		R729	01165121	R,CARBON FILM	10K-J 1/16W	
		R730	01165121	R,CARBON FILM	10K-J 1/16W	
		R731	01165119	R,CARBON FILM	8.2K-J 1/16W	
		R732	01165099	R,CARBON FILM	1.2K-J 1/16W	
		R733	01165121	R,CARBON FILM	10K-J 1/16W	
		R734	01165121	R,CARBON FILM	10K-J 1/16W	
		R735	01165129	R,CARBON FILM	22K-J 1/16W	
		R736	01165129	R,CARBON FILM	22K-J 1/16W	
		R737	01165129	R,CARBON FILM	22K-J 1/16W	
		R738	01165129	R,CARBON FILM	22K-J 1/16W	
		R739	01165129	R,CARBON FILM	22K-J 1/16W	
		R740	01165131	R,CARBON FILM	27K-J 1/16W	
		R741	01165121	R,CARBON FILM	10K-J 1/16W	
		R742	01165117	R,CARBON FILM	6.8K-J 1/16W	
		R743	01165115	R,CARBON FILM	5.6K-J 1/16W	
		R744	01165139	R,CARBON FILM	56K-J 1/16W	
		R745	01165125	R,CARBON FILM	15K-J 1/16W	
		R746	01157103	R,CARBON FILM	1.8K-J 1/8W	
		R747	01332065	R,METAL OXIDE FILM	47-J 1W	
		R748	01157095	R,CARBON FILM	820-J 1/8W	
		R749	01332069	R,METAL OXIDE FILM	680-J 1W	
		R750	01157093	R,CARBON FILM	680-J 1/8W	
		R751	01165073	R,CARBON FILM	100-J 1/16W	
		R752	01165097	R,CARBON FILM	1K-J 1/16W	
		R753	01165097	R,CARBON FILM	1K-J 1/16W	
		R754	01165097	R,CARBON FILM	1K-J 1/16W	

[REPLACEMENT PARTS LIST]						PAGE : 12
MODEL : CKT-9742/CKT-9745 BUYER NAME				RUN-DATE : 90.03.14		
S	AL	LOCA.NO	PART NO(GS)	DESCRIPTION	SPECIFICATION	REMARKS
		R755	01165097	R,CARBON FILM	1K-J 1/16W	
		R758	01165073	R,CARBON FILM	100-J 1/16W	
		R759	01165115	R,CARBON FILM	5.6K-J 1/16W	
		R761	01165113	R,CARBON FILM	4.7K-J 1/16W	
		R766	01165121	R,CARBON FILM	10K-J 1/16W	
		R777	01165154	R,CARBON FILM	240K-J 1/16W	
		R800	01165057	R,CARBON FILM	22-J 1/16W	
		R801	01165081	R,CARBON FILM	220-J 1/16W	
		R802	01165114	R,CARBON FILM	5.1K-J 1/16W	
		R803	01157073	R,CARBON FILM	100-J 1/8W	
		R804	01154155	R,CARBON FILM	270K-J 1/2W	
		R805	01154167	R,CARBON FILM	820K-J 1/2W	
		R806	01157112	R,CARBON FILM	4.3K-J 1/8W	
		R807	01165113	R,CARBON FILM	4.7K-J 1/16W	
		R808	01341129	R,METAL OXIDE FILM	22K-J 3W	
		R809	01165121	R,CARBON FILM	10K-J 1/16W	
△		R810	180-042B	RESISTOR COMP GF	4.7 OHM 1/2W	
		R811	01341073	R,METAL OXIDE FILM	100-J 3W	
		R812	01165091	R,CARBON FILM	560-J 1/16W	
△		R813	180-140B	R,FUSING	1.0-J 0.5W	
		R814	180-140B	R,FUSING	1.0-J 0.5W	
		R851	01154152	R,CARBON FILM	200K-J 1/2W	
		R852	01341125	R,METAL OXIDE FILM	15K-J 3W	
		R853	01154125	R,CARBON FILM	15K-J 1/2W	
△		R854	180-142F	R,CEMENT RWR	2.2-J 5W	
		R901	01157073	R,CARBON FILM	100-J 1/8W	
		R902	01157073	R,CARBON FILM	100-J 1/8W	
		R903	01157073	R,CARBON FILM	100-J 1/8W	
		R904	01332121	R,METAL OXIDE FILM	10K-J 1W	
		R905	01332121	R,METAL OXIDE FILM	10K-J 1W	
		R906	01332121	R,METAL OXIDE FILM	10K-J 1W	
		R907	01154107	R,CARBON FILM	2.7K-J 1/2W	
		R908	01154107	R,CARBON FILM	2.7K-J 1/2W	
		R909	01154107	R,CARBON FILM	2.7K-J 1/2W	
		R910	01157103	R,CARBON FILM	1.8K-J 1/8W	
		R911	01157103	R,CARBON FILM	1.8K-J 1/8W	
		R912	01157103	R,CARBON FILM	1.8K-J 1/8W	
		R913	01157087	R,CARBON FILM	390-J 1/8W	
		R914	01157087	R,CARBON FILM	390-J 1/8W	
		R915	01157087	R,CARBON FILM	390-J 1/8W	
		R916	01157079	R,CARBON FILM	180-J 1/8W	
		R917	01157073	R,CARBON FILM	100-J 1/8W	
		R921	01157073	R,CARBON FILM	100-J 1/8W	
		R922	01157073	R,CARBON FILM	100-J 1/8W	
		R923	01157073	R,CARBON FILM	100-J 1/8W	
		SW301	140-111C	SWITCH,	JRS-1301	
		SW701	140-277A	SWITCH	12KEY (HOKURIKU)	
		SW702	140-219A	SWITCH	TACT S/W UNIT 4P	
△		SW851	140-278A	SWITCH	MAIN 70060-055(PREH)	
		TC501	181-169A	CAPACITOR	TRIMMER 4.5P-20P	
		TC601	181-169A	CAPACITOR	TRIMMER 4.5P-20P	

[REPLACEMENT PARTS LIST]						PAGE : 13
MODEL : CKT-9742/CKT-9745 BUYER NAME				RUN-DATE : 90.03.14		
S	AL	LOCA.NO	PART NO(GS)	DESCRIPTION	SPECIFICATION	REMARKS
		TH851	163-012A	THERMISTOR	PTH451A02BG180M290	
△		T401	151-116B	TRANSFORMER	H.DRIVE(PC04X)	
△		T402	154-177B	FBT	PAL 19INCH	
		T801	151-337A	TRANSFORMER	SMPS TRANS(TDA 4605)	
		VR101	180-428H	RESISTOR	SEMI VR EVN-D4A A01 B10K OHM	
		VR301	180-425M	RESISTOR SEMI VR	220K OHM	
		VR302	180-428H	RESISTOR	SEMI VR EVN-D4A A01 B10K OHM	
		VR401	180-425L	RESISTOR SEMI VR	100K OHM	
		VR402	180-428H	RESISTOR	SEMI VR EVN-D4A A01 B10K OHM	
		VR501	180-428D	RESISTOR	SEMI VR EVN-D4A A01 B1.0KOHM	
		VR601	180-428D	RESISTOR	SEMI VR EVN-D4A A01 B1.0KOHM	
		VR602	01165087	R,CARBON FILM	390-J 1/16W	
		VR801	180-428D	RESISTOR	SEMI VR EVN-D4A A01 B1.0KOHM	
		VR901	180-428G	RESISTOR	SEMI VR EVN-D4A A01 B5.0KOHM	
		VR902	180-428G	RESISTOR	SEMI VR EVN-D4A A01 B5.0KOHM	
		VR903	180-428G	RESISTOR	SEMI VR EVN-D4A A01 B5.0KOHM	
		VR904	180-428C	RESISTOR	SEMI VR EVN-D4A A01 B500 OHM	
		VR905	180-428C	RESISTOR	SEMI VR EVN-D4A A01 B500 OHM	
		X501	156-007A	OSCILLATOR	X-TAL 8.86 MHZ	
		X601	156-006A	OSCILLATOR	X-TAL 4.43MHZ (18U)	
		X701	156-005B	OSCILLATOR	CRYSTAL,4MHZ	
		ZD401	06220124	DIODE	ZENER,EQA02-17B	
		ZD701	06220234	DIODE	ZENER Z9.1BM TA	
		ZD702	06220300	DIODE	ZENER Z20BM TA	
		ZD703	167-006B	IC	KA33V	
		ZD704	06220228	DIODE	ZENER Z5.6BM TA	
		ZD705	06220228	DIODE	ZENER Z5.6BM TA	
		Z101	166-227A	FILTER	SAW FILTER K2950	
		Z102	166-126D	FILTER	CDA 6.0MC24B	
		Z103	166-031B	FILTER	TRAP,CERAMIC TPS 5.5MB	
		Z151	166-002D	FILTER	CERAMIC SFE 5.5MB	
		Z104	166-031E	FILTER	TRAP,CERAMIC 6.5 MB	
		Z105	166-002E	FILTER	CERAMIC SFE 6.0MB	
			372-H21L	BOX	INNER(9745)	
			371-688A	PACKING	BOTTOM(9745)	
				*** END OF DATA ***		

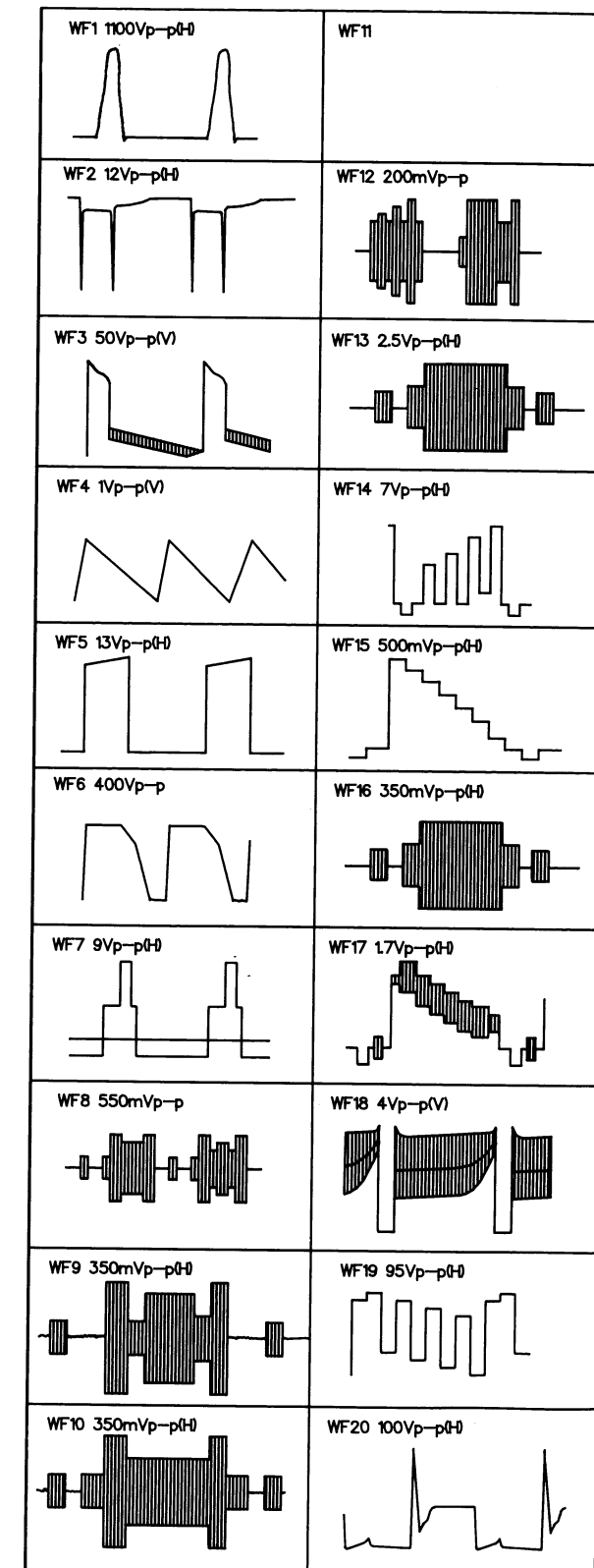
# CIRCUIT DIAGRAM PC91A

MODEL : CKT-9745  
CKT-9742



## NOTICE

Since this is basic circuit diagram, the value of components and some partial connection are subject to be changed for improvement.



P/N : 484-722D



# CIRCUIT DIAGRAM PC91A

## OBSERVATION OF VOLTAGES AND WAVEFORMS

1. Voltages read with VTVM from point shown to chassis ground, line voltage 180-270V volts, colour bar signal.
2. Voltages reading may vary  $\pm 20\%$ .
3. This schematic diagram is representative only.
4. All waveforms are taken using a wide band oscilloscope and a low capacity probe.
5. Check FINE TUNING, AGC, BRIGHTNESS, CONTRAST and COLOUR controls for best picture, make sure that CONTRAST and COLOUR controls are in mid position and BRIGHTNESS control is almost in maximum position.
6. Waveforms are taken using a standard colour bar signal.

## VALUE OF RESISTOR, CAPACITOR and INDUCTOR

1. Resistance is shown in ohm, k=1,000, M=1,000,000.
2. Unless otherwise noted in schematic, all capacitor values less than 1 are expressed in  $\mu\text{F}$ .

The components marked  $\Delta$  conform to VDE or IEC guidelines and are essential for safe operation of the set, while those marked  $\nabla$  are required for correct operation. Use specified parts only when replacing.

