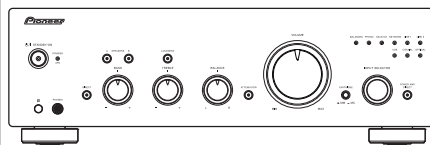


Pioneer

Service Manual



A-70DA-K

ORDER NO.
RRV4622

INTEGRATED AMPLIFIER

A-70DA-K

A-70DA-S

A-50DA-K

A-50DA-S

THIS MANUAL IS APPLICABLE TO THE FOLLOWING MODEL(S) AND TYPE(S).

Model	Type	Power Requirement	Remarks
A-70DA-K/-S	SYXEV8	AC 220 V to 230 V	
A-50DA-K/-S	SYXEV8	AC 220 V to 230 V	



PIONEER CORPORATION 1-1, Shin-ogura, Saiwai-ku, Kawasaki-shi, Kanagawa 212-0031, Japan

PIONEER ELECTRONICS (USA) INC. P.O. Box 1760, Long Beach, CA 90801-1760, U.S.A.

PIONEER EUROPE NV Haven 1087, Keetberglaan 1, 9120 Melsele, Belgium

PIONEER ELECTRONICS ASIACENTRE PTE. LTD. 253 Alexandra Road, #04-01, Singapore 159936

© Onkyo & Pioneer Corporation 2015

K-FZV OCT. 2015 Printed in Japan

SAFETY INFORMATION



This service manual is intended for qualified service technicians ; it is not meant for the casual do-it-yourselfer. Qualified technicians have the necessary test equipment and tools, and have been trained to properly and safely repair complex products such as those covered by this manual. Improperly performed repairs can adversely affect the safety and reliability of the product and may void the warranty. If you are not qualified to perform the repair of this product properly and safely, you should not risk trying to do so and refer the repair to a qualified service technician.

CONTENTS

SAFETY INFORMATION	2
1. SERVICE PRECAUTIONS	2
1.1 NOTES ON SOLDERING	2
2. SPECIFICATIONS	3
2.1 ACCESSORIES	3
2.2 SPECIFICATIONS	3
3. BASIC ITEMS FOR SERVICE	4
3.1 CHECK POINTS AFTER SERVICING	4
3.2 PCB LOCATIONS	5
3.3 JIGS LIST	6
4. BLOCK DIAGRAM	7
4.1 OVERALL CONNECTION DIAGRAM (A-70DA-K, A-70DA-S)	7
4.2 OVERALL CONNECTION DIAGRAM (A-50DA-K, A-50DA-S)	8
4.3 BLOCK DIAGRAM	9
5. DIAGNOSIS	10
5.1 TROUBLESHOOTING	10
5.2 PROTECTION CIRCUIT DESCRIPTION	16
6. SERVICE MODE	17
7. DISASSEMBLY	18
8. EACH SETTING AND ADJUSTMENT	43
8.1 HOW TO CHECK THE FIRMWARE VERSION	43
8.2 FIRMWARE UPDATING	43
9. EXPLODED VIEWS AND PARTS LIST	46
9.1 PACKING SECTION	46
9.2 EXTERIOR SECTION (A-70DA-K, A-70DA-S)	48
9.3 EXTERIOR SECTION (A-50DA-K, A-50DA-S)	50
9.4 FRONT SECTION	52

1. SERVICE PRECAUTIONS

1.1 NOTES ON SOLDERING

- For environmental protection, lead-free solder is used on the printed circuit boards mounted in this unit. Be sure to use lead-free solder and a soldering iron that can meet specifications for use with lead-free solders for repairs accompanied by reworking of soldering.
- Do NOT use a soldering iron whose tip temperature cannot be controlled.

2. SPECIFICATIONS

2.1 ACCESSORIES

- Remote control unit (CARTA70DA)
 - AC Power cord (CJA2B135ZV)
 - Operating instructions (VQX1A1939Z)
 - Short pin plug x 2 (CJT1A100)
- Caution Sheet (VQE1A816Z)
 - Warranty card (VQE1A818Z)
 - AAA/IEC R03 dry cell battery x 2
- A

2.2 SPECIFICATIONS

Amplifier section

Power output specification is for when power supply is 230 V.

•Continuous power output (both channels driven at 20 Hz to 20 kHz)

A-70DA/A-50DA	.90 W + 90 W (THD 0.5 %, 4 Ω)
A-70DA/A-50DA	.65 W + 65 W (THD 0.5 %, 8 Ω)

Audio section

•Input terminals (Sensitivity/Impedance)

BALANCED	.200 mV/82 k Ω
SACD/CD, NETWORK, LINE 1, LINE 2	.200 mV/50 k Ω
POWER AMP DIRECT	1 V/10 k Ω
PHONO (MM)	2.8 mV/50 k Ω
PHONO (MC)	0.24 mV/100 Ω(A-70DA only)
COAXIAL	.500 mVp-p/75 Ω

•Output (Level/Impedance)

LINE 2 OUT	.200 mV/2.2 k Ω
------------	-----------------

•Frequency response

SACD/CD, NETWORK, LINE 1, LINE 2	.5 Hz to 50 kHz ±3 dB*
----------------------------------	------------------------

•RIAA DEVIATION

PHONO (MM)	.20 Hz to 20 kHz ±0.5 dB*
PHONO (MC)	.20 Hz to 20 kHz ±0.5 dB*(A-70DA only)

* Measured with DIRECT button switched on.

•Tone control

Bass	± 10 dB (100 Hz)
Treble	± 10 dB (10 kHz)

•Signal-to-Noise Ratio (IHF SHORTED, A-NETWORK)

SACD/CD, NETWORK, LINE 1, LINE 2	101 dB*
PHONO (MM, 5 mV input)	89 dB*
PHONO (MC, 0.5 mV input)	.74 dB*(A-70DA only)

* Measured with DIRECT button switched on.

•Guaranteed impedance

A, B	4 Ω to 16Ω
A+B	8 Ω to 32Ω
Bi-wiring	4 Ω to 16Ω

Miscellaneous

Power requirements	AC 220 V to 230 V, 50 Hz
Power consumption	
A-70DA	74 W
A-50DA	72 W
In standby	.0.3 W
Dimensions	
A-70DA	.435 mm (W) x 141.5 mm (H) x 370 mm (D)
A-50DA	.435 mm (W) x 138.5 mm (H) x 368 mm (D)
Weight (without package)	
A-70DA	.17.2 kg
A-50DA	.11.1 kg



Note

- Specifications and the design are subject to possible modifications without notice, due to improvements.
 - Corporation and product names mentioned herein are trademarks or registered trademarks of the respective corporations.
 - “Pioneer” is a trademark of Pioneer Corporation, and is used under license.
- D

3. BASIC ITEMS FOR SERVICE

3.1 CHECK POINTS AFTER SERVICING

A To keep the product quality after servicing, confirm recommended check points shown below.

No.	Procedures	Check points
1	Check the symptom pointed out by a customer	The pointed content should not reoccur Sound and operation should not be defective
2	Check each input and main VOL (check the operation of selector)	The sound is output by selecting an analog-connected input with a selector and the sound volume should change by rotating main VOL knob
3	Check the TONE CONTROL, BALANCE, and function	The sound quality or right and left balances should change by rotating each VOL knob
4	Check LOUDNESS and DIRECT functions	The sound quality should change by setting LOUDNESS function to ON. LOUDNESS function should be disabled by setting DIRECT function to ON.
5	Check POWER AMP DIRECT terminal (connected from pre-out terminal of AV AMP to POWER AMP DIRECT terminal)	The sound volume should change by adjusting the sound volume of connected AV AMP. The sound volume should not be changed by the main VOL on the main unit.
6	Check SPEAKER A/B and headphone terminal	There should not be defect in sound such as noise
7	Check the external package	Check scratch or taint is not generated after accepting the repair

C See the table below for the items to be checked regarding audio.

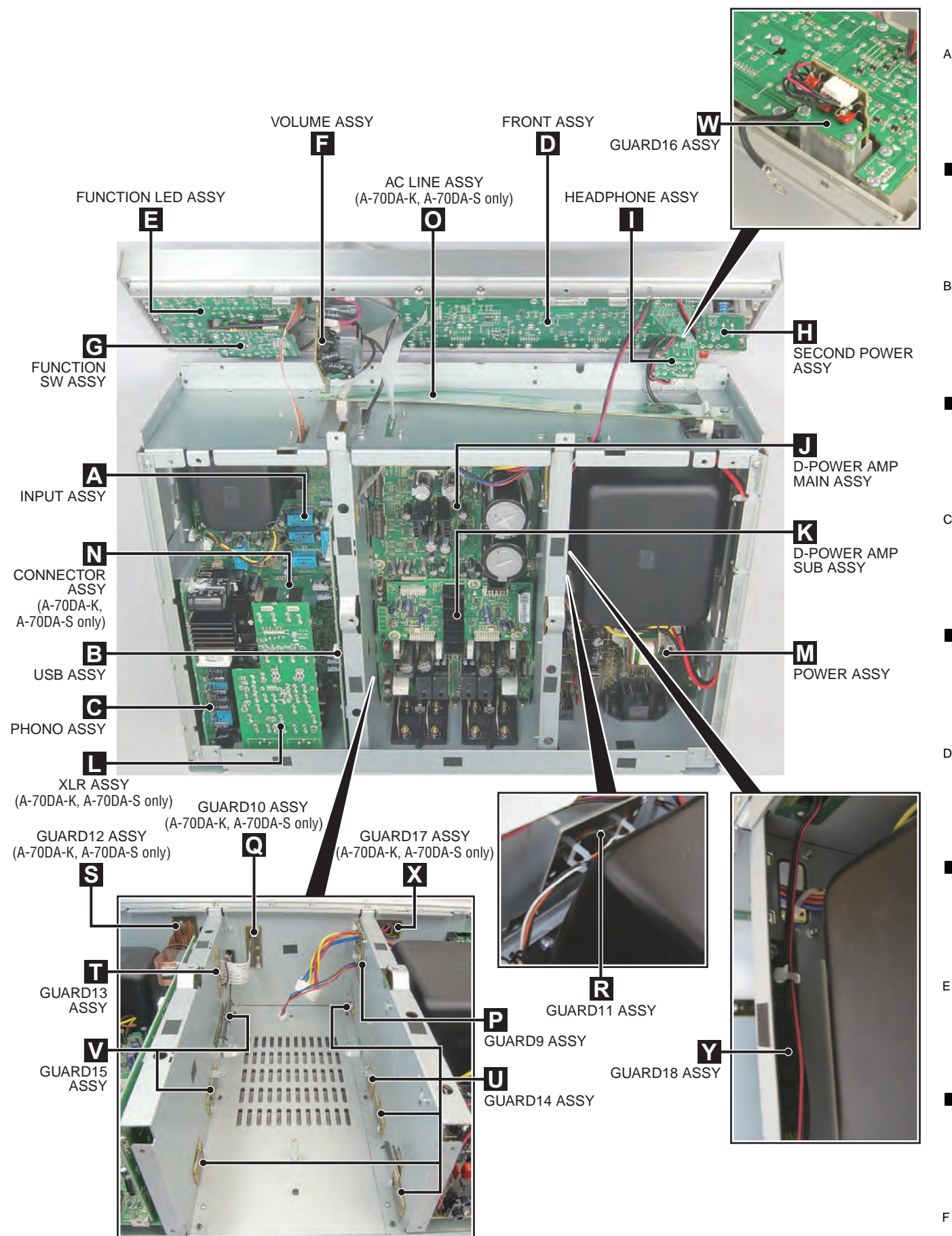
Item to be checked regarding audio
Distortion
Noise
Volume too low
Volume too high
Volume fluctuating
Sound interrupted

D

E

F

3.2 PCB LOCATIONS



NOTES: ● Parts marked by “NSP” are generally unavailable because they are not in our Master Spare Parts List.

● The Δ mark found on some component parts indicates the importance of the safety factor of the part.

Therefore, when replacing, be sure to use parts of identical designation.

Mark	No.	Description	Part No.	Mark	No.	Description	Part No.
LIST OF ASSEMBLIES							
	1...	FRONT ASSY (A-70DA-K/-S)	COP12818B	1...	INPUT ASSY (A-70DA-K/-S)	COP12819B	
	2..	FRONT ASSY	CUP12818Z-1BCD	2..	INPUT ASSY	VUP12819Z-1B	
	2..	FUNCTION LED ASSY	CUP12818Z-2BC	2..	CONNECTOR ASSY	VUP12819Z-2BCD	
	2..	VOLUME ASSY	CUP12818Z-3BCD				
	2..	FUNCTION SW ASSY	CUP12818Z-4BCD	1...	INPUT ASSY (A-50DA-K/-S)	COP12819E	
	2..	SECOND POWER ASSY	CUP12818Z-5	2..	INPUT ASSY	VUP12819Z-1E	
	2..	HEADPHONE ASSY	CUP12818Z-6				
	2..	POWER ASSY	CUP12818Z-7B	1...	MAIN ASSY (A-70DA-K/-S)	COP12820B	
B	2..	AC LINE ASSY	CUP12818Z-8BCD	2..	USB ASSY	CUP12820Z-1B	
	2..	GUARD9 ASSY	CUP12818Z-9	2..	PHONO ASSY	CUP12820Z-2B	
	2..	GUARD10 ASSY	CUP12818Z-10	2..	XLR ASSY	CUP12820Z-3B	
NSP	2..	GUARD11 ASSY	1...	MAIN ASSY (A-50DA-K/-S)	COP12820E	
	2..	GUARD12 ASSY	CUP12818Z-12	2..	USB ASSY	CUP12820Z-1E	
	2..	GUARD13 ASSY	CUP12818Z-13	2..	PHONO ASSY	CUP12820Z-2E	
NSP	2..	GUARD14 ASSY				
NSP	2..	GUARD15 ASSY	1...	D-AMP MAIN ASSY (A-70DA-K/-S)	COP12821B	
NSP	2..	GUARD16 ASSY	2..	D-POWER AMP MAIN ASSY	VUP12821ZB	
NSP	2..	GUARD17 ASSY				
NSP	2..	GUARD18 ASSY	1...	D-AMP MAIN ASSY (A-50DA-K/-S)	COP12821C	
				2..	D-POWER AMP MAIN ASSY	VUP12821ZC	
	1...	FRONT ASSY (A-50DA-K/-S)	COP12818E	1...	D-AMP SUB ASSY	COP12822C	
C	2..	FRONT ASSY	CUP12818Z-1EF	2..	D-POWER AMP SUB ASSY	VUP12822Z	
	2..	FUNCTION LED ASSY	CUP12818Z-2EF				
	2..	VOLUME ASSY	CUP12818Z-3EF				
	2..	FUNCTION SW ASSY	CUP12818Z-4EF				
	2..	SECOND POWER ASSY	CUP12818Z-5				
	2..	HEADPHONE ASSY	CUP12818Z-6				
	2..	POWER ASSY	CUP12818Z-7E				
	2..	GUARD9 ASSY	CUP12818Z-9				
NSP	2..	GUARD11 ASSY				
	2..	GUARD13 ASSY	CUP12818Z-13				
NSP	2..	GUARD14 ASSY				
NSP	2..	GUARD15 ASSY				
NSP	2..	GUARD16 ASSY				
D	NSP	2..	GUARD18 ASSY			

3.3 JIGS LIST

[1] Jigs List

Name	Jig No.	Remarks
CONNECTOR CONVERSION JIG	GGD1898	Farmware Update
UPDATE JIG	GGF1675	

[2] Lubricants List

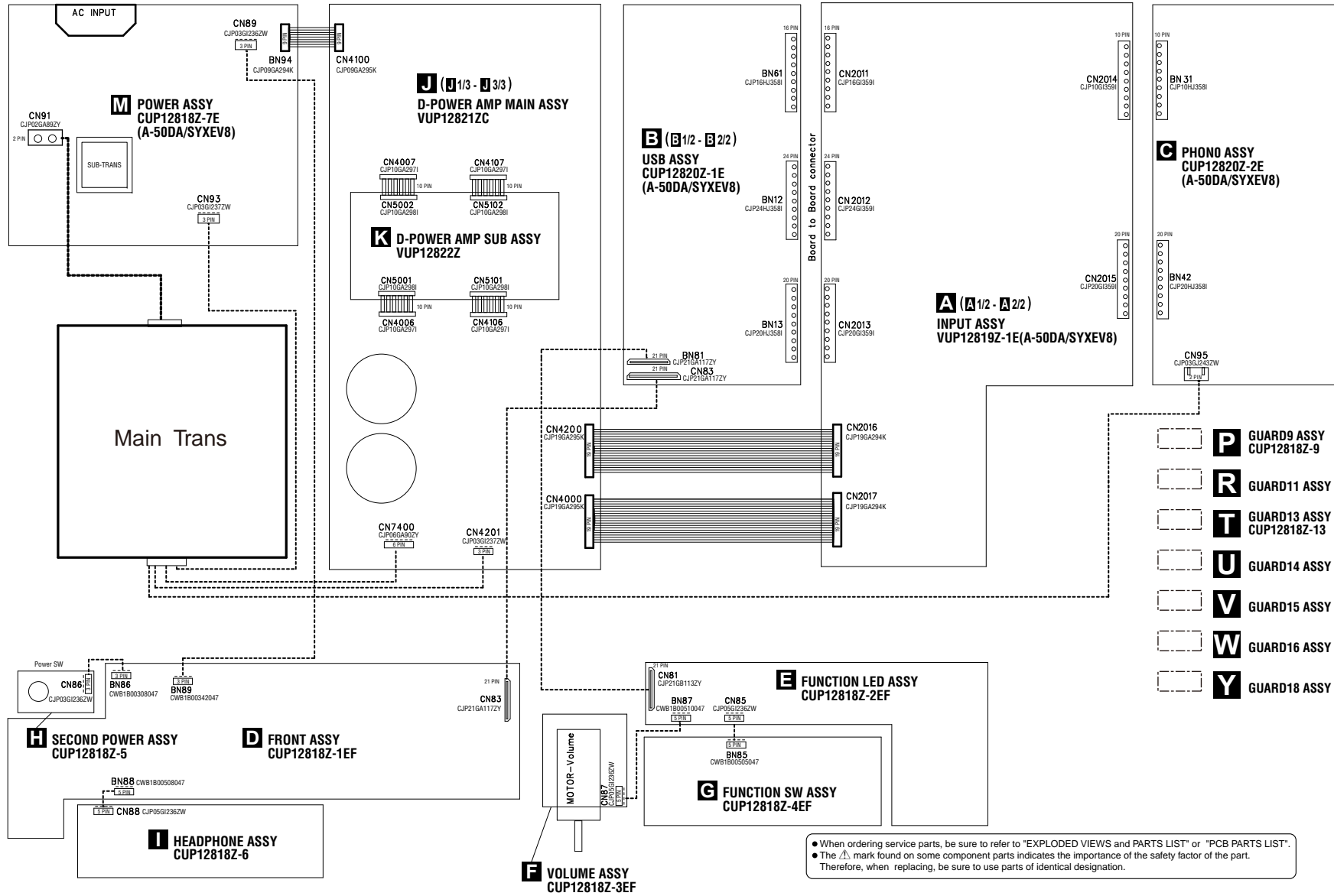
Name	Lubricants No.	Remarks
Silicon Bond	GYA1011	Refer to “9.4 FRONT SECTION”

5 ☐ 6 ☐ 7 ☐ 8

5 6 7 8



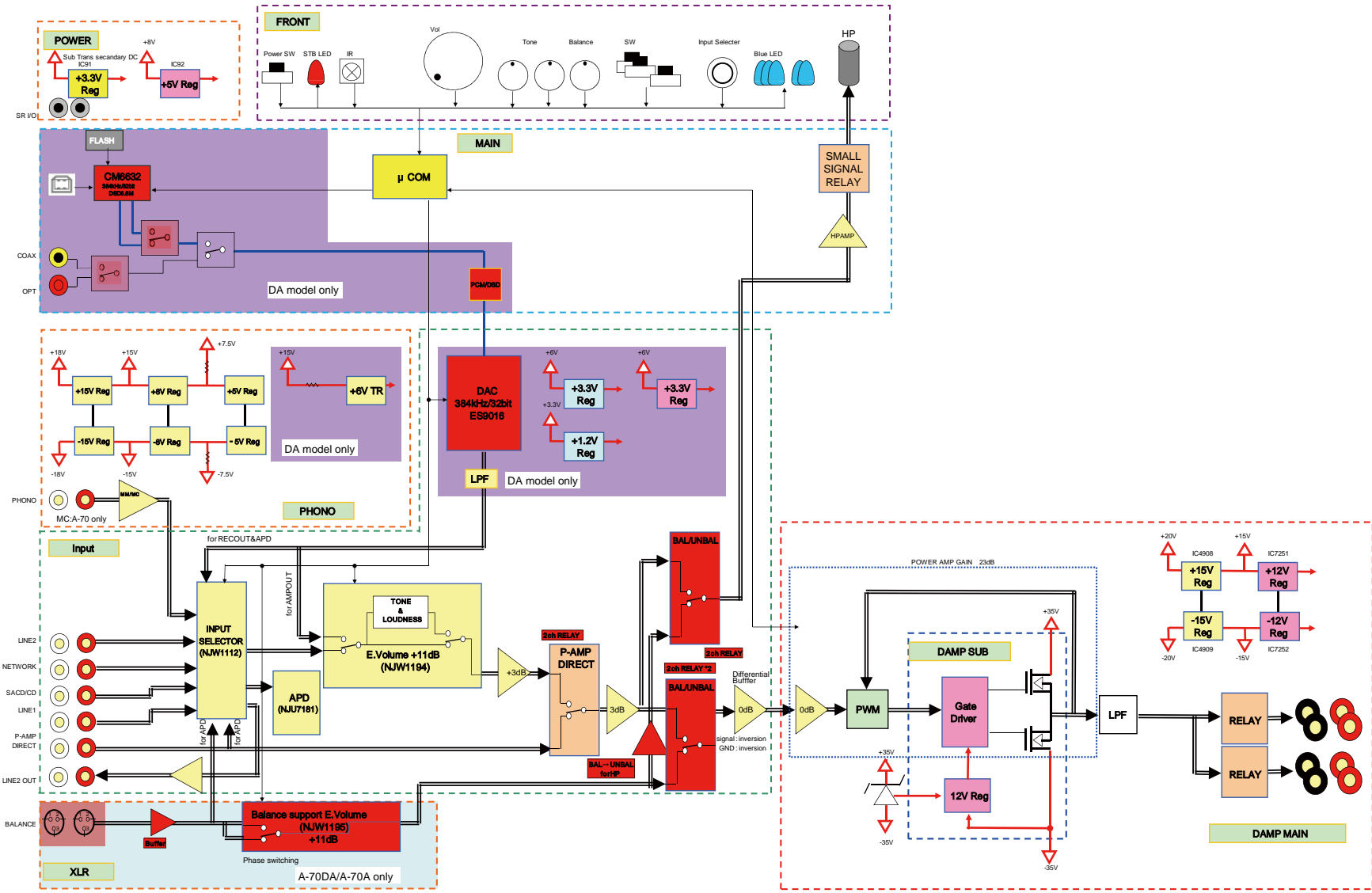
4.2 OVERALL CONNECTION DIAGRAM (A-50DA-K, A-50DA-S)



• When ordering service parts, be sure to refer to "EXPLODED VIEWS and PARTS LIST" or "PCB PARTS LIST".
 • The Δ mark found on some component parts indicates the importance of the safety factor of the part.
 Therefore, when replacing, be sure to use parts of identical designation.

A-70DA-K

4.3 BLOCK DIAGRAM

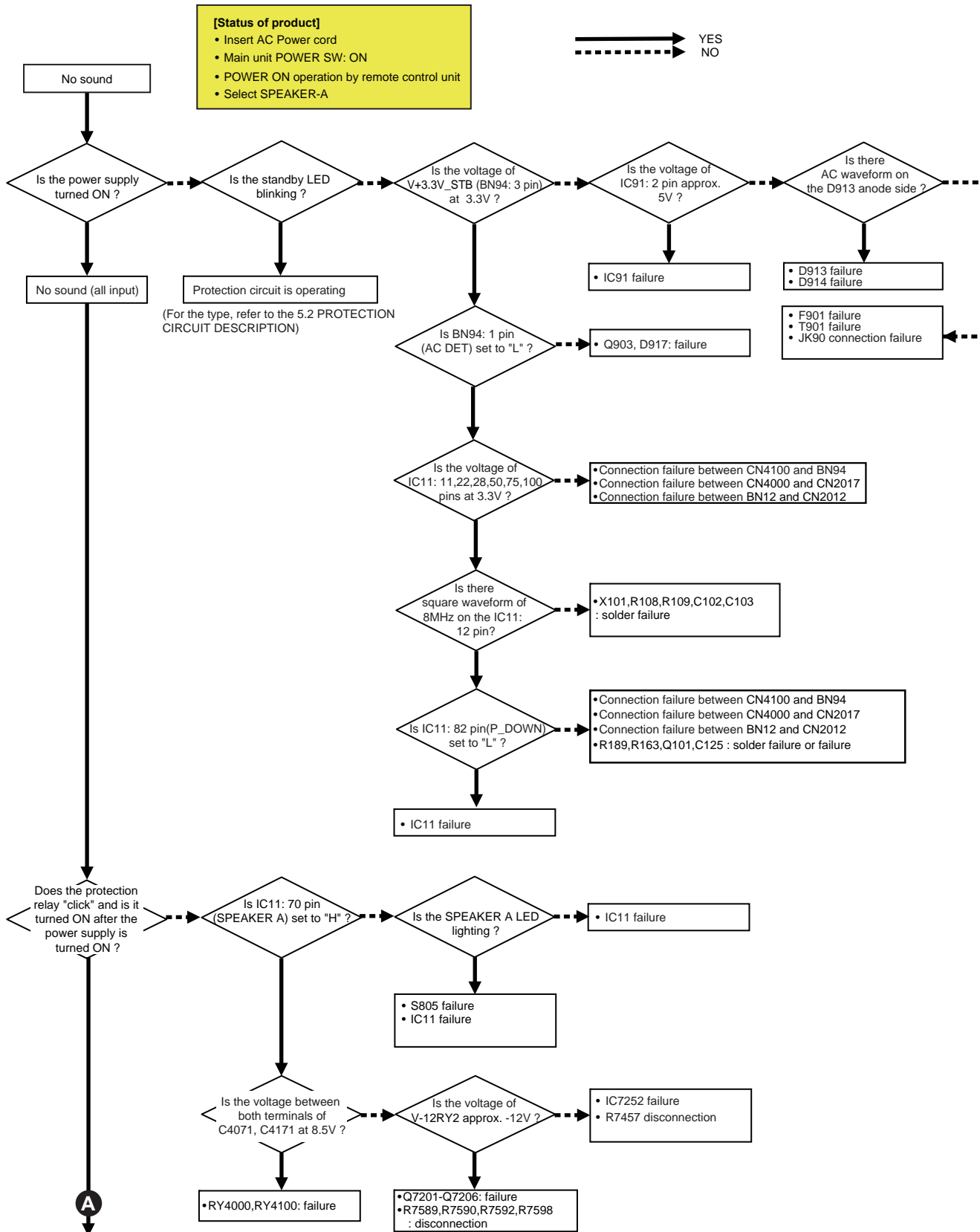


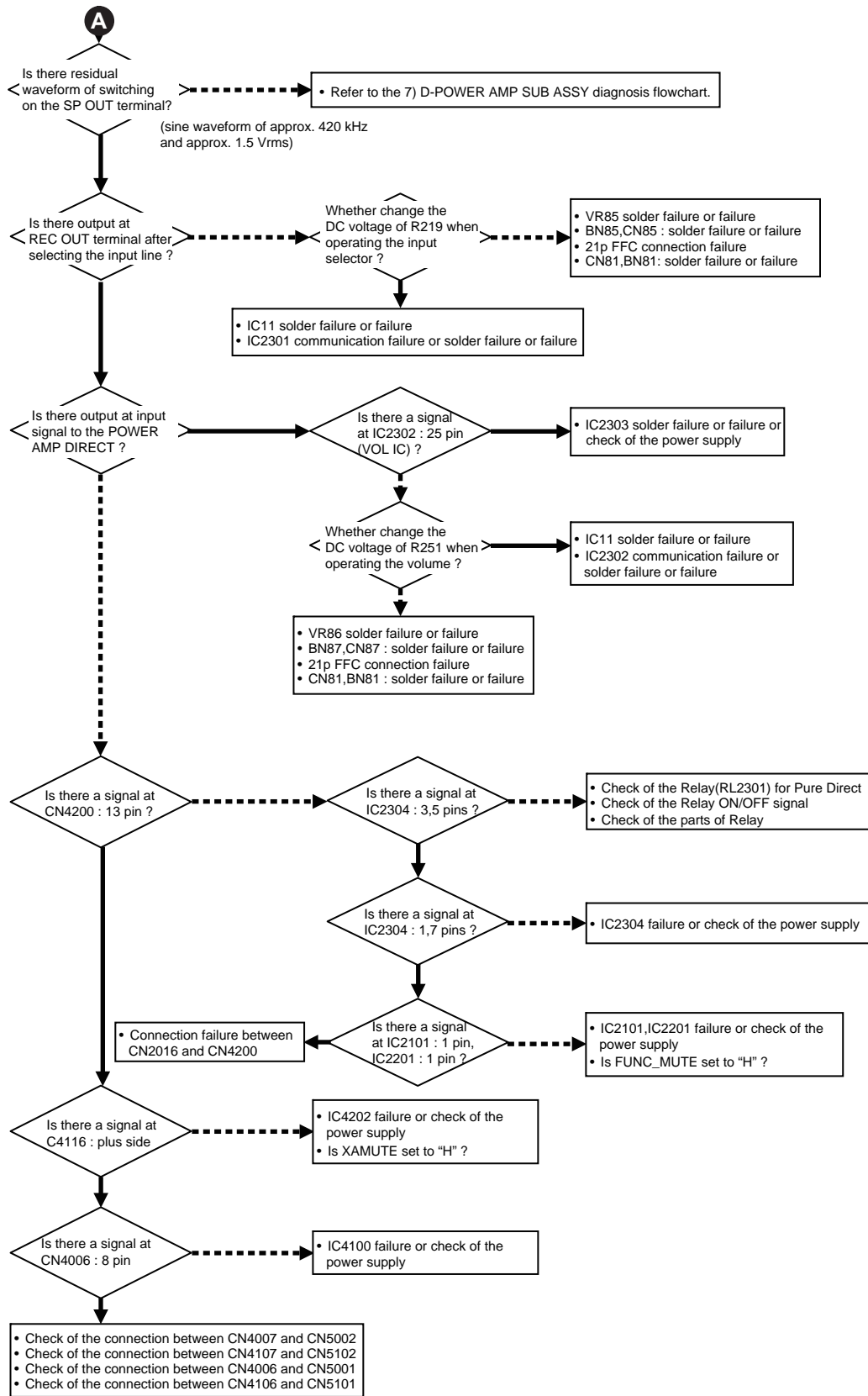
A-70DA-K

5. DIAGNOSIS

5.1 TROUBLESHOOTING

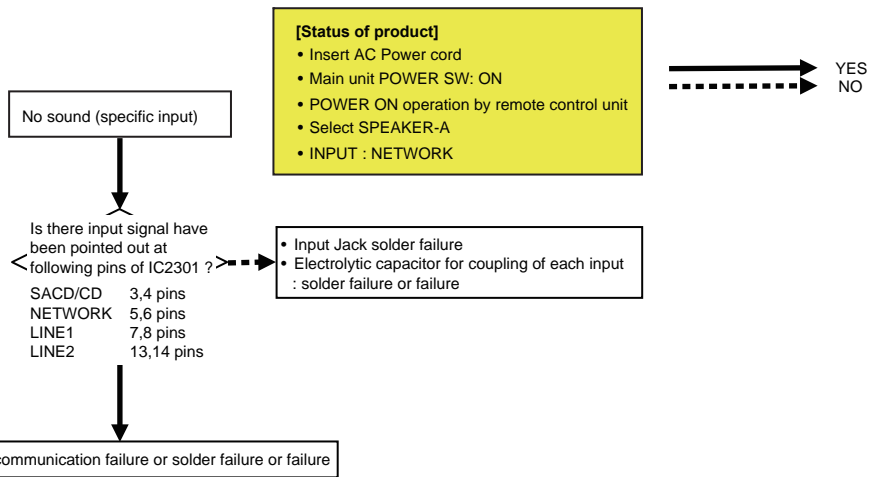
1) No sound





2) No sound (specific input)

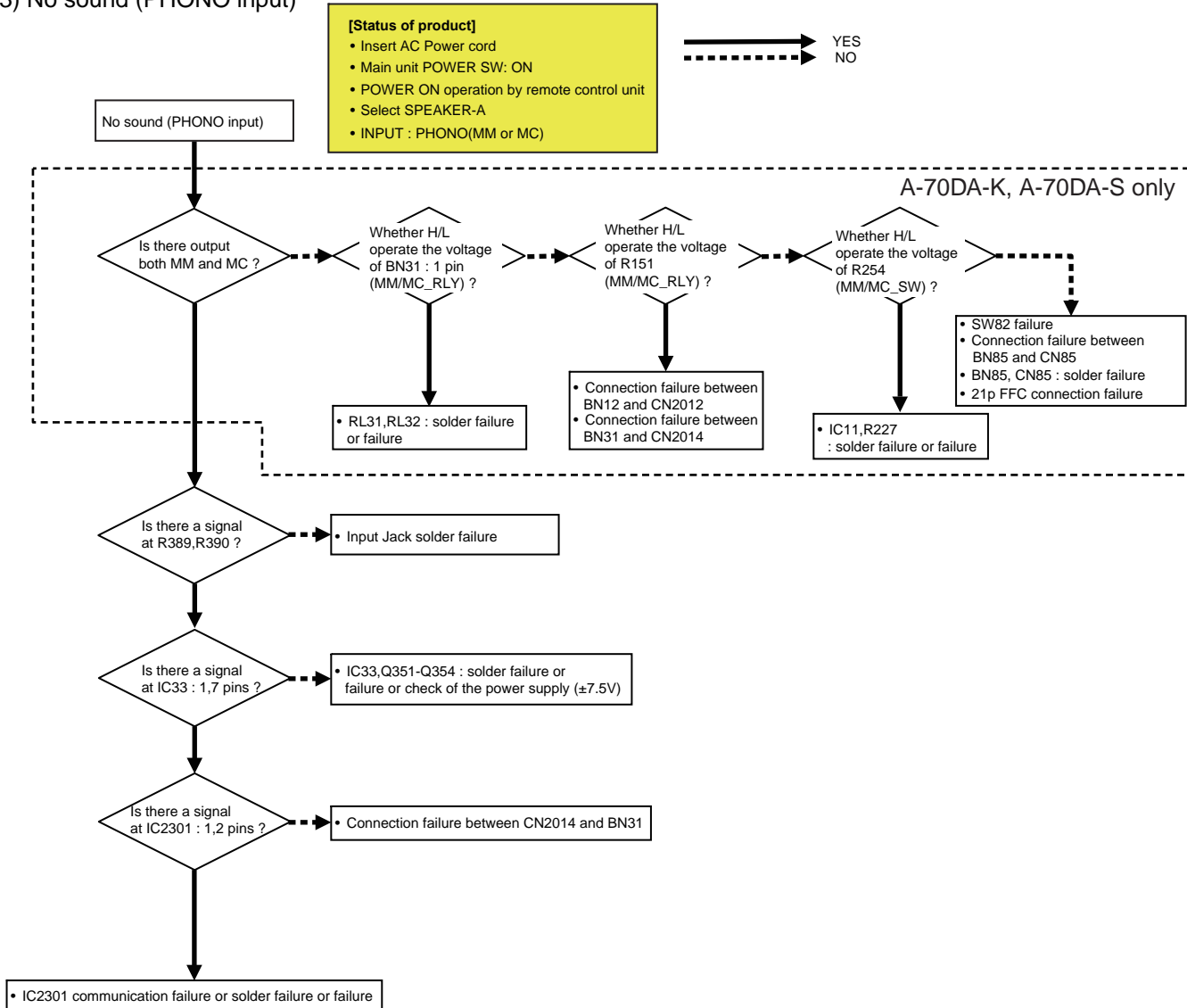
A



B

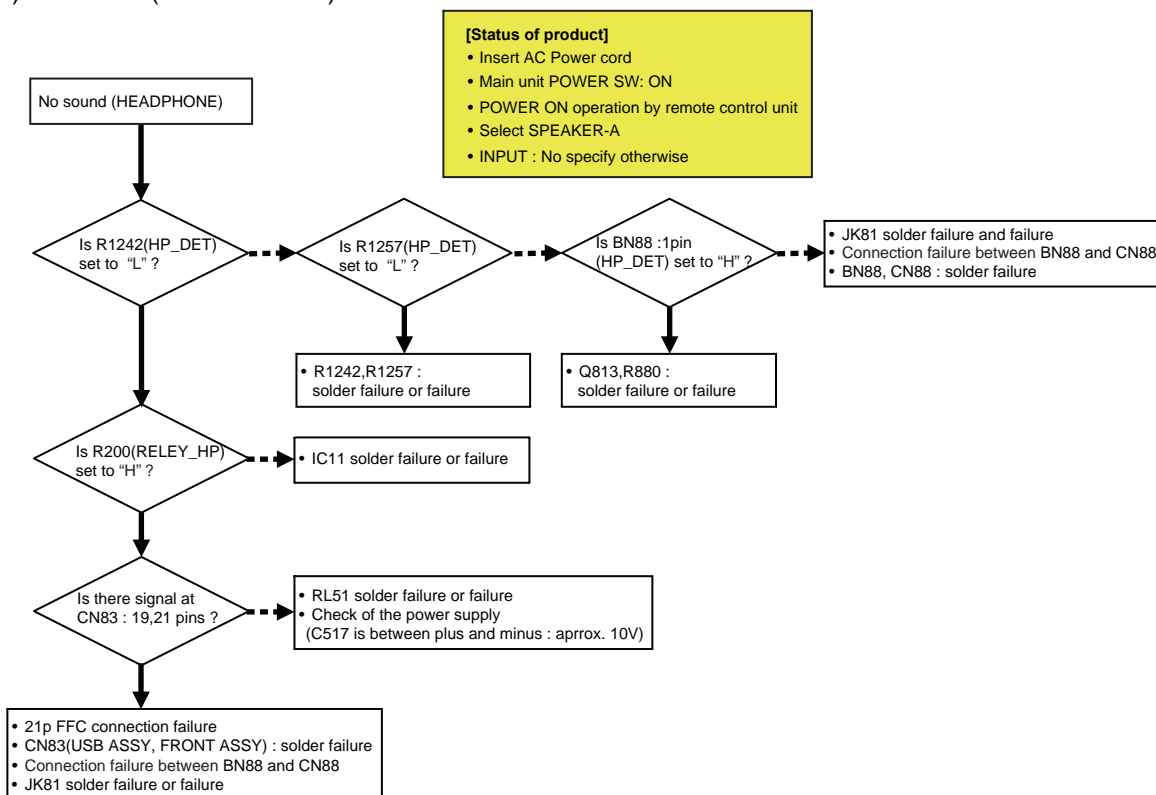
3) No sound (PHONO input)

C

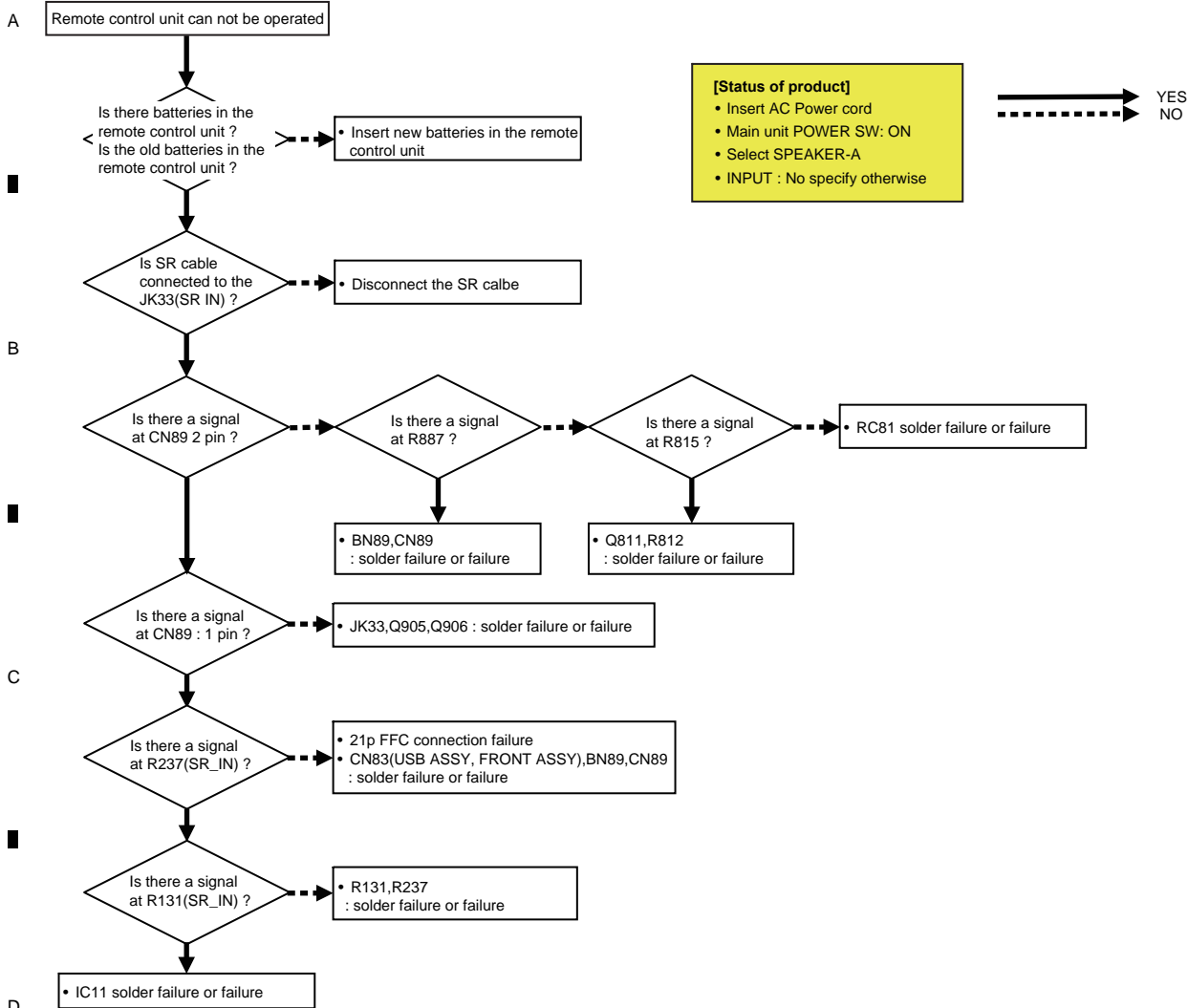


F

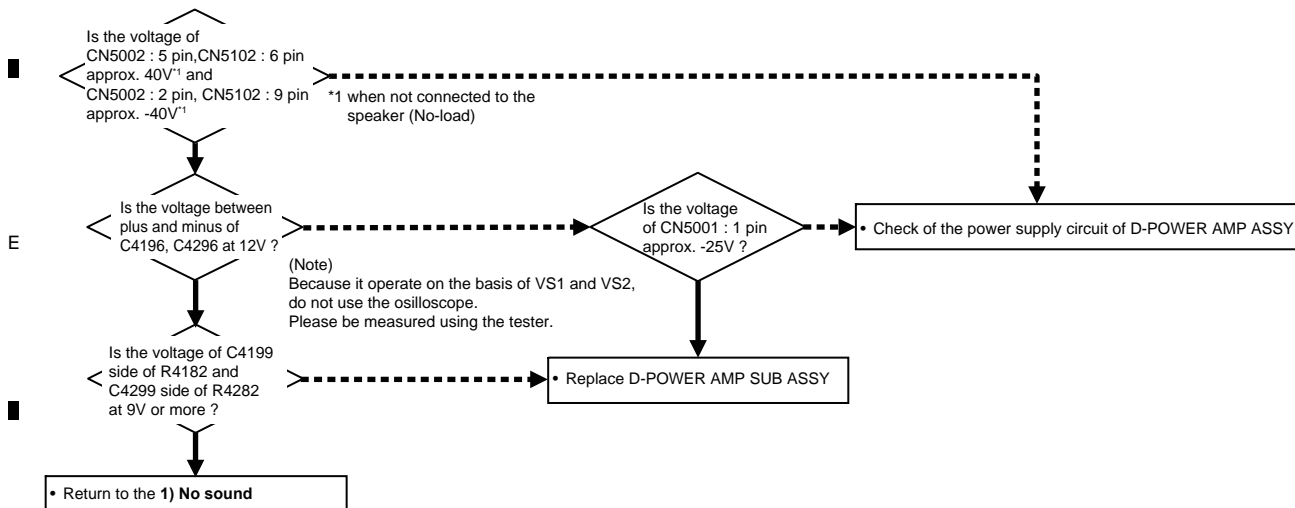
5) No sound (HEADPHONE)



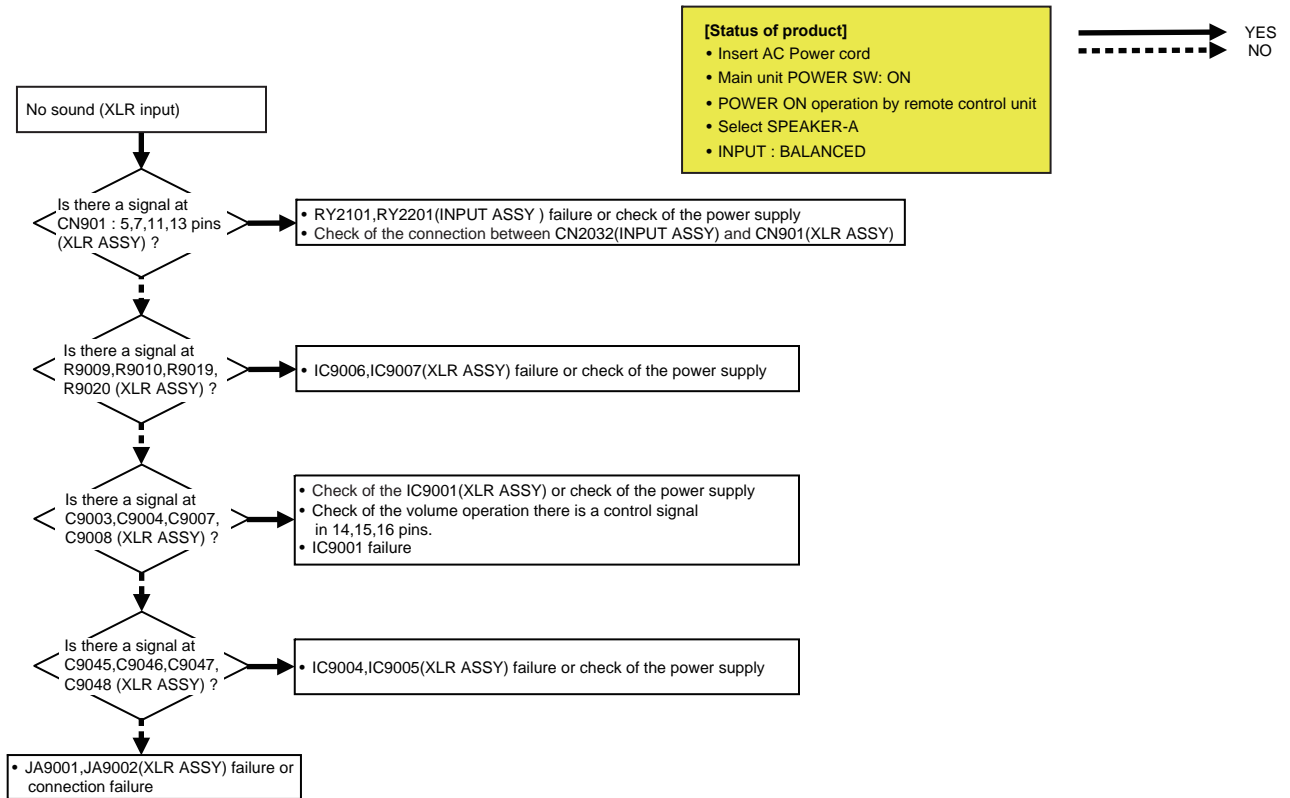
6) Remote control unit can not be operated



7) D-POWER AMP SUB ASSY diagnosis flowchart



8) No sound (XLR input : A-70DA-K, A-70DA-S only)



5.2 PROTECTION CIRCUIT DESCRIPTION

1. PROTECTION operation

Purpose of PROTECTION operation

- Protection of operation due to failure of product
- Protection of operation due to wrong use by a user
e.g.) Rare short of speaker connection is generated, or product is installed by blocking the heat release hole

Detect the L/Rch independently for OVER LOAD, temperature and ZOBEL, and detect 2 ch for the power PROTECTION (main unit side), and perform OR process by software.

1.1 DC DETECT

After DC DETECT is detected, MUTE ON & PROTECTION RELAY OFF are carried out.

If DC DETECT is detected for 3 seconds or more continuously, it is evaluated as "1.1.1 AMP failure" shown below.

If DC DETECT is detected for less than 3 seconds, it is evaluated as 1.1.2 SIGNAL CLIP" shown below.

1.1.1 AMP failure

After DC DETECT is detected, MUTE ON & PROTECTION RELAY OFF are carried out.

Prohibit the power is turned ON for 1 minute.

If DC DETECT is detected again when the power is turned ON next time, it is judged to be "AMP failure," and the power is turned OFF.

If the power supply is automatically turned OFF after AMP failure is detected, all key operations are prohibited (Prohibit the power supply is turned ON).

For turning ON the power supply again, refer to "3. How to reset the prohibition of power ON" shown below.

1.1.2 SIGNAL CLIP

If DC DETECT is detected for less than 3 seconds, it is evaluated as "SIGNAL CLIP".

If the detection of DC DETECT is reset within 3 seconds, MUTE OFF & PROTECTION RELAY ON are carried out.

NOTE) If the detection of DC DETECT is reset within 3 seconds and DC detection functions immediately, PROTECTION RELAY OFF/ON is repeated, however, there is no problem.

1.2 OVER LOAD

MUTE ON & PROTECTION RELAY OFF are carried out immediately after the detection and the power is turned OFF.

After OVER LOAD is detected, the key operation is not prohibited (the power supply can be turned ON).

NOTE) If a short of speaker cable may be generated, the connection is made again and the power supply cannot be turned ON by a user, so a complaint is generated.

If AMP is broken actually, DC detection operates, so there is no problem.

1.3 Temperature PROTECTION

MUTE ON & PROTECTION RELAY OFF are carried out immediately after the detection and the power is turned OFF.

Prohibit the power is turned ON for 1 minute.

NOTE) After the detection, if the temperature is still high even by turning ON the power supply, the temperature PROTECTION is detected again and the power supply is turned OFF.

1.4 Power PROTECTION

MUTE ON & PROTECTION RELAY OFF are carried out immediately after the detection and the power is turned OFF.

If the power supply is automatically turned OFF after the power PROTECTION is detected, all key operations are prohibited (Prohibit the power supply is turned ON).

For turning ON the power supply again, refer to "3. How to reset the prohibition of power ON" shown below.

1.5 ZOBEL PROTECTION

MUTE ON & PROTECTION RELAY OFF are carried out immediately after the detection and the power is turned OFF.

After ZOBEL is detected, the key operation is not prohibited (the power supply can be turned ON).

1.6 Power PROTECTION (D-AMP side)

MUTE ON & PROTECTION RELAY OFF are carried out immediately after the detection and the power is turned OFF.

If the power supply is automatically turned OFF after the power PROTECTION is detected, all key operations are prohibited (Prohibit the power supply is turned ON).

For turning ON the power supply again, refer to "3. How to reset the prohibition of power ON" shown below.

2. Keeping the prohibition of power is turned ON after 1.1.1 AMP failure is detected and 1.4 power PROTECTION is detected

If the power supply is automatically turned OFF after AMP failure is detected and power PROTECTION is detected, all key operations are prohibited (Prohibit the power supply is turned ON).

The power supply is turned ON prohibition status is kept even if the backup is carried out and the power cord is disconnected and inserted.

For turning ON the power supply again, refer to "3. How to reset the prohibition of power ON" shown below.

3. How to reset the prohibition of power ON

Press Front Key [POWER AMP DIRECT] + [SPEAKER B] at the same time for 2 seconds continuously.

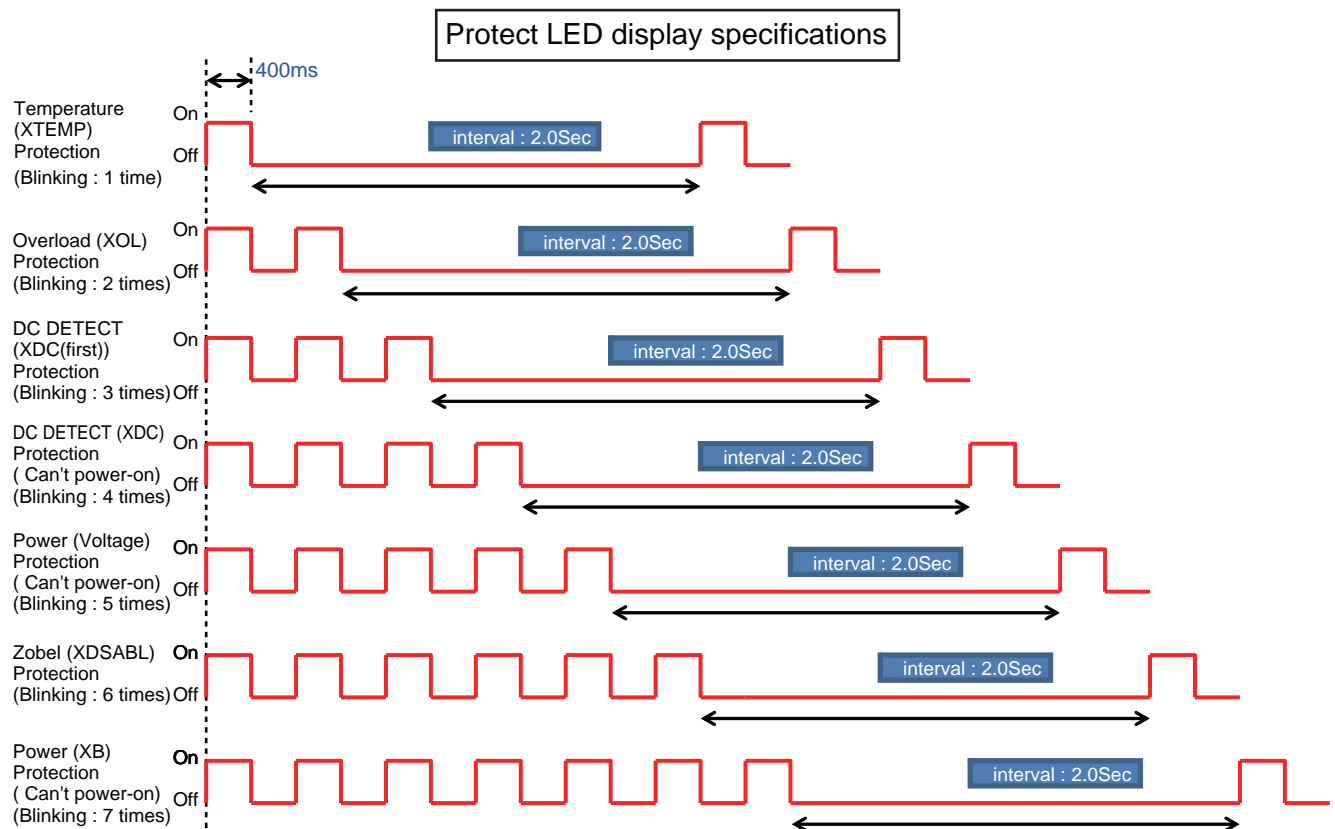
The key prohibition mode after 1.1.1 AMP failure is detected and 1.4 power PROTECTION is detected is canceled and the power is turned ON.

4. STANDBY LED display after PROTECTION is detected

In above each PROTECTION operations, kind of protection circuit are identified by blinking timing of STANDBY LED. Both of illumination time and curfew period blink together with 400 msec, repeat in the interval 2 sec.

The blinking of LED is continued until the power is turned ON again.

For the blinking specification of LED, refer to "Protect LED display specifications" shown below.



6. SERVICE MODE

There is no information to be shown in this chapter.

7. DISASSEMBLY

- Note 1 :** Even if the unit shown in the photos and illustrations in this manual may differ from your product, the procedures described here are common.

Note 2 : As for the assembling, please perform assembling following to the opposite procedures of How to Disassemble.
If any notes are existed, please follow those instructions.

Note 3 : Before starting the diagnosis, wait for three minutes until the electricity of the unit is discharged.

[1] Disassembly

[1-1] Exterior

[1-1-1] Top Cabinet, Side Panel (Case of A-70DA-K, A-70DA-S)

- (1) Remove the six screws, using the hex key (2.5mm).
(A-70DA-K: CHD1A080FFZRP)
(A-70DA-S: CHD1A080FFCP)

(2) Remove the three screws.
(VTB3+6JFZR)

(3) Remove the Top Cabinet.

Note on assembling

To attach the Top Cabinet, refer to the “[4-5-2] Top Cabinet”.

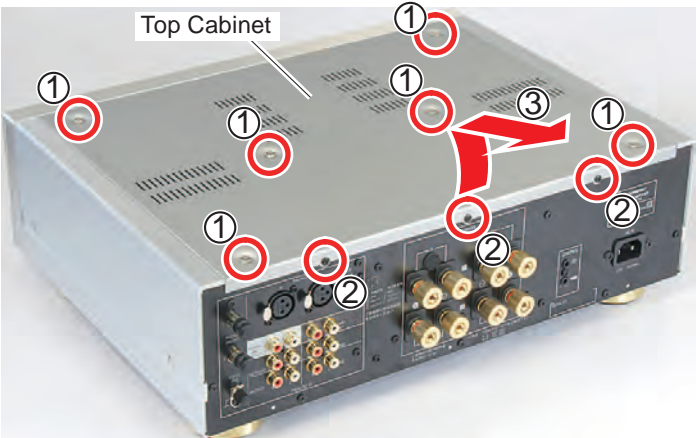
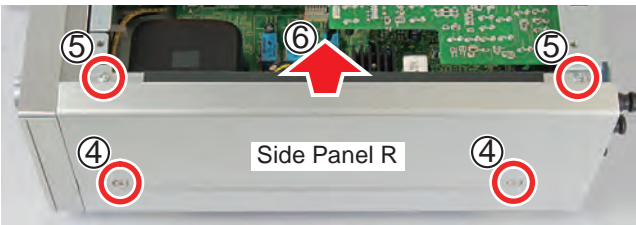


Photo: A-70A

- (4) Remove the four screws, using the hex key (2.5mm).
(A-70DA-K: CHD1A080FFZRP)
(A-70DA-S: CHD1A080FFCP)

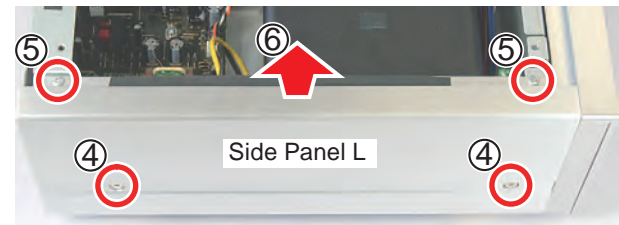
(5) Remove the four screws.
(VTB3+6JR)

(6) Remove the Side Panel R and Side Panel L.



Note on assembling

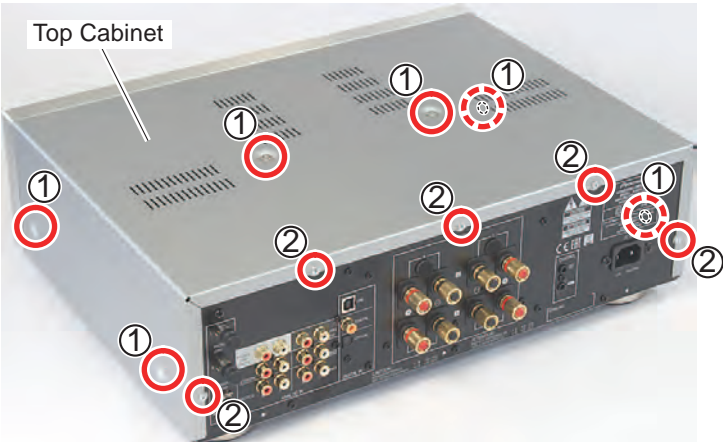
To attach the Side Panel, refer to the “[4-5-1] Side Panel-R, Side Panel-L”.



[1-1-2] Top Cabinet (Case of A-50DA-K, A-50DA-S)

- (1) Remove the six screws, using the hex key (2.5mm).
(A-50DA-K: CHD1A080FFZRP)
(A-50DA-S: CHD1A080FFCP)

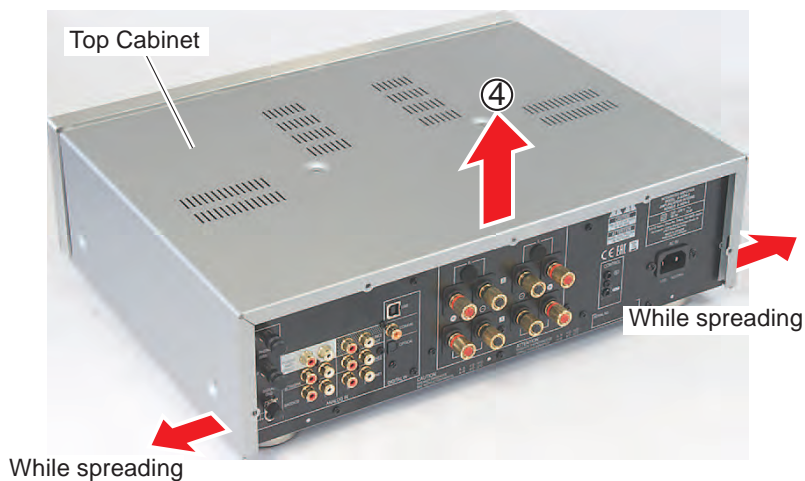
(2) Remove the five screws.
(VTB3+6JFZR)



- (3) Insert nails between the Top Cabinet and Rear Panel and then pull the Top Cabinet backward horizontally.



- (4) Take out the Top Cabinet upward while spreading the Rear Side Piece.

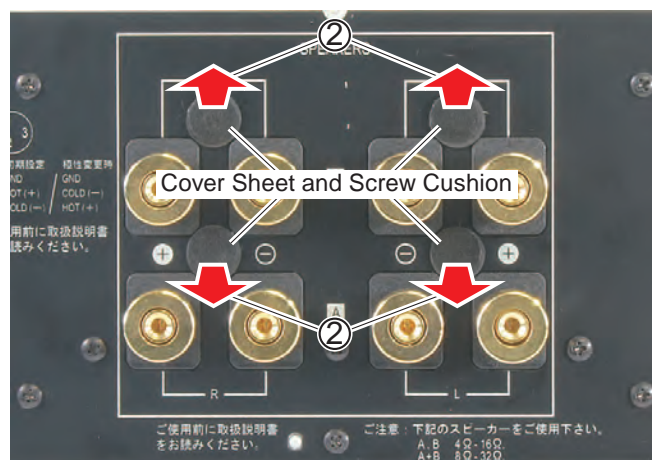
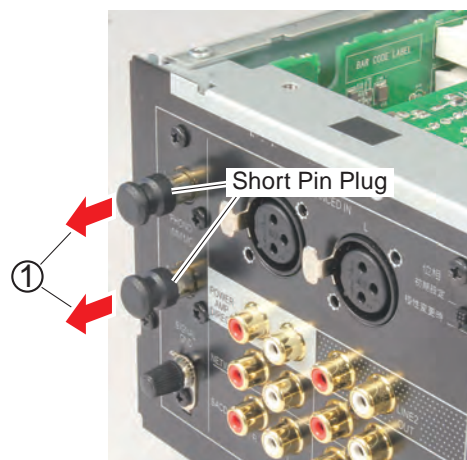


[1-1-3] Rear Panel

- (1) If the Short Pin Plug is attached, remove it.
- (2) Remove the four sets of Cover Sheet and Screw Cushion.

Note on assembling

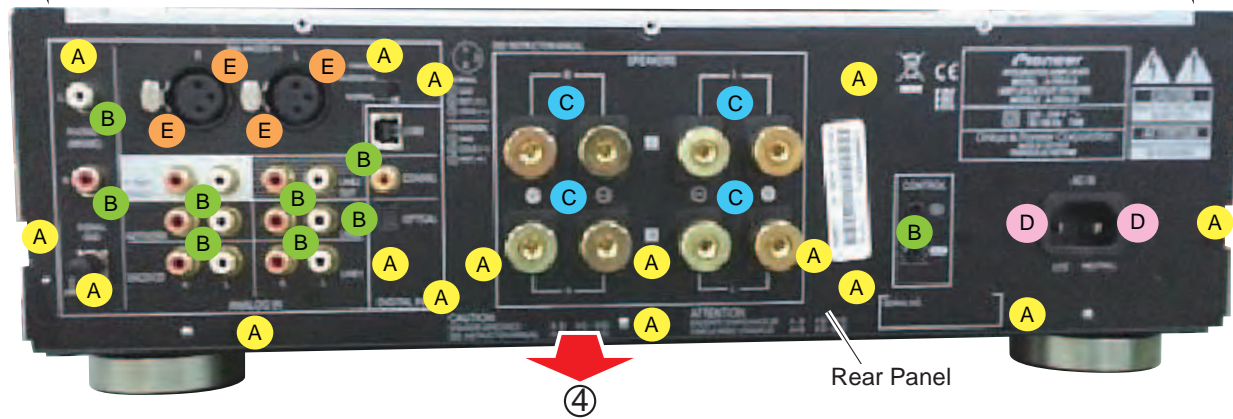
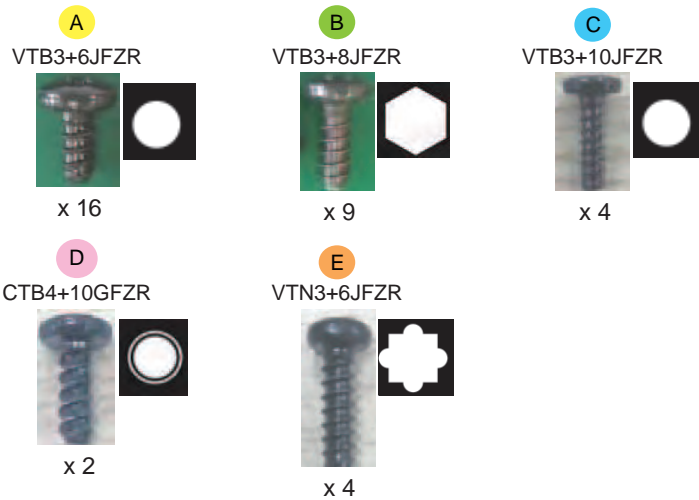
Attach the new Cover Sheets and new Screw Cushions.



[Case of A-70DA-K, A-70DA-S]

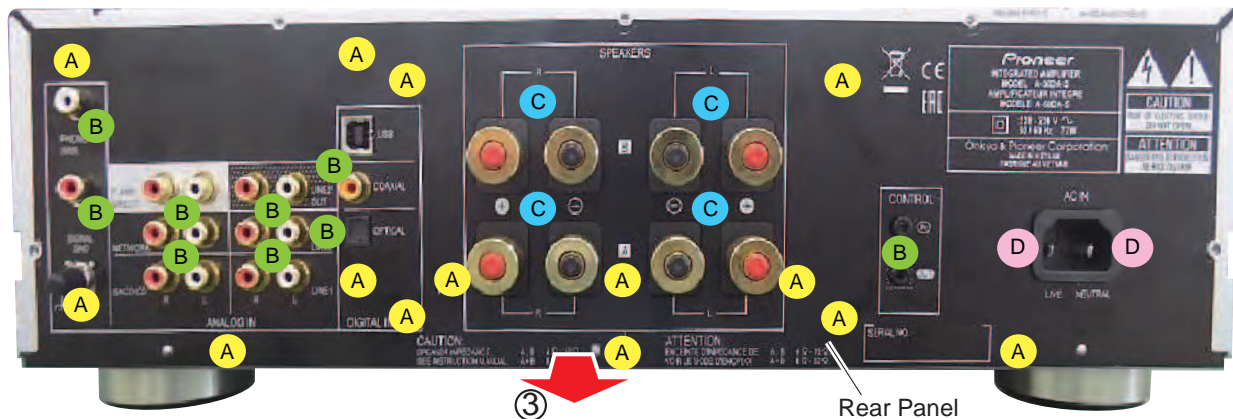
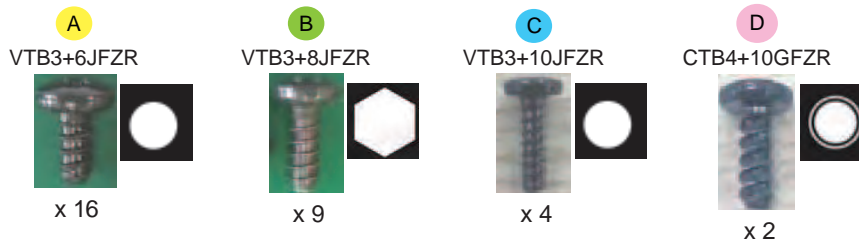
(3) Remove the two screws. (VTB3+6JR)

A (4) Remove the rear side 35 screws and then remove the Rear Panel.



[Case of A-50DA-K, A-50DA-S]

D (3) Remove the rear side 31 screws and then remove the Rear Panel.



[1-2] XLR ASSY, CONNECTOR ASSY, PHONO ASSY, USB ASSY and INPUT ASSY

Remove the Top Cabinet and Rear Panel.

[A-70DA-K, A-70DA-S only]

Remove the Side Panel R.

(Refer to the “ [1-1] Exterior”.)

(1) [A-70DA-K, A-70DA-S: MP 1st lot only]

Remove the screw. (VTB3+6JR)

(2) [A-70DA-K, A-70DA-S only]

Disconnect the connector and then remove the XLR ASSY.

(3) [A-70DA-K, A-70DA-S only]

Remove the screw. (VTB3+6JR)

(4) [A-70DA-K, A-70DA-S only]

Disconnect the connector and then remove the CONNECTOR ASSY.

Front

(5) [A-70DA-K, A-70DA-S only]

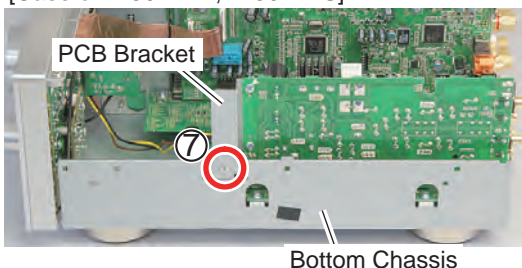
Remove the four screws. (VTB3+6JR)

(6) [A-70DA-K, A-70DA-S only]

Remove the Side Frame.

(7) Remove the screw. (VTB3+6JR)

[Case of A-50DA-K, A-50DA-S]



(8) Release the Secondary Side Cable of Power Trans from the PCB binder.

(9) Disconnect the connector.

(10) Disconnect the two connectors and then remove the PHONO ASSY (with the PCB Bracket).

Front

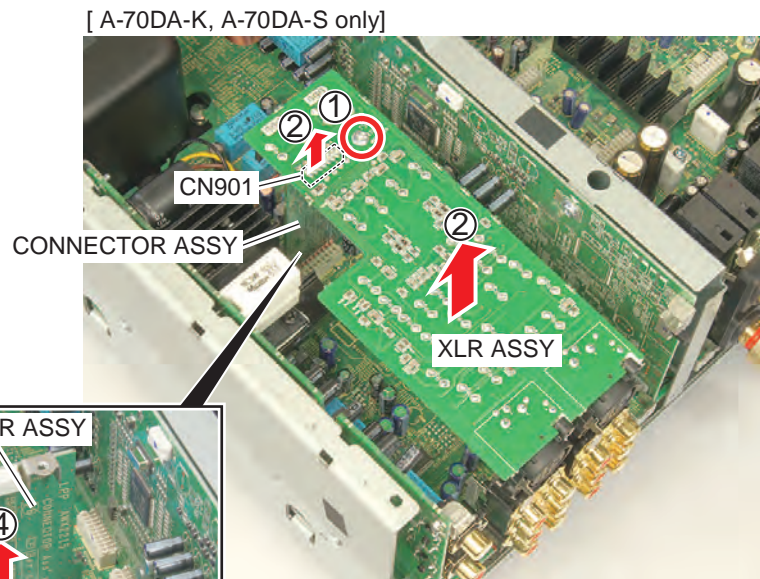
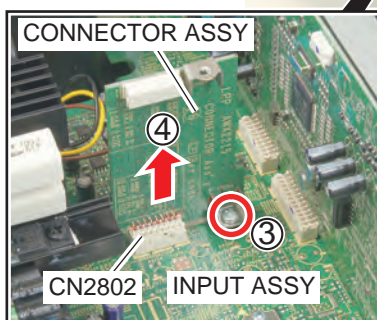
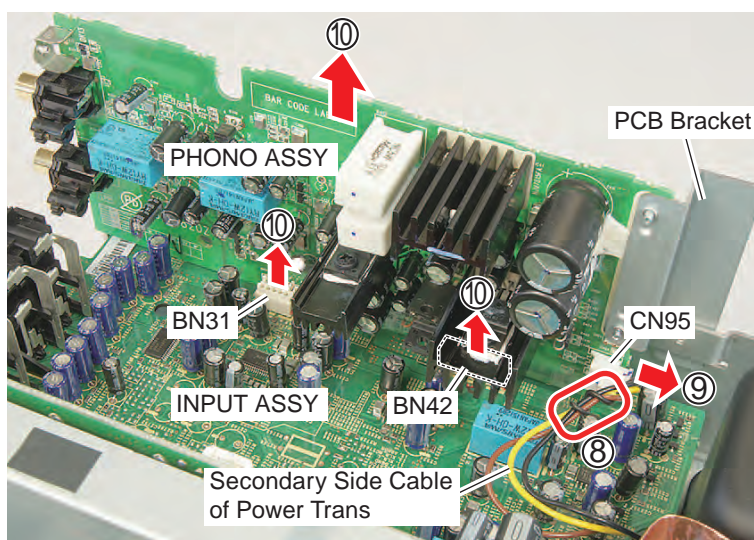
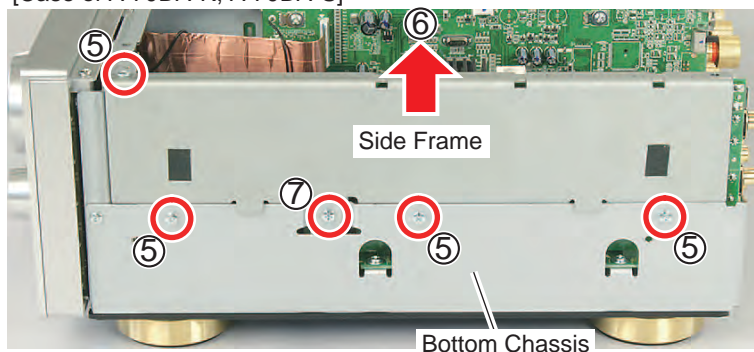


Photo: A-70A

[A-70DA-K, A-70DA-S only]



[Case of A-70DA-K, A-70DA-S]



(11) Release the 21P FFC (Shielded) from the PCB binder.

(12) Disconnect the two connectors.

(13) Remove the two screws.
(VTB3+6JR)

(14) Disconnect the three connectors and then remove the USB ASSY.

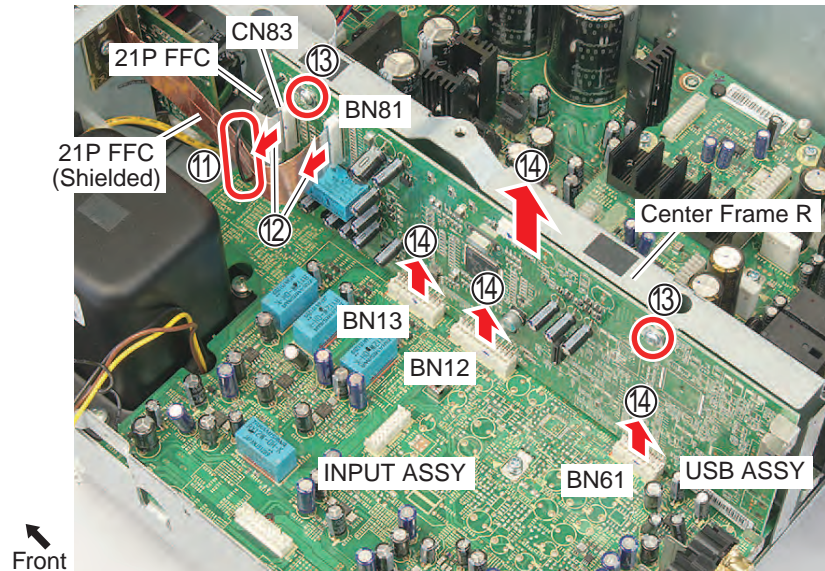


Photo: A-70A

(15) Disconnect the two connectors.

(16) Remove the screw. (CHD2A060R)

(17) Remove the four screws. (VTB3+6JR)

(18) Remove the INPUT ASSY.

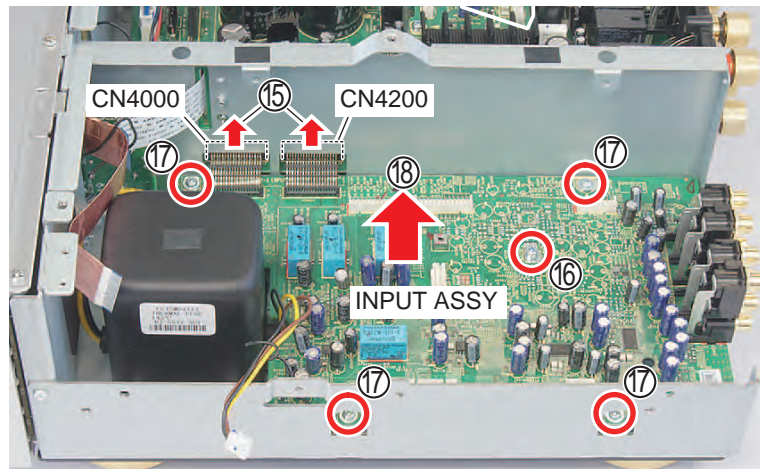


Photo: A-70A

[1-3] D-POWER AMP MAIN ASSY, D-POWER AMP SUB ASSY

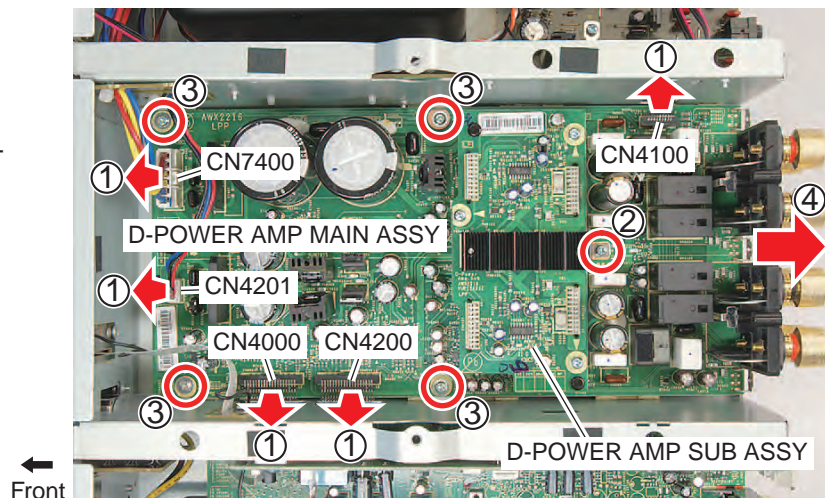
Remove the Top Cabinet and Rear Panel.
(Refer to the "[1-1] Exterior".)

(1) Disconnect the five connectors.

(2) Remove the screw. (CHD2A060R)

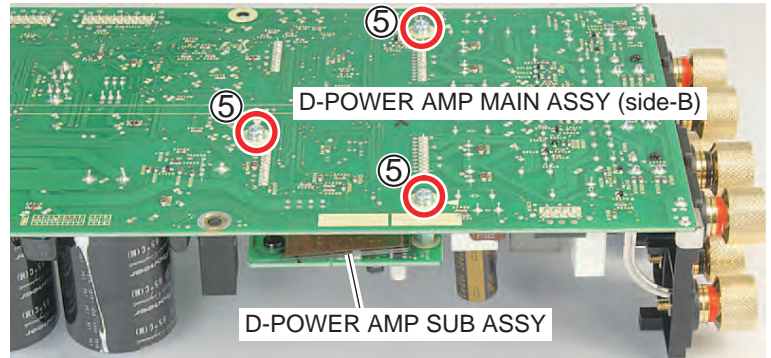
(3) Remove the four screws. (VTB3+6JR)

(4) Slide the D-POWER AMP MAIN ASSY (with the D-POWER AMP SUB ASSY) to the rear side and remove it.

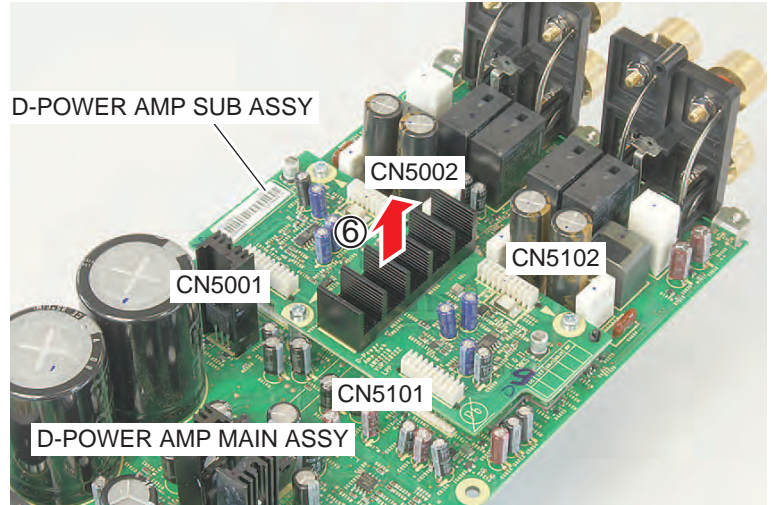


• Top view

- (5) Remove the three screws. (CHD2A060R)



- (6) Pull the D-POWER AMP SUB ASSY straightly and disconnect the four connectors, and then remove the D-POWER AMP SUB ASSY.

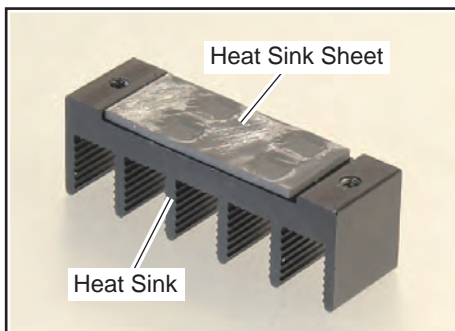
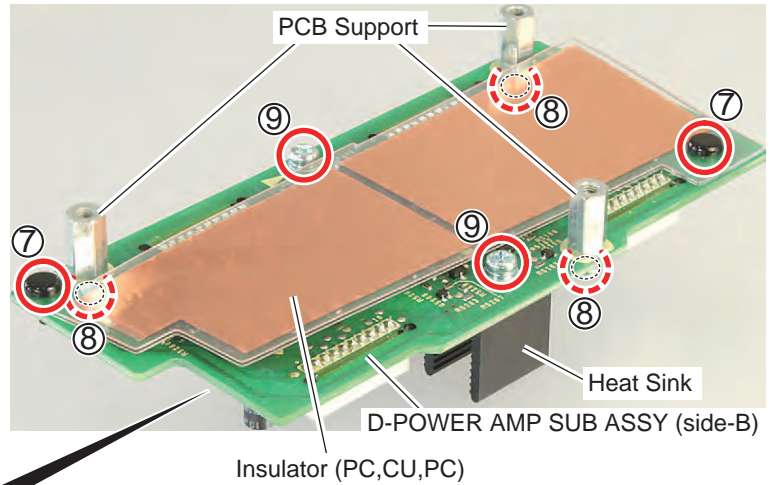


- (7) Remove the two sets of Rivet and then remove the Insulator (PC,CU,PC).

Note on assembling

Attach the two set Rivets from the side-B of D-POWER AMP SUB ASSY.

- (8) While holding the PCB Support, remove the three screws (CHD2A060R) on the side-A of D-POWER AMP SUB ASSY.
- (8) Remove the Heat Sink (with the Heat Sink Sheet) by removing the two screws. (CHD2A060R)



[1-4] Front Section

Remove the Top Cabinet.

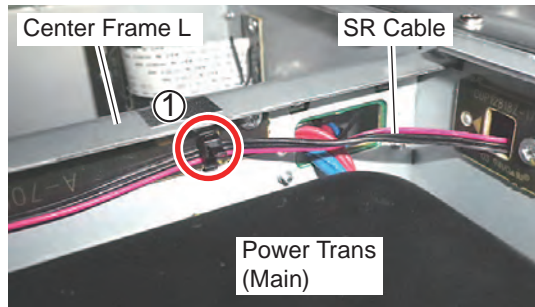
[A-70DA-K, A-70DA-S only]

Remove the Side Panel L.

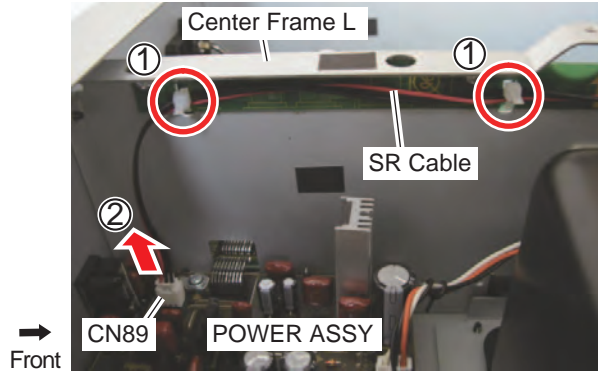
(Refer to the “ [1-1] Exterior”.)

(1) Cut the three Clampers.

→
Front



(2) Disconnect the connector.



(3) Release the 21P FFC from the PCB binders.

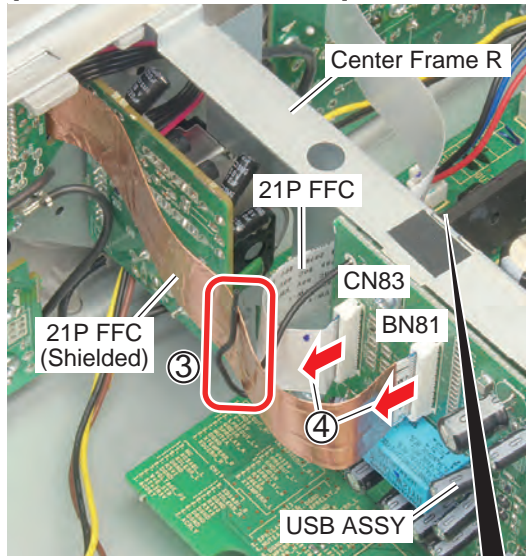
(A-70DA-K, A-70DA-S: Four)

(A-50DA-K, A-50DA-S: Two)

(4) Disconnect the two connectors.

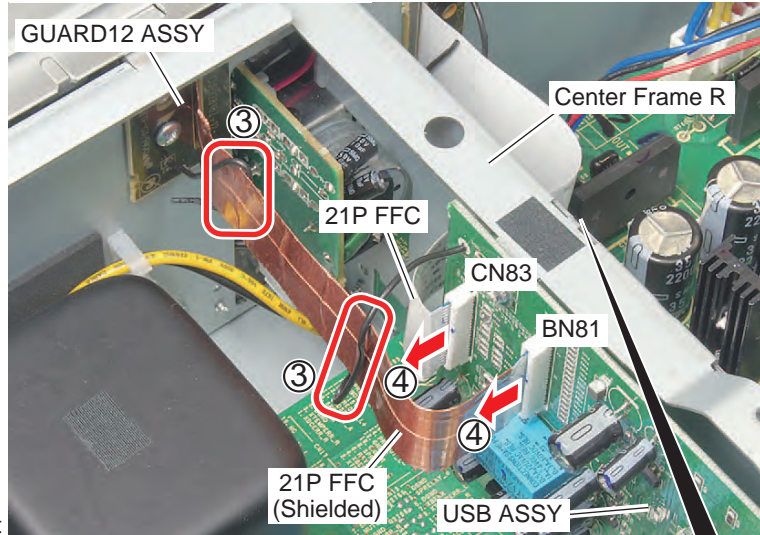
(5) Pull out the 21P FCC from the slit of GUARD13 ASSY that is attached to the Center Frame R.

[Case of A-50DA-K, A-50DA-S]

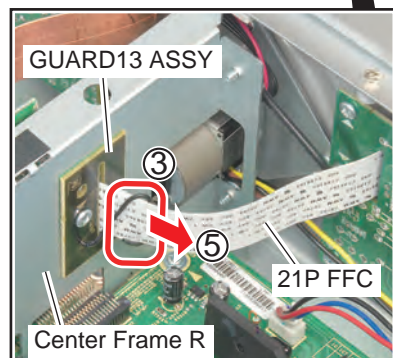
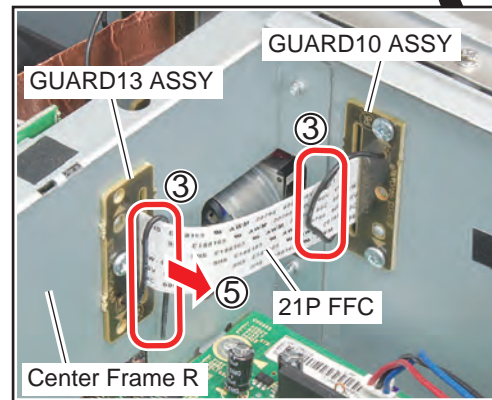


→
Front

[Case of A-70DA-K, A-70DA-S]



→
Front



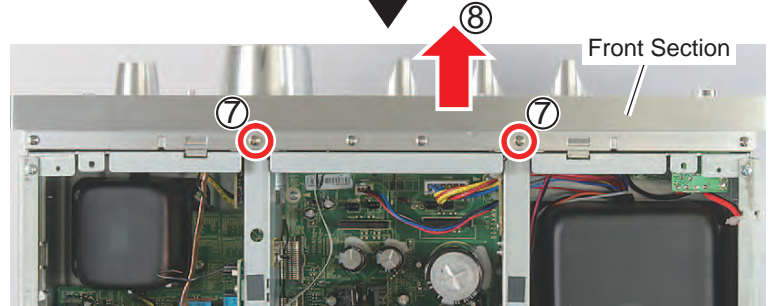
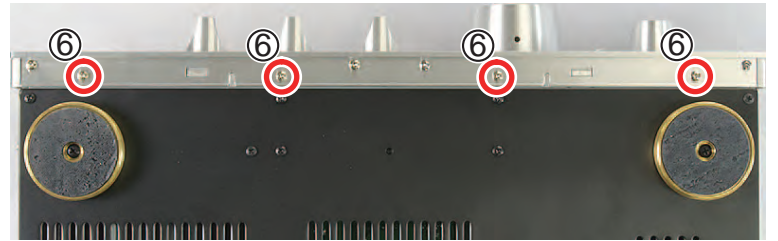
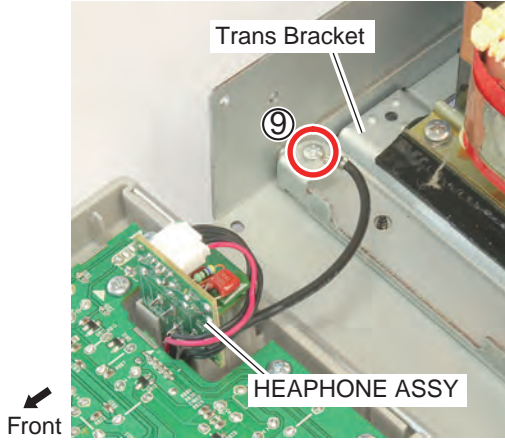
- (6) Remove the four screws.
 (A-70DA-K, A-50DA-K: VTB3+8JFZR)
 (A-70DA-S, A-50DA-S: VTB3+8JFC)

- (7) Remove the two screws.
 (A-70DA-K, A-50DA-K: VTB3+8JFZR)
 (A-70DA-S, A-50DA-S: VTB3+8JFC)
 (8) Remove the Front Section.

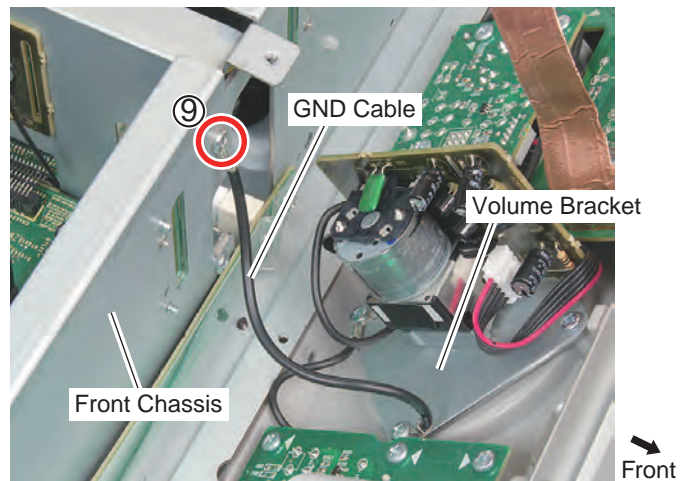
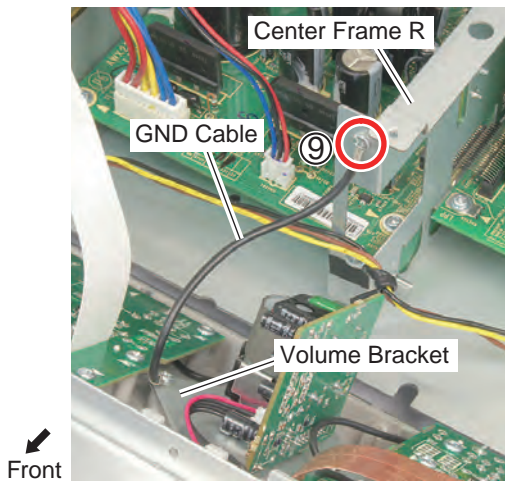
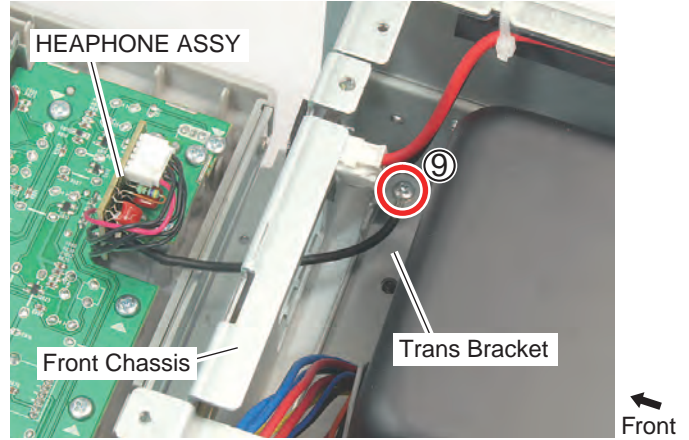
- (9) Remove the two screws. (VTB3+6JR)

Note: [A-50DA-K, A-50DA-S only]
 When you carry out the diagnosis of Front Section, it is not necessary to unscrew these two screws.

[Case of A-50DA-K, A-50DA-S]



[Case of A-70DA-K, A-70DA-S]

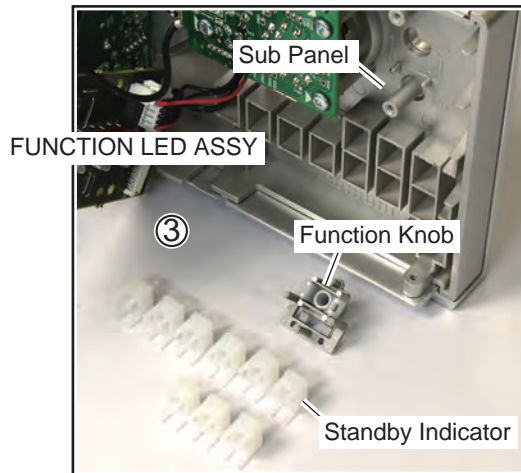
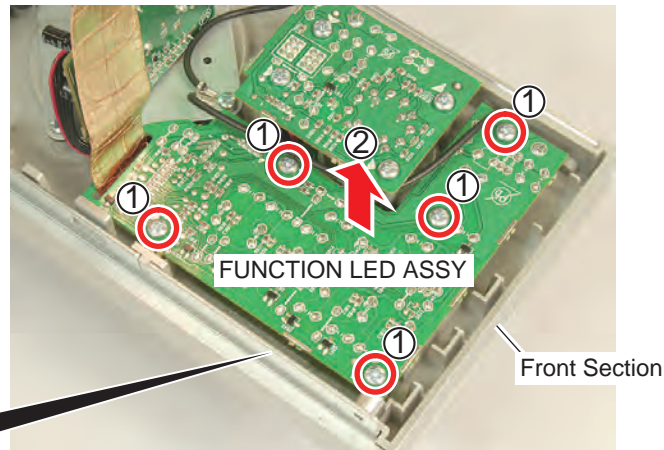


[2] Diagnosis

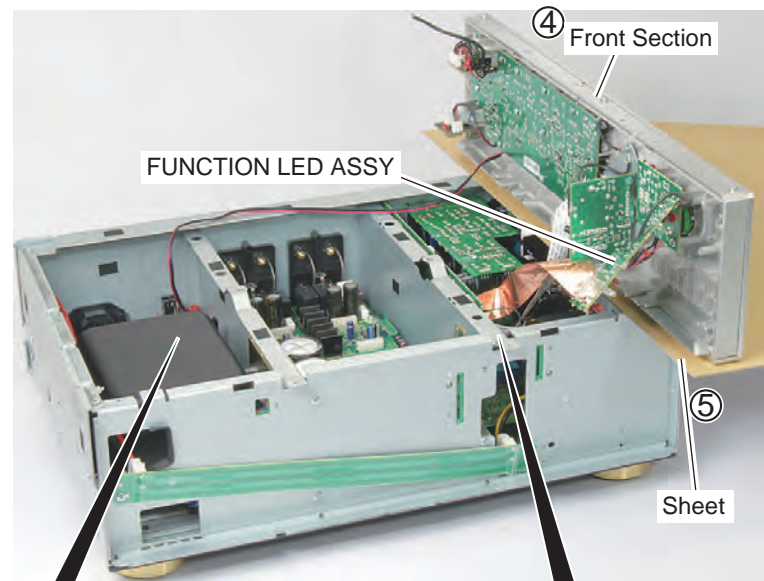
Remove the Front Section.
(Refer to the “ [1-4] Front Section”.)

[Case of A-70DA-K, A-70DA-S]

- (1) Remove the five screws. (VTB3+10JR)
- (2) Remove the FUNCTION LED ASSY.
- (3) Remove the Funktion Knob and Standby Indicators from the Sub Panel.

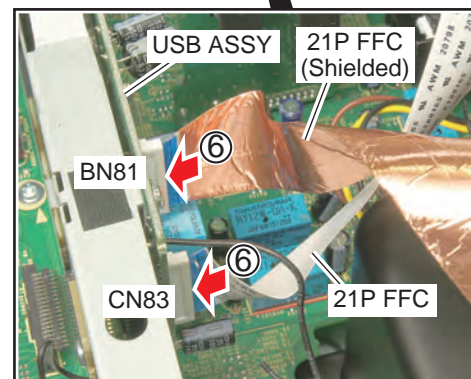
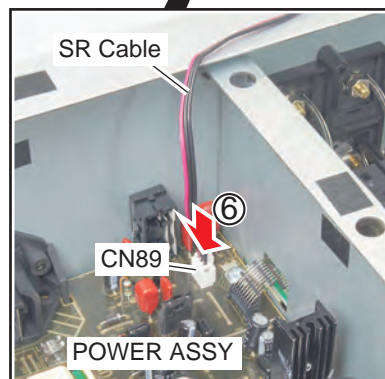


- (4) Turn the Front Section upside down and then arrange it as shown in the photo.
- (5) Insert the sheet. (To prevent the Front Section from being hurt.)



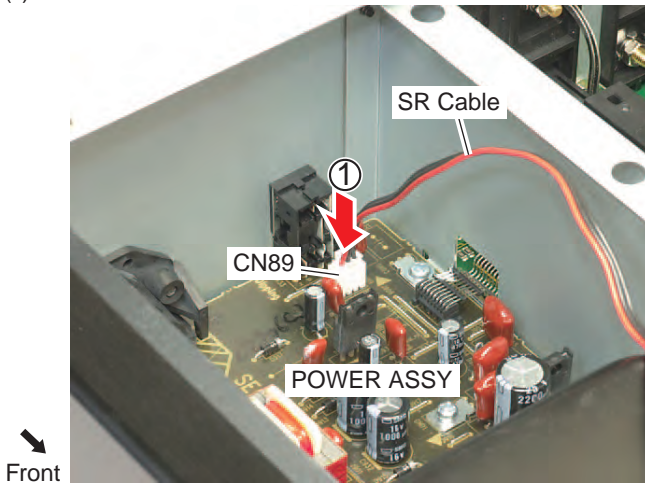
- (6) Connect the three connectors.

Note: Be careful about mistakes of the connection at two 21P FFCs.

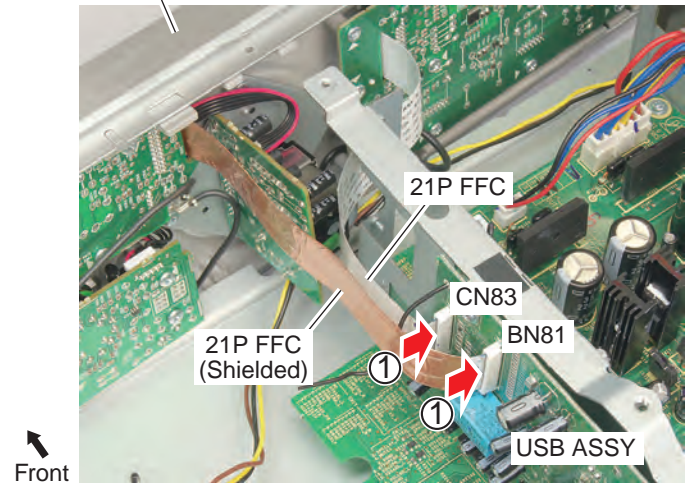


[Case of A-50DA-K, A-50DA-S]

(1) Connect the three connectors.



Front Section



[3] Notes on disassembly and assembly Tone Knob ASSY

[3-1] Disassembly

- To remove the Tone Knob ASSY (BASS, TREBLE, BALANCE), operate them at the center position.

Otherwise, the force to remove the Tone Knob ASSY breaks the encoder, and center-click feeling is lost.

[3-2] Assembly

- Also to attach the Tone Knob ASSY, operate them at the center position.
- Before assembling them, turn the Encoder Axis by hand, and confirm that you feel center-click.

If you don't feel it, replace the part.



< Turn the mark to the topside >



< Turn the flat side to the bottom >

[4] Notes on assembling

[4-1] Styling of cables

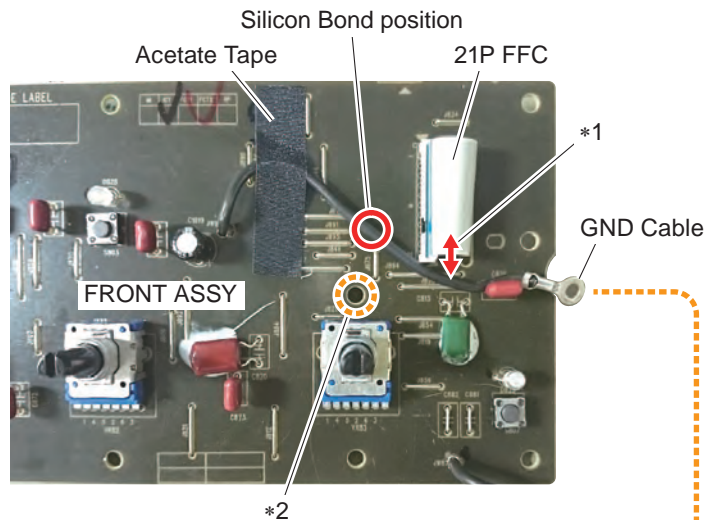
When you attach each unit, make styling, connection of cables and other parts as shown in the photo.

[4-1-1] Front Section

- (1) Fix the GND Cable to the FRONT ASSY using the Silicon Bond (GYA1011) and Acetate Tape (Part No.: C4FS101BL, 10 x 70mm, cut into 40mm).

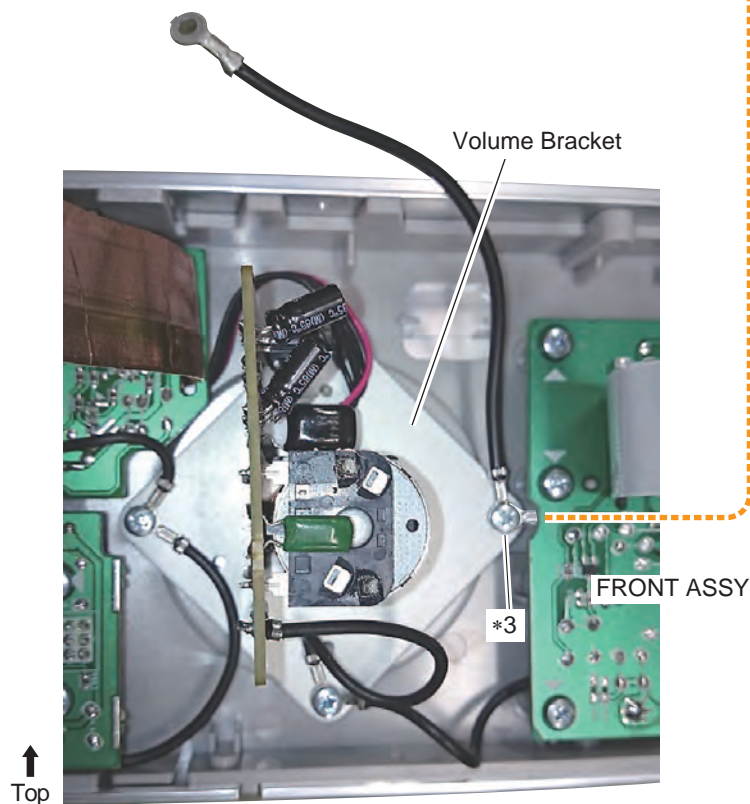
*1: GND Cable should not lap over the 21P FFC.

*2: Silicon Bond should not be applied on this part because boss touches here.



- (2) Connect the GND Cables to the Volume Bracket.

*3: Fix the GND Cable shown above here.

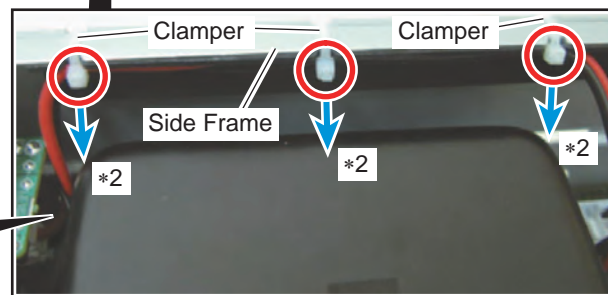
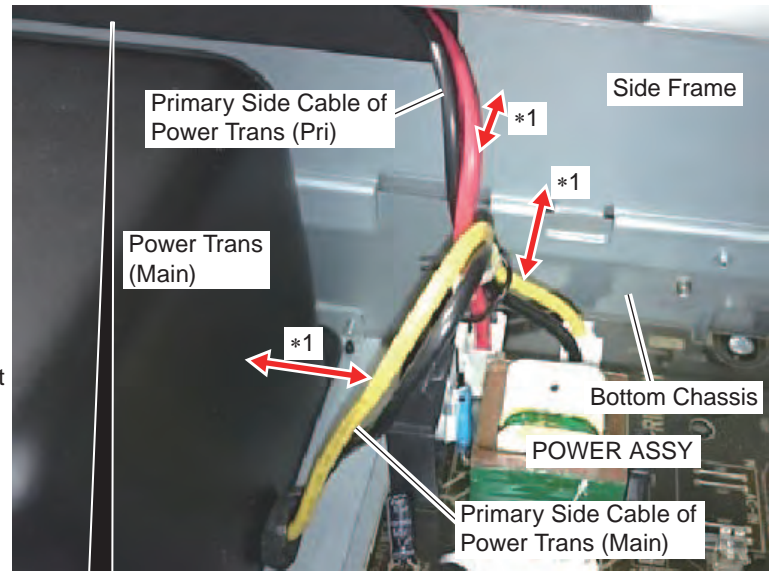
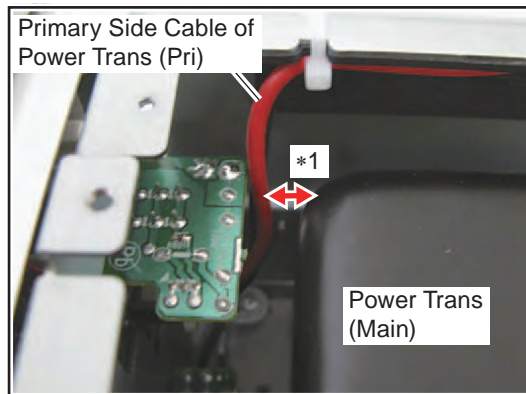


[4-1-2] Case of A-70DA-K, A-70DA-S

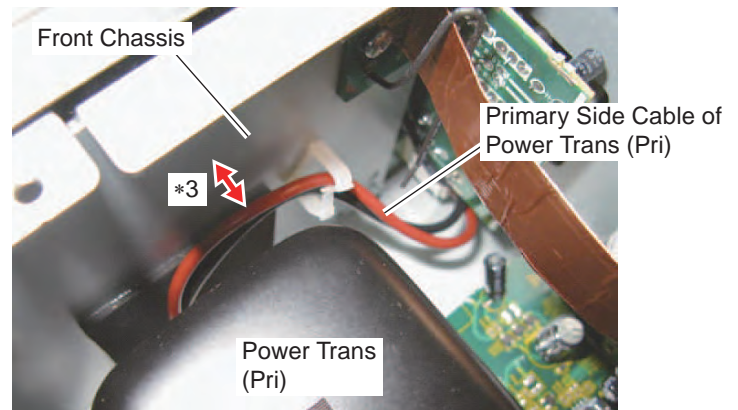
(1) Primary Side Cables of the Power Trans

- *1: Does not contact the Primary Side Cables with metal.
Do not contact it with the case of Power Trans (Main), Side Frame and Bottom Chassis.
- *2: Aim the head parts of three Clampers that is attached to the Side Frame downward so that they do not contact the Side Panel L.

←
Front

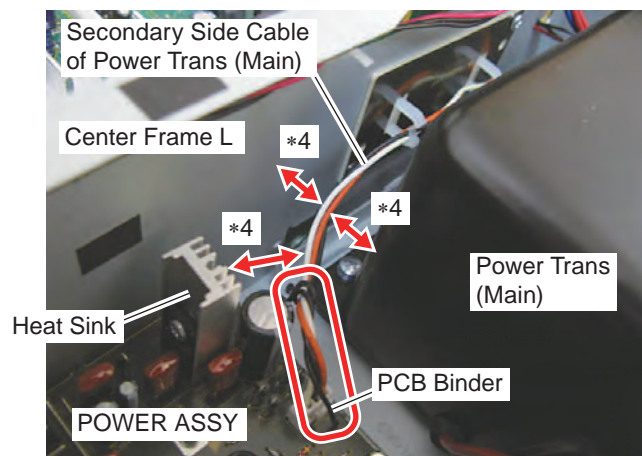


- *3: Do not contact the Primary Side Cable with metal.
Do not contact it with the Front Chassis.



(2) Secondary Side Cable of the Power Trans

- *4: Do not contact the Secondary Side Cable with metal.
Do not contact it with the case of Power Trans (Main), Center Frame L and Heat Sink, using the PCB Binder.

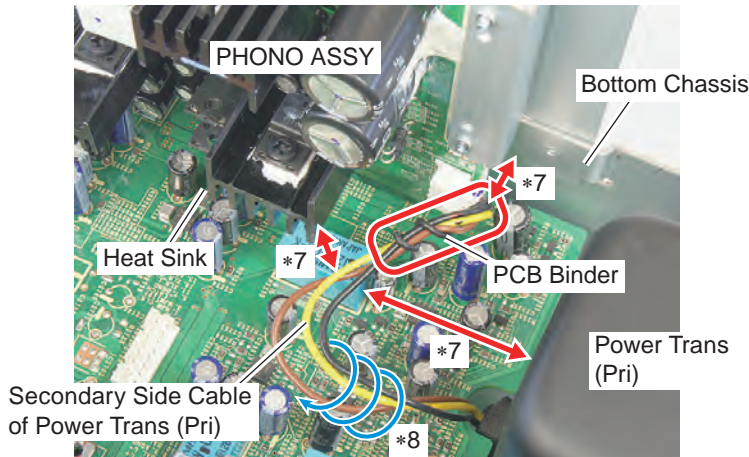
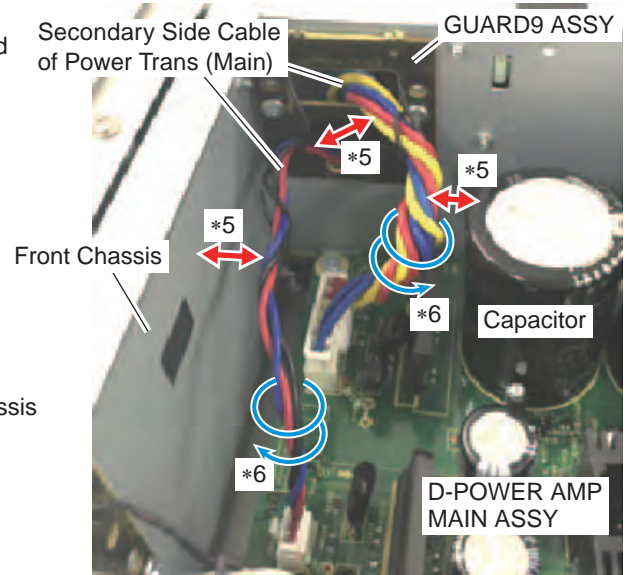


*5: Make styling Secondary Side Cables as shown in the photo. Does not contact them with the Front Chassis, Capacitor and other cables.

*6: Twist the Secondary Side Cables two times.

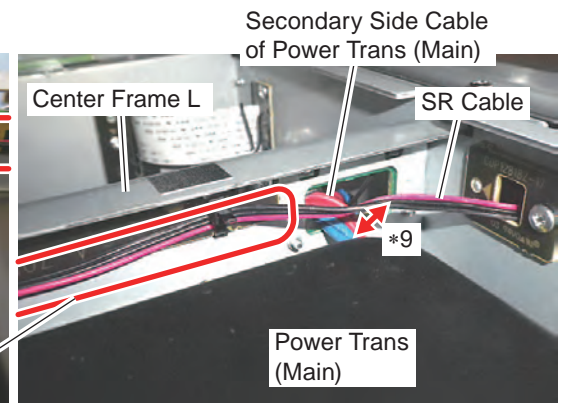
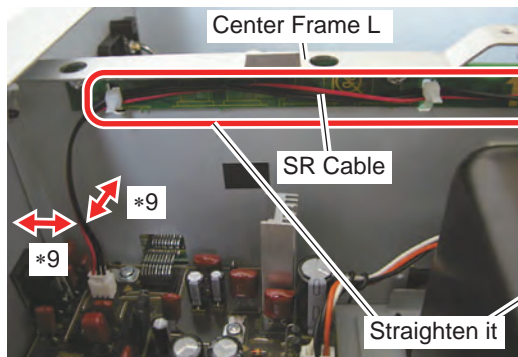
*7: Do not contact the Secondary Side Cable with metal. Do not contact it with the case of Power Trans (Pri), Bottom Chassis and Heat Sink, using the PCB Binder.

*8: Twist the Secondary Side Cable three times.



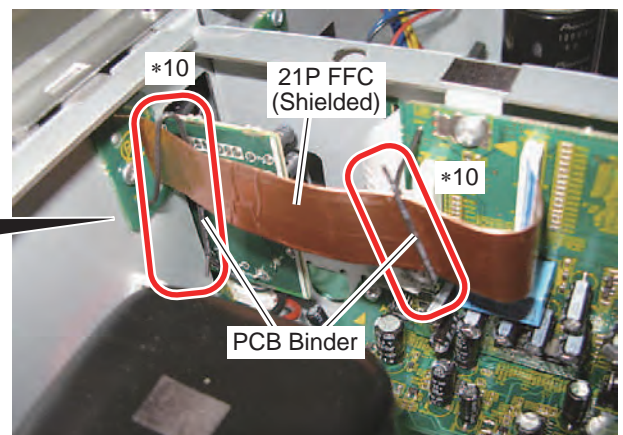
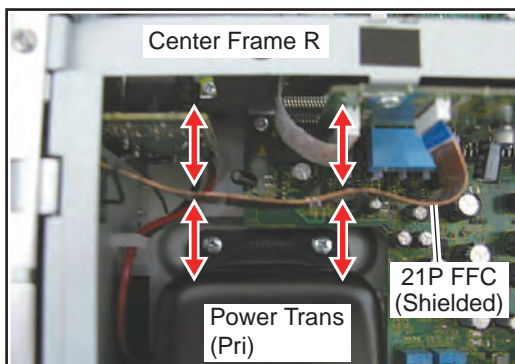
(3) SR Cable

*9: Do not contact the SR Cable coming from the FRONT ASSY with metal and the Secondary Side Cable of Power Trans (Main).



(4) 21P FFC (Shielded)

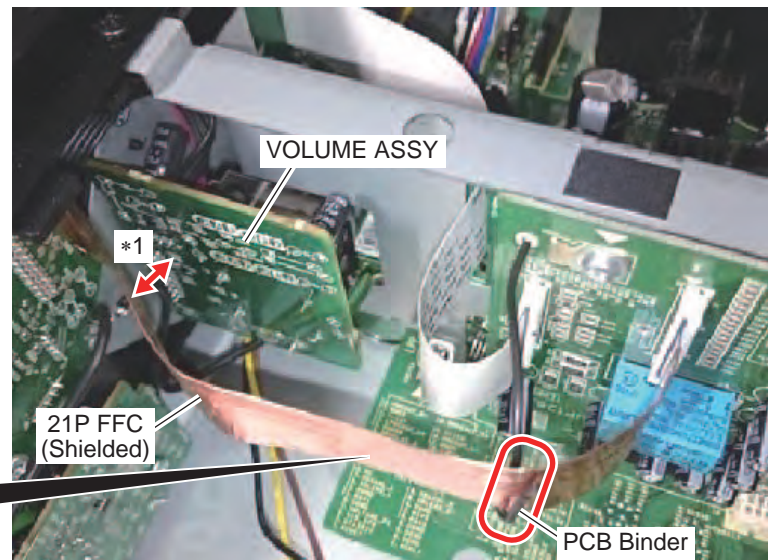
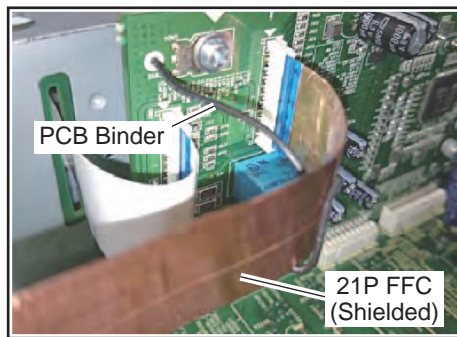
*10: Do not connect the 21P FFC (Shielded) with the case of Power Trans (Pri) and Center Frame R, using the two PCB Binders.



[4-1-3] Case of A-50DA-K, A-50DA-S

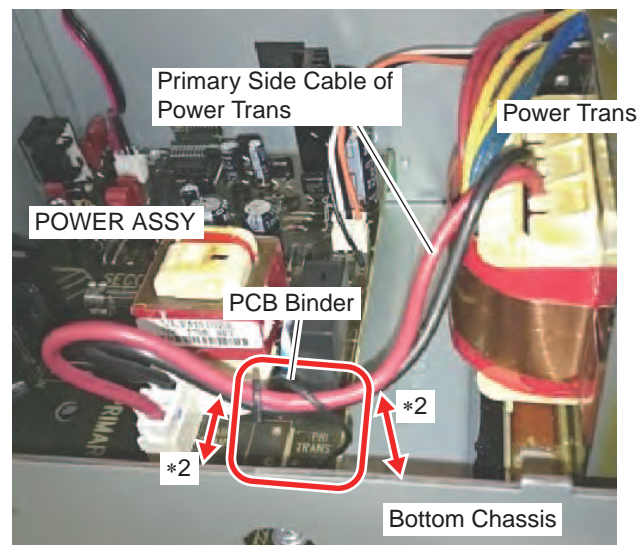
(1) 21P FFC (Shielded)

- *1: Do not connect the 21P FFC (Shielded) with the side-B of VOLUME ASSY, using the PCB Binder.



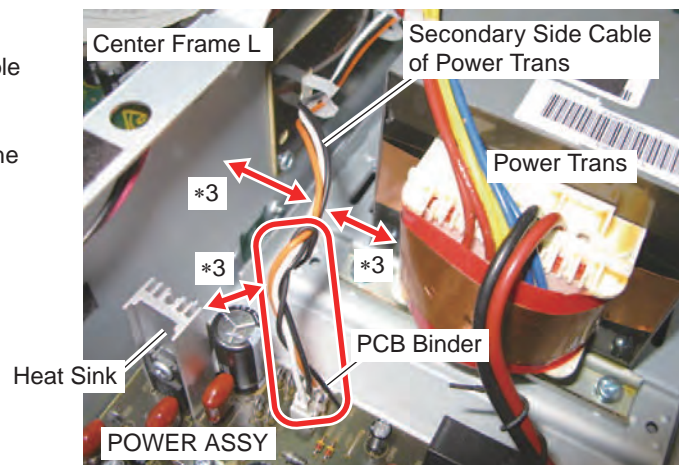
(2) Primary Side Cable of the Power Trans

- *2: Do not contact the Primary Side Cable with metal.
Do not contact it with the Bottom Chassis, using the PCB Binder.



(3) Secondary Side Cable of the Power Trans

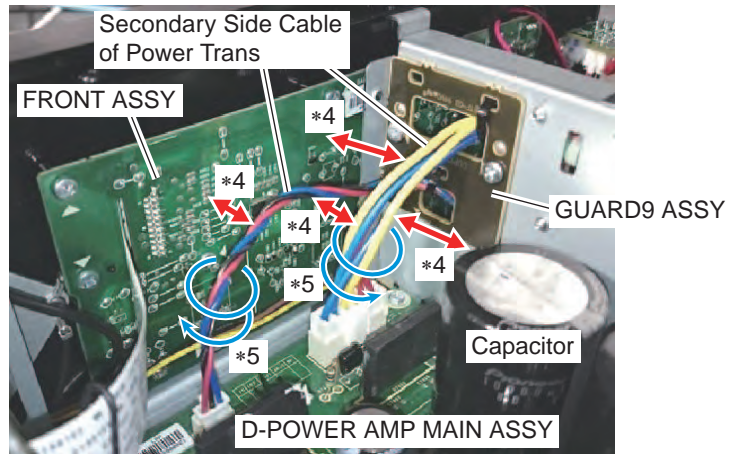
- *3: Do not contact the Secondary Side Cable with metal.
Do not contact it with the Power Trans, Center Frame L and Heat Sink, using the PCB Binder.



*4: Make styling Secondary Side Cables as shown in the photo.

Does not contact them with the FRONT ASSY, Capacitor and other cables.

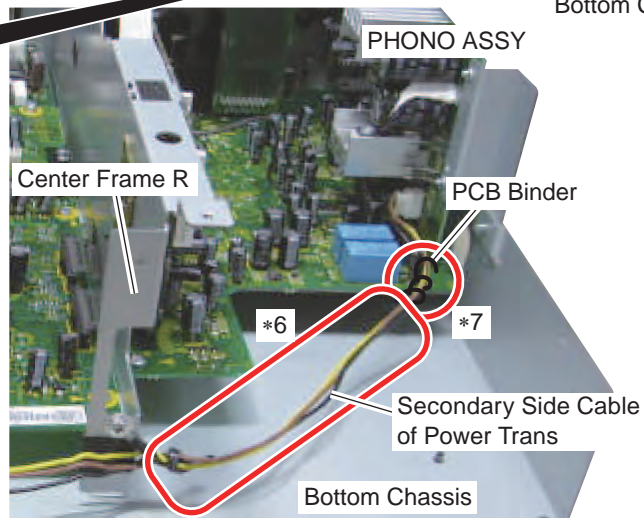
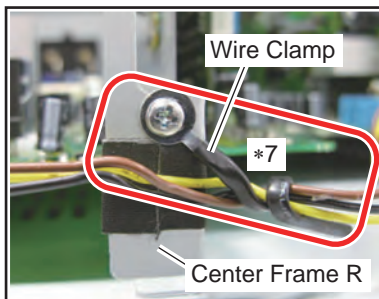
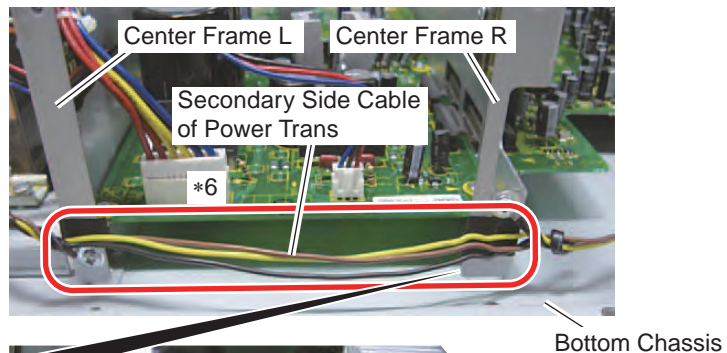
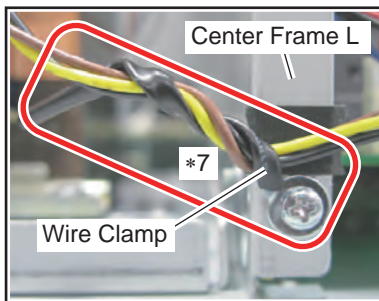
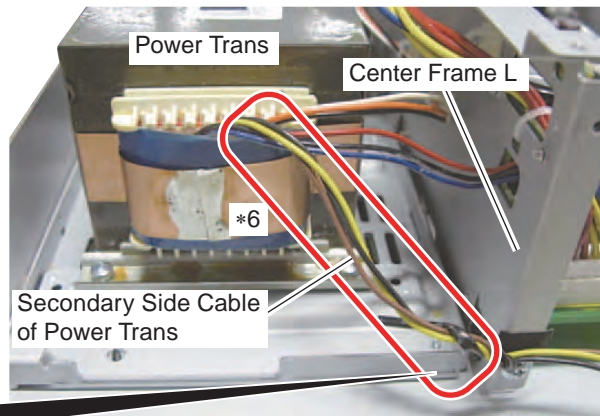
*5: Twist the Secondary Side Cables two times.



*6: Do not strain Secondary Side Cable excessively, but warp it slightly.

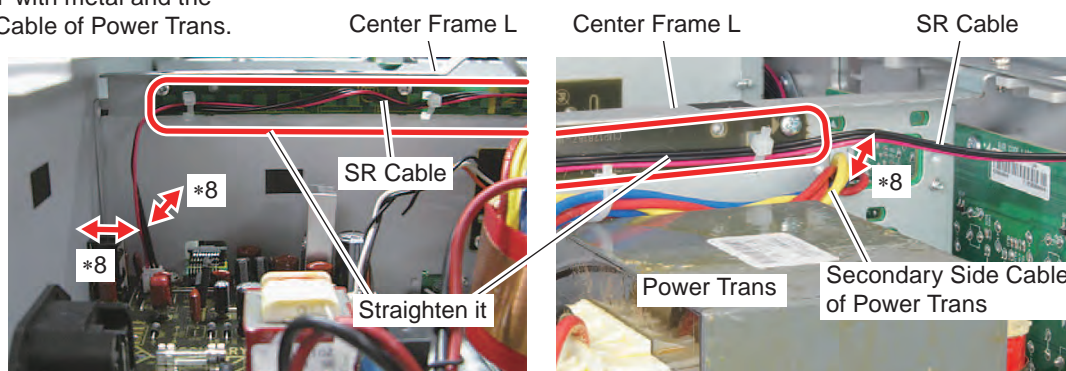
*7: Do not contact the Secondary Side Cable with metal.

Do not contact it with the Center Frame L, Center Frame R, Bottom Chassis and screws, using the Wire Clamp and PCB Binder.



(4) SR Cable

- *8: Do not contact the SR Cable coming from the FRONT ASSY with metal and the Secondary Side Cable of Power Trans.



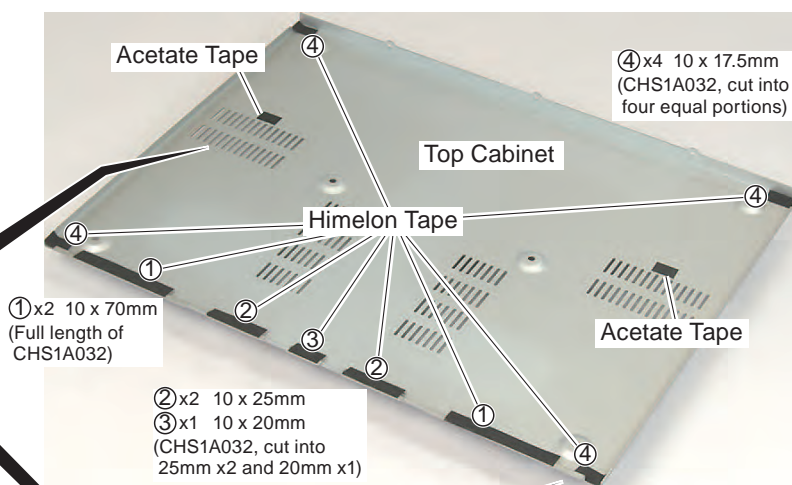
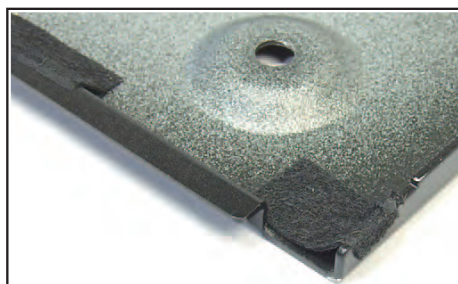
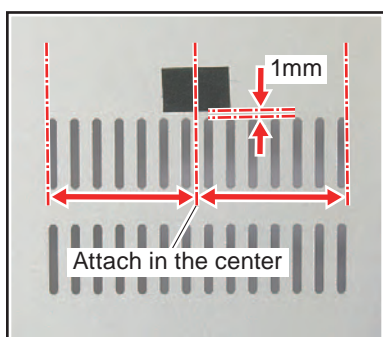
[4-2] Where to attach the sound quality improvement tape

Acetate Tape or Himelon Tape is attached to some parts in this model to improve sound quality. When the following components are replaced, be sure to attach the Tape again to the designated location. Concerning the Tape, if it is difficult to reuse the Tape, order a new Tape and attach it. (You can use other Tape than that designated by cutting it to a designated size.)

(1) Top Cabinet

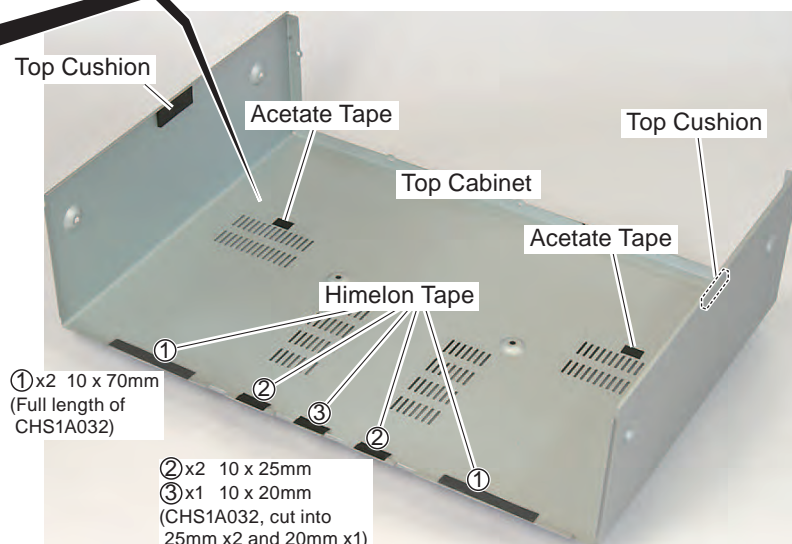
- *1: [Case of A-70DA-K, A-70DA-S]

Attach the four pieces of Himelon Tape (Part No.: CHS1A032, 10 x 70mm, cut two pieces into discribed sizes), two pieces of Acetate Tape (Part No.: CHS1A217, 10 x 15mm) to the Top Cabinet as shown in the photo.



- *2: [Case of A-50DA-K, A-50DA-S]

Attach the three pieces of Himelon Tape (Part No.: CHS1A032, 10 x 70mm, cut one piece into discribed size), two pieces of Acetate Tape (Part No.: CHS1A217, 10 x 15mm) and two Top Cushions to the Top Cabinet as shown in the photo.



(2) VOLUME ASSY

*1: Attach a piece of Acetate Tape (Part No.: CHS1A217, 10 x 15mm) to the specified position on the lateral side of Electric Volume as shown in the photo.

*2: [A-70DA-K, A-70DA-S only]

Attach a piece of Acetate Tape (Part No.: CHS1A217, 10 x 15mm) to the almost center of square shape.

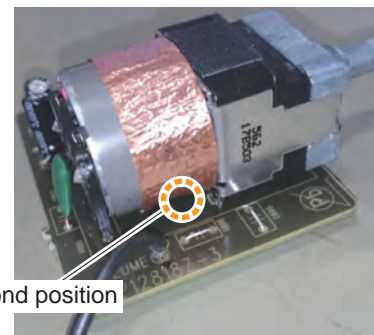
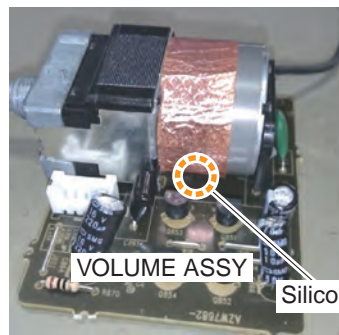
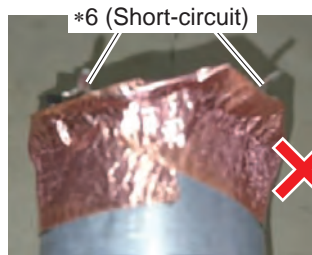
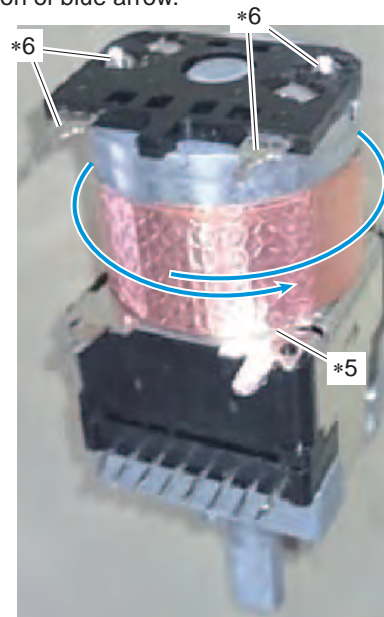
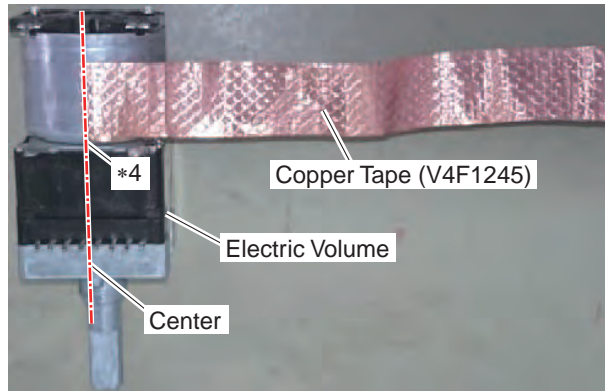
*3: [A-70DA-K, A-70DA-S only]

Attach a piece of Copper Tape (Part No.: V4F1245, 13 x 90mm) to the Electric Volume according to the following procedure.

<1> From position *4 of Electric Volume, attach the Copper Tape to the direction of blue arrow.

Notes

- The axis surface when you attach the Tape is position *5.
- When you attach the Tape, you shall not touch the Tape to position *6.
- When Tape touches with position *6, it is short-circuit.



<2> Fix the Copper Tape and VOLUME ASSY, using the Silicon Bond (GYA1011) (Two places).

When V4F1245 is not available:



<Specification of Copper Tape used for V4F1245>

SUMITOMO 3M Copper Tape with emboss type, model No.1245 or equivalent.

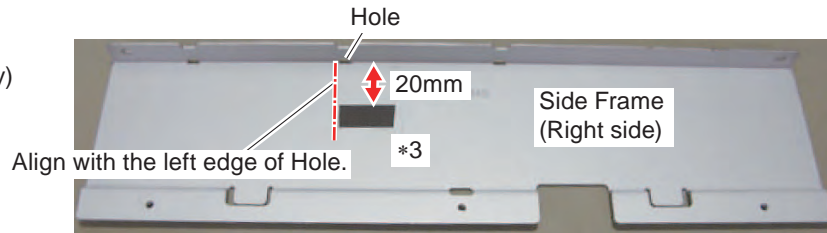
*If it is the Copper Tape which is same to No. 1245 (shielding performance), can use the equivalent local Copper Tape.

Refer to the following URL.

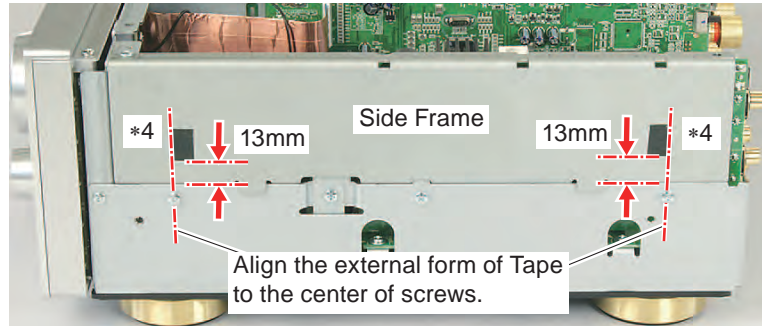
http://www.mmm.co.jp/electrical/emc/basis/copper/index_emb.html

Cut the Tape into 90 mm piece, and use the piece in exchange for V4F1245.

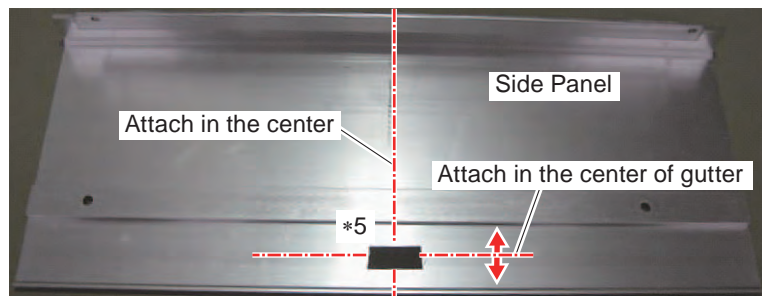
- *3: Attach a piece of Acetate Tape (Part No.: CHS1A217, 10 x 15mm) to the inner side of Side Flame (Right side only) as shown in the photo. (Tape is unnecessary for the left side.)



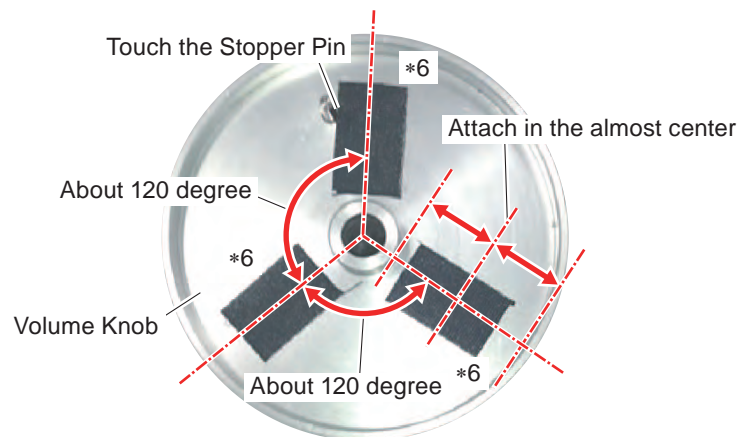
- *4: Attach the two pieces of Acetate Tape (Part No.: CHS1A217, 10 x 15mm) to the out side of each Side Flames (left and right) as shown in the photo.



- *5: Attach a piece of Acetate Tape (Part No.: CHS1A217, 10 x 15mm) to the inner side of each Side Panels (left and right) as shown in the photo.



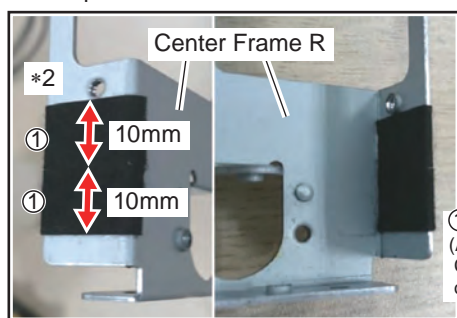
- *6: Attach the three pieces of Acetate Tape (Part No.: CHS1A217, 10 x 15mm) to the inner side of Volume Knob as shown in the photo.



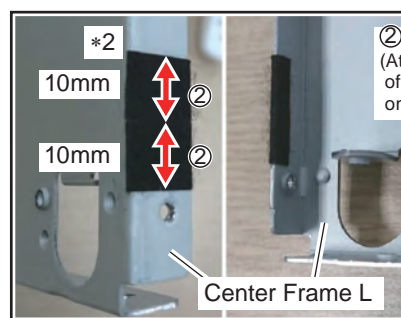
(4) Acetate Tape, Himelon Tape [Case of A-50DA-K, A-50DA-S]

*1: Attach the ten pieces of Acetate Tape (Part No.: CHS1A217, 10 x 15mm) as shown in the photo.

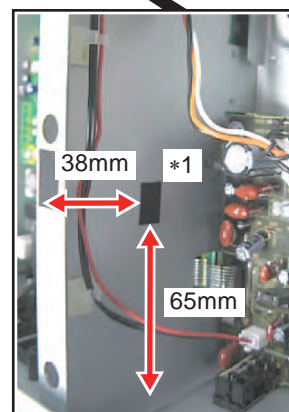
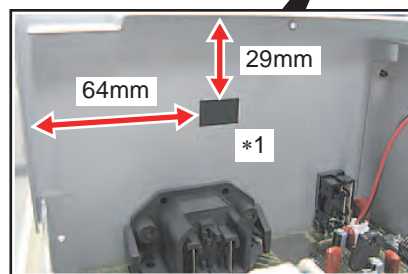
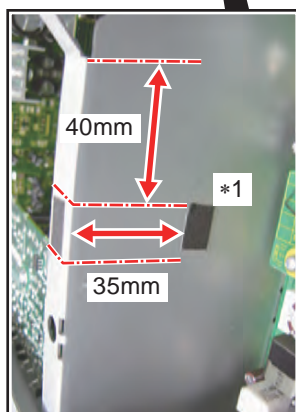
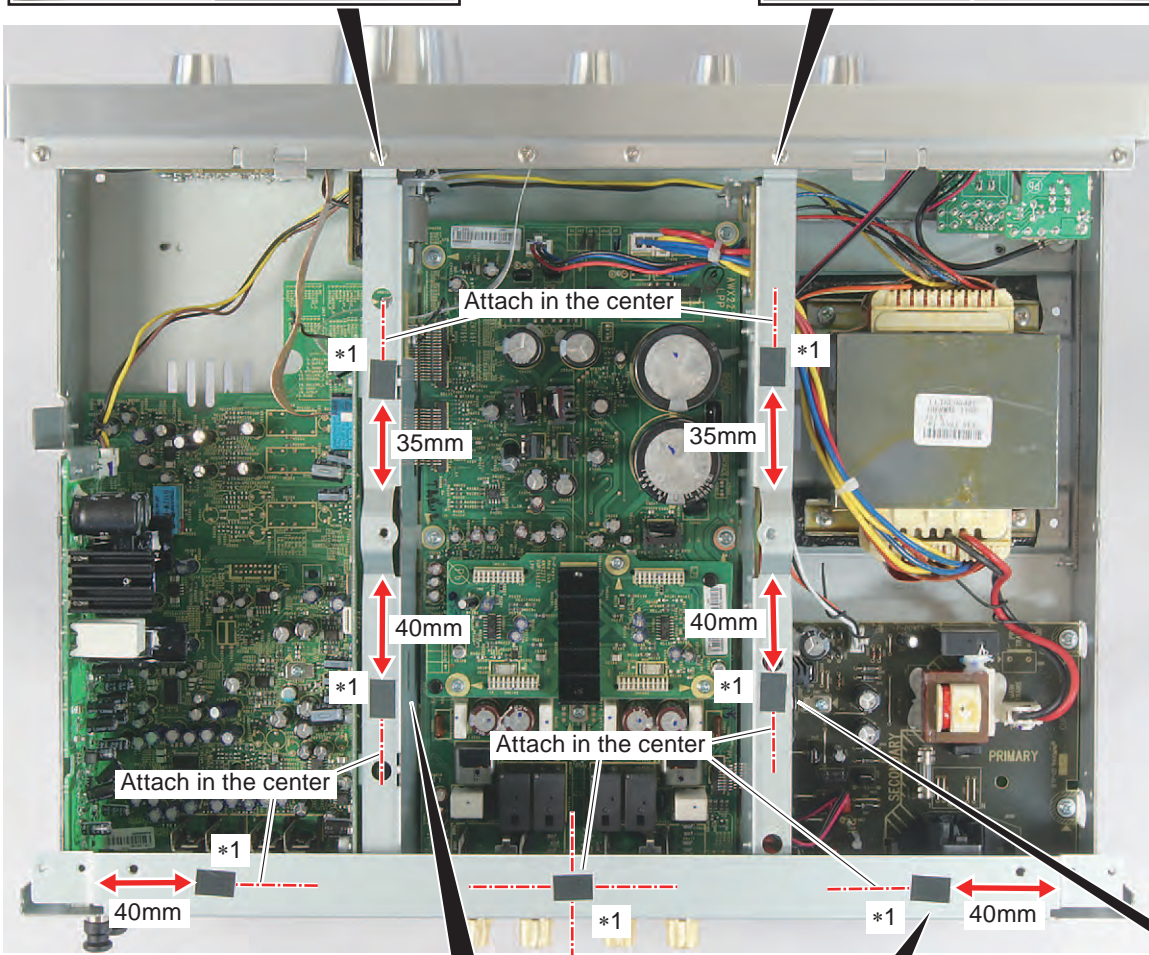
*2: Attach the two pieces of Himelon Tape (Part No.: CHS1A032, 10 x 70mm, cut into discribed sizes) as shown in the photo.



① x2 10 x 35mm
(Attach the two halves of CHS1A032 in two rows on the Center Frame R.)

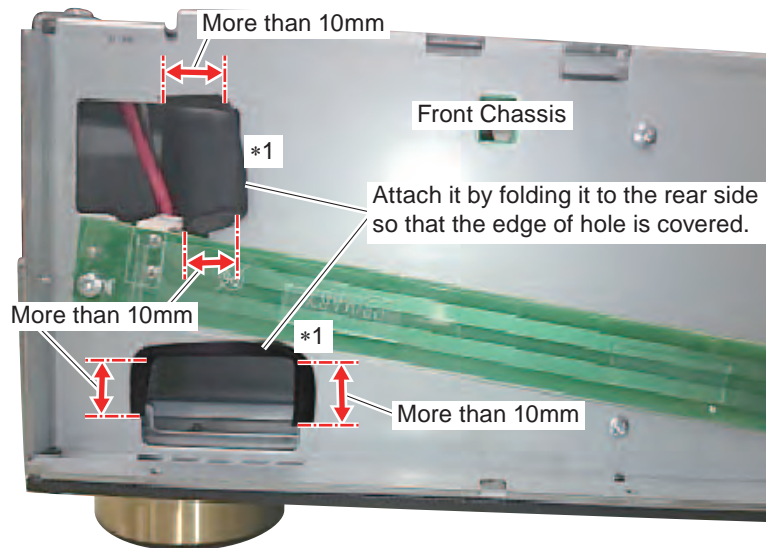


② x2 10 x 17.5mm
(Attach the two quarters of CHS1A032 in two rows on the Center Frame L.)



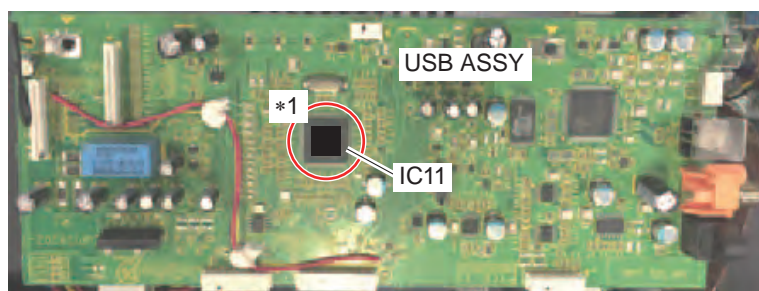
(5) Himelon Tape (A-70DA-K, A-70DA-S only)

*1: Attach the two pieces of Himelon Tape (Part No.: CHS1A032, 70 x 10mm) as shown in the photo.



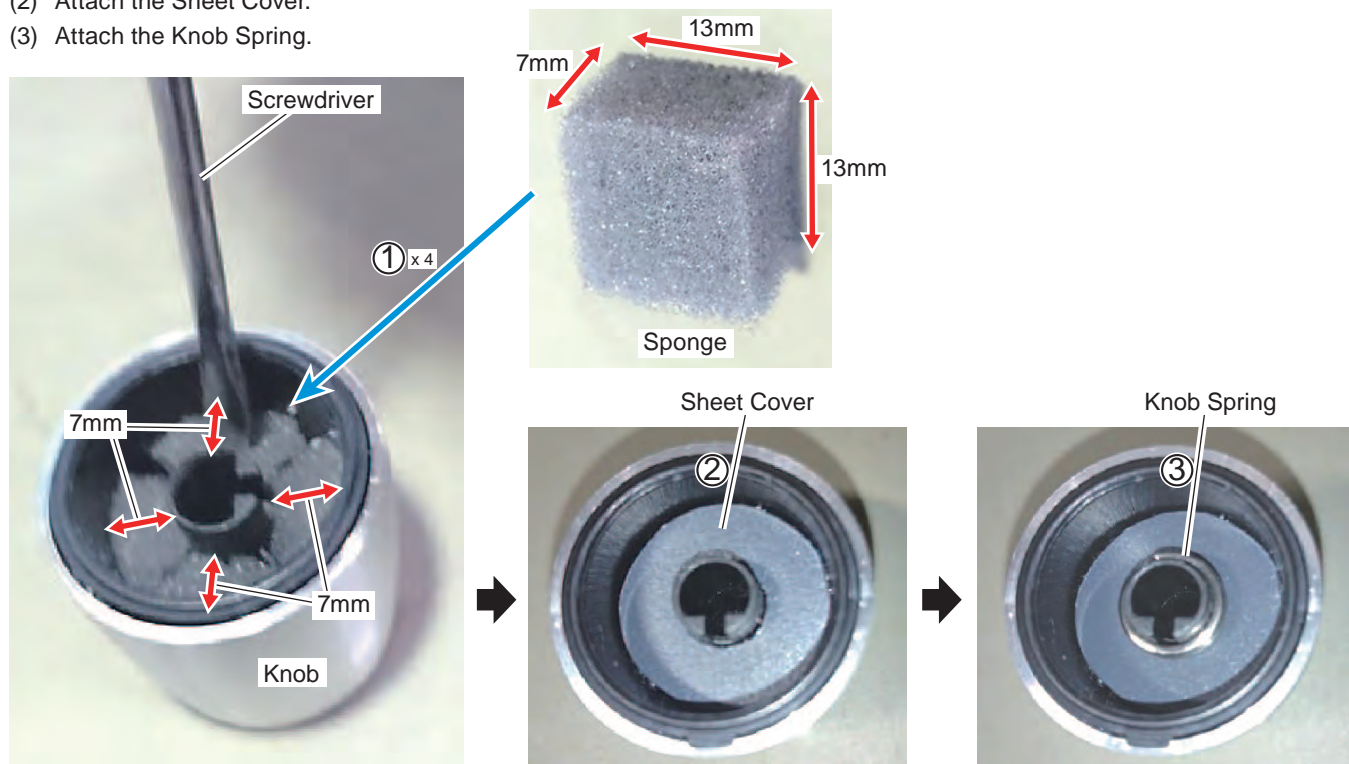
(6) Acetate Tape

*1: Attach a piece of Acetate Tape (Part No.: CHS1A217, 10 x 15mm, cut into 10 x 10mm) as shown in the photo.



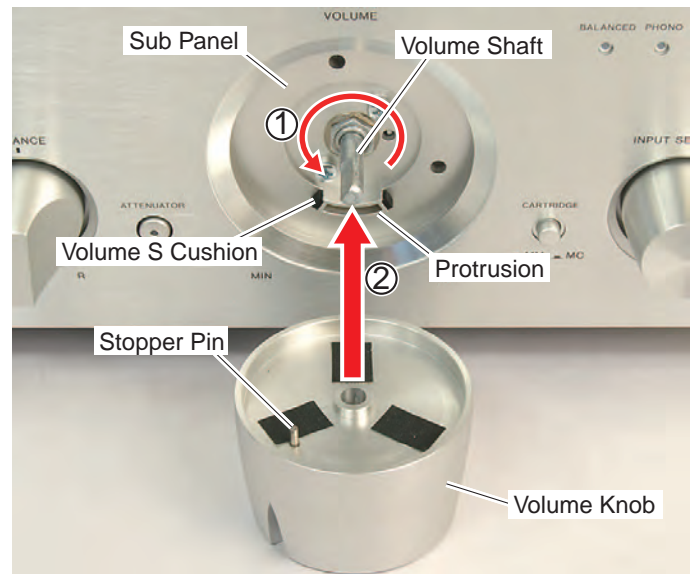
[4-3] Attach the Sponges and Sheet Cover to the Input Knob and three Tone Knobs

- (1) Insert the four Sponges into the Knob as shown in the photo, using the flat tip screwdriver.
- (2) Attach the Sheet Cover.
- (3) Attach the Knob Spring.



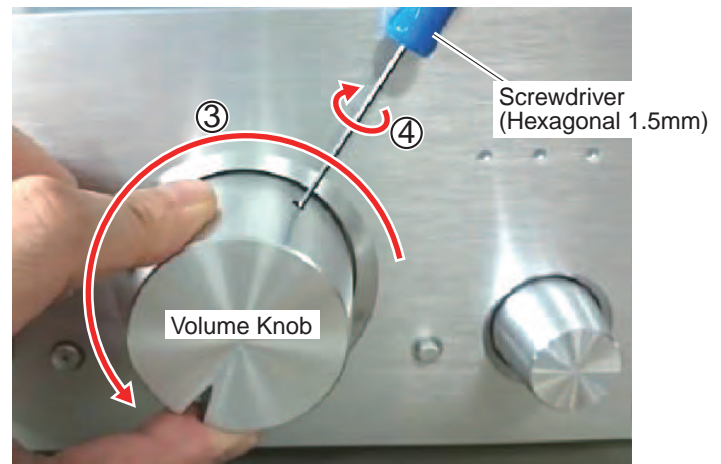
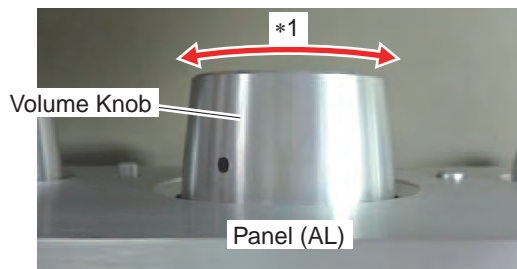
[4-4] Attach the Volume Knob (Case of A-70DA-K, A-70DA-S)

- (1) Rotate the Volume Shift to MIN side fully.
- (2) Attach the Volume Knob to the Volume Shaft at the position where the Stopper Pin of Volume Knob does not enter the protrusion of Sub Panel.

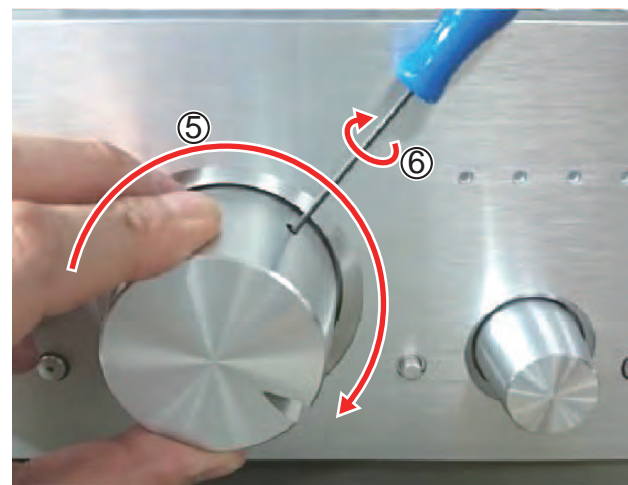


- (3) Rotate the Volume Knob to MIN side fully. (Stopper Pin contacts the Volume S Cushion.)
- (4) Press the Volume Knob against MIN side softly and tighten the first Volume Screw using the screwdriver (hexagonal 1.5mm) securely (8kgf • cm).

*1: When you tighten the Volume Screw, pay attention to the Volume Knob so that it does not tilt against the Panel (AL).

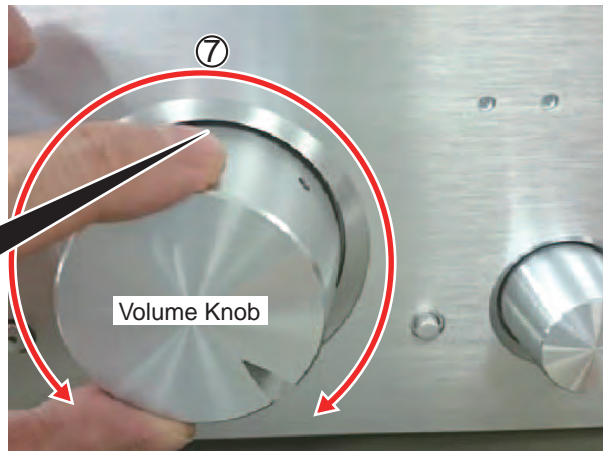
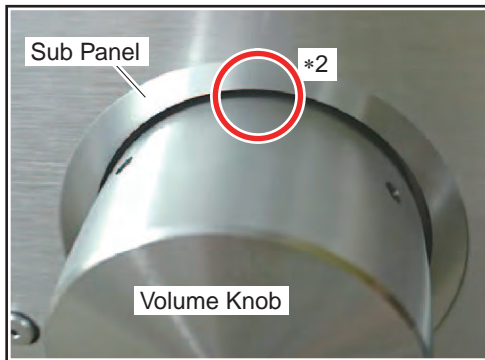


- (5) Rotate the Volume Knob to MAX side so that the hole of second Volume Screw fits the position of screwdriver that has secured the first Volume Screw.
- (6) Tighten the second Volume Screw using the screwdriver (hexagonal 1.5mm) securely (8kgf • cm).



- (7) Check the Volume Knob does not tilt against the Panel (AL) by rotating the Volume Knob to right and left.

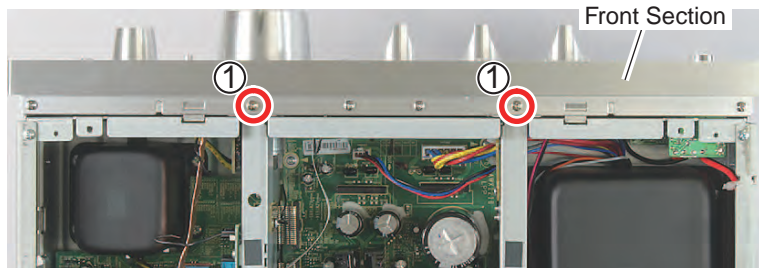
*2: Rotate the Volume Knob and check the gap from the Sub Panel does not change widely. If it changes widely, carry out the attachment again.



[4-5] Attach the Side Panel, Top Cabinet (A-70DA-K, A-70DA-S only)

[4-5-1] Side Panel R, Side Panel L

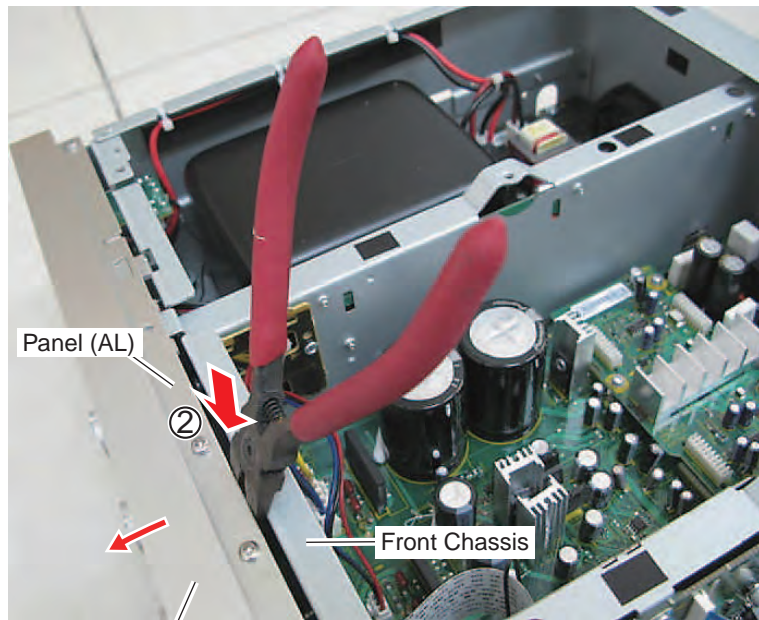
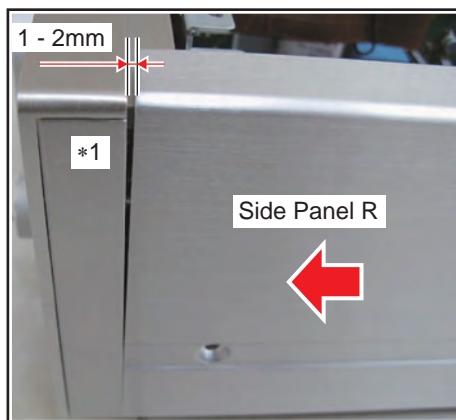
- (1) Remove the two screws.
(A-70DA-K: VTB3+8JFZR)
(A-70DA-S: VTB3+8JFC)



• Top view

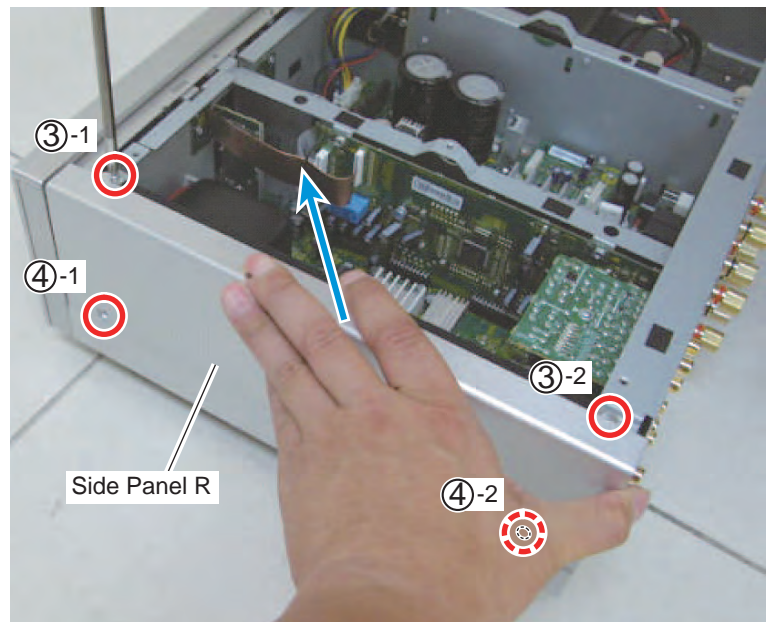
- (2) Insert the thick tool (nipper or scissors etc.) in the gap between the Panel (AL) and Front Chassis and tilt the Front Section to front side.

*1: Set the Side Panel and press it against the Front Section so that the upper side opens by 1 to 2mm.

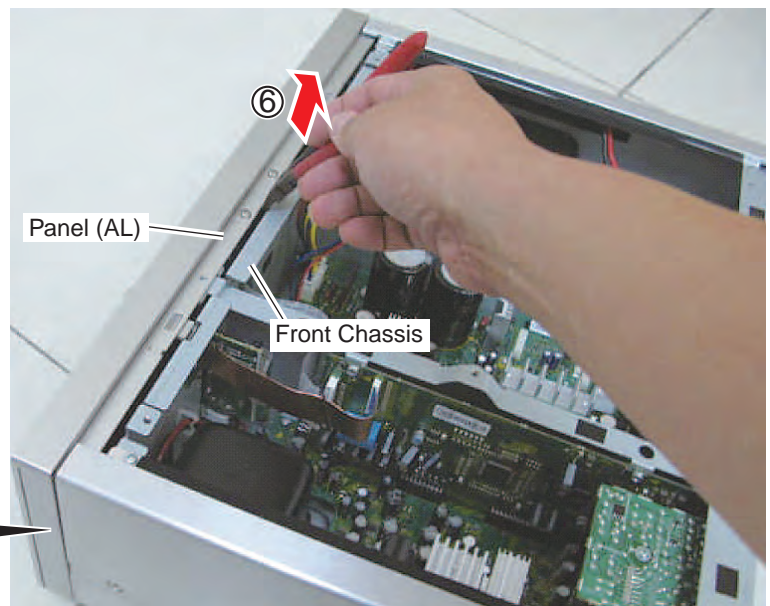
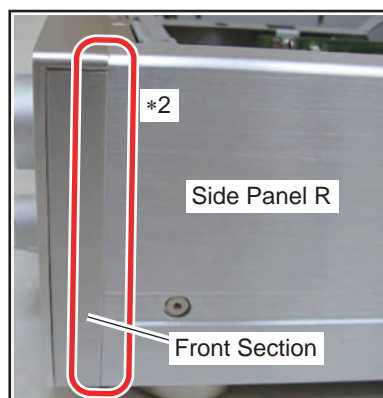


Front Section

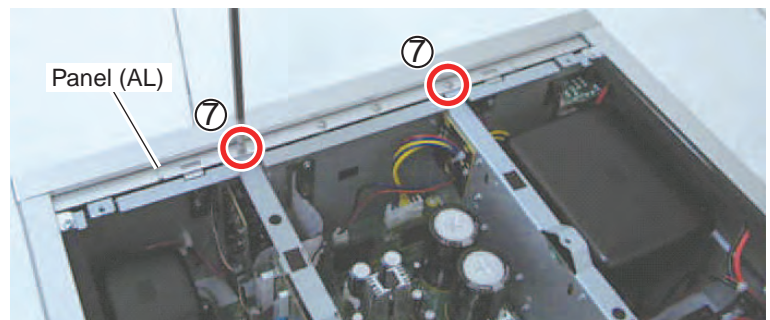
- (3) While pressing the Side Panel against the direction indicated by blue arrow, tighten the two screws in order of ③-1 and ③-2. (VTB3+6JR)
- (4) Tighten the two screws in order of ④-1 and ④-2.
(A-70DA-K: CHD1A080FFZRP)
(A-70DA-S: CHD1A080FFCP)
- (5) Attach the Side Panel on the opposite side following the steps (3) and (4).



- (6) Pull out the tool inserted in the gap between the Panel (AL) and Front Chassis.
*2: Check there is no gap between the Front Section and Side Panel.



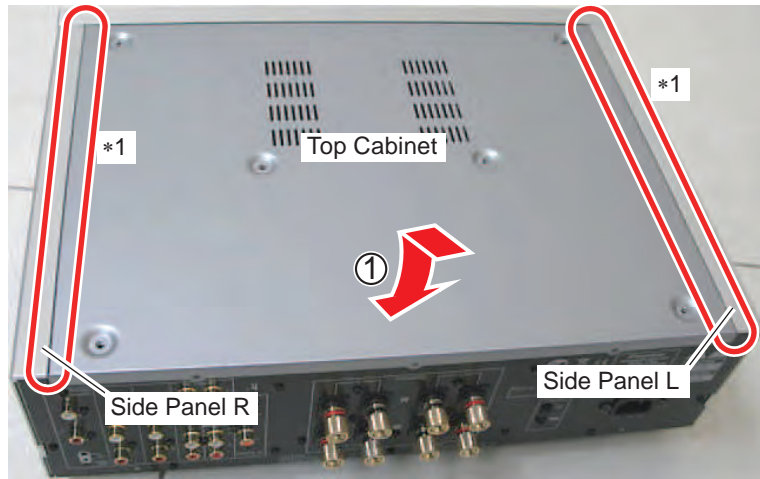
- (7) Attach the two screws.
(A-70DA-K: VTB3+8JFZR)
(A-70DA-S: VTB3+8JFC)



[4-5-2] Top Cabinet

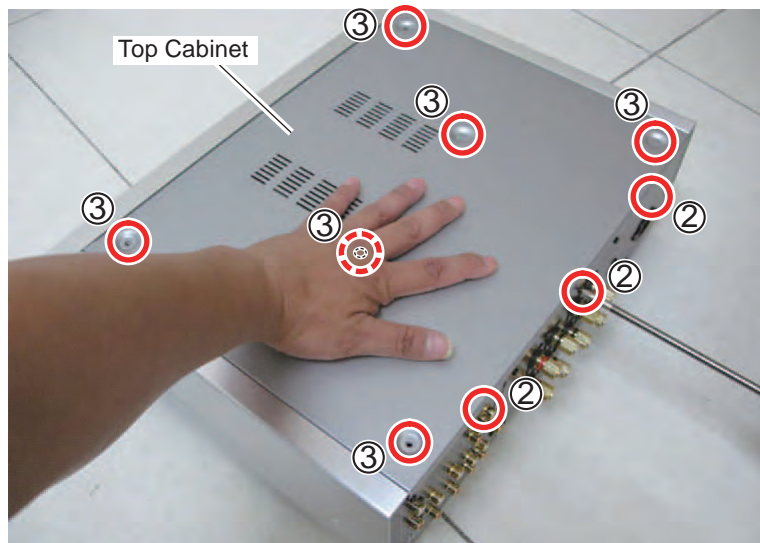
(1) Allocate the Top Cabinet.

- *1: Check there is no variability in the gap between the Side Panel and Top Cabinet. If there is variability or Top Cabinet cannot be attached, adjust the attachment of Side Panel.



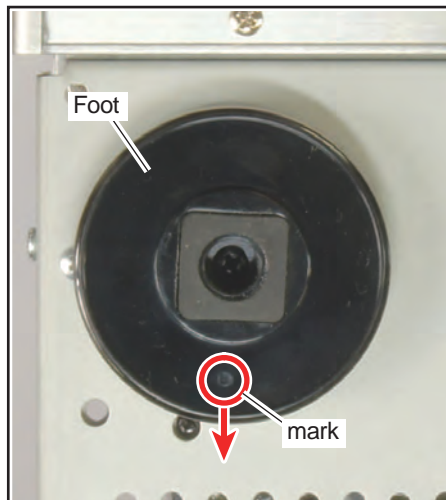
(2) While pressing the Top Cabinet softly from above side so that it does not float, tighten the three screws on rear side.
(VTB3+6JFZR)

(3) Tighten the six screws.
(A-70DA-K: CHD1A080FFZRP)
(A-70DA-S: CHD1A080FFCP)

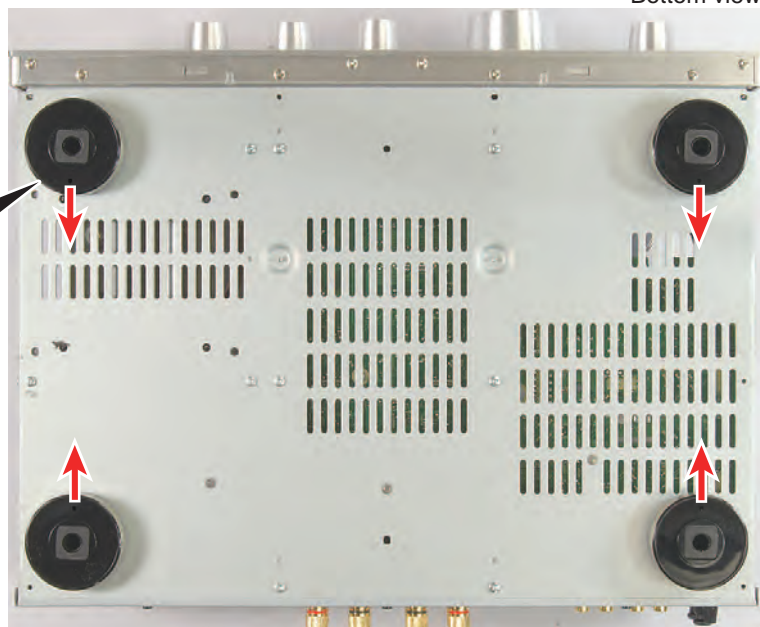


[4-6] Direction of Foot

(1) Align the mark at under surface of the Foot with the direction of photo.



• Bottom view



5678

8. EACH SETTING AND ADJUSTMENT

8.1 HOW TO CHECK THE FIRMWARE VERSION

1. In STANDBY status, press Front Key [POWER AMP DIRECT] and [SPEAKER A] at the same time (5 seconds).
At this time, the version can be checked with the indicator.

	RESERVE	Major Version				Minor1				Minor2
		PURE D	SPK A	SPK B	LOUD	PHONO SACD	NET A	LINE1	LINE2	
A-50DA	PURE D									P-AMP D
A-70A	PURE D									
A-70DA	PURE D									P-AMP D
	0									0
	1									1
										2
										3
										4
										5
EX1)										2
EX2)										3

Version : 4.2.0
Version : 5.3.1

- * If firmware version has to be bigger than 7.5.1, we are going to use PURE D LED.
2. If the power supply is turned ON in this status, the product is reset to the factory-shipping status.

■ Factory-shipping status

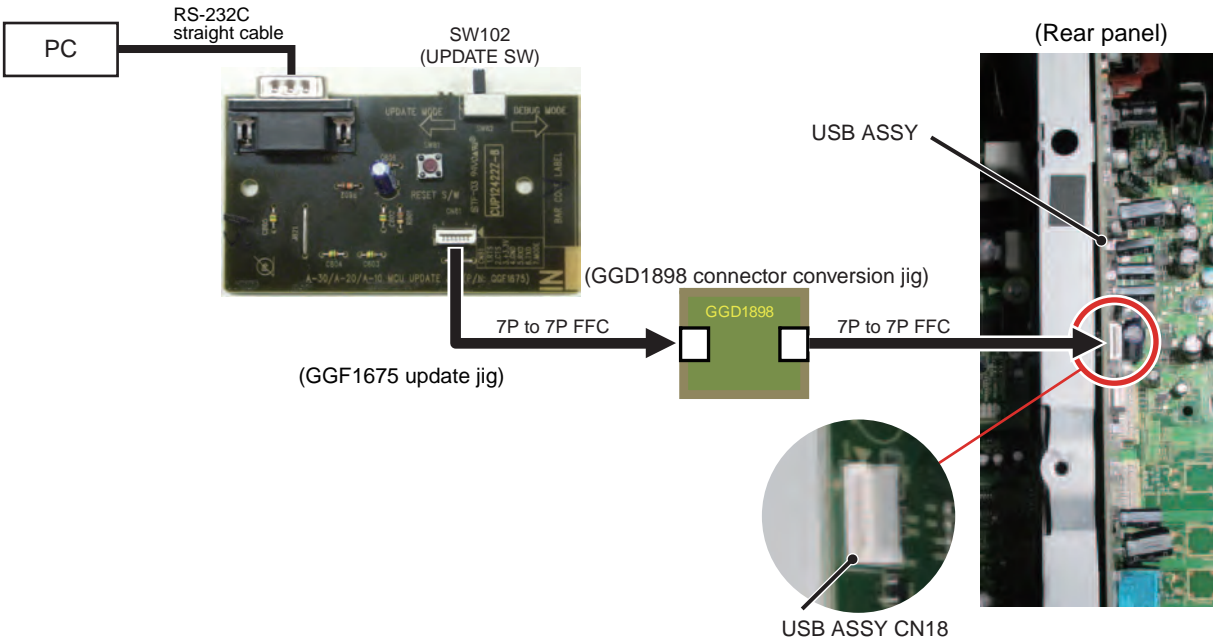
- | | |
|-------------------|-------------------------------|
| 1 MUTE | OFF |
| 2 INPUT | SACD/CD |
| 3 DIRECT | ON |
| 4 DIMMER | OFF (MAX) |
| 5 P AMP DIRECT | OFF |
| 6 Auto Power Down | OFF |
| 7 SPEAKER A | ON |
| 8 SPEAKER B | OFF |
| 9 LOUDNESS | OFF |
| 10 ATTENUATOR | OFF (A-70DA-K, A-70DA-S only) |

8.2 FIRMWARE UPDATING

[Necessary Tool]

- Firmware
- PC with a serial port (For PC without a serial port, a commercially-available USB serial conversion cable is also available)
- RS-232C cable (9-pin to 9-pin, straight cable)
- RS-232C update jig: GGF1675 (Use included FFC (7-pin to 7-pin))
- Connector conversion jig: GGD1898

[Connection Diagram]



[Update Procedure]

1. Unplug the AC Cord and remove the Top Cabinet, then connect UPDATE JIG(GGF1675) and CONNECTOR CONVERSION JIG(GGD1898) to PC and A-70DA/A-50DA.

USB ASSY CN18 ⇔ CONNECTOR CONVERSION JIG (GGD1898) ⇔ UPDATE JIG CN101
PC (RS-232C connector) ⇔ UPDATE JIG JK101

2. Switching the SW102(UPDATE JIG) on UPDATE JIG to DEBUG MODE side and plug in the AC Cord.
3. A-70DA/A-50DA is standby mode. Standby LED is turned ON.
4. Press Front Key [POWER AMP DIRECT] and [SPEAKER A] at the same time (5 seconds) to reset to the factory-shipping status and then the firmware version is displayed.

5. Prepare update application and update file.

It is necessary to store 3 files in the same folder of PC.

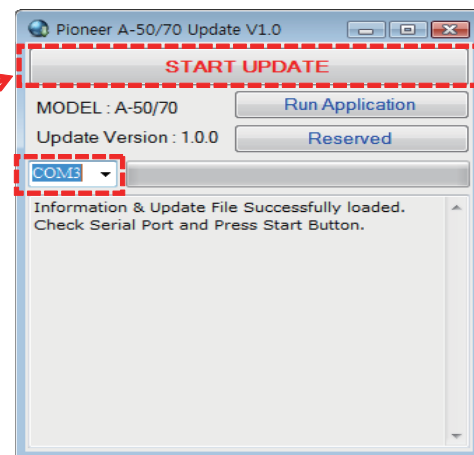
- a. PioneerAxxUpdate.ini : Update Information File
- b. UpdateAppPioneerA70DA_1v0.exe : Windows Update Application File
- c. PIONEER_A70DA_1v00.BIN : Update Binary File

6. Double-click UpdateAppPioneerA70DA_1v0.exe and start up the update application.

7. Select the serial port you connected and click "START UPDATE" button.
(At this time, the front LED enters in Debug Mode (Updating) status)

*** If the update cannot be executed because of "Connection Error" message, connect RS-232C cable again and carry out the operation from the beginning.**

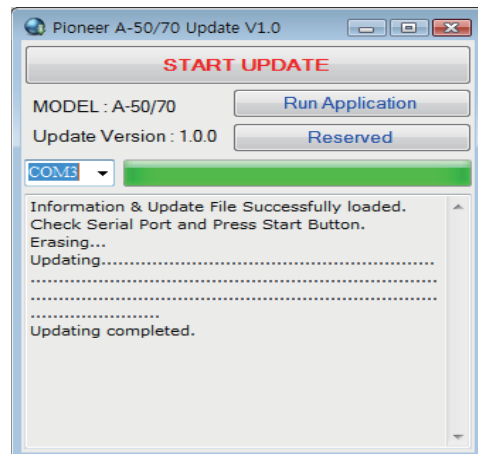
Click



8. If "Updating completed" is displayed, the front LED enters in Debug Mode (Completed).

9. Quit the update application and disconnect the AC Cord.

10. Disconnect UPDATE JIG and assembling the Top Cabinet.



LED display at update

Debug Mode (Updating)	Power LED	On	On
	Standby LED	Off	On
Debug Mode (Completed)	Power LED	On	On
	Standby LED	Off	On

■

5

■

6

■

7

■

8

■

A

■

B

■

C

■

D

■

E

■

F

■

5

■

6

■

7

■

8

■

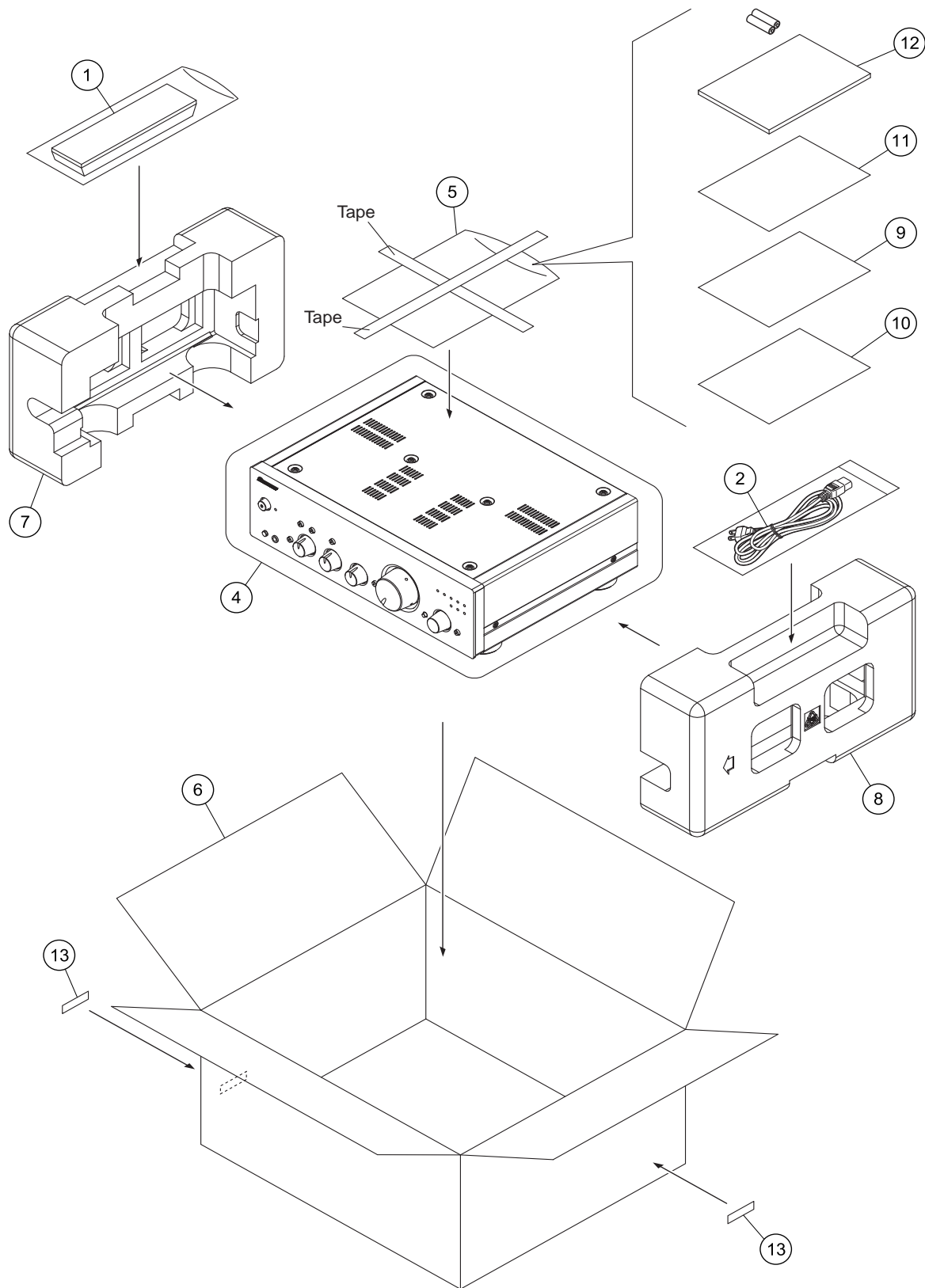
A-70DA-K

1234

9. EXPLODED VIEWS AND PARTS LIST

NOTES: ● Parts marked by “NSP” are generally unavailable because they are not in our Master Spare Parts List.
● The ⚠ mark found on some component parts indicates the importance of the safety factor of the part.
Therefore, when replacing, be sure to use parts of identical designation.

9.1 PACKING SECTION



(1) PACKING SECTION PARTS LIST

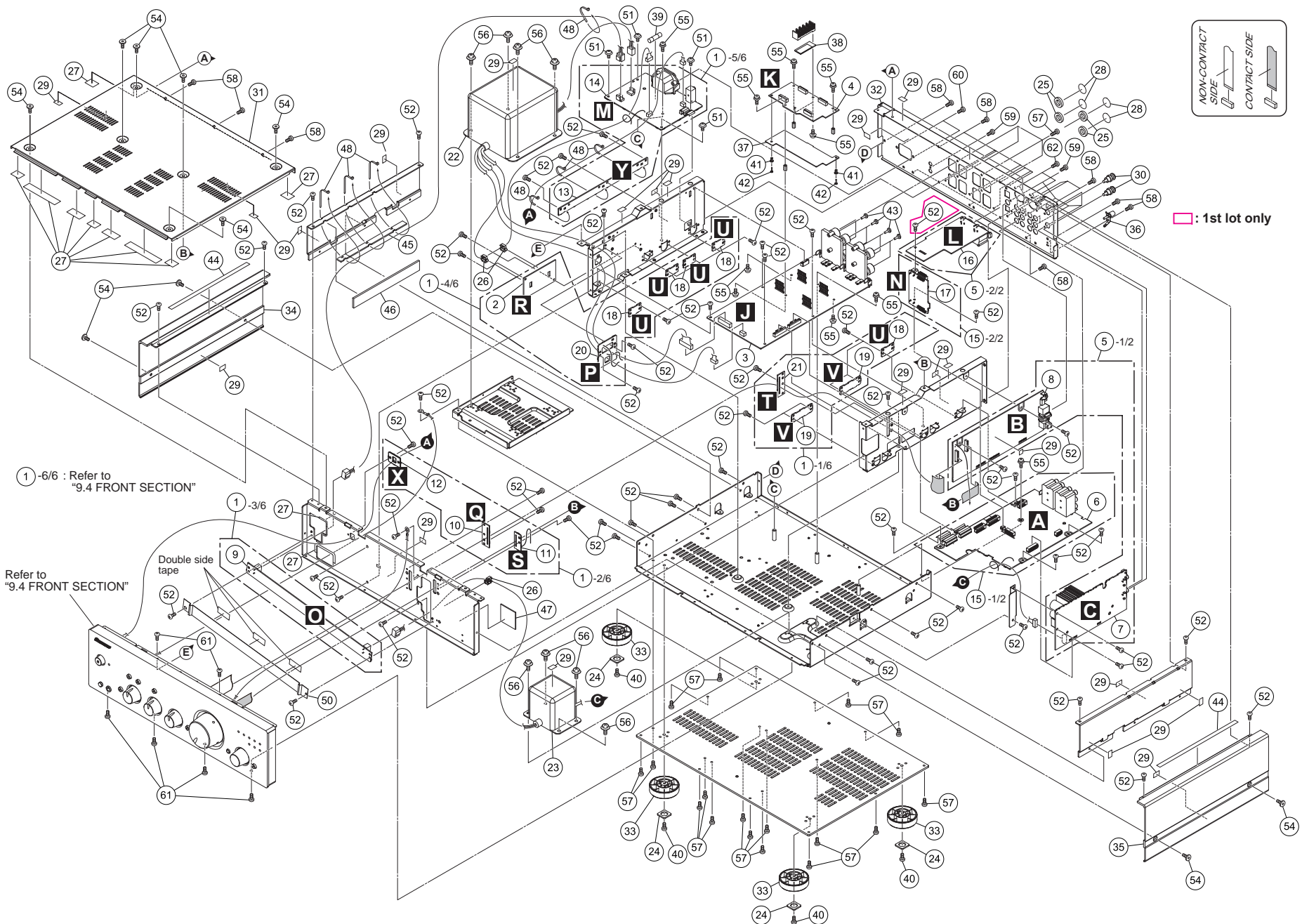
Mark	No.	Description	Part No.
	1	Remote Control Unit	CARTA70DA
⚠	2	AC Power Cord	CJA2B135ZV
	3	•••••	
	4	Polyethylene Bag	VPB1A013W
NSP	5	Polyethylene Bag	•••••
	6	Packing Case	See Contrast table (2)
	7	Packing Pad L	See Contrast table (2)
	8	Packing Pad R	See Contrast table (2)
	9	Speaker Sheet	VQE1A814Z
	10	Caution Sheet	VQE1A816Z
NSP	11	Warranty Card	•••••
	12	Operating Instructions	VQX1A1939Z
	13	Serial Label	•••••

(2) CONTRAST TABLE

A-70DA-K/SYXEV8, A-70DA-S/SYXEV8, A-50DA-K/SYXEV8 and A-50DA-S/SYXEV8 are constructed the same except for the following:

Mark	No.	Symbol and Description	A-70DA-K/SYXEV8	A-70DA-S/SYXEV8	A-50DA-K/SYXEV8	A-50DA-S/SYXEV8
	6	Packing Case	VPG1A1079Z	VPG1A1079Y	VPG1A1078Z	VPG1A1078Y
	7	Packing Pad L	VPS1A1056	VPS1A1056	VPS1A1054	VPS1A1054
	8	Packing Pad R	VPS1A1057	VPS1A1057	VPS1A1055	VPS1A1055

9.2 EXTERIOR SECTION (A-70DA-K, A-70DA-S)



(1) EXTERIOR SECTION PARTS LIST (A-70DA-K, A-70DA-S)

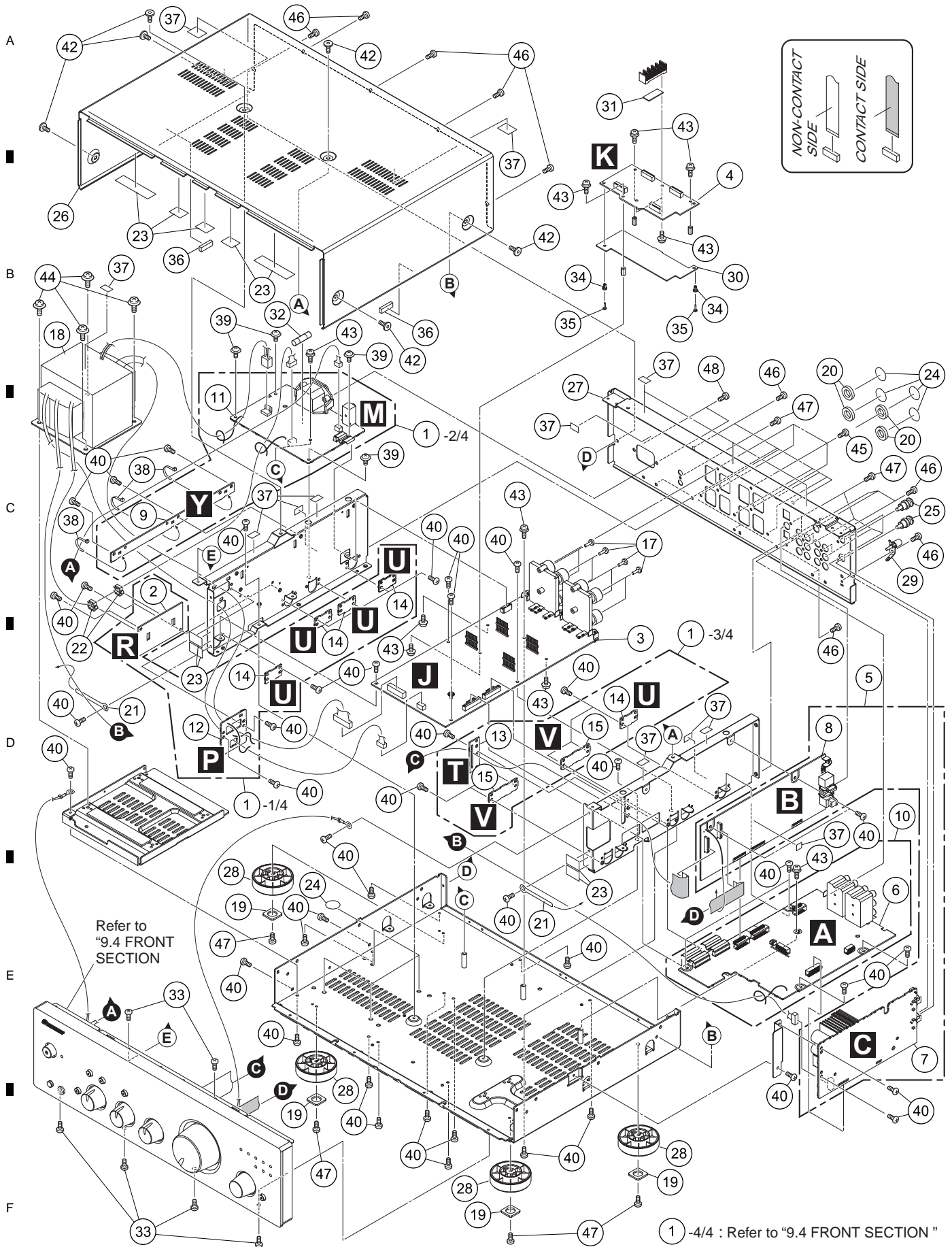
Mark	No.	Description	Part No.	Mark	No.	Description	Part No.	
	1	FRONT ASSY	COP12818B	31	Top Cabinet		See Contrast table (2)	
NSP	2	GUARD11 ASSY	•••••	32	Rear Panel		See Contrast table (2)	A
	3	D-POWER AMP MAIN ASSY	VUP12821ZB	33	Foot		See Contrast table (2)	
	4	D-POWER AMP SUB ASSY	VUP12822Z	34	Side Panel L		See Contrast table (2)	
	5	MAIN ASSY	COP12820B	35	Side Panel R		See Contrast table (2)	
	6	INPUT ASSY	VUP12819Z-1B	36	Ground Terminal		CMA1A006	
	7	PHONO ASSY	CUP12820Z-2B	37	Insulator (PC,CU,PC)		CMX1A322	
	8	USB ASSY	CUP12820Z-1B	38	Heat Sink Sheet		CMZ1A143	
	9	AC LINE ASSY	CUP12818Z-8BCD	39	Fuse (F901: 250V/3.15A)		KBA2C3150TLEY	
	10	GUARD10 ASSY	CUP12818Z-10	40	Screw		VTB3+10JFZR	
	11	GUARD12 ASSY	CUP12818Z-12	41	Rivet Base		CRE1A114	B
NSP	12	GUARD17 ASSY	•••••	42	Rivet Pin		CRE1A115	
NSP	13	GUARD18 ASSY	•••••	43	Locker, Black		CRE1A037	
	14	POWER ASSY	CUP12818Z-7B	44	Acetate Tape		C4FS101BL	
	15	INPUT ASSY	COP12819B	45	Wire Cushion		CHG1A547	
	16	XLR ASSY	CUP12820Z-3B	46	Wire Cushion		CHG1A548	
	17	CONNECTOR ASSY	VUP12819Z-2BCD	47	Wire Cushion		CHG1A572	
NSP	18	GUARD14 ASSY	•••••	48	Clamper		CHR301-V1	
NSP	19	GUARD15 ASSY	•••••	49	•••••			
	20	GUARD9 ASSY	CUP12818Z-9	50	PCB Insulator		CMX1A313	C
	21	GUARD13 ASSY	CUP12818Z-13	51	Screw		VTW3+6JR	
⚠	22	Power Trans (Main)	VLT5U053ZE	52	Screw		VTB3+6JR	
⚠	23	Power Trans (Pri)	VLT5M041ZE	53	•••••			
	24	Foot Cushion	CHG1A528	54	Special Screw		See Contrast table (2)	
	25	Screw Cushion	CHG1A576	55	Special Screw		CHD2A060R	
	26	Wire Clamp	CRE1A110	56	Trans Screw		CHD3A023R	
	27	Himelon Tape	CHS1A032	57	Screw		VTB3+10JFZR	
	28	Cover Sheet	CHS1A154	58	Screw		VTB3+6JFZR	
	29	Acetate Tape (10 x 15)	CHS1A217	59	Screw		VTB3+8JFZR	D
	30	Short Pin Plug (PHONO)	CJT1A100	60	Screw		CTB4+10GFZR	
				61	Screw		See Contrast table (2)	
				62	Screw		VTN3+6JFZR	

(2) CONTRAST TABLE

A-70DA-K/SYXEV8 and A-70DA-S/SYXEV8 are constructed the same except for the following:

Mark	No.	Symbol and Description	A-70DA-K/SYXEV8	A-70DA-S/SYXEV8
	31	Top Cabinet	CKC2A217B62	CKC2A217G70
	32	Rear Panel	CKF2A505Z	CKF2A505Y
	33	Foot	CKL1A204	CKL1A204H65
	34	Side Panel L	CKM1A252C79	CKM1A252C80
	35	Side Panel R	CKM1A253C79	CKM1A253C80
	54	Special Screw	CHD1A080FFZRP	CHD1A080FFCP
	61	Screw	VTB3+8JFZR	VTB3+8JFC

9.3 EXTERIOR SECTION (A-50DA-K, A-50DA-S)



(1) EXTERIOR SECTION PARTS LIST (A-50DA-K, A-50DA-S)

Mark No.	Description	Part No.	Mark No.	Description	Part No.
	1 FRONT ASSY	COP12818E	26	Top Cabinet	See Contrast table (2)
NSP	2 GUARD11 ASSY	•••••	27	Rear Panel	See Contrast table (2) A
	3 D-POWER AMP MAIN ASSY	VUP12821ZC	28	Foot	See Contrast table (2)
	4 D-POWER AMP SUB ASSY	VUP12822Z	29	Ground Terminal	CMA1A006
	5 MAIN ASSY	COP12820E	30	Insulator (PC,CU,PC)	CMX1A322
	6 INPUT ASSY	VUP12819Z-1E	31	Heat Sink Sheet	CMZ1A143
	7 PHONO ASSY	CUP12820Z-2E	32	Fuse (F901: 250V/3.15A)	KBA2C3150TLEY
	8 USB ASSY	CUP12820Z-1E	33	Screw	See Contrast table (2)
NSP	9 GUARD18 ASSY	•••••	34	Rivet Base	CRE1A114
	10 INPUT ASSY	COP12819E	35	Rivet Pin	CRE1A115
	11 POWER ASSY	CUP12818Z-7E	36	Top Cushion	CHG1A530 B
	12 GUARD9 ASSY	CUP12818Z-9	37	Acetate Tape (10 x 15)	CHS1A217
	13 GUARD13 ASSY	CUP12818Z-13	38	Clamper	CHR301-V1
NSP	14 GUARD14 ASSY	•••••	39	Screw	VTW3+6JR
NSP	15 GUARD15 ASSY	•••••	40	Screw	VTB3+6JR
	16 •••••		41	•••••	
	17 Locker, Black	CRE1A037	42	Special Screw	See Contrast table (2)
⚠	18 Power Trans	VLT5U054ZE	43	Special Screw	CHD2A060R
	19 Foot Cushion	CHG1A528	44	Trans Screw	CHD3A023R
	20 Screw Cushion	CHG1A576	45	Screw	VTB3+10JFZR C
	21 Wire Clamp	CHE36-3	46	Screw	VTB3+6JFZR
	22 Wire Clamp	CRE1A110	47	Screw	VTB3+8JFZR
	23 Himelon Tape	CHS1A032	48	Screw	CTB4+10GFZR
	24 Cover Sheet	CHS1A154			
	25 Short Pin Plug (PHONO)	CJT1A100			

(2) CONTRAST TABLE

A-50DA-K/SYXEV8 and A-50DA-S/SYXEV8 are constructed the same except for the following:

Mark No.	Symbol and Description	A-50DA-K/SYXEV8	A-50DA-S/SYXEV8
26	Top Cabinet	CKC2A218B62	CKC2A218G70
27	Rear Panel	CKF1A505Z	CKF1A505Y
28	Foot	CKL1A204	CKL1A204H65
33	Screw	VTB3+8JFZR	VTB3+8JFC
42	Special Screw	CHD1A080FFZRP	CHD1A080FFCP

9.4 FRONT SECTION

[A-70DA-K, A-70DA-S]

A

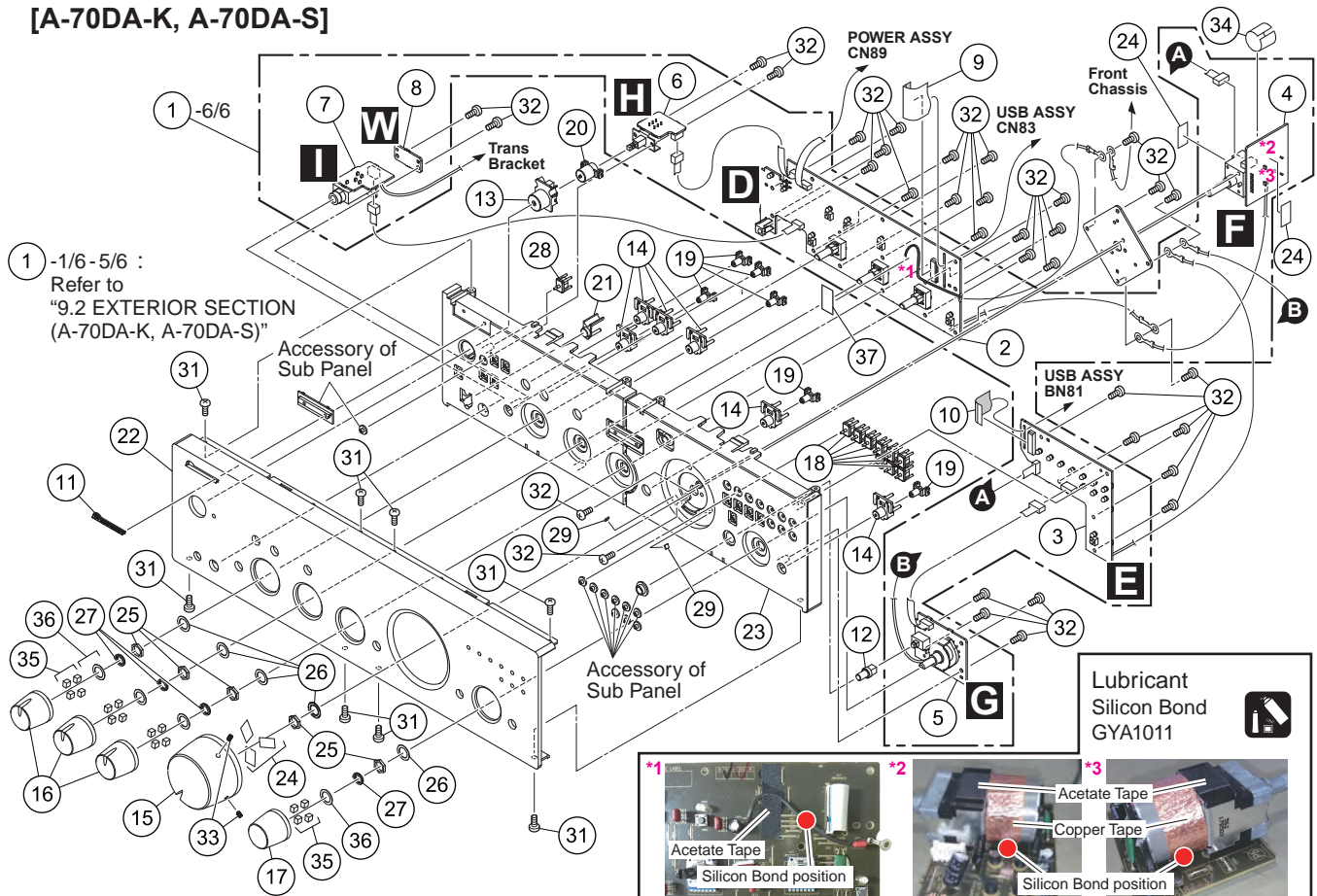
B

C

D

E

F

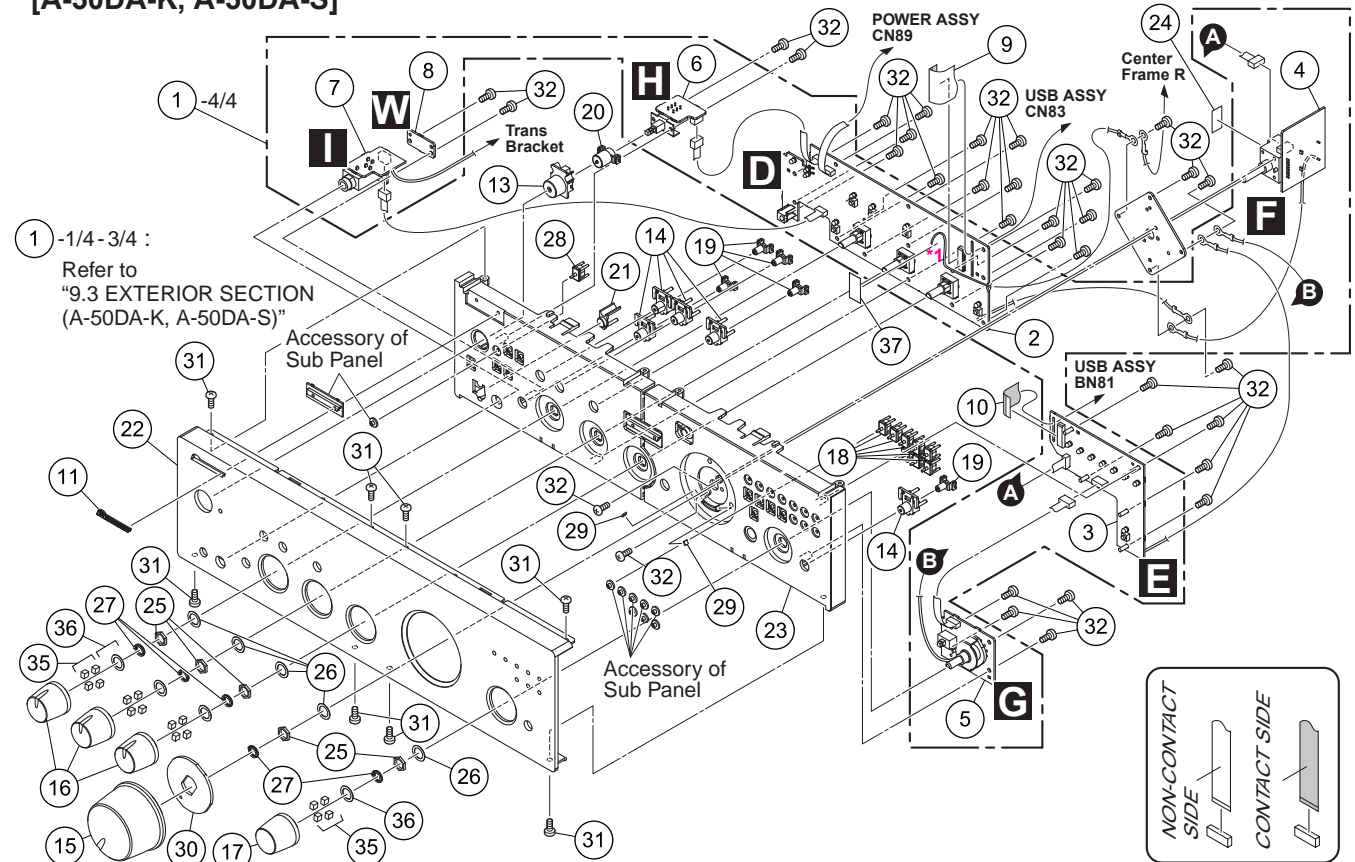


[A-50DA-K, A-50DA-S]

D

E

F



(1) FRONT SECTION PARTS LIST

Mark No.	Description	Part No.	Mark No.	Description	Part No.
1	FRONT ASSY	See Contrast table (2)	21	IR Window	See Contrast table (2)
2	FRONT ASSY	See Contrast table (2)	22	Panel (AL)	See Contrast table (2)
3	FUNCTION LED ASSY	See Contrast table (2)	23	Sub Panel	See Contrast table (2)
4	VOLUME ASSY	See Contrast table (2)	24	Acetate Tape (10 x 15)	CHS1A217
5	FUNCTION SW ASSY	See Contrast table (2)	25	M9 Nut	CNE1A017
6	SECOND POWER ASSY	CUP12818Z-5	26	Washer	CNW1A063
7	HEADPHONE ASSY	CUP12818Z-6	27	Knob Spring	CUS1A169
NSP 8	GUARD16 ASSY	•••••	28	Standby Indicator	CGL1A297
9	21P FFC	CWC4C4A21A180B08	29	Volume S Cushion	CHG1A538
10	21P FFC	CWC6F2A21A150B08001	30	Volume Cushion	See Contrast table (2)
11	Pioneer Badge (AL)	BAM1004	31	Screw	See Contrast table (2)
12	Cartridge Knob	See Contrast table (2)	32	Screw	VTB3+10JR
13	Power Knob	See Contrast table (2)	33	Volume Screw	See Contrast table (2)
14	Function Knob	See Contrast table (2)	34	Copper Tape	See Contrast table (2)
15	Volume Knob	See Contrast table (2)	35	Sponge	CHS1A407
16	Tone Knob ASSY	See Contrast table (2)	36	Sheet Cover	VHS1A408
17	Input Knob ASSY	See Contrast table (2)	37	Acetate Tape	C4FS101BL
18	Standby Indicator	CGL1A297Z			
19	Function Indicator	CGL1A298Z			
20	Power Indicator	CGL1A301			

(2) CONTRAST TABLE

A-70DA-K/SYXEV8, A-70DA-S/SYXEV8, A-50DA-K/SYXEV8 and A-50DA-S/SYXEV8 are constructed the same except for the following:

Mark No.	Symbol and Description	A-70DA-K/SYXEV8	A-70DA-S/SYXEV8	A-50DA-K/SYXEV8	A-50DA-S/SYXEV8
1	FRONT ASSY	COP12818B	COP12818B	COP12818E	COP12818E
2	FRONT ASSY	CUP12818Z-1BCD	CUP12818Z-1BCD	CUP12818Z-1EF	CUP12818Z-1EF
3	FUNCTION LED ASSY	CUP12818Z-2BC	CUP12818Z-2BC	CUP12818Z-2EF	CUP12818Z-2EF
4	VOLUME ASSY	CUP12818Z-3BCD	CUP12818Z-3BCD	CUP12818Z-3EF	CUP12818Z-3EF
5	FUNCTION SW ASSY	CUP12818Z-4BCD	CUP12818Z-4BCD	CUP12818Z-4EF	CUP12818Z-4EF
12	Cartridge Knob	CBC1A178	CBC1A178MQG69	Not used	Not used
13	Power Knob	CBC1A179	CBC1A179C81	CBC1A179	CBC1A179C81
14	Function Knob	CBT1A1163	CBT1A1163MQG69	CBT1A1163	CBT1A1163MQG69
15	Volume Knob	CGK1A213C79	CGK1A213C80	CGK1A211ZA	CGK1A211YA
16	Tone Knob ASSY	CGK1A209ZA	CGK1A209YA	CGK1A209ZA	CGK1A209YA
17	Input Knob ASSY	CGK1A210ZA	CGK1A210YA	CGK1A210ZA	CGK1A210YA
21	IR Window	CGL2A295Z	CGL2A295	CGL2A295Z	CGL2A295
22	Panel (AL)	CKM4A250ZC79	CKM4A250ZC80	CKM3A250ZC79	CKM3A250ZC80
23	Sub Panel	CGW3A528	CGW3A528MQG69	CGW3A528	CGW3A528MQG69
30	Volume Cushion	Not used	Not used	CHG1A656	CHG1A656
31	Screw	VTB3+8JFZR	VTB3+8JFC	VTB3+8JFZR	VTB3+8JFC
33	Volume Screw	CHD1A097FZ	CHD1A097FZ	Not used	Not used
34	Copper Tape	V4F1245	V4F1245	Not used	Not used