

Service Manual Monitoare PC

KFC. CA 6515 DS/DL

15" COLOR MONITOR

CA6515 DS/DL

1. Product overview: the CA6515DSJL is a 15 inch multi-scan VGA color monitor with a 0.28mm dot pitch CRT, digitized control and indication.

INPUT SIGNALS:

2.1 Horizontal: TTL & minimum drive current is 5mA, frequency coverage is 31Khz ~ 54Khz.

2.2 Vertical: TTL & minimum drive current is 5mA, refresh rate is 50hz ~ 120hz.

2.3 R,G & B: 0.7Vp-p analog standard VGA signal with 75 ohms input impedance.

POWER INLET: 100~250VAC AUTOMATIC SWITCHING.

4. The output specification of SMPS:

4.1 D522: 60VDC, 0.5A

4.2 D523: 90VDC, 0.1A

4.3 D526: 24VDC, 0.25A

4.4 D524: 12VDC, 0.3A

4.5 D521: -12VDC, 0.6A

4.6 D525: 7VDC, 0.6A

INTERIOR VR FUNCTIONS:

5.1 VR501 : For 60VDC adjustment, D522.

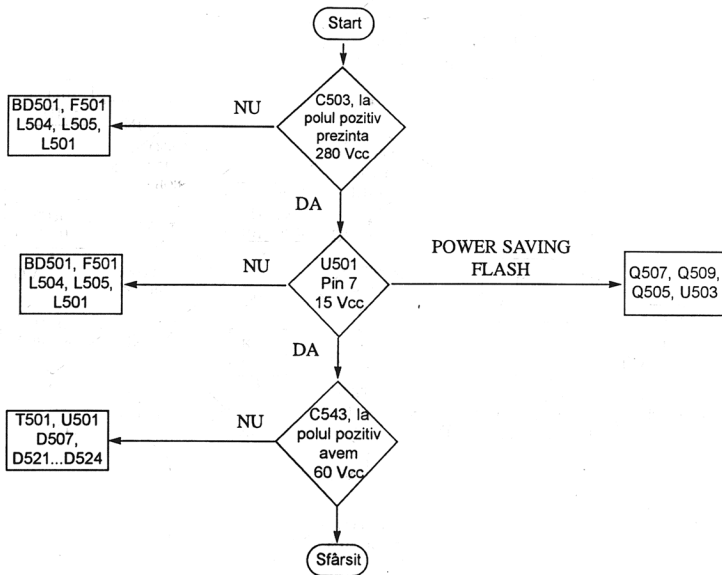
5.2 VR201 : For 92VDC to DC converter adjustment, Horizontal 0/P.

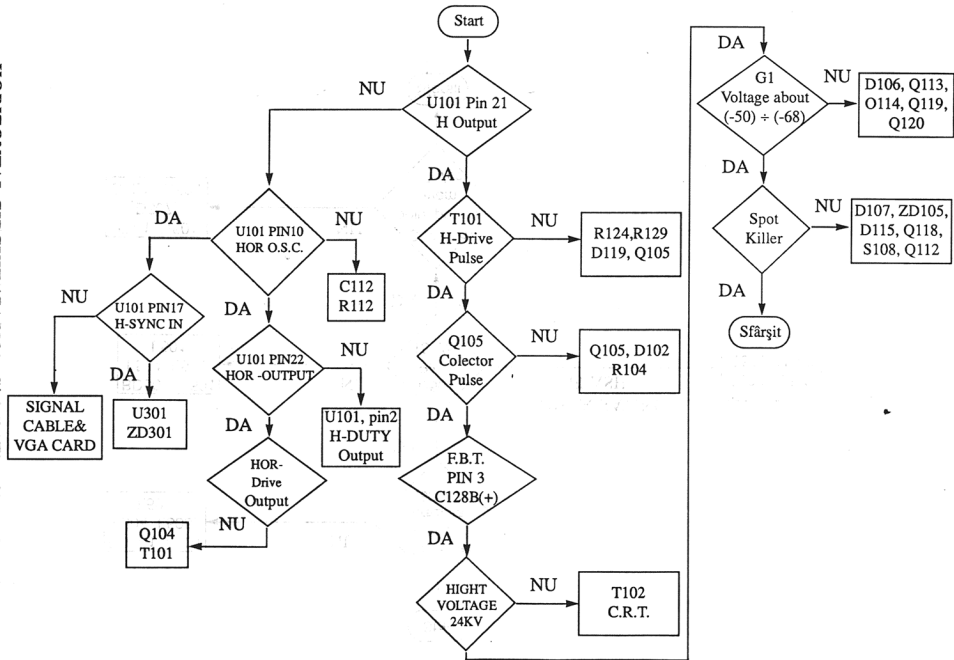
5.3 VR202 : For parallel distortion adjustment.

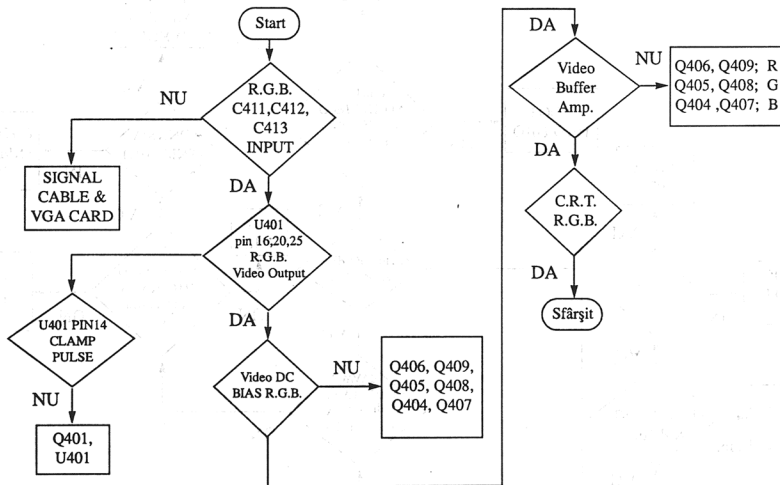
5.4 VR101 : For ABL adjustment.

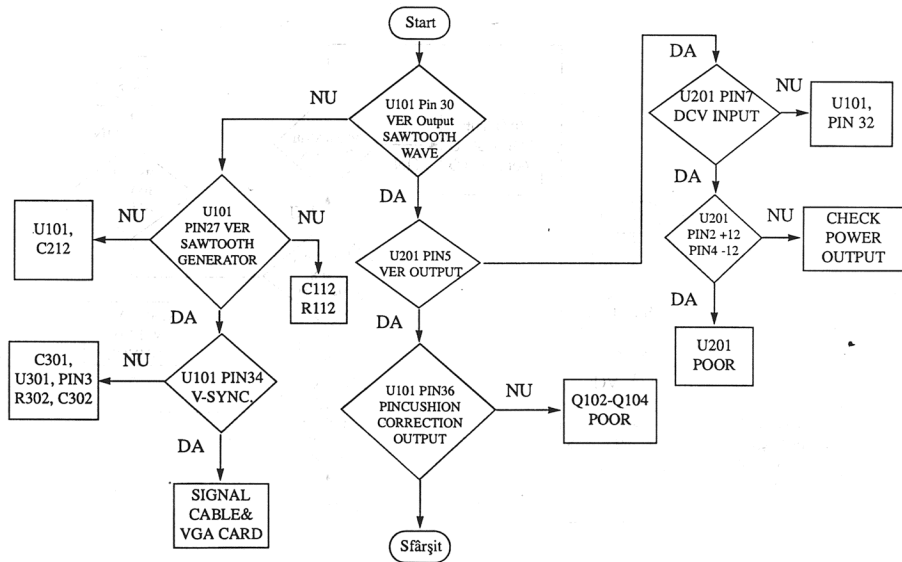
5.5 VR401~403 : For raster adjustment.

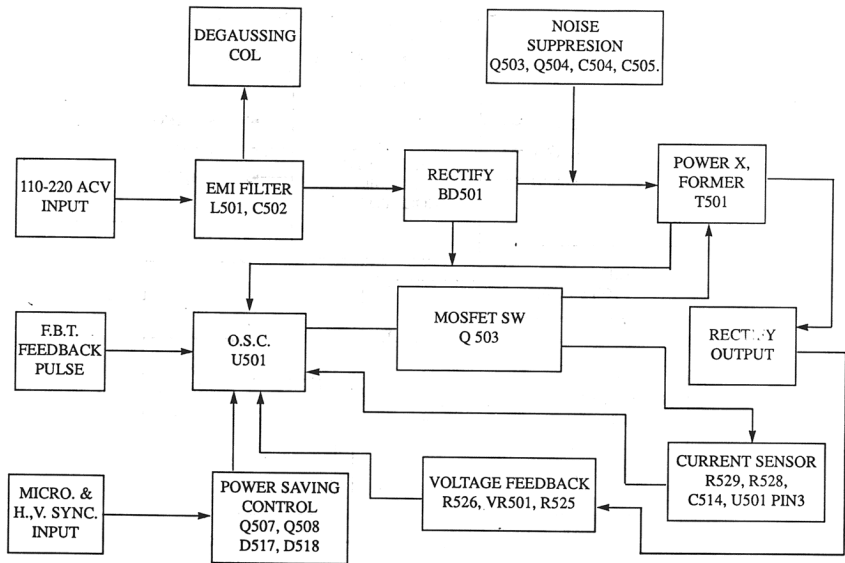
5.6 VR404~406 : For high brightness adjustment.

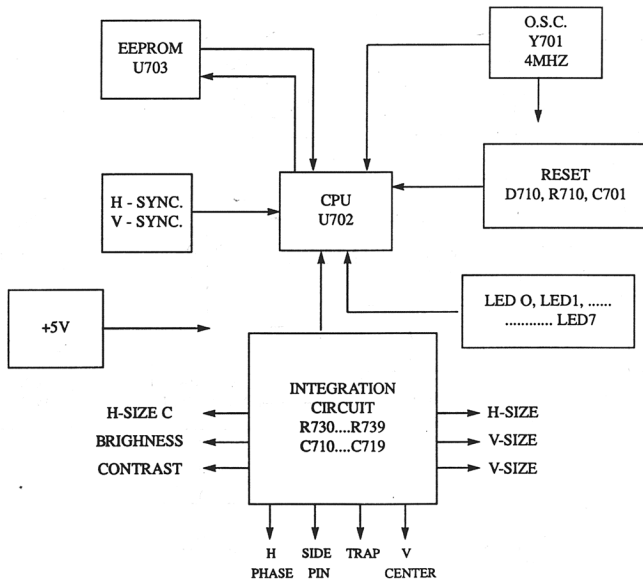


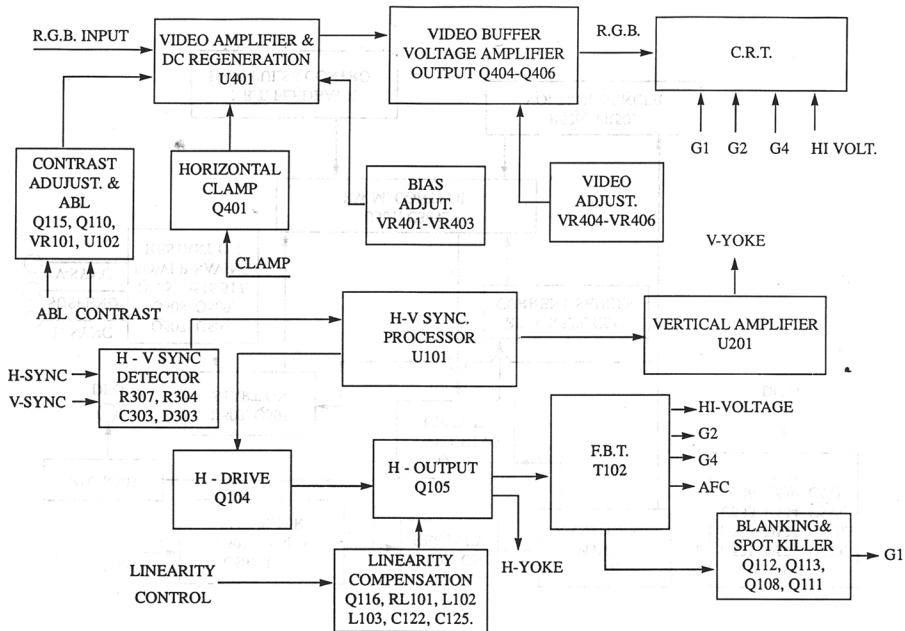


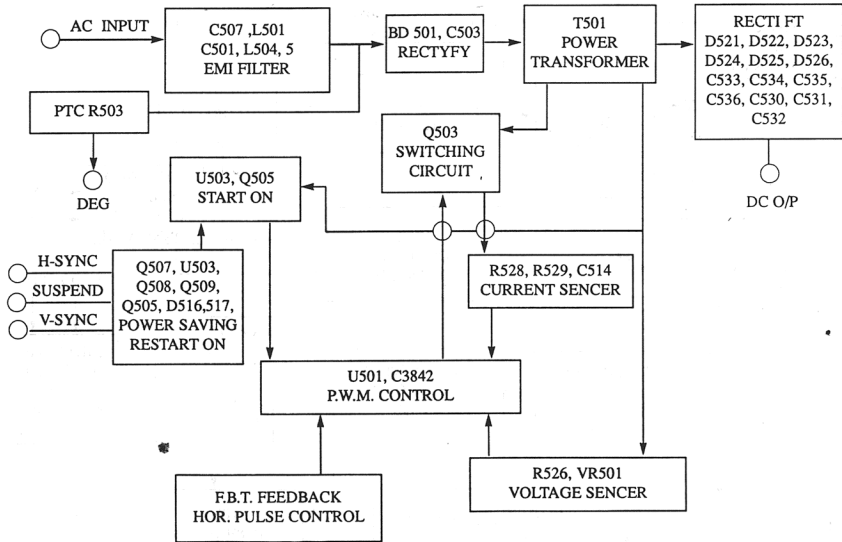


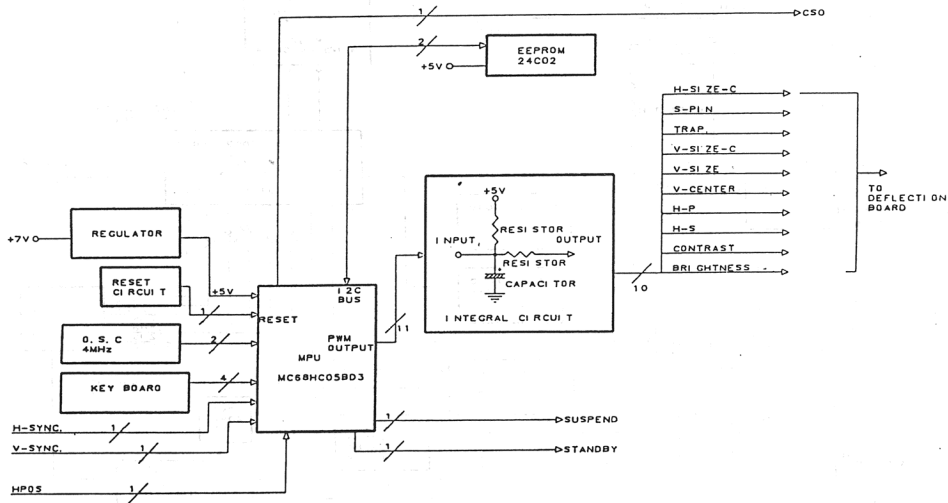


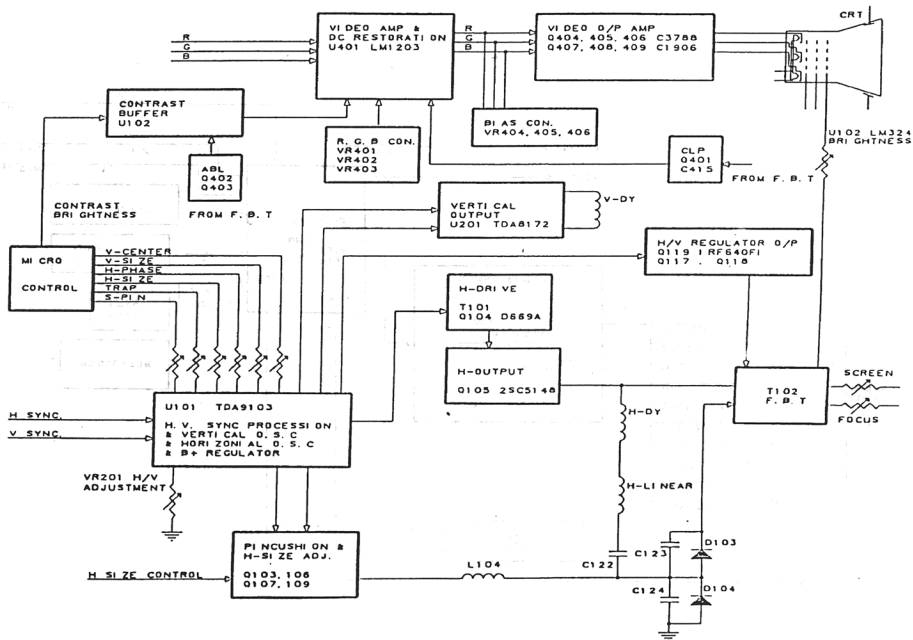


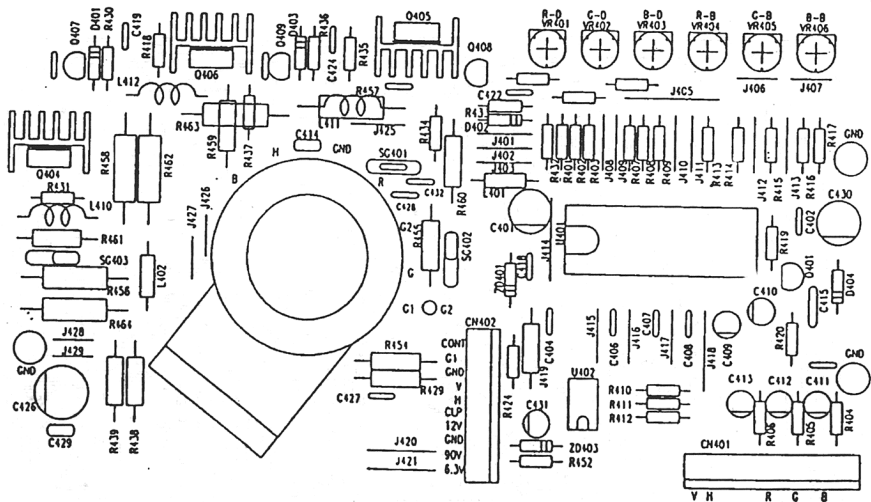


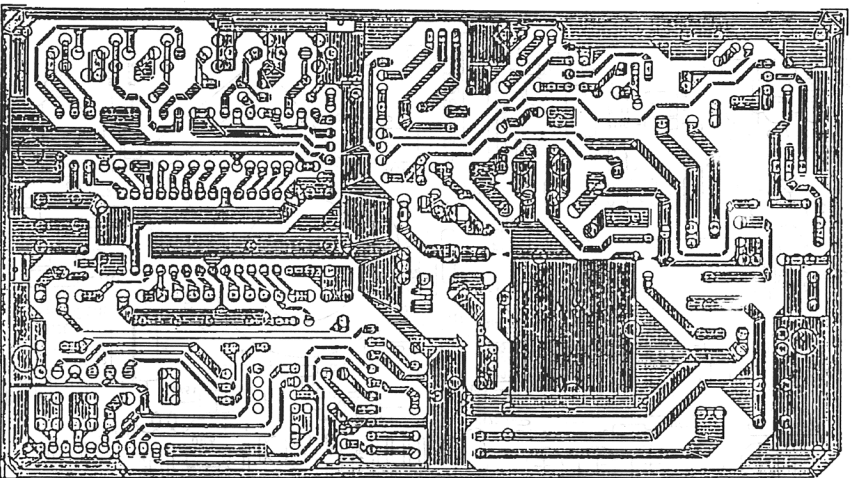




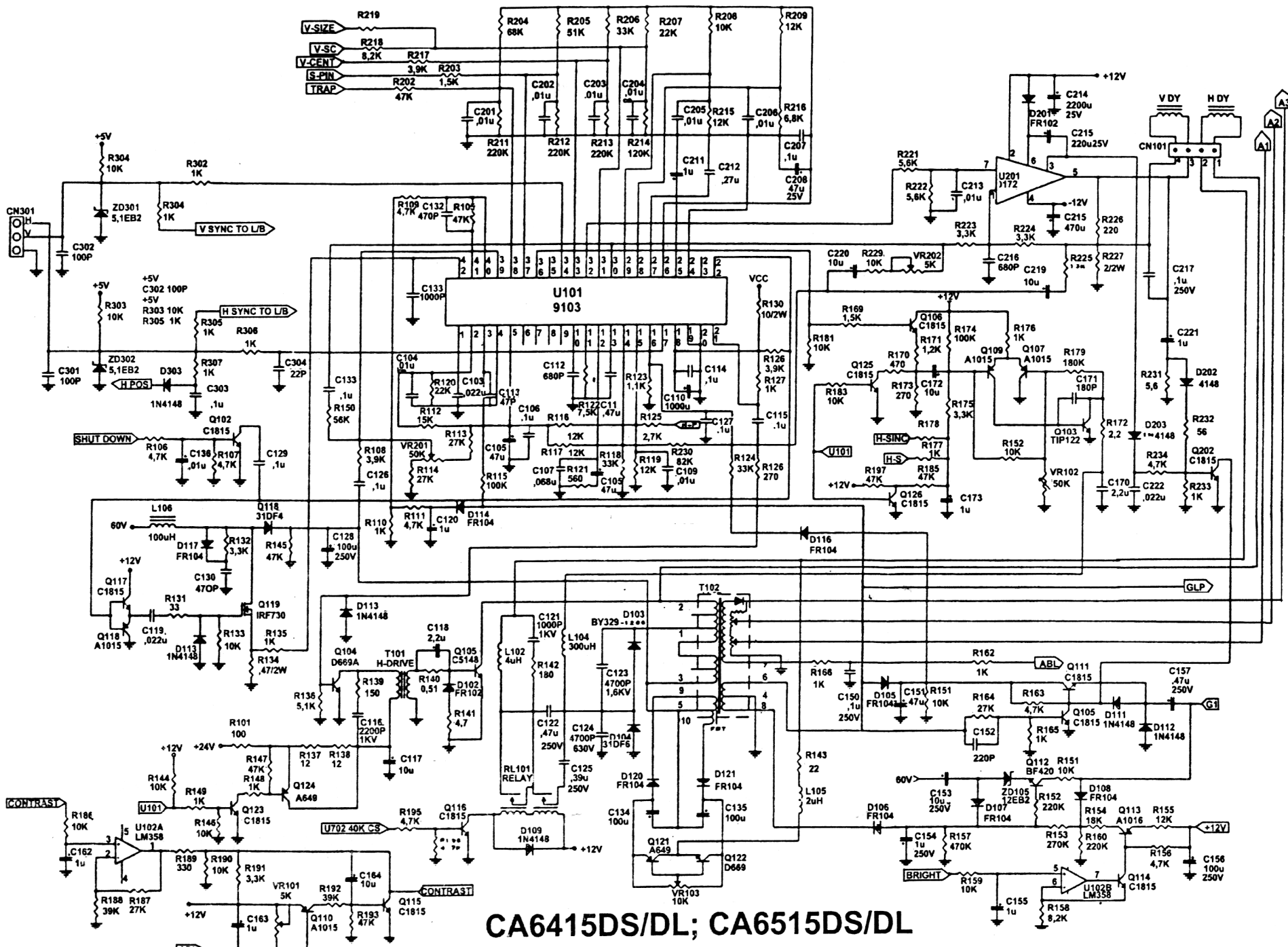


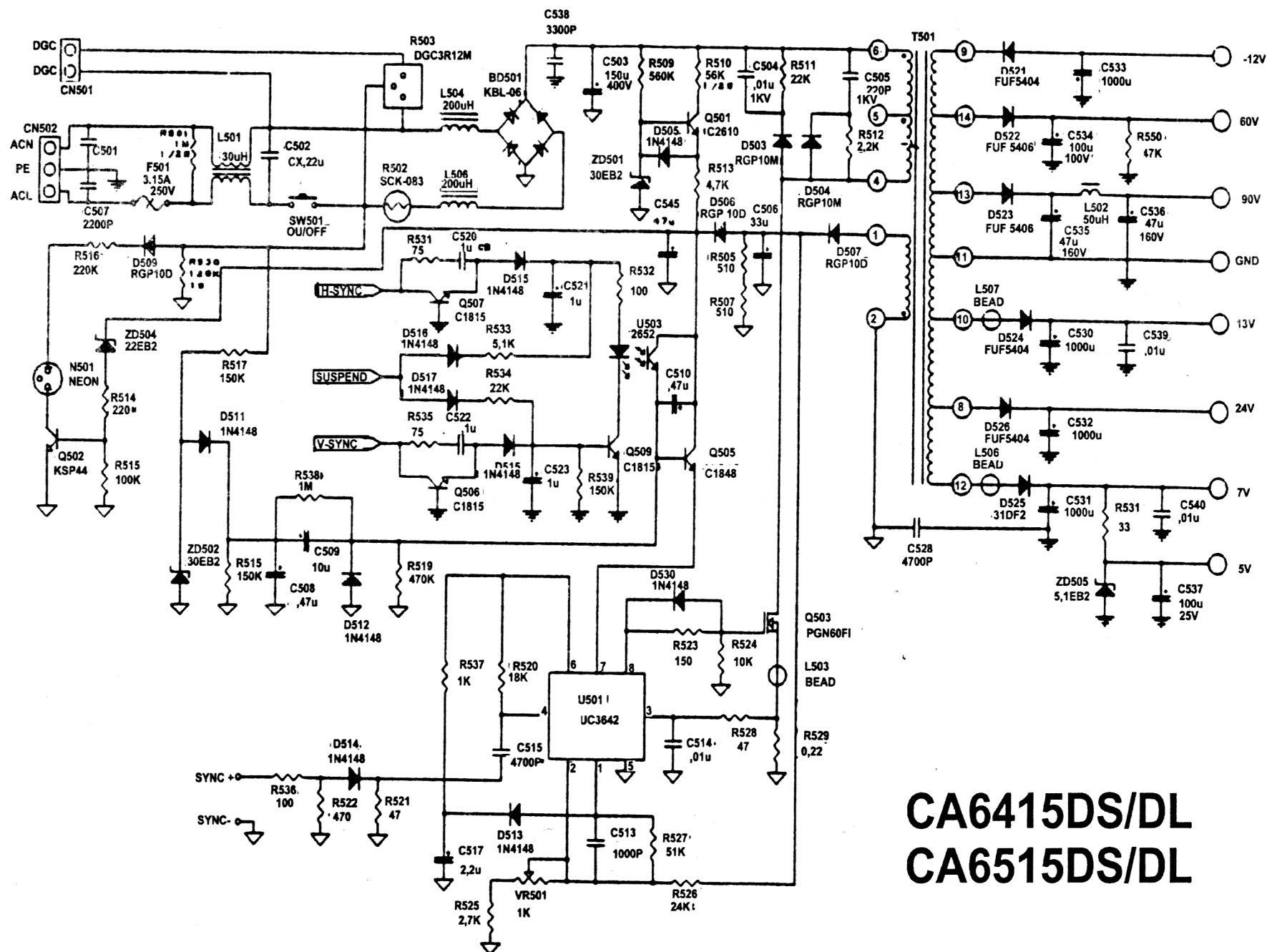




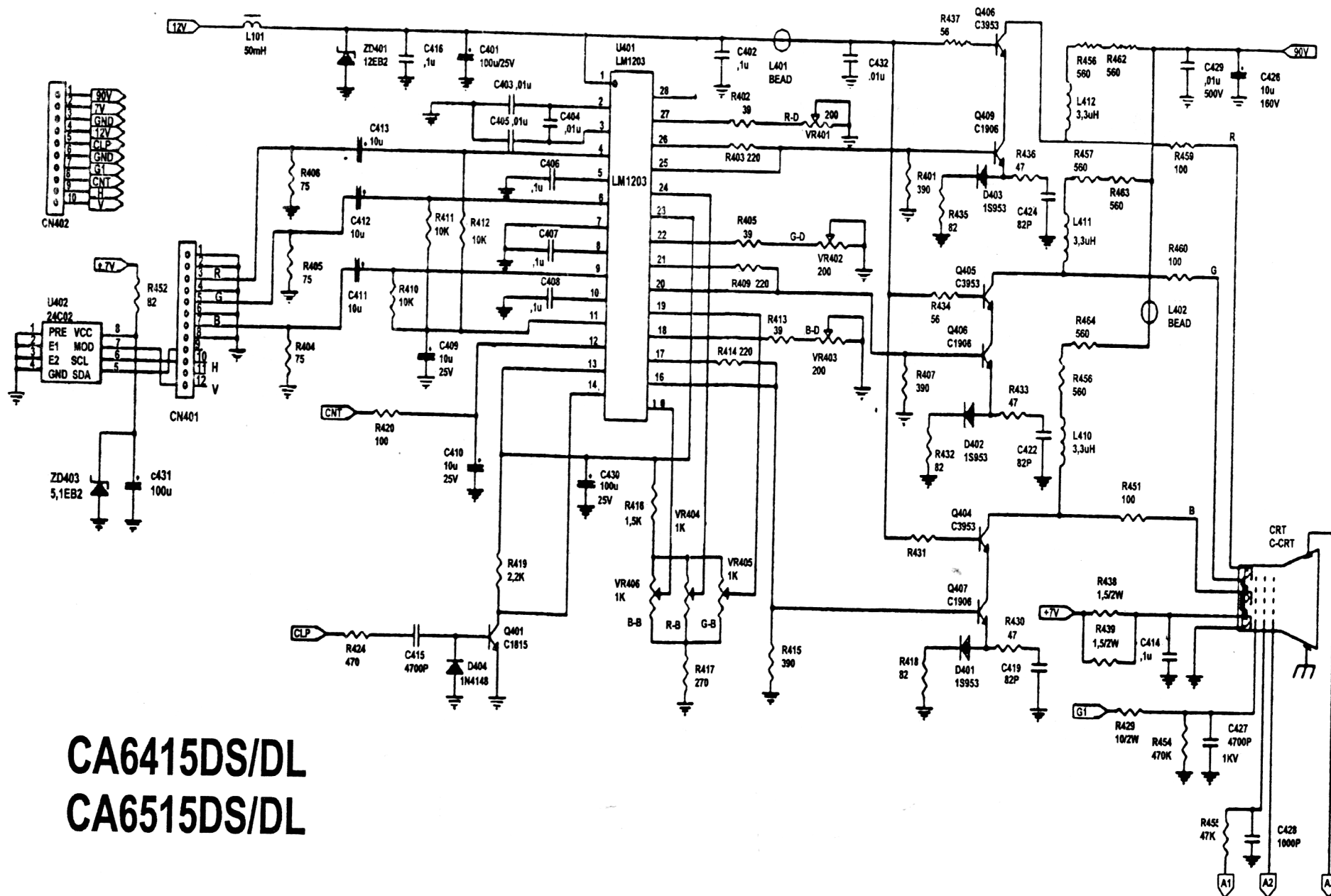


CRT BD (CA6515DS/IDL)





CA6415DS/DL
CA6515DS/DL



CA6415DSDL; CA6515DS/DL

