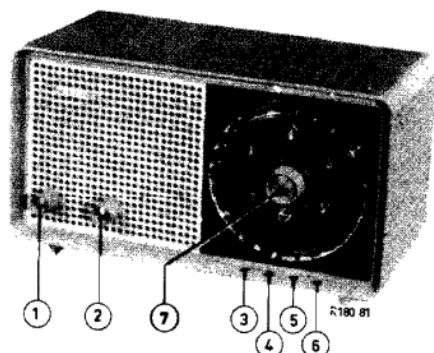


PHILIPS

Service

RADIO

B3X90U -00C -00F -00K
-32C -32F -32K

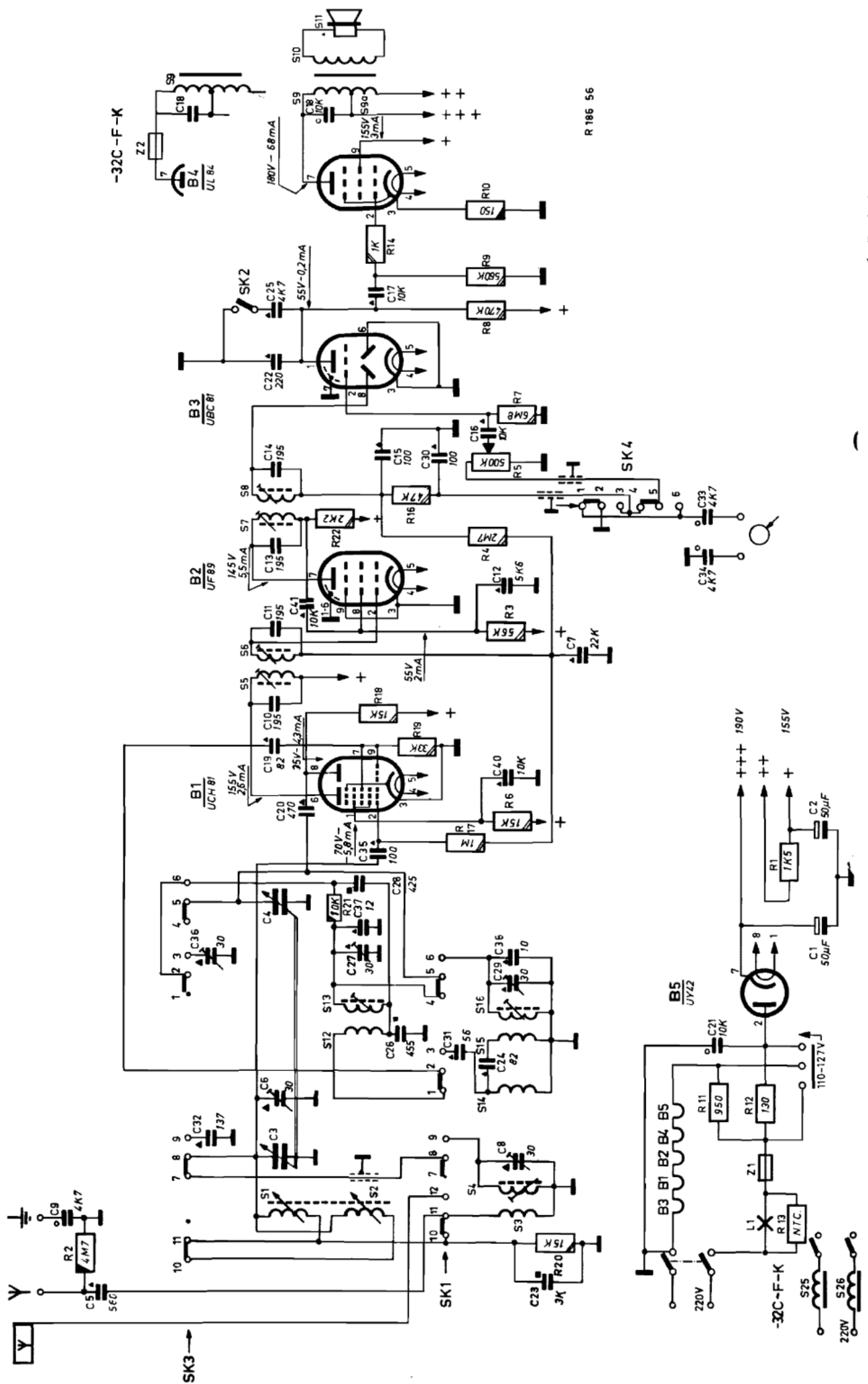


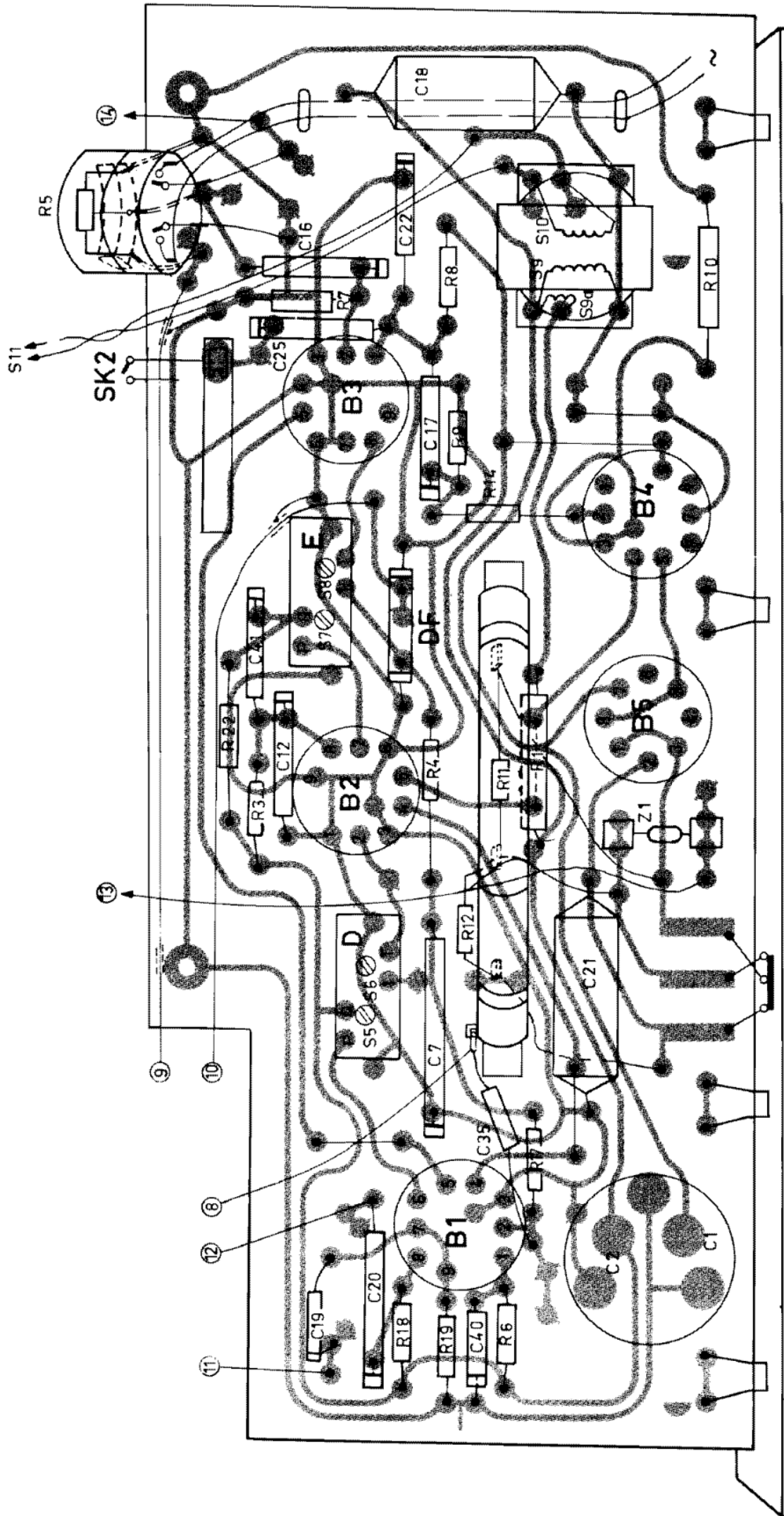
| <u>Valves - Buizen - Tubes</u> | <u>I.F. - M.F. - M.F.</u> |
|---|--|
| B1 - UCH81 | 452 kc/s |
| B2 - UF 89 | |
| B3 - UBC81 | <u>Mains voltages - Netspanningen - Tensions de réseau</u> |
| B4 - UL84 | 110 - 125 - 220 V \approx |
| B5 - UY 42 | |
| <u>Dial lamp - Schaallampje - Lampe de cadran</u> | <u>Consumption - Verbruik - Consommation</u> |
| L1 - 8009 D - 07 | 52 W (220 V) |
| <u>Loudspeaker - Luidspreker - Haut parleur</u> | <u>Dimensions - Afmetingen - Dimensions</u> |
| AD 2500 X | 328 x 183 x 155 mm |

| <u>Wave-ranges - Golfbereiken - Gammes d'ondes</u> |
|--|
| L.W. - L.G. - G.O. : 1154 - 2000 m (260 - 150 kc/s) |
| M.W. - M.G. - P.O. : 186 - 580 m (1622 - 517 kc/s) |
| S.W. - K.G. - O.C. : 16,58 - 50,5 m (18,1 - 5,94 Mc/s) |

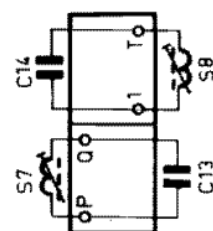
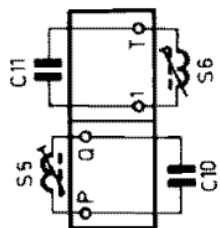
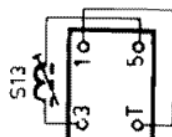
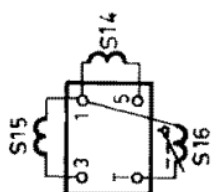
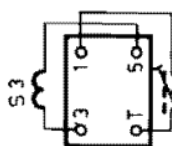
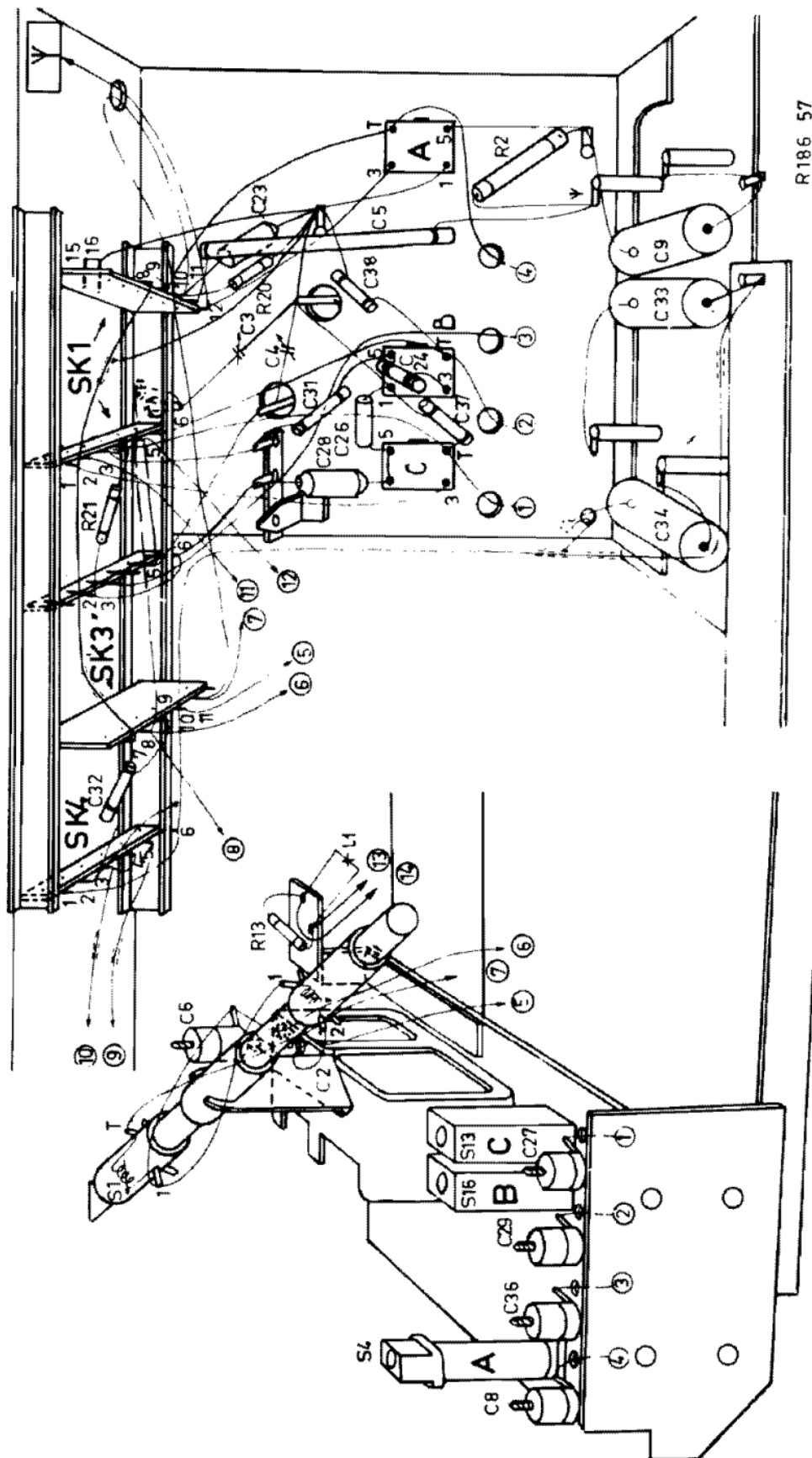
| <u>Controls</u> | <u>Bedieningsorganen</u> | <u>Organes de commande</u> |
|----------------------------------|--------------------------------|--|
| 1. Volume control + mains switch | Volumeregelaar + netschakelaar | Régulateur d'intensité + comm. de réseau |
| 2. Tone control | Toonregelaar | Régulateur de tonalité |
| 3. P.U. switch | P.U. schakelaar | Commutateur de P.U. |
| 4. L.W. switch | L.G. schakelaar | Commutateur G.O. |
| 5. M.W. switch | M.G. schakelaar | Commutateur P.O. |
| 6. S.W. switch | K.G. schakelaar | Commutateur O.C. |
| 7. Tuning | Afstemming | Syntonisation |

| | | | | | | | | | | | | | | | | |
|---|----|----|----|----|----|----|----|----|----|----|----|----|----|----|----|----|
| S | 25 | 26 | 1 | 2 | 3 | 4 | 14 | 12 | 15 | 13 | 16 | 7 | 8 | 9 | 10 | 11 |
| C | 5 | 23 | 9 | 8 | 3 | 32 | 6 | 24 | 31 | 26 | 21 | 29 | 36 | 27 | 38 | 37 |
| R | 2 | 20 | 13 | 11 | 12 | | | | | | | | | | | |





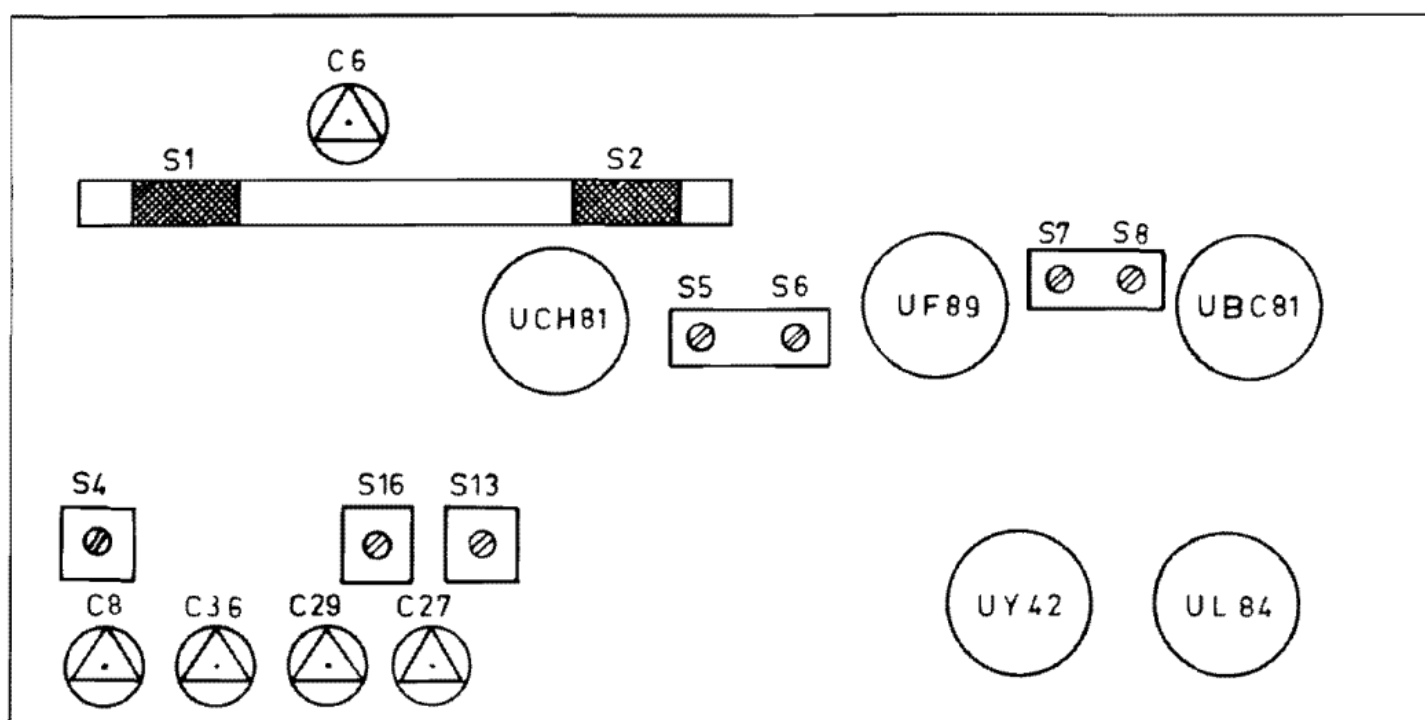
| S | 1 | 2 | C | B | A |
|---|----|----|----|----|----|
| C | 36 | 29 | 34 | 28 | 23 |
| R | 27 | 6 | 32 | 37 | 95 |
| | | | 13 | 21 | 20 |
| | | | | | 2 |



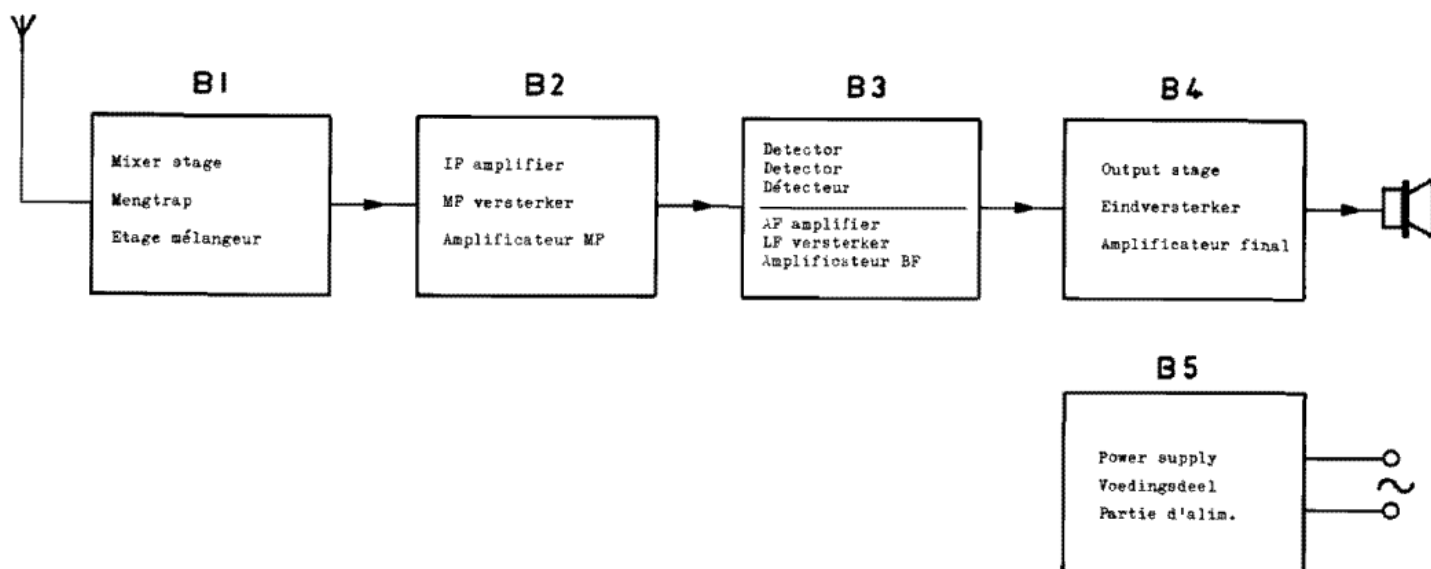
R186 58

R186 57

| | | | | |
|--|-------------|-------------------|---------------------------------|----------------------------------|
| | Push button | Tuning capacitor | Signal | Adjust for max. output |
| | Druktoets | Afstemcondensator | Signaal | Afregelen op max. uitg. spanning |
| | Touche | Cond. variable | Signal | Régler au max. de sortie |
| I.F. circuits M.F. kringen Circuits M.F. | 5 | minimum | 452 kc/s - 33.000 pF g1 - B2 | S8, S6 |
| | | | 452 kc/s - 33.000 pF g1 - B1 | S5, S6 |
| R.F. circuits H.F. kringen Circuits H.F. | 4 | minimum | 264 kc/s | C36 |
| | 5 | | 1630 kc/s | C27, C6 |
| | 6 | | 18,3 Mc/s | C29, C8 |
| | 4 | maximum | 147 kc/s | S1 |
| | 5 | | 512 kc/s | S13, S2 |
| | 6 | | 5,8 Mc/s | S16, S4 |



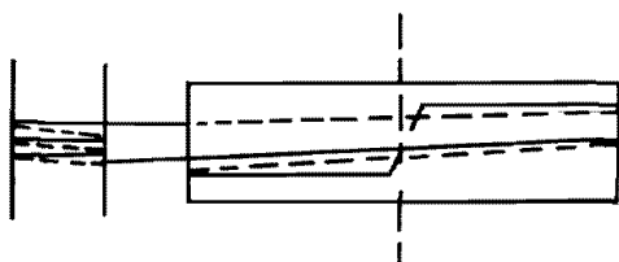
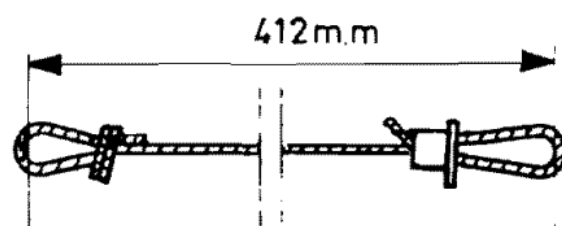
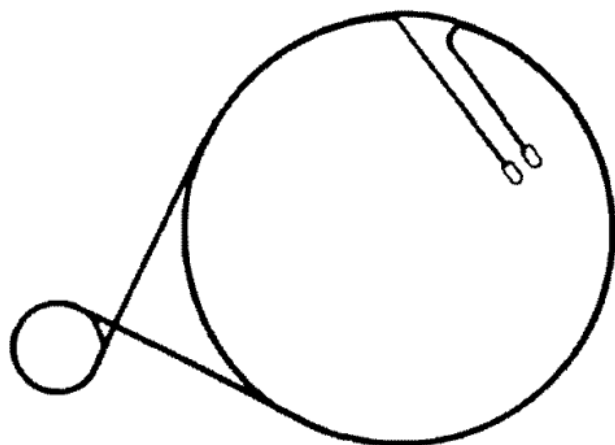
R 186 61



R 183 09

| | | | |
|---------------------------------|-------------------------------|--------------------------|---------------|
| Cabinet, -00C, -32C | Kast, -00C, -32C | Coffret, -00C, -32C | A3 782 28 |
| Cabinet, -00F, -32F | Kast, -00F, -32F | Coffret, -00F, -32F | A3 782 27 |
| Cabinet, -00K, -32K | Kast, -00K, -32K | Coffret, -00K, -32K | A3 781 67/BJ |
| Front | Front | Front | P5 210 22/423 |
| Knob, volume control | Knop, volumeregeling | Bouton, rég. d'intensité | A3 782 31/UX |
| Knob, tone control | Knop, toonregeling | Bouton, rég. de tonalité | A3 783 31/UX |
| Knob, tuning, large | Knop, afstemming groot | Bouton, synt. grand | P5 260 31/931 |
| Knob, tuning, small | Knop, afstemming klein | Bouton, synt. petit | A3 783 07/UX |
| Socket plate, aerial | Aansluitplaat, antenne | Douille, pour antenne | A3 352 91 |
| Driving drum | Aandrijftrommel | Tambour pour cond. var. | P4 382 01/112 |
| Tension spring, in driving drum | Veer, in aandrijftrommel | Ressort, dans tambour | 89 312 10 |
| Voltage adapter | Spanningsomschakelaar | Carrousel de tension | A3 230 51 |
| Push button | Drukknop | Touche | P5 420 31/.59 |
| Contact slide, p.u.-switch | Contactschuif, p.u.schakelaar | Tiroir, comm. p.u. | A3 666 65 |
| Contact slide, SW - switch | Contactenschuif, KG-schak. | Tiroir, comm. OC | A3 666 67 |
| Contact plate, p.u.-switch | Contactenplaat, p.u.schak. | Plaquette, comm. p.u. | A3 666 68 |
| Contact plate, SW- switch | Contactenplaat, KG-schak. | Plaquette, comm. OC | A3 666 69 |
| Contact lip | Contactlip | Contact pour plaquette | A3 665 27 |
| Slide contact | Schuifcontact | Contact pour tiroir | 971/77 |
| Dial, N- B | Schaal N-B | Cadran, N-B | A3 955 60 |

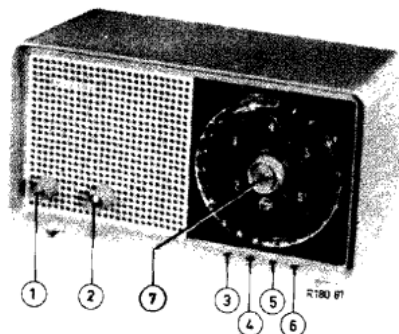
| | | | | | | | |
|------|------------|-------|---------------|------|---------------|-----------------|----------------|
| S1) | 922/03 | S9) | A3 153 51 | C3) | 49 001 93 | <u>-32C-F-K</u> | |
| S2) | | S9a) | | C4) | | S25) | A3 128 92 |
| S3) | 921/16-50m | S10) | | R1 | E 001 AD/A1K5 | S26) | |
| S4) | | S12) | 923U/185-590m | R5 | B1 640 20 | | |
| S5) | | S13) | | R11) | B1 634 90 | | |
| S6) | A3 906 00 | S14) | | R12) | | Z2 | 220 V : 974/80 |
| C10) | | S15) | 923/16-50 m | R13 | 928/4K5 | | 127 V : 974/63 |
| C11) | | S16) | | | | | |
| S7) | | C1) | AC 5306/50+50 | Z1 | 974/315 | | |
| S8) | A3 906 00 | C2) | | | | | |
| C13) | | | | | | | |
| C14) | | | | | | | <u>4H/SR.</u> |



PHILIPS *Service*

RADIO

B3X90U/01C/01F/01K



With the exception of the rectifying valve the versions 01C-01F and 01K are identical to the 00C-00F and 00K versions respectively.

Delete : Valve UY42

Add : Valve UY89

For modifications in the circuit and wiring diagrams see fig. 1 and 2.

- - - - -

Met uitzondering van de gelijkrichterbuïs zijn de uitvoeringen 01C-01F en 01K respectievelijk gelijk aan de 00C-00F en 00K.

Afvoeren : Buis UY42

Toevoegen : Buis UY89

Voor principe en bedradings-wijzigingen zie fig. 1 en 2.

- - - - -

A l'exception du tube redresseur les exécutions 01C-01F et 01K sont identiques aux exécutions 00C-00F et 00K respectivement.

Supprimer : Tube UY42

Ajouter : Tube UY89

Pour les modifications dans le schéma de principe et de câblage voir la fig. 1 et 2.

- - - - -

Mit Ausnahme der Gleichrichterröhre sind die Ausführungen 01C-01F und 01K gleich an bzw. 00C-00F und 00K.

Entfallen : Röhre UY42

Hinzufügen : Röhre UY89

Siehe bezüglich die Änderungen im Prinzip-Schaltbild und im Verdrahtungs-schema die Abb. 1 und 2.

| | | | | | | | | | | |
|------------------------|--|--|--|--|--|--|--|--|--|--|
| SERVICE INFORMATION | | | | | | | | | | |
|------------------------|--|--|--|--|--|--|--|--|--|--|

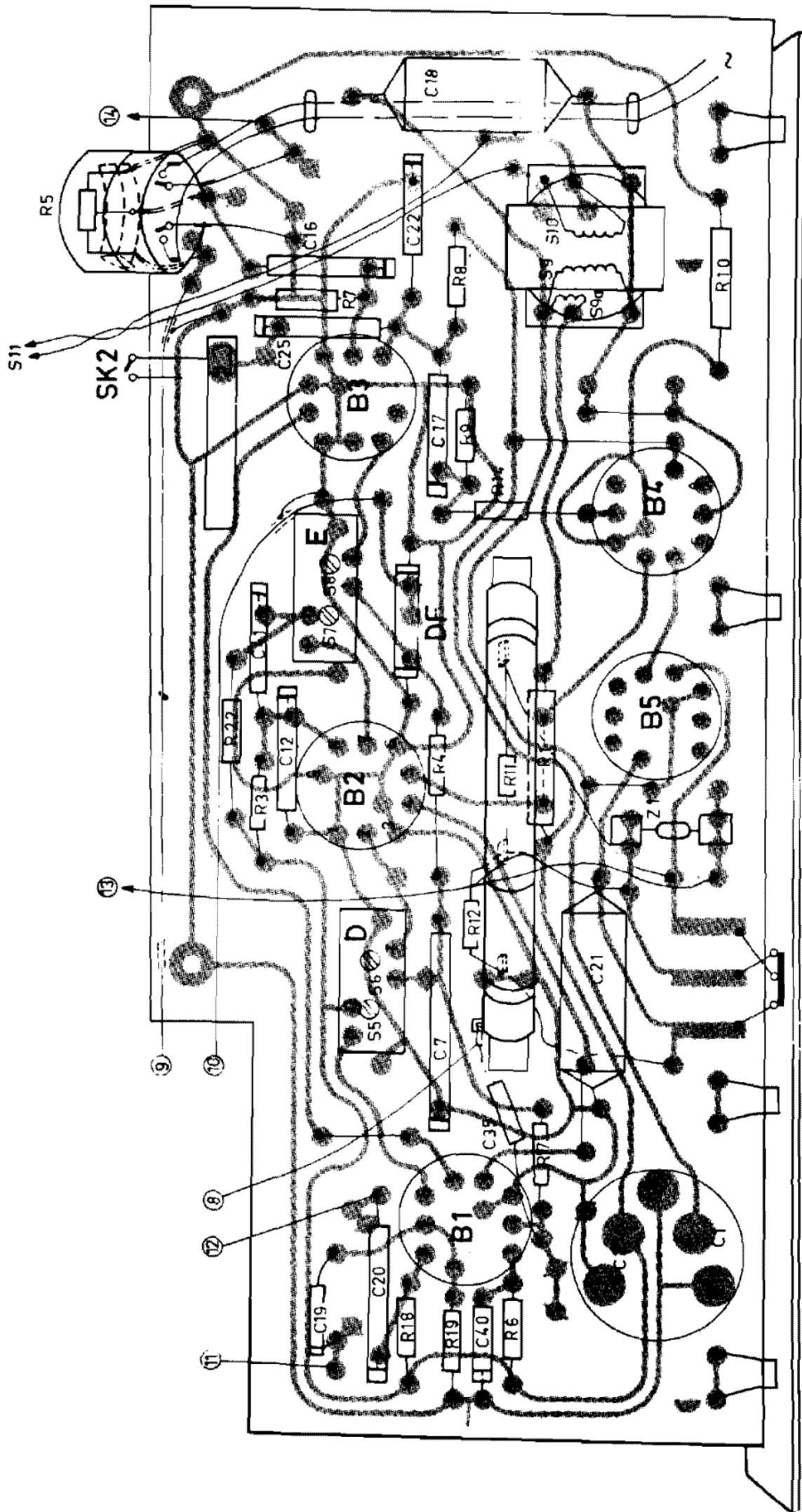


Fig2