

# SERVICE MANUAL

PROFESSIONAL POWER  
**AMPLIFIER**

**V-3000/4000**

**interM**

www.inter-m.com  
MADE IN KOREA

**interM**

## CONTENTS

Electrical Adjustment Procedure	1
Specifications	2
Electrical Parts List	3~8
Top and Bottom View of P.C.Board	9~14
Wiring Diagram	15
Block Diagram	16
Schematic Diagram	17~26

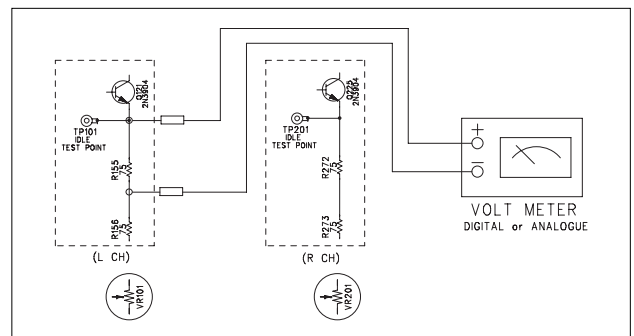
## ELECTRICAL ADJUSTMENT PROCEDURE

### ■ REQUIRED TEST EQUIPMENT

1. Oscilloscope
2. 1kHz audio sine wave generator
3. Digital multimeter
4. 8ohm resistive load (rated for at least 750W)

### ■ IDLE CURRENT (V-3000/4000)

1. Setting  
Set the master volume controls minimum.
2. Connection



### 3. Adjustment

- a. Measure the DC voltage across the resistor R155 and R272. adjust VR101 and VR201.
- b. Adjust VR101 until the DC voltage is within the range as below table.
- c. Repeat the adjustment(a,b) for the other channel.

Model	DC voltage range	Adjust
V-3000	400mV±20mV	Channel 1 : DC voltage across R155(75Ω), adjust VR101 Channel 2 : DC voltage across R272(75Ω), adjust VR201
V-4000	400mV±20mV	

SPECIFICATIONS

	V-3000		V-4000	
	120 VAC	230 VAC	120 VAC	230 VAC
Rated Output Power STEREO	8Ω (1kHz, THD 0.1%) 4Ω (1kHz, THD 0.1%) 2Ω (1kHz, THD 0.5%)	550 W 1000 W 1600 W	550W 1000W 1300W	750W 1300W 2100W
BRIDGED	8Ω (1kHz, THD 0.1%) 4Ω (1kHz, THD 0.5%)	2000 W 3200 W	2000W 3000W	2600W 4000W
Input Sensitivity				
Rated Power @4Ω		0.95 V		1.05 V
Rated Power @8Ω		1 V		1.15 V
Voltage Gain @4Ω		36.8 dB		
Frequency Response 1W@8Ω		20 Hz~20 kHz : +0,-0.2 dB 10 Hz~100 kHz : +0,-3 dB		
Damping Factor 1KHz @8Ω		> 400		
T.H.D (20Hz~20KHz, 1/10 Power STEREO 4Ω, 8Ω & BRIDGED 8Ω)		< 0.05%		
Channel Separation 1KHz, Half Power @8Ω		more than 70 dB		
Residual Noise		more than 73dB		
Signal to Noise Ratio		105 dB		106 dB
Output Circuitry		2 Step Class H		
Input Impedance		12 kΩ Balanced		
High Pass Filter (30Hz/50Hz)		12dB/OCT		
Indicators		Active, Signal, Prot/Clip		
Protection Circuitry		Full Short Circuit, Thermal Protection Power ON/OFF Muting, DC Output Protection		
Cooling		2 Variable Speed Fans, Front to Rear Air Flow		
Connectors		Input : XLR(Female), 1/4" TRS Output : 4 Pole Speaker Socket		
Operating Temperature.		-10°C +40°C		
Power Source	120VAC/60Hz	230VAC/50Hz	120VAC/60Hz	230VAC/50Hz
Power Consumption 1/8 Power @4Ω.	12A	6A	14A	7A
Weight		11.7 kg/25.8lb		11.8 kg/26lb
Dimensions		482(W) x 88(H) x 407(D)mm/19(W) x 4.6(H) x 16.2(D)in		

ELECTRICAL PARTS LIST (V-3000)

Ref.	Part No.	Description	Value	Ref.	Part No.	Description	Value
AMP BD (4000006600)				AN11,AN12	4355428921	CON ASSY,DS,2P,P2,6,P2,6,510MM	ASSY
E4.5	1508400501	JUMP WIRE,0.5/50A/M	JUMPER	AN1	4355429300	CON ASSY,DS,1P,P2,6,P2,6,400MM	ASSY
Q305	2038104940	TR,PV,PWP,3A,100V,TPE2C	TP22C	AN5	4355429303	CON ASSY,DS,1P,P2,6,P2,6,510MM	ASSY(120VAC)
Q115-118	2028107118	TR,PV,PWP,15A,230V/25A1943,TO-3P(J)	25A1943	AN9,AN10	4355716121	CON ASSY,DS,2P,P2,6,P2,6,510MM	ASSY
Q219-222	2028107995	TR,PV,PWP,8A,250V/AIE13033,TO-220	AIE13033	AN2	4355791712	CON ASSY,DS,1P,P2,6,P2,6,250MM	ASSY
Q114 Q218	2028110941	TR,PV,PWP,1A,230V/25A1837	25A1837	J19	4355795704	CON ASSY,DS,1P,250T08,P2,6,110MM	ASSY
Q125 Q229	2028110941	TR,PV,PWP,1A,230V/25A1837	25A1837	Z20	4355833204	CON ASSY,DS,1P,250T08,P2,6,110MM	ASSY
Q130-133	2028407122	TR,PV,PWP,15A,230V/25C3200,TO-3P(J)	25C3200	CN1	4428929213	CON WAFER,BOTTOM,14P,2/ST	PC1435-14P
Q234-237	2028407995	TR,PV,PWP,8A,250V/AIE13033,TO-220	AIE13032	CN2	4428929216	CON WAFER,BOTTOM,14P,2/ST	PC1435-14P
Q129 Q233	2028410884	TR,PV,PWP,1A,230V/25C4793,TO-220S	25C4793	CN301-302	4428959003	CON WAFER,BOTTOM,3P,ST	UV5267-03P
Q120 Q224	2028900101	TR,UGBT,JF,N27A,800V,8G4PC30	8G4PC30V	CN3-4	4459998210	TERMINAL,250PCB TAB	Z501
Q1-2	2048247900	TR,PV,MF,N,60A,400V/JTF60N06G,TO-220	JTF60N06	R1	6359098851	RES,AF,A21,51,1%,240E,ZETTLER	DC-2W
Q110 Q137 Q211	2058100106	DIODE,RE,3A,400V,1N640A,DO-201A	1N640A	H301	7505299310	HEAT SINK,ODMM,REG TR	Heat sink
D219	2058199100	DIODE,BR,50A,600V,8BV5006,8BV25	8BV5006	LM101 LM201	854993380	LED LIMITER	LED LIMITER
BD1	2058300995	DIODE,RE,15A,200V,MUR1540,TO-2	MUR 1540	Q124 Q228	2030800998-1	TR,SG,PWP,250MA,40V,2N3904	2N3904
D20-23	2058300995	DIODE,RE,15A,200V,MUR1540,TO-220AC	MUR 1520	Q121 Q225	3022165455-1	RES,MF,16.5K,1W,1%,RA,TA	16.5K 1W 1%
D113 D120 D214	2058300995	DIODE,RE,15A,200V,MUR1540,TO-220AC	MUR 1520	R34	3029303375-1	RES,MF,30K,2W,5%,RA,TA	30K 2W
D220	2058499700	DIODE,SV,30A,400V,DSEF30-04A,TO-247AD	DSEF30-04A	R724 R276-278	3039150575-1	RES,MF,15.2W,5%,RA,TA	15.2W
D18-19 D24-25	2058499700	DIODE,SV,30A,400V,DSEF30-04A,TO-247AD	MUR40	R348	3039159575-1	RES,MF,1.5,2W,5%,RA,TA	1.5 2W
D2-3	2058499800	DIODE,SV,4A,400V,MUR40,DO-201AD	3.98A	R202 R275	3039159575-1	RES,MF,6.2,2W,5%,RA,TA	5.6 2W
D105 D206	2058502039	DIODE,ZN,500MM,BM,3,PV,DO-35,1	248M	VR101 VR201	3248550120-1	RES,SM,FT,6.3 TP500	500
D313	2058502240	DIODE,ZN,500MM,BM,2,4V,DO-35,1A	158M	C24	3409210039-1	CAP,EC,5A,VB,10UF,16V,M,SK11,7	100/16
D307-310	2058510150	DIODE,ZN,1W,BM,15V,DO-41,TA	12V 1W	C30 C43 C111	4409210062-1	CAP,E,5M,35,85C,100F,35V,M	10/35
D311	2058512150	DIODE,ZN,1W,BM,12V,DO-41,TA	10V 1W	C212 C312	3409210140-1	CAP,EC,5A,VB,100UF,25V,M	100/25
D104 D207	2058512190	DIODE,ZN,1W,BM,15V,DO-41,TA	5032N	C40-42 C49 C71	3409210140-1	CAP,EC,5A,VB,100UF,25V,M	100/25
U101 U201	2118013377	I.C,OP,AMP,N55329,DIP8	503252AN	C73	3409210141-1	CAP,E,5M,5G,85C,100F,25V,M	100/25
U2	2118018000	I.C,PWM CONT,SG3525AN,DIP16	80110	C108 C113 C208	3409222033-1	CAP,E,5M,5G,85C,22UF,16V,M	1/50
U1	2128220089	I.C,DIVER,K210,10,DIP,4P,B	TP21210	C213 C316-318	3409222033-1	CAP,E,5M,5G,85C,22UF,16V,M	22/16
U5	2128460000	I.C,PWM,SW,TP2121,DM8P	CN17F-1	C321	3409223147-1	CAP,E,5M,5G,85C,330UF,25V,M	330/25
PC1-2	2480800980	PHOTO COUPLER,1,CN17F-1,ON 5	1.9UH	C314	3409247071-1	CAP,E,5M,5G,85C,47UF,50V,M	47/50
TH1	2438200960	THERMIST,NTC,20A,100MA,85C,HJ	2mH	C301-306	3409247147-1	CAP,E,5M,5G,85C,47UF,50V,M	47/50
TH101 TH201	2438200970	NCL103F41 4P,NTC,10K	790K 1/2W	C39	3409710003-1	CAP,E,5M,5G,85C,100F,35V,M	10/35
U101 U201	2448009800	COIL,FER,RADIAL,4UH	15 2W	TR4N5	C102 C202 C308	CAP,E,5M,5G,85C,100F,35V,M	10/35
U3-8	2448009800	COIL,FER,TOROID,1.9UH,20A	1.5 2W	TR4N6	C102 C202 C308	CAP,E,5M,5G,85C,100F,35V,M	10/35
U9	2448099510	COIL,FER,TOROID,2.2UH,20A	790K 1/2W	C106 C204	3529150210-1	CAP,CE,TEMP,NPO,15PF,50V,J,RA	15PF
U12	2448099520	COIL,FER,TOROID,2.2UH,20A	15 2W	C120 C220	3409223120-1	CAP,FILIA,POLYESTR,0.022UF,100V	0.022/100V
T2	2828033800	TRANS,PV,SMP5,G,3300	C15	C15	3409223120-1	CAP,FILIA,POLYESTR,0.0033UF,100V	0.0033/100V
T1	2828033900	TRANS,PV,SMP5,G,3300/4300	TP101 TP201	TP101 TP201	422500810-1	TERMINAL,PK,TEST,1P,TA	TP
R1-2	3027503660	RES,MF,750K,1/2W,5%,AX,M	Q123 Q227	Q123 Q227	520110402001	TR,SG,PWP,500MA,300V,AST92,5MT	K3T92
R50 R142 R171	3029150572	RES,MF,1.5,2W,5%,AX,M	Q122 Q226	Q122 Q226	520180402009	TR,SG,PWP,500MA,300V,AST42MT	K3T42MT
R258 R268	3029159572	RES,MF,1.5,2W,5%,AX,M	C24-42 Q1 Q101	C24-42 Q1 Q101	335510405004	TR,SG,PWP,250MA,40V,2N3904S,5OT-23,1A	2N3904S
R153 R182 R269	3029478572	RES,MF,0.47,2W,5%,AX,M	Q104 Q106 Q109	Q111-112 Q128	Q136 Q202,205		
R299	3029478572	RES,MF,0.47,2W,5%,AX,M	Q107-108 Q113	Q126-127 Q135	Q209 Q211-212		
R143-150	3029478572	RES,MF,0.47,2W,5%,AX,M	Q109-103 Q105	Q217 Q230-231	Q239 Q303-304		
R172-179	3029478572	RES,MF,0.47,2W,5%,AX,M	Q104 Q106 Q109	Q111-112 Q128	Q136 Q202,205		
R259-266	3029478572	RES,MF,0.47,2W,5%,AX,M	Q107-108 Q113	Q126-127 Q135	Q209 Q211-212		
R289-296	3029478572	RES,MF,0.47,2W,5%,AX,M	Q109-103 Q105	Q217 Q230-231	Q239 Q303-304		
R241-242	3029478572	RES,MF,0.47,2W,5%,AX,M	Q104 Q106 Q109	Q111-112 Q128	Q136 Q202,205		
R240	3029478572	RES,MF,0.47,2W,5%,AX,M	Q107-108 Q113	Q126-127 Q135	Q209 Q211-212		
R244-355	3029478572	RES,MF,0.47,2W,5%,AX,M	Q109-103 Q105	Q217 Q230-231	Q239 Q303-304		
R5	3039506073	RES,MF,56,3W,5%,AX,N	Q104 Q106 Q109	Q111-112 Q128	Q136 Q202,205		
R349-350	3039801674	RES,MF,680,3W,5%,AX,N	Q107-108 Q113	Q126-127 Q135	Q209 Q211-212		
R51-352	3039801674	RES,MF,820,3W,5%,AX,N	Q109-103 Q105	Q217 Q230-231	Q239 Q303-304		
R132-133	3039822674	RES,MF,8.2K,3W,5%,AX,N	Q104 Q106 Q109	Q111-112 Q128	Q136 Q202,205		
R248-249	3039822674	RES,MF,8.2K,3W,5%,AX,N	Q107-108 Q113	Q126-127 Q135	Q209 Q211-212		
R347	3039822674	RES,MF,8.2K,3W,5%,AX,N	Q109-103 Q105	Q217 Q230-231	Q239 Q303-304		
C49-53 C44-48	3409247189	CAP,E,5M,VB,470UF,63V,M,1A,DO	470/63	Q104 Q106 Q109	Q111-112 Q128		
C54-63	3409247199	CAP,E,5M,VB,470UF,100V,M,1B,40	470/100	Q107-108 Q113	Q126-127 Q135		
C7-12	3419033205	CAP,E,CLAS,3300UF,200V,M,33070	3300/200	Q109-103 Q105	Q217 Q230-231		
C2-3 C13 C39	3549222091	CAP,CE,AC,12/X1,2200PF,250VAC	2200/250	Q104 Q106 Q109	Q111-112 Q128		
C74	3630104500	CAP,FILM,M,POLYESTR,0.1UF,250V	0.1/250V	Q107-108 Q113	Q126-127 Q135		
C70 C72 C116	3630104500	CAP,FILM,M,POLYESTR,0.1UF,250V	0.1/250V	Q109-103 Q105	Q217 Q230-231		
C121 C125 C214	3630104500	CAP,FILM,M,POLYESTR,0.1UF,250V	0.1/250V	Q104 Q106 Q109	Q111-112 Q128		
C221 C225 C315	3630104500	CAP,FILM,M,POLYESTR,0.1UF,250V	0.1/250V	Q107-108 Q113	Q126-127 Q135		
C230	3630104500	CAP,FILM,M,POLYESTR,0.1UF,250V	0.1/250V	Q109-103 Q105	Q217 Q230-231		
C16 C31 C319	3649104600	CAP,FILM,M,POLYESTR,0.1UF,400V,K	0.1/400M	Q104 Q106 Q109	Q111-112 Q128		
C6	36491046251	CAP,FILM,AC,X2,0.1UF,250VAC,K	0.1/250	Q107-108 Q113	Q126-127 Q135		
C47	3649101179	CAP,FILM,MCA,100PF,500V,J	100/500	Q109-103 Q105	Q217 Q230-231		
C17-118	3649331179	CAP,FILM,MCA,330PF,50V,J	330/500	Q104 Q106 Q109	Q111-112 Q128		
C1 C4	3649105028	CAP,FILM,M,POLYPRN,1UF,275V	1/275M	Q107-108 Q113	Q126-127 Q135		
C5	3649474208	CAP,FILM,M,POLYPRN,0.47UF,275V	0.47/275M	Q109-103 Q105	Q217 Q230-231		
C14	3670474600	CAP,FILM,M,POLYPRN,0.47UF,400V,J	0.47/400M	Q104 Q106 Q109	Q111-112 Q128		

Ref	Part No.	Description	Value
D216-218			
D221-222			
D301-305 D312			
D4 D6 D30	322501048001	DIODE MURS160T3 MOTOROLA	MURS160T3
D9 D26-29	322501448001	DIODE 5V, 1A,600V(MURS120T5,DO-214AA,TA	MURS120T5
D306	322620620010	DIODE,ZN,350MW,BM,6.2V,820B4C6	6.2V
D14	322621100010	DIODE,ZN,350MW,BM,10V,820B4C10	10V
R97-R9 R163	330101017231	RES,TF,100,1/10W,5%,2012	100
R193 R202-221			
R270 R279			
R108 R204-205	330101027340	RES,TF,1K,1/8W,5%,3216	1K
R229 R230 R234			
R236			
R106 R206 R228	330101047231	RES,TF,100K,1/10W,5%,2012	100K
R335	330101237231	RES,TF,12K,1/10W,5%,2012	12K
R102-105 R112	330101527231	RES,TF,1.5K,1/10W,5%,2012	1.5K
R118-119 R213			
R224-227			
R232-233			
R338-339			
R120 R235	330101537231	RES,TF,1.5K,1/10W,5%,2012	1.5K
R19-20 R43 R45	330101547340	RES,TF,150K,1/8W,5%,3216	150K
R47 R123 R125			
R184-185 R239			
R241 R202 R204			
R141 R170 R257	330102017231	RES,TF,200,1/10W,5%,2012	200
R287			
R122 R238 R333	330102027231	RES,TF,2K,1/10W,5%,2012	2K
R99 R222 R318	330102037231	RES,TF,20K,1/10W,5%,2012	20K
R221 R227-328			
R332			
R52	330102073231	RES,TF,27K,1/10W,5%,2012	27K
R155-156	330107507231	RES,TF,7.5,1/10W,5%,2012	7.5
R272-273			
R111 R207-209	330107527230	RES,TF,7.5K,1/10W,2012	7.5K
R217			
R36-37 R136	330111045440	RES,TF,100K,1/4W,1%,3216	100K
R139 R164 R195			
R250 R255 R260			
R285 R337			
R30 R100 R127	330113925331	RES,TF,392K,1/8W,1%,2012	392K 1%
R187 R223 R243			
R307 R336 R345			
R23-24 R27-28	330114875441	RES,TF,487K,1/4W,1%,3216	487K 1%
R14-15 R31-32	330121005230	RES,TF,10K,1/10W,1%,2012	10K 1%
R42 R46			
R22 R44 R92-R93	330121752330	RES,TF,12.7K,1/10W,1%,2012	12.7K 1%
R95 R107 R116			
R121 R130 R154			
R201-202			
R211-212			
R234 R237 R246			
R271 R222-323			
R344			
R12	330121506230	RES,TF,15K 1/10W,2012	15K 1%
R41	330122005230	RES,TF,20K,1/10W,1%,2012	20K 1%
R26	330122495331	RES,TF,24.9K,1/8W,1%,2012	24.9K 1%
R183 R194	33012325441	RES,TF,33.2K,1/4W,1%,3216	33.2K 1%
R200-301			
R25 R29 R96	330123925331	RES,TF,39.2K,1/8W,1%,2012	39.2K 1%
R135 R140 R165			
R169 R218 R252			
R256 R281 R286			
R319 R346			
R186 R306	330124755331	RES,TF,47.5K,1/8W,1%,2012	47.5K 1%
R39	330131005230	RES,TF,1K,1/10W,1%,2012	1K 1%
R34	330131745331	RES,TF,1.74K,1/8W,1%,2012	1.74K 1%
R48-R9 R110	330132215331	RES,TF,2.21K,1/8W,1%,2012	2.21K 1%
R138 R168 R191			
R210 R231 R254			
R284 R309 R317			
R229-331			
R94 R129 R245	330133015230	RES,TF,3.01K,1/10W,1%,2012	3.01K 1%
R864			
R13 R21 R40 R91	330134755331	RES,TF,4.75K,1/8W,1%,2012	4.75K 1%

Ref	Part No.	Description	Value
R124 R126 R134			
R166 R188-189			
R203 R240 R242			
R251 R282 R303			
R305			
R115 R128 R190	330135905230	RES,TF,5.9K,1/10W,1%,2012	5.9K 1%
R215 R244 R308			
R245	330139095331	RES,TF,9.09K,1/8W,1%,2012	9.09K 1%
R11 R18	330141005230	RES,TF,100,1/10W,1%,2012	100 1%
R109 R230 R313	330143835331	RES,TF,383,1/8W,1%,2012	383 1%
R316			
R131 R117 R219	330144755230	RES,TF,475,1/10W,1%,2012	475 1%
R236			
R17 R33 R114	330145365331	RES,TF,536,1/8W,1%,2012	536 1%
R214			
R325	330146345440	RES,TF,634F,1/4W,3216	634 1%
R36	330151005230	RES,TF,10,1/10W,1%,2012	10 1%
R34 R51	330153925441	RES,TF,39.2,1/4W,1%,3216	39.2 1%
R311-312			
R314-315			
R131 R192 R247	330154755230	RES,TF,47.5,1/10W,1%,2012	47.5 1%
R310			
R9-10 R35	330301005440	RES,MF,10,1/4W,1%,3216,TA	10 1%
R16	330337875330	RES,MF,7.87K 1/2	7.87K
R137 R167 R253	330342745330	RES,MF,274,1/8W,1%,2012,TA	274 1%
R283			
C107 C203	335101004330	CAP,CE,MOHO,COG,10PF,50V,J,2012	100P
C101 C109 C201	335101014331	CAP,CE,MOHO,COG,100PF,50V,J,2012	1000P
C209			
C29 C45 C309	335101024344	CAP,CE,MOHO,X7R,1000PF,50V,5%	1000uF
C311 C313			
C19-23 C26 C38	335101044344	CAP,CE,MOHO,X7R,0.1UF,50V,K,3216	0.1U
C44 C104 C117			
C12 C137 C207			
C127 C222 C227			
C307			
C35-35 C110	335102725434	CAP,CE,MOHO,X7R,2700PF,100V	2700P
C115 C124 C210			
C215 C224	335104704331	CAP,CE,MOHO,COG,47PF,50V,J,2012	47P
C112 C126 C128			
C211 C226 C228			
C25 C27-28	335104714344	CAP,CE,MOHO,COG,470PF,50V,J,3216	470P
C36-37 C48 C105			
C119 C205 C219			
C118 C218	335106815331	CAP,CE,MOHO,COG,680PF,50V,J,2012	680P
VR BD (4000006610)			
ZD401-402	2058502024	DIODE,ZN,500MW,BM,2-4V,DO-35,T	2.4BM
LD401 LD407	2300030100	LED,RND 3.1MM,RED,DF,1U,ST2.5	1U,1-CHG
LD402-408 LD408	2300032100	LED,RND 3.1MM,GRN,DF,1U,ST2.5	1U,1-CHG
VR401-402	3228064600	VR,BOT,VR,1U,11.5,10K,8,VR164DO-41-15F	100K
AN402	4355429120	CON ASSY,8B,14P,JDCC,54,DI2,54,480MM	ASSY-14P
LM1-8	8545993340	LED LIMITER	LED LIMITER
C402 C404	3409210023-T	CAP,E,5M,3E,BSC,10UF,50V,M	10/50
Q401-402	370010403004	TR,SG,PNP,200MA,40V,ZN3906S,SOT-23,1A	ZN3906S
Q404-405			
Q407-408			
Q403 Q406	320506448002	TR,SG,NPN,200MA,40V,JMB13904,SOT-23,1A	ZN3904
Q401-404	322400500001	DIODE,SW,0.2A,200V,BA521,SOT-23	BA521
R402 R405	330101027340	RES,TF,1K,1/8W,5%,3216	1K
R401 R403-404	330134755331	RES,TF,4.75K,1/8W,1%,2012	4.75K 1%
R406			
C401 C403	335104714344	CAP,CE,MOHO,COG,470PF,50V,J,3216	470P
OUTPUT BD (4000006620)			
C601-602	3630104500	CAP,FIL,M,M-POLYESTR,0.1UF,250V	0.1/250V(M)
J603-604	4430001700	JACK,SPEAKER,1U,4P,ST,FC60112	4P
INPUT BD (4000006900)			
AN501	4355429008	CON ASSY,8B,14P,JDCC,54,DI2,54,170MM	ASSY-14P
J402 J404	4438192910	JACK,PHONE,1U,3P,ST	PHONE
J401 J4-403	4438193810	JACK,PHONE,1U,3P,ST	PHONE
SW501 SW503	4618499310	SW,SLIDE,584017.0403-5.3T-FN	584017
SW506			
SW504-505	4628991710	SW,PUSH,VER,DPTD,N5,1U,112.5	SPCC122SC01

Ref	Part No.	Description	Value
BK301	6505955520	PCB BKT MX-400	BRACKET
C501-522	3409210071-T	CAP,E,5M,5G,BSC,10UF,50V,M	10/50
C503 C508 C511	3409847041-T	CAP,E,NP,NP,BSC,47UF,25V,M	47/25 NP
C516			
C505 C513	3609483120-T	CAP,FIL,M,POLYESTR,0.068UF,100V	0.068/100
C507 C515	3639224188-T	CAP,FIL,M,POLYESTR,0.22UF,63V	0.22/63(M)
C506 C514	3639473188-T	CAP,FIL,M,M-POLYESTR,0.047UF,63V	0.047/63(M)
U501-504	331101087701	IC,COP,AMP,NE5532A,SOP8	NE5532A
U501-504	322400500001	DIODE,SW,0.2A,200V,BA521,SOT-23	BA521
R531-532	330100007230	RES,TF,0.1/10W,5%,2012	0
R505 R518	330101037231	RES,TF,10K,1/10W,5%,2012	10K
R506 R519	330101047231	RES,TF,100K,1/10W,5%,2012	100K
R512 R525	330102037231	RES,TF,20K,1/10W,5%,2012	20K
R527-530	330107507231	RES,TF,7.5,1/10W,5%,2012	7.5
R507 R513 R520	330107527230	RES,TF,7.5K,1/10W,2012	7.5K
R526			
R508 R521	330121375230	RES,TF,13.7K,1/10W,1%,2012	13.7K 1%
R511 R524	330124755331	RES,TF,47.5K,1/8W,1%,2012	47.5K 1%
R509 R522	330133655230	RES,TF,3.65K,1/10W,1%,2012	3.65K 1%
R510 R523	330134755331	RES,TF,4.75K,1/8W,1%,2012	4.75K 1%
R501-504	330135605230	RES,TF,5.6K,1/10W,1%,2012	5.6K 1%
R514-517			
C501-502	335101014331	CAP,CE,MOHO,COG,100PF,50V,J,2012	100P
C509-510			
C523-524	335101045331	CAP,CE,MOHO,X7R,0.1UF,50V,J,2012	0.1U
C504 C512	335102204339	CAP,CE,MOHO,COG,22PF,50V,J,2012	22P
C517-520	335104714330	CAP,CE,MOHO,COG,470PF,50V,J,2012	470P
ASSY			
AC CORD	4308997410	AC POWER CORD (16A/250V)	230VAC
AC CORD	4308997610	AC POWER CORD (15A/250V)	120VAC
AC INLET	4448597210	AC INLET 3P 2.0T 16A/20A 4793	
CONNECTOR	4355429504	CON ASSY,25,1P,R5,3,250T08,110MM	
CONNECTOR	4355429510	CON ASSY,25,1P,R5,3,250T08,210MM	
CONNECTOR	4355810803	CON ASSY,25,1P,250T08,5T4,2,100MM	
FAN 1,2	7308997510	DC FAN(3110KL05W-870-F04)	
SW	4648099810	SW,POWER,18A,230V,A11-80-44-618-SC2-D	230VAC
SW	4648099920	SW,POWER,A11-80-44-635-SC2-C	120VAC

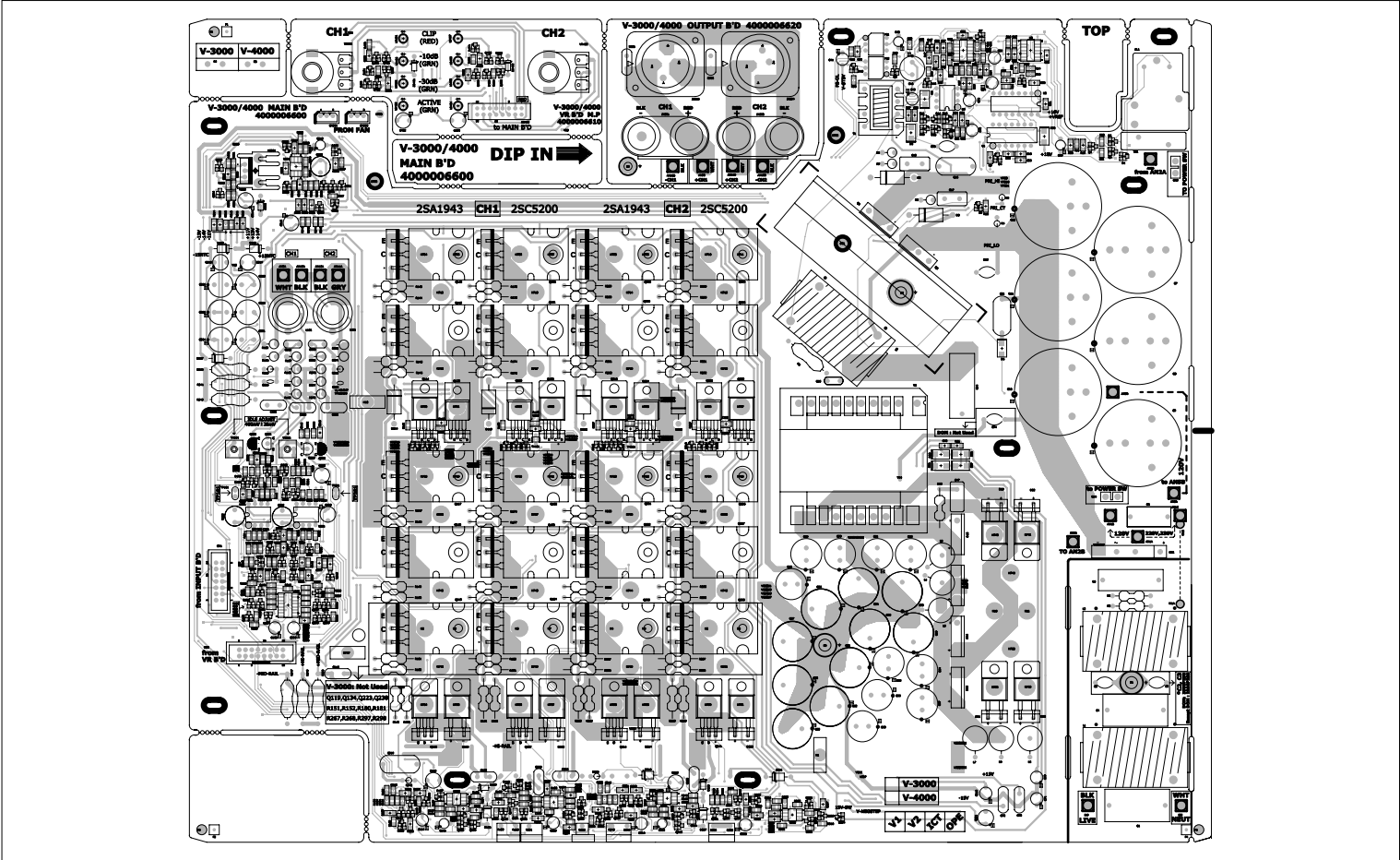
ELECTRICAL PARTS LIST (V-4000)

Ref.	Part No.	Description	Value	Ref.	Part No.	Description	Value	
AMP BD (400006600)								
E4.5	1508400501	JUMP WIRE 0.5/50MM	JUMPER	AN11	AN12	CON ASSY,DS,2P,P2.6,510MM	ASSY	
Q305	2028106960	TR,PW,NPN,3A,120V,TP22C	TP22C	AN1	4355428921	CON ASSY,DS,1P,P2.6,40MM	ASSY	
Q115-119	2028107118	TR,PW,NPN,15A,230V,25A1943,TO-3PH	25A1943	AN5	4355429303	CON ASSY,DS,1P,P2.6,P2.6,100MM	ASSY	
Q219-223				AN9	AN10	4355714121	CON ASSY,DS,2P,P2.6,P2.6,510MM	ASSY
Q114 Q218	2028107995	TR,PW,NPN,8A,250V,MJE15033,TO-220	MJE15033	J19	4355791712	CON ASSY,DS,1P,250T08,P2.6,110MM	ASSY	
Q125-229	2028110941	TR,PW,NPN,1A,230V,25A1837	25A1837	J20	4355833204	CON ASSY,DS,1P,250T08,P2.6,110MM	ASSY	
Q130-134	2028407122	TR,PW,NPN,15A,230V,25C3200,TO-3PH	25C3200	CN1	4428592513	CON WAFER,BOM,M,14P,2/ST	PC1635-14P	
Q234-238				CN2	4428592516	CON WAFER,BOM,M,16P,2/ST	PC1635-16P	
Q239	2028407995	TR,PW,NPN,8A,250V,MJE15032,TO-220	MJE15032	CN301-302	4428595003	CON WAFER,BOM,M,3P,ST	LW5267-03P	
Q120 Q224	2028410884	TR,PW,NPN,1A,230V,25C4793,TO-220S	MJE15033	CN3.4	4465998210	TERMINAL,ZCSOICB TAB	R229 R320 R324	
Q130 Q137 Q214	2048247900	TR,IGBT,IF,N27A,600V,REG4PC50	REG4PC50	RL1	5028080981	RELAY,AZ2151,I,C-24DC,ZETTLER	DC 24V	
Q241				HS301	7525299110	HEAT SHINK200MM	REG TR	
D114 D119 D215	2058110106	DIODE,RE,3A,400V,1N5404,DO-201A	1N5404	LIU101 LIU201	85445993380	LED LIMITER		
D219				Q124 Q228	2008005998-T	TR,SG,NPN,200MA,40V,ZN3906	2N3906	
B01	2058119110	DIODE,8R,50A,600V,RBV5006,RBV25	RBV5006	Q121 Q225	2008405998-T	TR,SG,NPN,200MA,40V,ZN3904	2N3904	
D20-23	2058300995	DIODE,RE,1.5A,400V,MUR1540,TO-2	MUR 1540	R13 R1216	30221164455-T	RES,MF,16.5K,1W,1/8W,RA,TA	16.5K 1W 1%	
D11 D120 D21	2058300996	DIODE,RE,1.5A,200V,MUR1520,TO-220AC	MUR 1520	R34	3029303575-T	RES,MF,30K,2W,5/8W,RA,TA	30K 2W	
D220				R158 R160-162	3039150575-T	RES,MF,15.2W,5/8W,RA,TA	15.2W	
D18-19 D24-25	2058499700	DIODE,5W,30A,400V,DSEF90-04A,TO-247AD	DSEF90-04A	R352	3039151575-T	RES,MF,150.2W,5/8W,RA,TA	150.2W	
D2-3	2058499800	DIODE,5W,4A,400V,MUR440,DO-201AD	MUR440	R348	3039159575-T	RES,MF,1.5,2W,5/8W,RA,TA	1.5 2W	
D105 D206	2058502039	DIODE,ZN,500MM,BM,3.9V,DO-35,T	3.9BM	R6-8 R157 R159	3039569575-T	RES,MF,5.2W,5/8W,RA,TA	5.6 2W	
D313	2058502240	DIODE,ZN,500MM,BM,2A,DO-35,TA	248MA	R200 R275				
D207-310	2058510150	DIODE,ZN,11V,BM,12V,DO-41,TA	158MA	WR101 WR201	3248550120-T	RES,SEMI,FT-43,TPR900	500	
D311	2058512150	DIODE,ZN,11V,BM,12V,DO-41,TA	12V 1W	C24	3409210039-T	CAP,EC,5MA,10V,16V,5X11,T	100/16	
D106 D207	2118013377	I.C. OP AMP,HESS39,D9B	5532N	C124 C312	3409210062-T	CAP,EC,5MA,5.85C,22UF,35V,M	100/35	
U101 U201	2118013377	I.C. OP AMP,HESS39,D9B	5532N	C40-42 C49 C71	3409210140-T	CAP,EC,5MA,10V,100UF,35V,M	100/25	
U2	2118031800	I.C. PWM CONT,SG3255AN,D9P16	SG3255AN	C73				
U1	2128220089	I.C. DRIVER,RJ2110,D9P14,R	RJ2110	C108 C113 C208	3409210141-T	CAP,EC,5MA,10V,100UF,35V,M	100/25	
U5	2128460000	I.C. PWM SW,TPR210,D9P08	TPR210	C213 C316-318				
PC-2	2408009000	PHOTO COUPLER,1LCO,N17F-1,ONS	CH17F-1	C204 C310	3409210971-T	CAP,EC,5MA,5.85C,22UF,35V,M	1/50	
TH1	2438200960	TERMINIST,NTC,20A,100CM,BSC,PU	NTC-10	C103 C206 C310	3409220333-T	CAP,EC,5MA,5.85C,22UF,35V,M	22/16	
TH101 TH201	2438200970	KCL108F41,4FL,NTC,10K	KCL103F	C114 C123 C214	3409220333-T	CAP,EC,5MA,5.85C,22UF,35V,M	1/50	
L101 L201	2648098800	COIL,AIR,2.2UH	2.2 uH	C223	3409247071-T	CAP,EC,5MA,5.85C,47UF,50V,M	47/50	
L3-8	2648098800	COIL,FERRADIAL,6UH	6uH	C314	3409247071-T	CAP,EC,5MA,5.85C,47UF,50V,M	47/50	
L9	26484899510	COIL,FERR TOROID,1.1RUM,20A	1.1 RUM	C44 C301-306	3409247147-T	CAP,EC,5MA,5.85C,47UF,50V,M	47/50	
L1-2	26484899520	COIL,FERR TOROID,2.2MH,20A	2uH	C32	3409710070-T	CAP,E,NPN,NP,BSC,47UF,25V,M	10/50 NP	
T2	2828053700	TRANS,PV,SMP5,Q-4300	TRANS	C409B47041-T	3409847041-T	CAP,E,NPN,NP,BSC,47UF,25V,M	47/25 NP	
T1	2828053700	TRANS,PV,SMP5,EE,Q-3300/4300	TRANS	C106 C204	3529150210-T	CAP,EC,10M,NPO,150V,50V,J,KA	150	
R1-2	3027303640	RES,MF,750K,1/2W,5/8W,AX,M	750K 1/2W	C120 C202	3609233120-T	CAP,FILM,POLYESTER,0.0025UF,100V	0.0025/1000V	
R9 R142 R171	3029150572	RES,MF,15.2W,5/8W,AX,M	15.2W	C15	3609332120-T	CAP,FILM,POLYESTER,0.0033UF,100V	0.0033/1000V	
R258 R288				TP101 TP201	4225000810-T	TERMINAL,PIN,TEST,1P,TA	TP	
R153 R182 R249	3029159572	RES,MF,1.5,2W,5/8W,AX,M	1.5 2W	Q123 Q227	520110402001	TR,SG,NPN,500MA,300V,K5192,SOT	K5192	
R299				Q122 Q226	520110402009	TR,SG,NPN,500MA,300V,K5192,42MFT	K5142MFT	
R43 R152	3029478572	RES,MF,0.47,2W,5/8W,AX,M	0.47 2W	Q24 Q27 Q101	520510405004	TR,SG,NPN,200MA,40V,ZN3906S,SOT-23,TA	ZN3906S	
R172-181				Q104 Q106 Q109				
R259-268				Q111-112 Q128				
R269-298				Q136 Q202-205				
R341-342	30329701960	RES,MF,2.7K,3W,5/8W,AX,P	2.7K 3W	Q208 Q210 Q215				
R340	3039331673	RES,MF,330.3W,5/8W,AX,N	330 3W	Q215-216 Q232				
R354-355	3039471674	RES,MF,470.3W,5/8W,AX,P	470 3W	Q240 Q301-302				
R5	3039506073	RES,MF,36.3W,5/8W,AX,N	36 3W	Q3-6 Q8	320560448002	TR,SG,NPN,200MA,40V,JMBT3904,SOT-23,TA	ZN3904	
R349-350	3039681674	RES,MF,680.3W,5/8W,AX,P	680 3W	Q102-103 Q105				
R351-352	3039821674	RES,MF,820.3W,5/8W,AX,N	820 3W	Q107-108 Q113				
R132-133	3039822674	RES,MF,8.2K,3W,5/8W,AX,N	8.2K 3W	Q126-127 Q135				
R248-249				Q201 Q202 Q203				
R247				Q209 Q211-212				
C49-53 C44-48	3409247189	CAP,ES,MW,470UF,63V,M,16X20	470/63	Q217 Q230-231				
C54-63	3409247199	CAP,EC,5MA,470UF,100V,M,18X40	470/100	Q239 Q303-304				
C7-10	3419027205	CAP,EC,1A,5.270UF,200V,M,35X70	2700/200	U4	521101142601	I.C. OP AMP,LM339,SOP14	LM339MX	
C2-3 C13 C39	3549222091	CAP,EC,1A,121X,12200PF,250VAC	2200/250	U102	521101167701	I.C. OP AMP,LM311,300MA,DMP16	LM311300MA	
C74	3630104500	CAP,FILM,M,POLYESTER,0.1UF,250V	0.1/250(M)	U301	521102084801	I.C. COMP,LM935,SOP8	LM935D	
C70 C72 C116				U103-104	521102087701	I.C. COMP,LM311,DMP8	LM311D	
C221 C225 C315				U202-203				
C320				U5	521263142601	I.C. TIMER,LM555CM,SOP14	LM555CM	
C16 C31 C319	3639104600	CAP,FILM,M,POLYESTER,0.1UF,400V,K	0.1/400(M)	D1 D4.5 D7	522400500001	DIODE,5W,2A,200V,BA521,SOT-23	BA521	
C6	3649104251	CAP,FILM,ACX2.0,1UF,250VAC,K	0.1/250	D10-13 D15-17				
C47	3649101179	CAP,FILM,ACX2.0,1UF,500V,J	100/500	D101-104				
C17-118	3649933179	CAP,FILM,ACX3.039F,63V,J	330/950	D107-112				
C1 C4	3649105208	CAP,FILM,M,POLYPPH,1UF,275V	1/275(M)	D115-118 D121				
C5	3649474208	CAP,FILM,M,POLYPPH,0.47UF,275V	0.47/275(M)	D201-205				
C14	3670474600	CAP,FILM,M,POLYPPH,0.47UF,400V,J	0.47/400(M)	D208-213				
				D216-218				

Ref.	Part No.	Description	Value	Ref.	Part No.	Description	Value
D221-222				R282			
D301-305 D312				R13 R21 R40 R91	330134755331	RES,TF,4.75K,1/8W,1%,2012	4.75K 1%
D6 D8 D30	522501048001	DIODE,MURS160T3,MOTOROLA	MURS160T3	R124 R126			
D9 D26-29	522501448001	DIODE,5W,1A,600V,MURS120T3,DO-214AA,TA	MURS120T3	R188-189 R203			
D306	522502602010	DIODE,ZN,350MMW,BM,4.2V,808AC6	6.2V	R240 R242 R303			
D14	522621100010	DIODE,ZN,350MMW,BM,10V,808AC10	10V	R305			
R97-98 R163	530101017231	RES,TF,100,1/10W,5%,2012	100	R115 R128 R190	330135905230	RES,TF,5.9K,1/10W,1%,2012	5.9K 1%
R192 R220-221				R215 R244 R308			
R220 R279				R309			
R108 R204-205	530101027340	RES,TF,1K,1/8W,5%,3216	1K	R11 R18	330139095331	RES,TF,9.09K,1/8W,1%,2012	9.09K 1%
R229 R320 R324				R109 R220 R313	330140052030	RES,TF,100,1/10W,1%,2012	100 1%
R326				R316	330143835331	RES,TF,383,1/8W,1%,2012	383 1%
R106 R206 R228	530101047231	RES,TF,100K,1/10W,5%,2012	100K	R236	330144755230	RES,TF,475,1/10W,1%,2012	475 1%
R335	530101237231	RES,TF,12K,1/10W,5%,2012	12K	R17 R33 R114	330145365331	RES,TF,536,1/8W,1%,2012	536 1%
R102-105 R112	530101527231	RES,TF,1.5K,1/10W,5%,2012	1.5K	R214			
R224-227				R225	330146345440	RES,TF,634F,1/4W,3216	634 1%
R232-233				R38	330151005230	RES,TF,10,1/10W,1%,2012	10 1%
R338-339				R34 R51	330153925441	RES,TF,39.2,1/4W,1%,3216	39.2 1%
R120 R235	530101537231	RES,TF,15K,1/10W,5%,2012	15K	R311-312			
R19-20 R43 R45	530101547340	RES,TF,150K,1/8W,5%,3216	150K	R214 R315			
R47 R123 R215				R131 R192 R247	330154755230	RES,TF,47.5,1/10W,1%,2012	47.5 1%
R136 R164				R310			
R184-185 R239				R9-10 R35	330201005440	RES,MF,10,1/4W,1%,3216,TA	10 1%
R241 R250 R280				R16	330237835330	RES,MF,7.87K,1/2012	7.87K
R302 R304				R131 R167 R253	330242745330	RES,MF,274,1/8W,1%,2012,TA	274 1%
R141 R170 R257	530102017231	RES,TF,200,1/10W,5%,2012	200	R283			
R287				C107 C203	535101004330	CAP,CE,MONO,COG,10PF,50V,J,2012	10PF
R122 R238 R333	530102027231	RES,TF,2K,1/10W,5%,2012	2K	C101 C109 C201	535101014331	CAP,CE,MONO,COG,100PF,50V,J,2012	100PF
R99 R222 R318	530102037231	RES,TF,20K,1/10W,5%,2012	20K	C209	535101024344	CAP,CE,MONO,X7R,1000PF,50V,5%	1000PF
R221 R227 R328				C29 C45 C309	535101024344	CAP,CE,MONO,X7R,1000PF,50V,5%	1000PF
R332				C31 C313			
R155-156	530107507231	RES,TF,75,1/10W,5%,2012	75	C19-23 C26 C38	535101044344	CAP,CE,MONO,X7R,0.1UF,50V,K,3216	0.1U
R272-273				C44 C104 C117			
R217	530107527230	RES,TF,75,1/10W,5%,2012	75	C122 C127 C207			
R36-37 R139	530111045440	RES,TF,100K,1/4W,1%,3216	100K 1%	C307			
R195 R255 R285				C33-35 C110	535102755434	CAP,CE,MONO,X7R,2700PF,100V	2700PF
R337				C115 C124 C210			
R30 R100 R127	530113925331	RES,TF,392K,1/8W,1%,2012	392K 1%	C12 C26 C28	535104704331	CAP,CE,MONO,COG,47PF,50V,J,2012	47PF
R187 R223 R243				C21 C29 C228			
R307 R336 R345				C25 C27-28	535104714344	CAP,CE,MONO,COG,470PF,50V,J,3216	470PF
R23-24 R27-28	530114875441	RES,TF,487K,1/4W,1%,3216	487K 1%	C36-37 C48 C105			
R4-15 R31-32	530120059230	RES,TF,10K,1/10W,1%,2012	10K 1%	C119 C205 C219			
R42 R46				C118 C218	535108815331	CAP,CE,MONO,COG,680PF,50V,J,2012	680PF
R22 R44 R99-93	530121752930	RES,TF,12.7K,1/10W,1%,2012	12.7K 1%	VR BD (4000006610)			
R95 R107 R116				ZD401-402	2058502024	DIODE,ZN,500MMW,BM,2.4V,DO-35,T	2.4BM
R121 R130 R140				LD401 LD407	23003030100	LED,RND,3.1MM,RSD,DF,1U,572.5	1U,1CH-CE
R154 R169				LD402-404 LD408	23003032100	LED,RND,3.1MM,GRN,DF,1U,572.5	1U,1CH-CE
R201-202				VR40			
R211-212				VR40	3228966640	DIODE,7V,1U,15,10K,R91,AD40-41,15F	1008
R232 R237 R246				VR40	4355429120	DIODE,5V,1U,15,10K,R91,AD40-41,15F	1008
R232 R237 R246				VR40	4355429120	DIODE,5V,1U,15,10K,R91,AD40-41,15F	1008
R232 R237 R246				VR40	4355429120	DIODE,5V,1U,15,10K,R91,AD40-41,15F	1008
R232 R237 R246				VR40	4355429120	DIODE,5V,1U,15,10K,R91,AD40-41,15F	1008
R232 R237 R246				VR40	4355429120	DIODE,5V,1U,15,10K,R91,AD40-41,15F	1008
R232 R237 R246				VR40	4355429120	DIODE,5V,1U,15,10K,R91,AD40-41,15F	1008
R232 R237 R246				VR40	4355429120	DIODE,5V,1U,15,10K,R91,AD40-41,15F	1008
R232 R237 R246				VR40	4355429120	DIODE,5V,1U,15,10K,R91,AD40-41,15F	1008
R232 R237 R246				VR40	4355429120	DIODE,5V,1U,15,10K,R91,AD40-41,15F	1008
R232 R237 R246				VR40	4355429120	DIODE,5V,1U,15,10K,R91,AD40-41,15F	1008
R232 R237 R246				VR40	4355429120	DIODE,5V,1U,15,10K,R91,AD40-41,15F	1008
R232 R237 R246				VR40	4355429120	DIODE,5V,1U,15,10K,R91,AD40-41,15F	1008
R232 R237 R246				VR40	4355429120	DIODE,5V,1U,15,10K,R91,AD40-41,15F	1008
R232 R237 R246				VR40	4355429120	DIODE,5V,1U,15,10K,R91,AD40-41,15F	1008
R232 R237 R246				VR40	4355429120	DIODE,5V,1U,15,10K,R91,AD40-41,15F	1008
R232 R237 R246				VR40	4355429120	DIODE,5V,1U,15,10K,R91,AD40-41,15F	1008
R232 R237 R246				VR40	4355429120	DIODE,5V,1U,15,10K,R91,AD40-41,15F	1008
R232 R237 R246				VR40	4355429120	DIODE,5V,1U,15,10K,R91,AD40-41,15F	1008
R232 R237 R246				VR40	4355429120	DIODE,5V,1U,15,10K,R91,AD40-41,15F	1008
R232 R237 R246				VR40	4355429120	DIODE,5V,1U,15,10K,R91,AD40-41,15F	1008
R232 R237 R246				VR40	4355429120	DIODE,5V,1U,15,10K,R91,AD40-41,15F	1008
R232 R237 R246				VR40	4355429120	DIODE,5V,1U,15,10K,R91,AD40-41,15F	1008
R232 R237 R246				VR40	4355429120	DIODE,5V,1U,15,10K,R91,AD40-41,15F	1008
R232 R237 R246				VR40	4355429120	DIODE,5V,1U,15,10K,R91,AD40-41,15F	1008
R232 R237 R246				VR40	4355429120	DIODE,5V,1U,15,10K,R91,AD40-41,15F	1008
R232 R237 R246				VR40	4355429120	DIODE,5V,1U,15,10K,R91,AD40-41,15F	1008
R232 R237 R246				VR40	4355429120	DIODE,5V,1U,15,10K,R91,AD40-41,15F	1008
R232 R237 R246				VR40	4355429120	DIODE,5V,1U,15,10K,R91,AD40-41,15F	1008
R232 R237 R246				VR40	4355429120	DIODE,5V,1U,15,10K,R91,AD40-41,15F	1008
R232 R237 R246				VR40	4355429120	DIODE,5V,1U,15,10K,R91,AD40-41,15F	1008
R232 R237 R246				VR40	4355429120	DIODE,5V,1U,15,10K,R91,AD40-41,15F	1008
R232 R237 R246				VR40	4355429120	DIODE,5V,1U,15,10K,R91,AD40-41,15F	1008
R232 R237 R246				VR40	4355429120	DIODE,5V,1U,15,10K,R91,AD40-41,15F	1008
R232 R237 R246				VR40	4355429120	DIODE,5V,1U,15,10K,R91,AD40-41,15F	1008
R232 R237 R246				VR40	4355429120	DIODE,5V,1U,15,10K,R91,AD40-41,15F	1008
R232 R237 R246				VR40	4355429120	DIODE,5V,1U,15,10K,R91,AD40-41,15F	1008
R232 R237 R246				VR40	4355429120	DIODE,5V,1U,15,10K,R91,AD40-41,15F	1008
R232 R237 R246				VR40	4355429120	DIODE,5V,1U,15,10K,R91,AD40-41,15F	1008
R232 R237 R246				VR40	4355429120	DIODE,5V,1U,15,10K,R91,AD40-41,15F	1008
R232 R237 R246				VR40	4355429120	DIODE,5V,1U,15,10K,R91,AD40-41,15F	1008
R232 R237 R246				VR40	4355429120	DIODE,5V,1U,15,10K,R91,AD40-41,15F	1008
R232 R237 R246				VR40	4355429120	DIODE,5V,1U,15,10K,R91,AD40-41,15F	1008
R232 R237 R246				VR40	4355429120	DIODE,5V,1U,15,10K,R91,AD40-41,15F	1008
R232 R237 R246				VR40	4355429120	DIODE,5V,1U,15,10K,R91,AD40-41,15F	1008
R232 R237 R246				VR40	4355429120	DIODE,5V,1U,15,10K,R91,AD40-41,15F	1008
R232 R237 R246				VR40	4355429120	DIODE,5V,1U,15,10K,R91,AD40-41,15F	1008
R232 R237 R246				VR40	4355429120	DIODE,5V,1U,15,10K,R91,AD40-41,15F	1008
R232 R237 R246				VR40	4355429120	DIODE,5V,1U,15,10K,R91,AD40-41,15F	1008
R232 R237 R246				VR40	4355429120	DIODE,5V,1U,15,10K,R91,AD40-41,15F	1008
R232 R237 R246				VR40	4355429120	DIODE,5V,1U,15,10K,R91,AD40-41,15F	1008
R232 R237 R246				VR4			

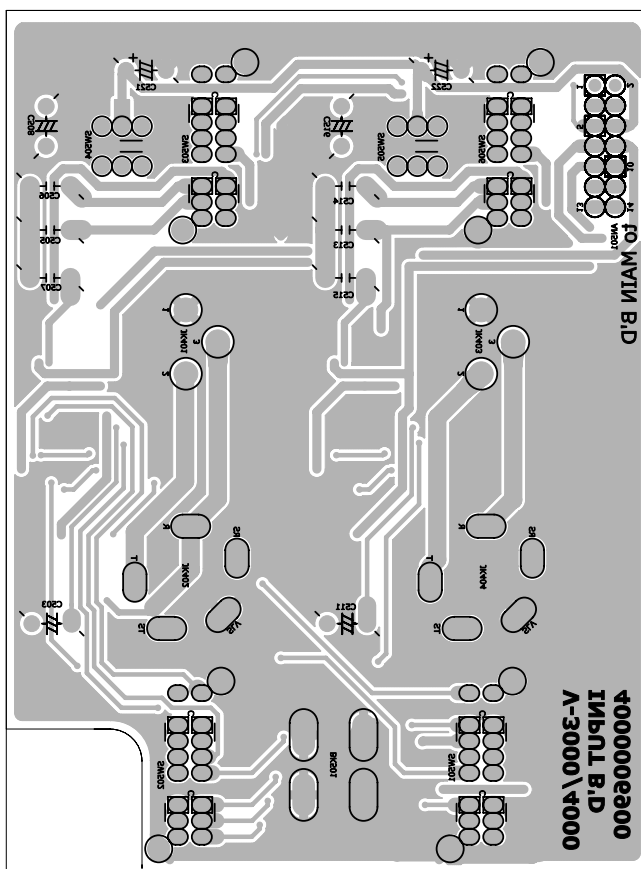
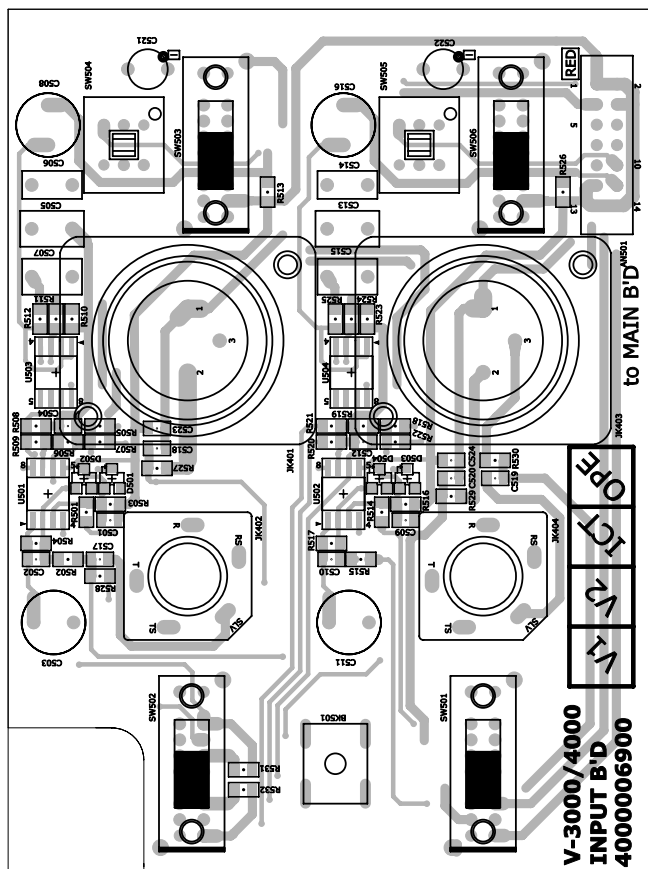
Ref.	Part No.	Description	Value
SW504-505	4628991710	SW,PUSH,VER,DPDT,NS,1U,112.5	SPEC122SC011
BK501	6505955520	PCB BKT MX-400	BRACKET
CS21-522	3409210071-1	CAP,E,5M,5G,85C,10UF,50V/M	10/50
CS53 CS58 CS11	3409847041-1	CAP,E,NP,NP,85C,47UF,25V/M	47/25 NP
CS16			
CS05 CS13	3609683120-1	CAP,FLUX,POLYESTR,0.068UF,100V	0.068/100
CS07 CS15	3639224188-1	CAP,FLUX,M,POLYESTR,0.22UF,63V	0.22/63(M)
CS06 CS14	3639473188-1	CAP,FLUX,M,POLYESTR,0.047UF,63V	0.047/63(M)
US01-504	521101087701	IC,OP AMP,NES532A,SCPB	NES532A
D501-504	522400500001	DIODE,SW,D,2A,200V,BA521,SOT-23	BA521
RS31-432	530100007230	RES,TF,0.1/10W,5%(),2012	0
RS05 RS18	530101037231	RES,TF,10K,1/10W,5%,2012	10K
RS06 RS19	530101047231	RES,TF,100K,1/10W,5%,2012	100K
RS12 RS25	530102037231	RES,TF,20K,1/10W,5%,2012	20K
RS27-530	530107507231	RES,TF,75,1/10W,5%,2012	75
RS07 RS13 RS20	530107527230	RES,TF,7.5K,1/10W,2012	7.5K
RS26			
RS08 RS21	530121375230	RES,TF,13.7K,1/10W,1%,2012	13.7K 1%
RS11 RS24	530124755331	RES,TF,47.5K,1/8W,1%,2012	47.5K 1%
RS09 RS22	53013365230	RES,TF,3.65K,1/10W,1%,2012	3.65K 1%
RS10 RS23	530134755331	RES,TF,4.75K,1/8W,1%,2012	4.75K 1%
RS01-504	530135605230	RES,TF,5.6K,1/10W,1%,2012	5.6K 1%
RS14-517			
CS01-502	535101014331	CAP,CE,MONO,COG,100PF,50V,1,2012	100P
CS09-510			
CS23-524	535101045331	CAP,CE,MONO,X7R,0.1UF,50V,2,2012	0.1U
CS04 CS12	535102204339	CAP,CE,MONO,COG,22PF,50V,1,2012	22P
CS17-520	535104714330	CAP,CE,MONO,COG,470PF,50V,1,2012	470P
ASSY			
AC CORD	4308997410	AC POWER CORD (16A/250V)	230VAC
AC CORD	4308997610	AC POWER CORD (15A/125V)	120VAC
AC INLET	4448597210	AC INLET 3P 2.0T 16A/20A 4793	
CONNECTOR	4355429504	CON ASSY,DS,1P,R5,3,250T08,110MM	
CONNECTOR	4355429510	CON ASSY,DS,1P,R5,3,250T08,210MM	
CONNECTOR	4355410803	CON ASSY,DS,1P,250T08,ST4,2,100MM	
FAN 1,2	7308997510	DC FAN(Q110KL-05W-870-F04)	
SW	4648099810	SW,POWER,18A,250V,A11-80-44-618-5C2	230VAC
SW	4648099920	SW,POWER,A11-80-44-635-5C2-C	120VAC

TOP AND BOTTOM VIEW OF P.C.BOARD

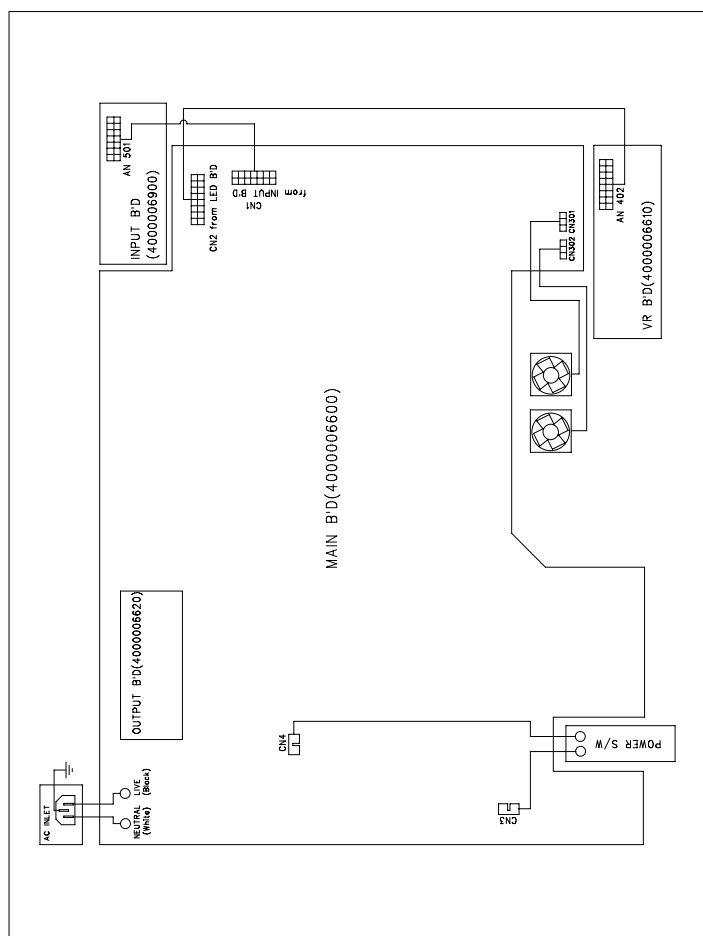






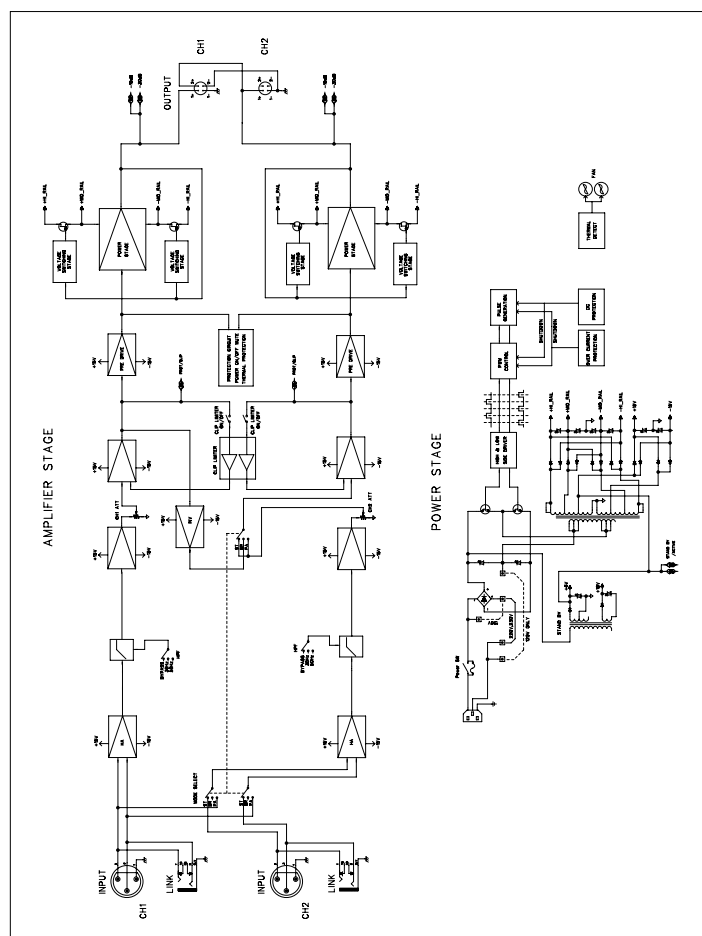


## WIRING DIAGRAM



15

## BLOCK DIAGRAM



16

## SCHEMATIC DIAGRAM

