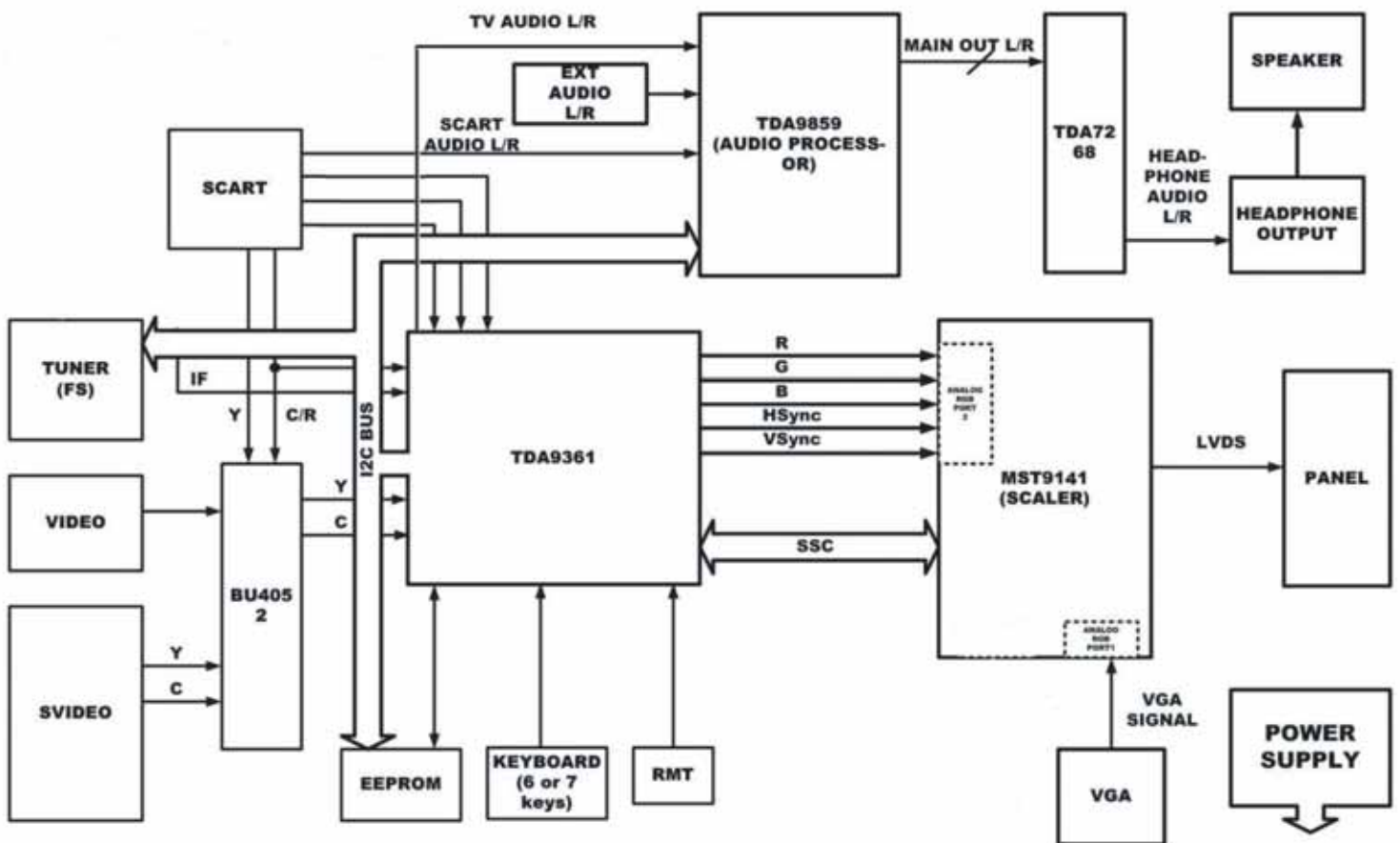


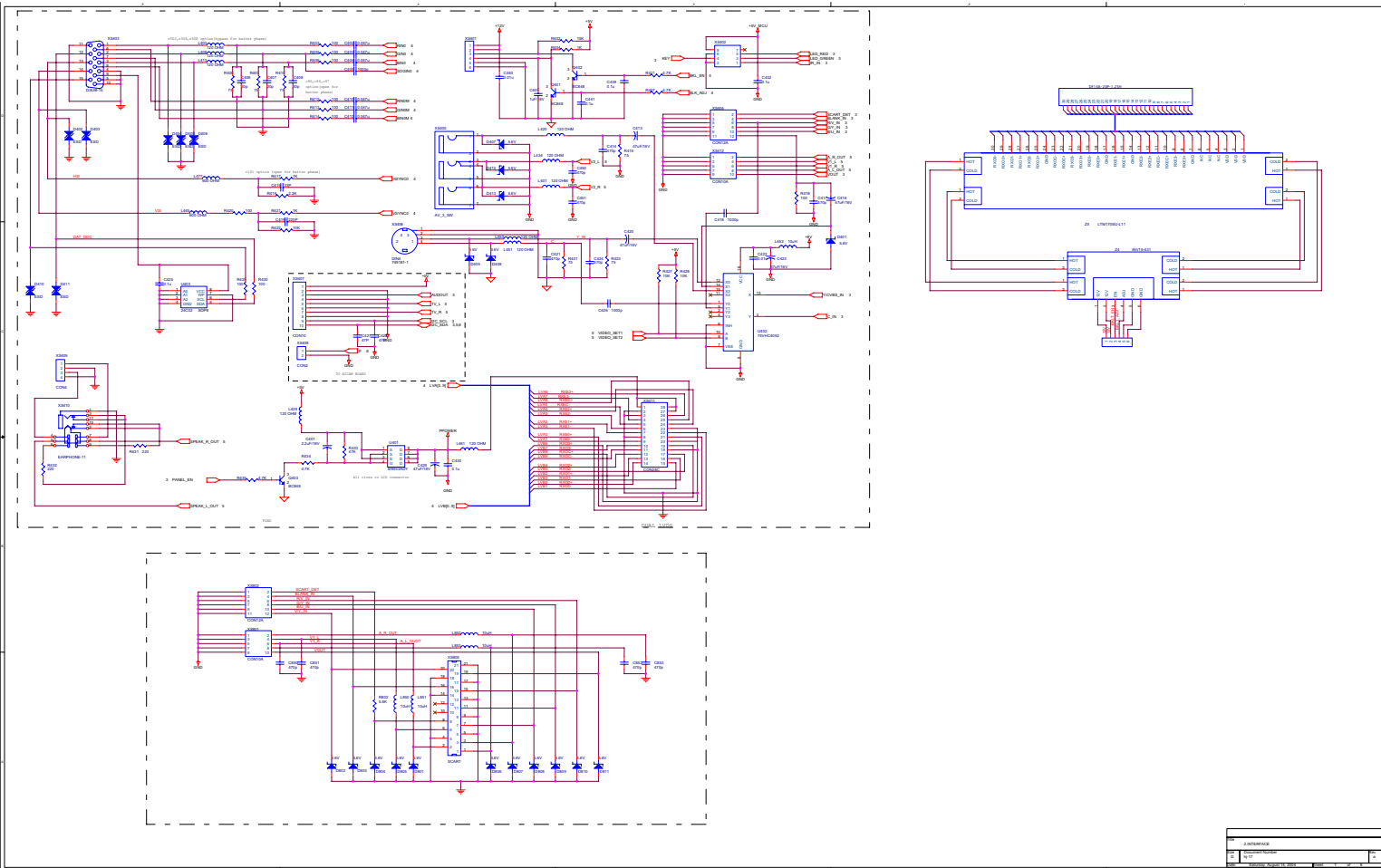


# **SERVICE MANUAL**

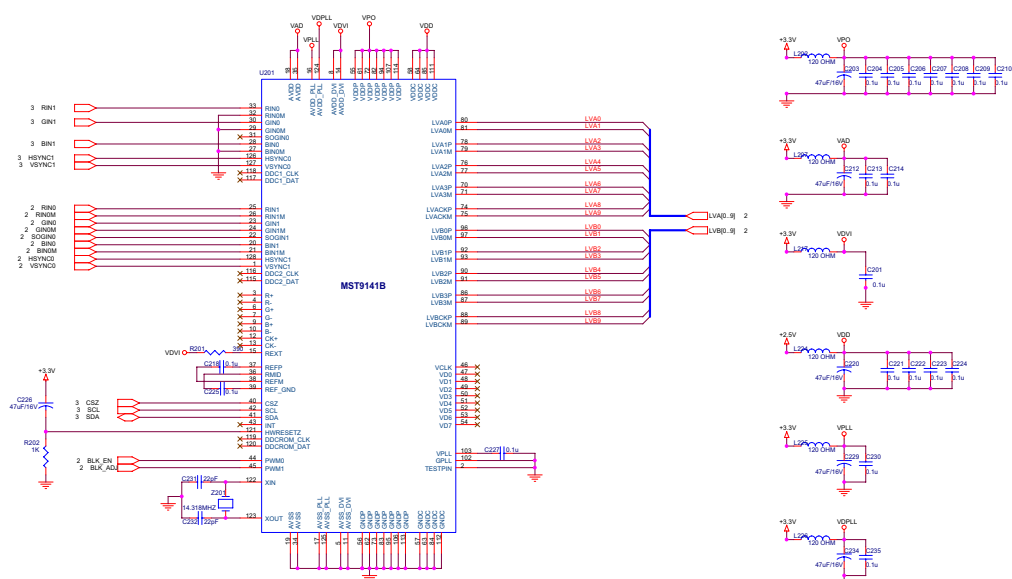
15" TFT-LCD COLOUR TV/MONITOR

# BLOCK DIAGRAM

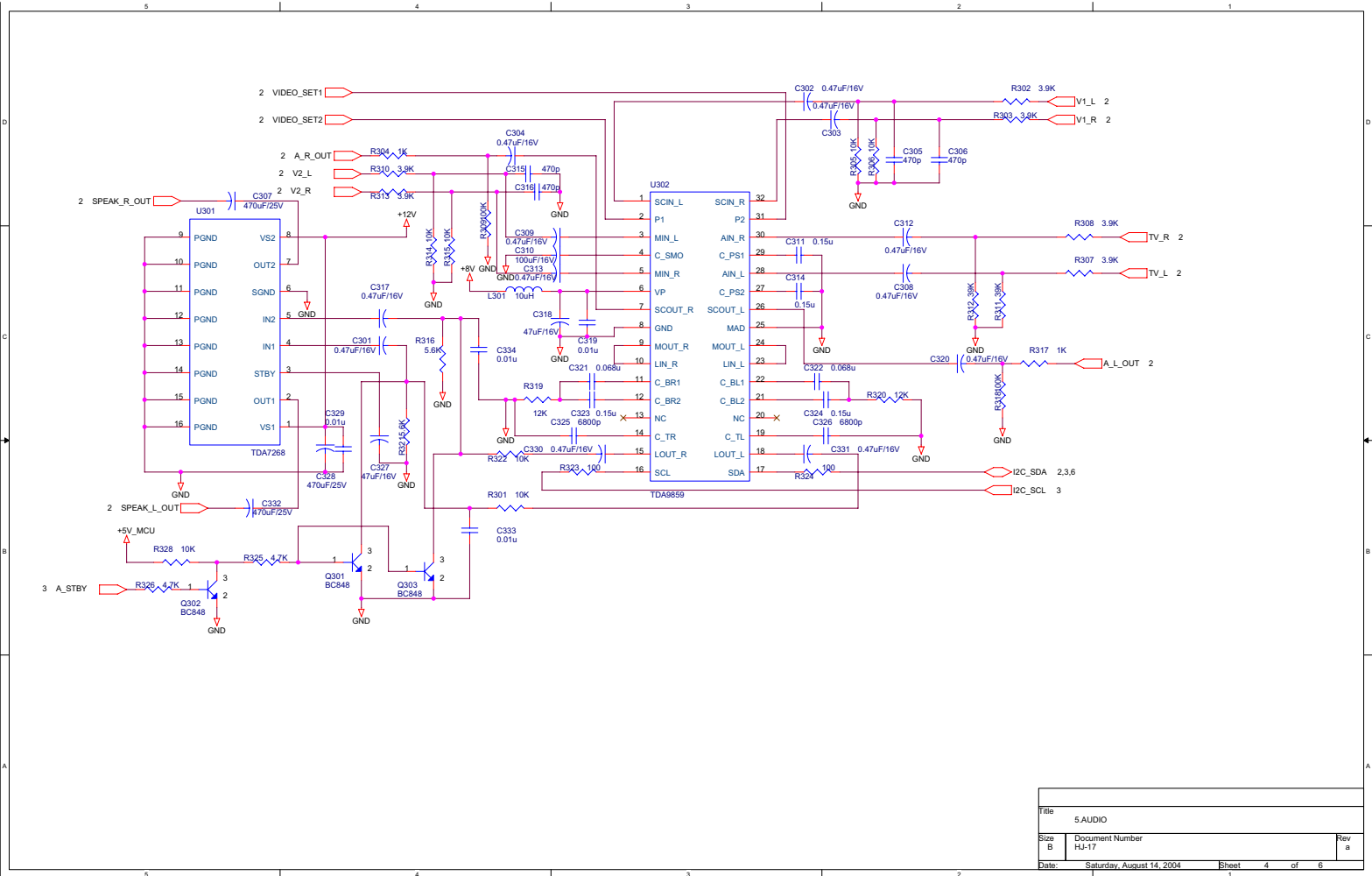


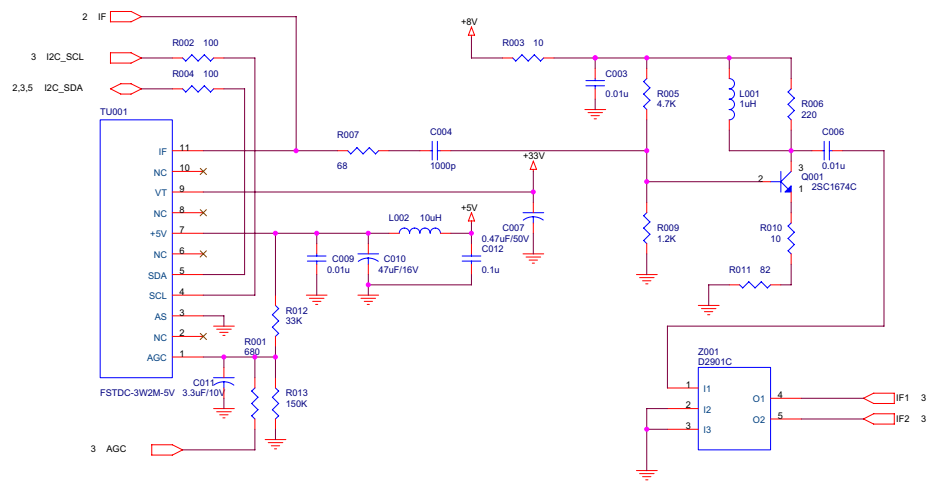




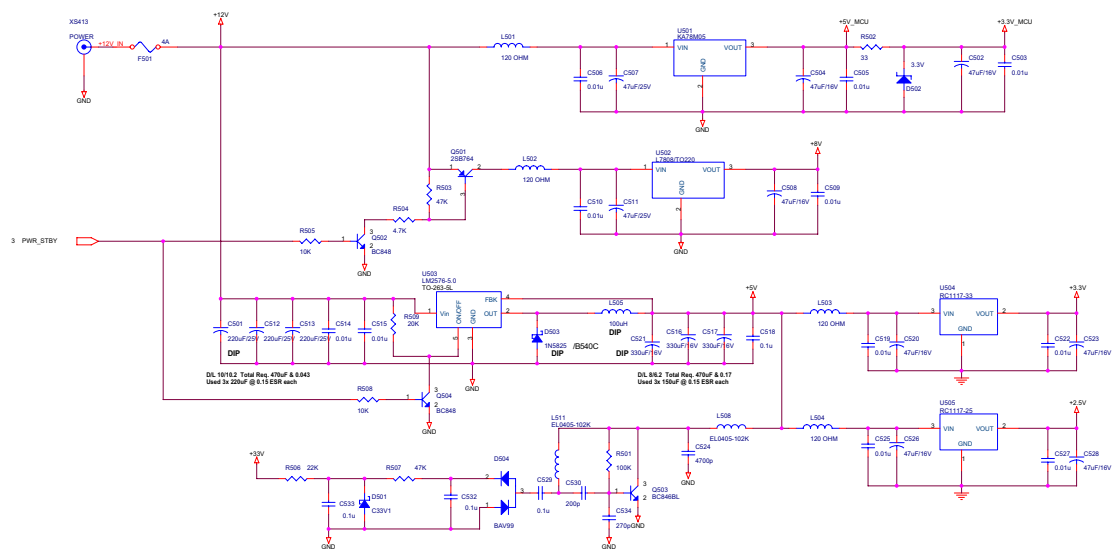


Title		
4. SCALER		
Rev	Document Number	Rev
C	14177	1
Date: Wednesday, August 14, 2008		
Sheet	3	of 6



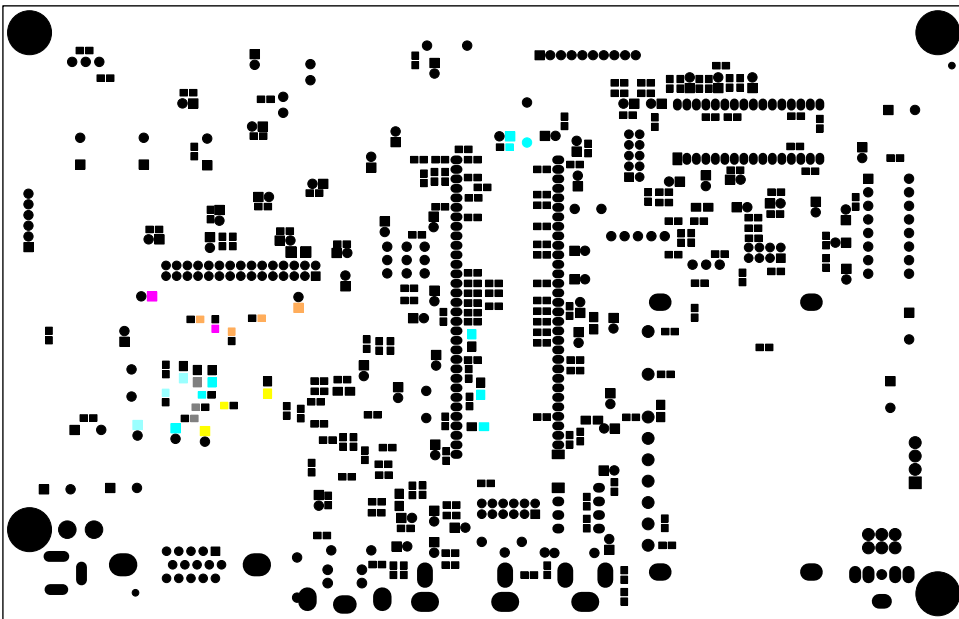


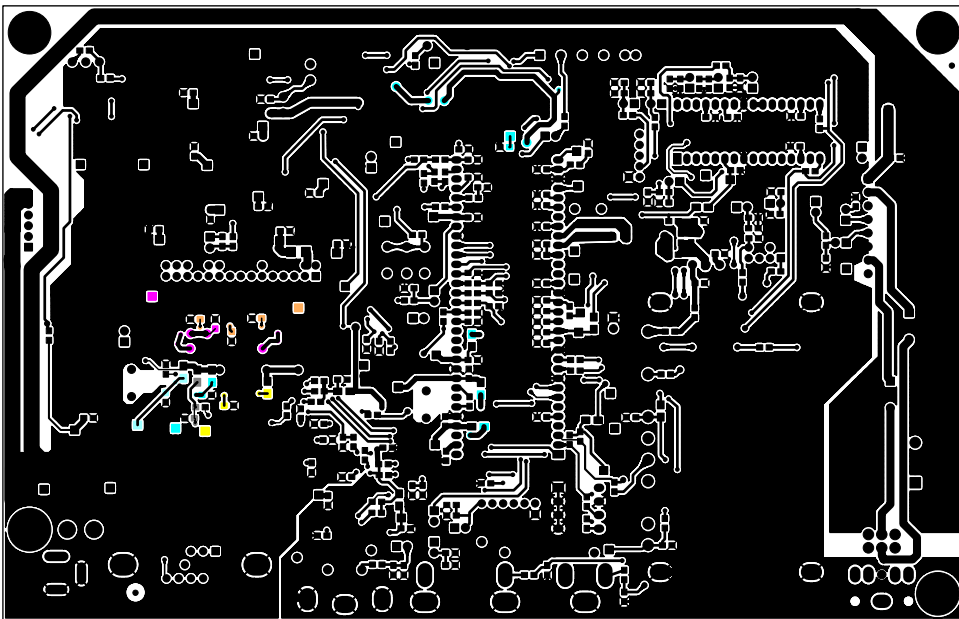
Title		
6.TUNER		
Size	Document Number	Rev
B	HJ-17	a
Date:	Wednesday, August 04, 2004	Sheet 5 of 6

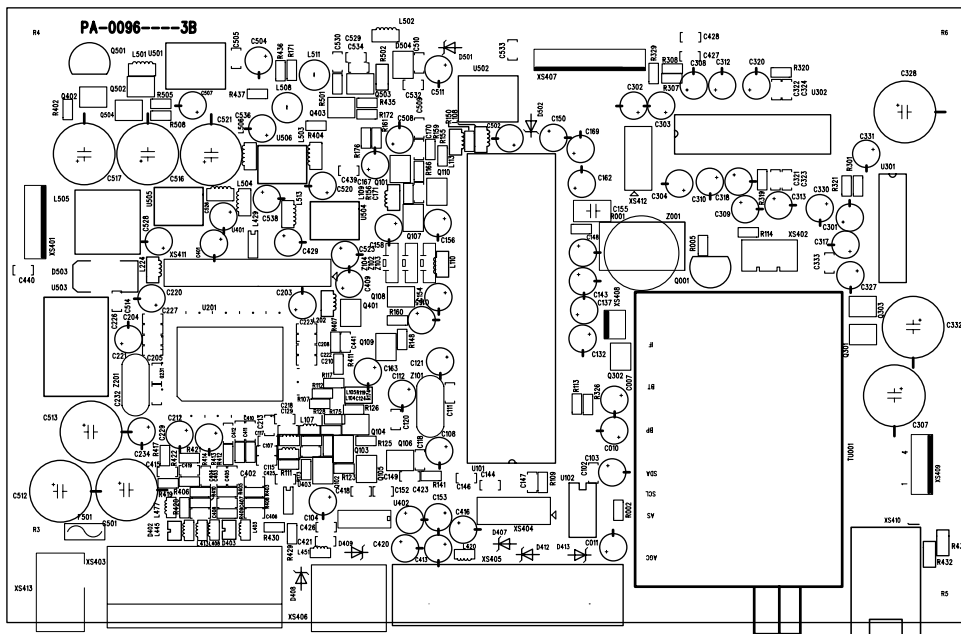


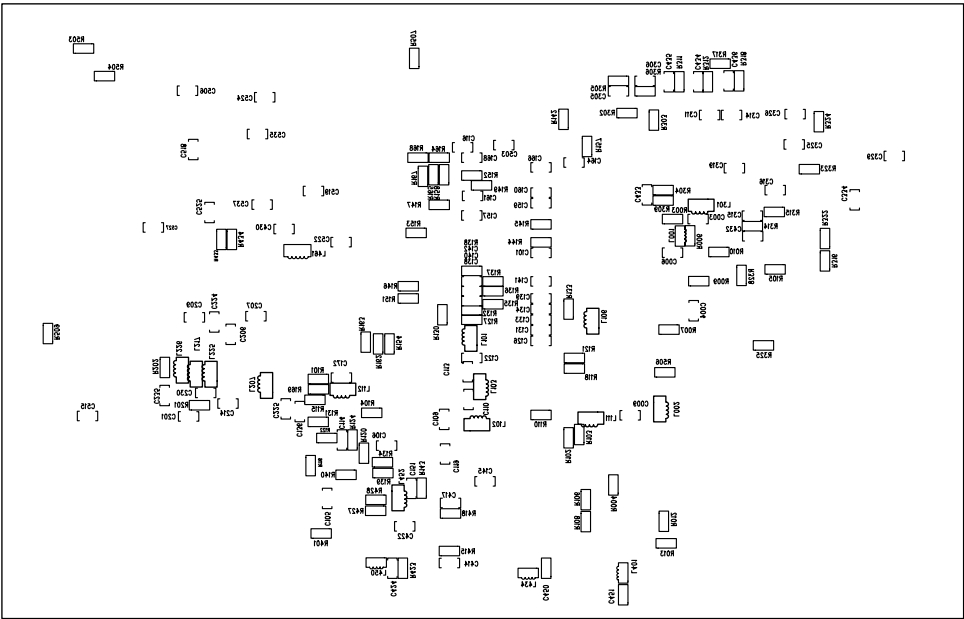
Title		7 POWER
Doc C	Document Number	7-17
Date	Released	August 14, 2004

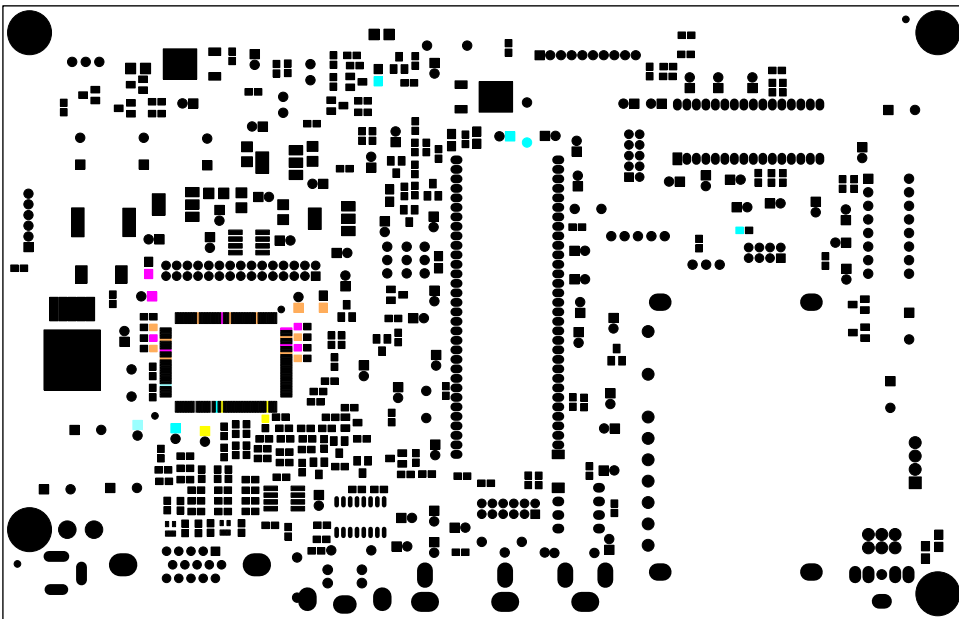


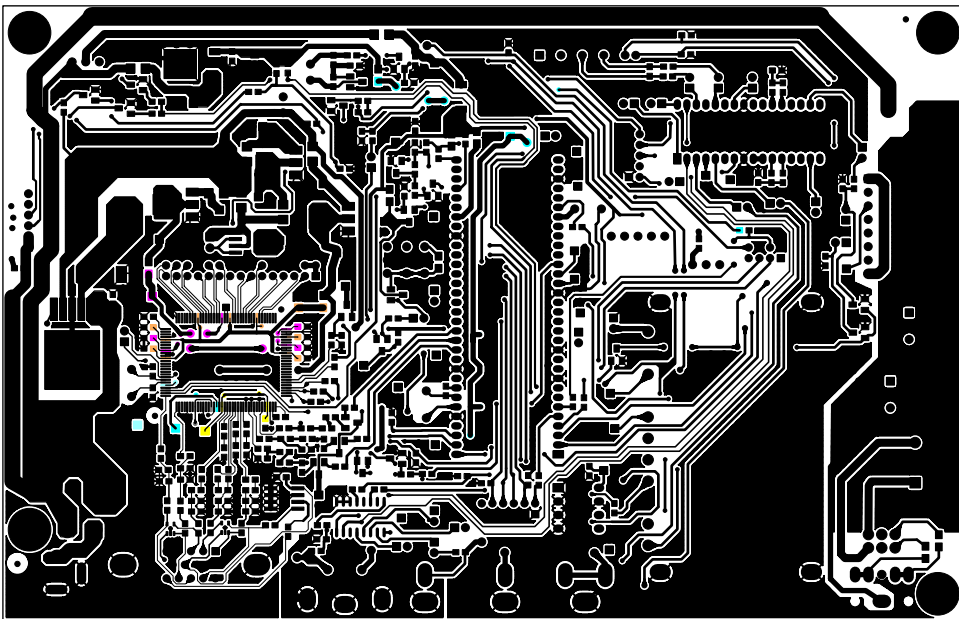




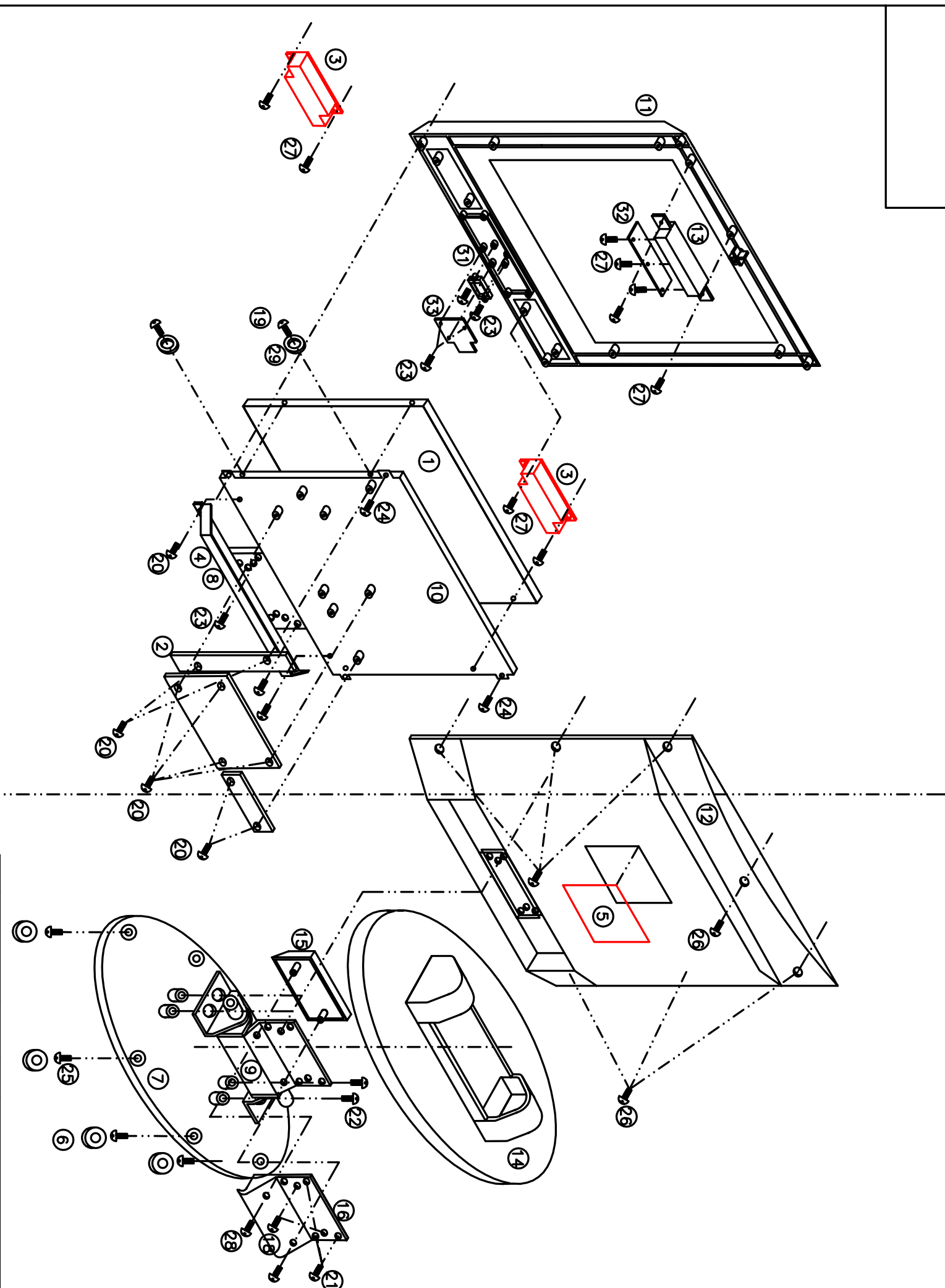








pa-0096-3.pcb - Mon Aug 23 20:10:19 2004



## BOM LIST FOR EXPLODE DIAGRAM

NO.	COMPONENT CODE	NAME	QTY
1	BFG0002A-----AS	LCD	1
2	BPA0002A-----	INVERSE TRANSFORMER	1
3	BXJ0006-----	SPEAKER BOXES	2
4	MAOX0122-----AO	FUNCTION PVC LABEL	1
5	MAOX0124-----AO	BACK PANEL BOARD	1
6	MARX0002-----A1	RUBBER BOTTOM PAD	6
7	MBOX0031-----	IRON BOTTOM BOARD	1
8	MBOX0046-----	JACK BOARD	1
9	MBOX0035-----	AXLE COMPONENTS	1
10	MBOX0037-----	PANEL STAND	1
11	MDCB01A-----	FRONT PANEL	1
12	MDCA02P-----	BACK PANEL	1
13	MDCB02A-----	KEYS SHELF	1
14	MDQD07A-----	BOTTOM COVER	1
15	MDQD08A-----	REVOLVING ARM'S FRONT COVER	1
16	MDQD09A-----	REVOLVING ARM'S BACK COVER	1
17			
18	SCA-30010FE-----	SCREW M3*10	2
19	SLA-306ROFE-----H	SCREW ST3*6	4
20	SCAC308ROFD-----	SCREW M3*6	10
21	SCAC40012FE-----	SCREW M4*12	4
22	SCAC408ROFE-----	SCREW M4*8	4
23	SLA-30010FE-----	SCREW ST3*10	9
24	SLA-40012FE-----	SCREW ST4*12	4
25	SLC-308ROFF-----H	SCREW ST3*8	6
26	SQA-30010FA-----H	SCREW ST3*10	7
27	SQA-308ROFE-----H	SCREW ST3*8	9
28	SLA-30010FF-----	SCREW ST3*10	2
29	SXW1A30-----FE----H	WASHER D3	4
30			
31	MDQR05A-----	POWER KEYS SHELF	1
32		KEY PCB	1
33		REMOTE PCB	1
34			
35			
36			
37			



# Specifications

Screen size, visible			15 inch
Screen format			4:3
Resolution			1024 * 768
Minimum contrast ratio			600:1 or better
Minimum brightness			250 cd/m <sup>2</sup> or better
Display colors			16M
Minimum viewing angle			130° (horizontal) / 100° (vertical) or better
Maximum response Time			16 ms or faster
Minimum lifetime background light			50,000 hours
Video color systems			PAL/NTSC3.58/NTSC4.43/SECAM
TV (optional) FUNCTION	TV (optional) Standard		BG/I/DK
	TV (optional) tuning system		Auto Preset tuning
	Tuner		Integrated and frequency synthesis
	CATV-- optional		S1~S41 ch, Hyper Band
	Minimum number of channels		200
	Videotext / Teletext		10 page storage, pan European standard
	Stereo systems (Optional)		Nicam-BG, I,DK/GR-GB, A2 for B/G/D/K
Terminals	Video		Composite video *1
	S-Video		S-video *1
	PC		1
	Audio L		1
	Audio R/MONO		1
	Scart	Input	Composite video, S-Video, RGB, Audio L+R
		Output	Composite video, Audio
Headphone jack			3.5 mm Φ jack ( Rear)
OSD language			English//French/Russian/Turkish/Farsi/Arabic /Italian/German
Game			Box man
Calendar			1900~2100
Audio output			1.5W * 2
Standard			CE etc.
Dimension			49 x 22 x 48cm
Gross weight			5.8 Kg
Power requirement			DC 12V 4A, AC110~240V, 50/60Hz
Power Consumption			Max 40W
Standby Power Consumption			Max 3W
Accessories			Remote Control, AC adapter, AC cord, Operation Manual