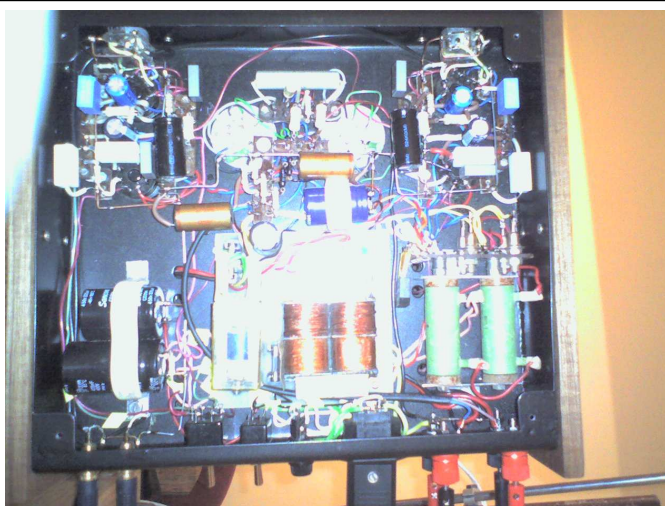
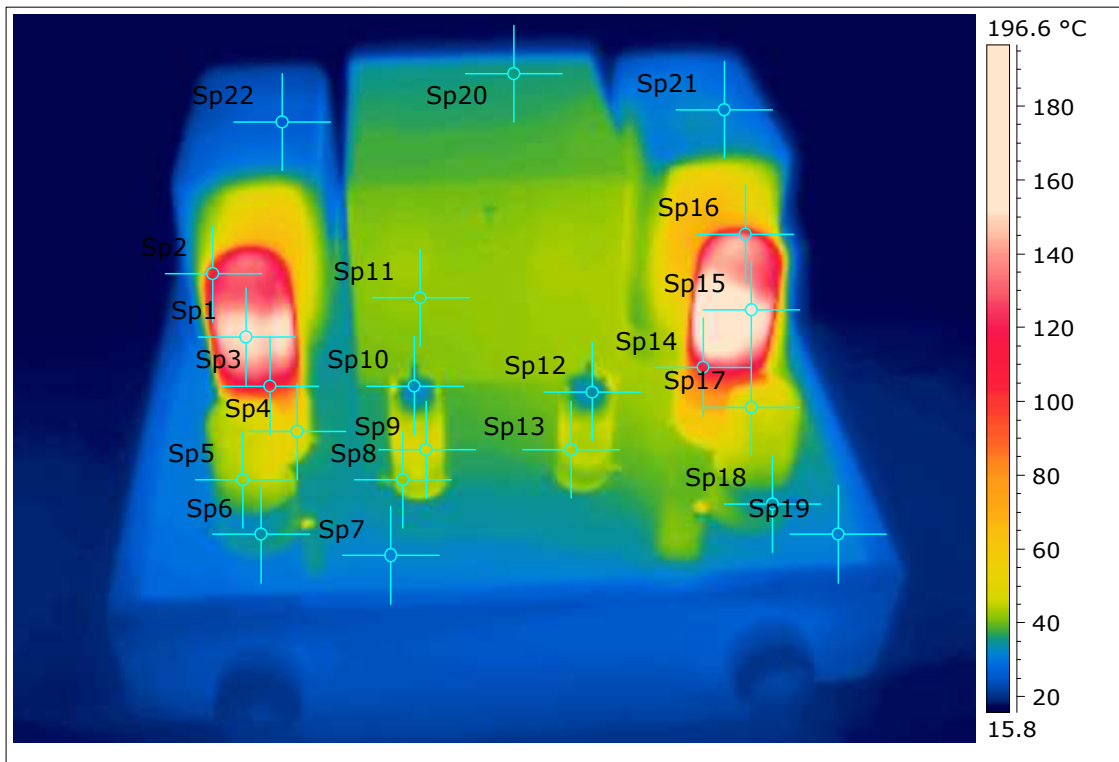


Инфракчервена термодиагностика на лампов нискочестотен усилвател изпълнен по схемата на А.Манаков с лампи 6ПЗС,6Н9С,ЕМ84. Измерването е извършено с инфрачервена камера модел FLIR – T-400 на номинален работен режим след 1 час прогряване.



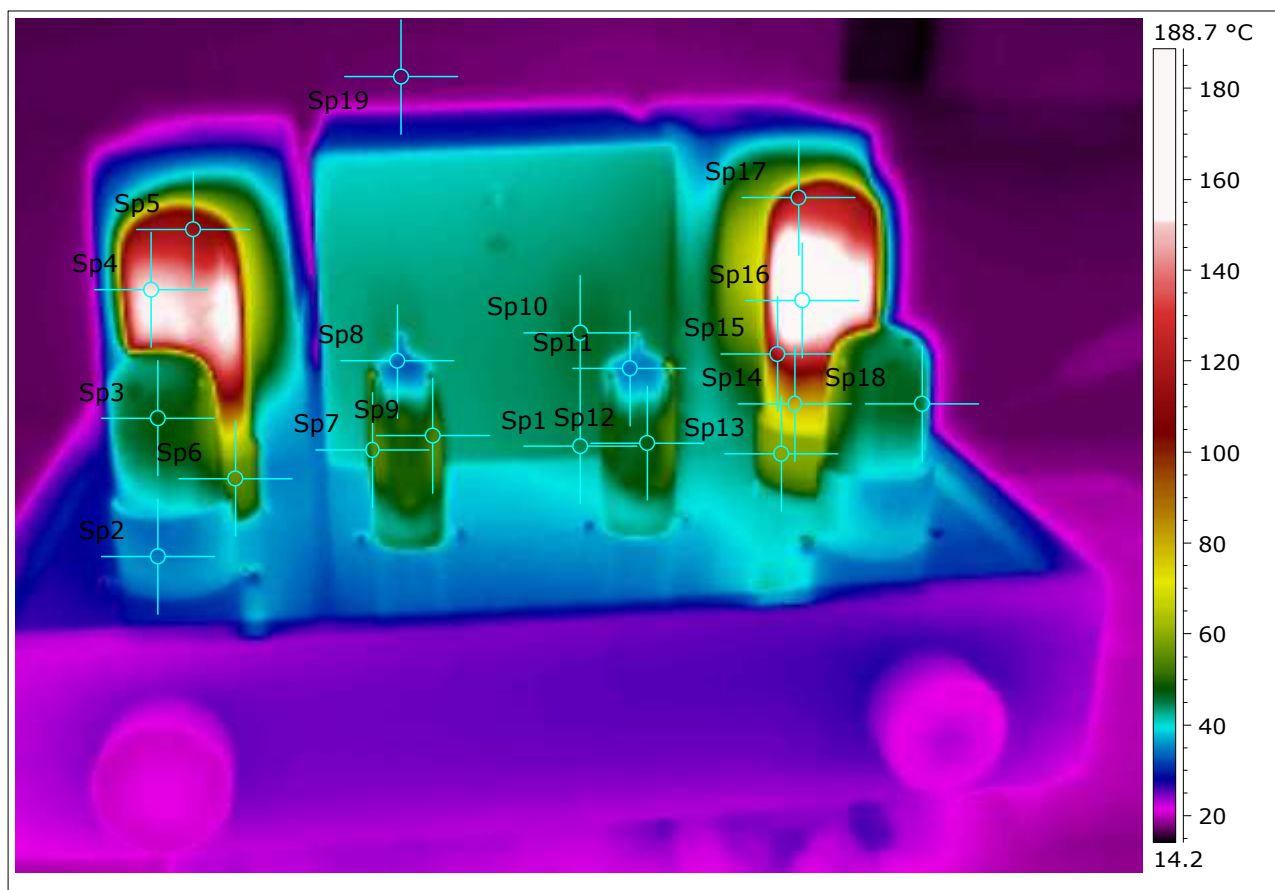


Date	29.01.2009
Filename	IR_0840.jpg
Max Temperature	>150.2 °C
Min Temperature	16.2 °C
Sp1 Temperature	>150.2 °C
Sp10 Temperature	33.4 °C
Sp11 Temperature	42.5 °C
Sp12 Temperature	33.9 °C
Sp13 Temperature	44.7 °C

Sp14 Temperature	112.0 °C
Sp15 Temperature	>150.2 °C
Sp16 Temperature	*129.9 °C
Sp17 Temperature	47.5 °C
Sp18 Temperature	34.7 °C
Sp19 Temperature	32.0 °C
Sp2 Temperature	115.7 °C
Sp20 Temperature	36.3 °C
Sp21 Temperature	31.6 °C

Sp22 Temperature	27.1 °C
Sp3 Temperature	105.3 °C
Sp4 Temperature	50.3 °C
Sp5 Temperature	43.6 °C
Sp6 Temperature	34.8 °C
Sp7 Temperature	32.2 °C
Sp8 Temperature	42.7 °C
Sp9 Temperature	46.7 °C

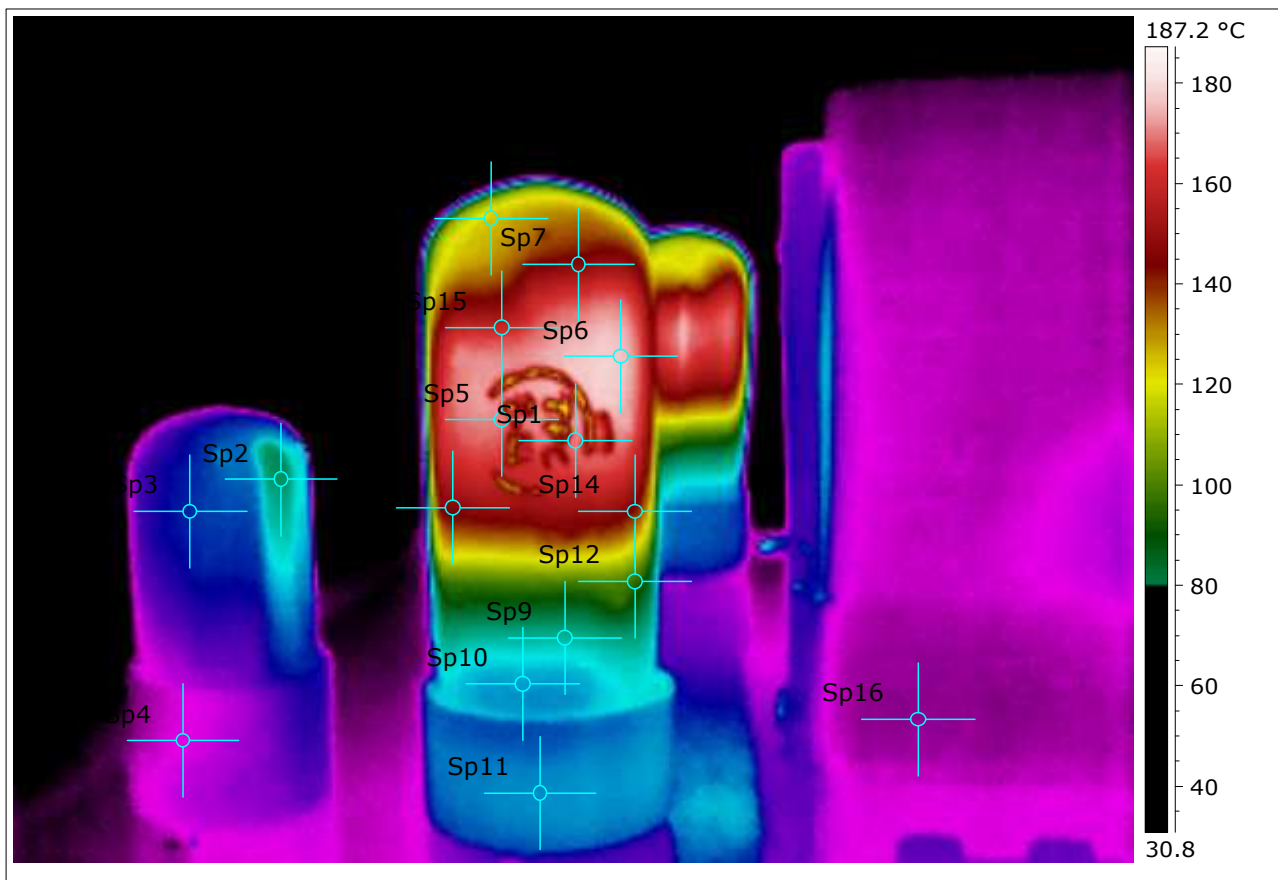




Date	29.01.2009
Filename	IR_0860.jpg
Max Temperature	>150.2 °C
Min Temperature	14.6 °C
Sp1 Temperature	44.6 °C
Sp10 Temperature	46.0 °C
Sp11 Temperature	34.8 °C
Sp12 Temperature	47.0 °C

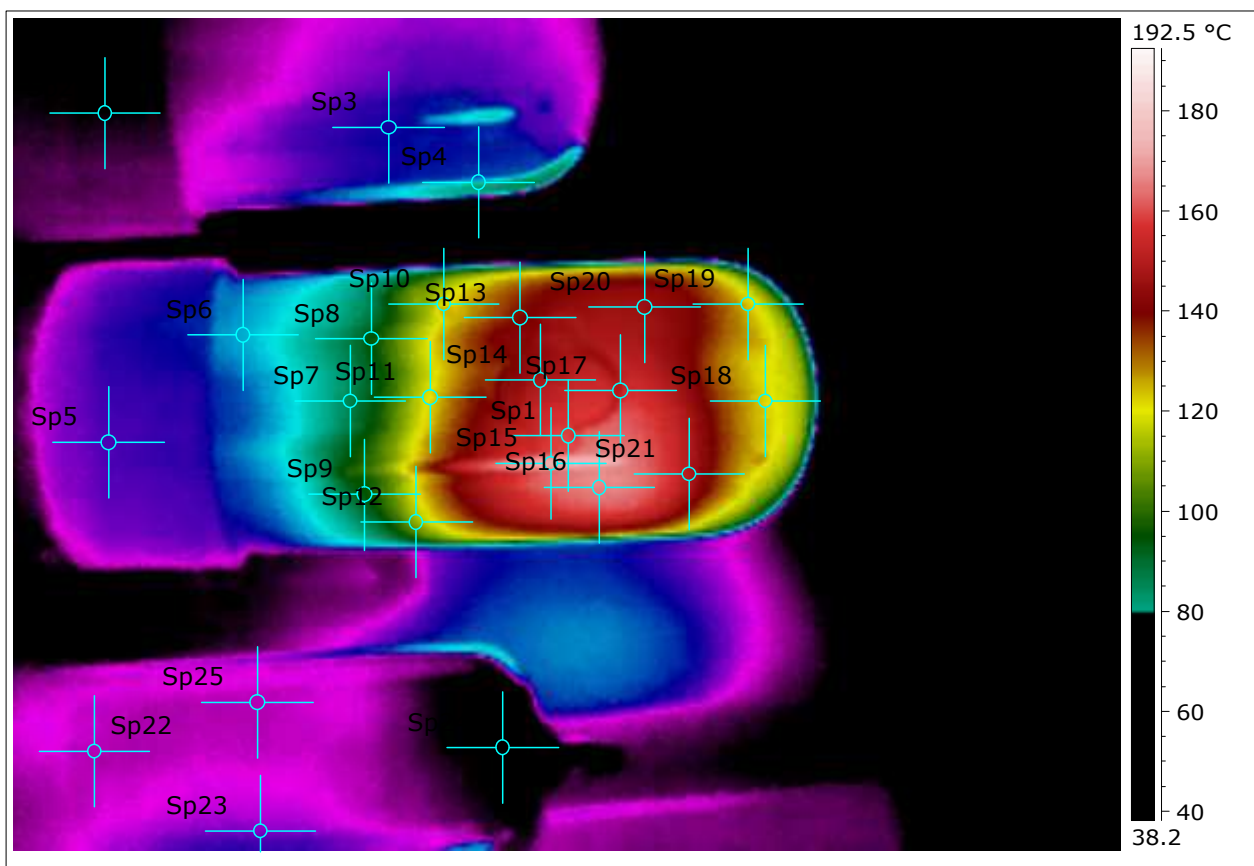
Sp13 Temperature	59.3 °C
Sp14 Temperature	79.5 °C
Sp15 Temperature	*121.1 °C
Sp16 Temperature	>150.2 °C
Sp17 Temperature	*120.9 °C
Sp18 Temperature	44.0 °C
Sp19 Temperature	17.8 °C
Sp2 Temperature	35.2 °C

Sp3 Temperature	48.0 °C
Sp4 Temperature	>150.2 °C
Sp5 Temperature	113.2 °C
Sp6 Temperature	55.4 °C
Sp7 Temperature	55.6 °C
Sp8 Temperature	34.0 °C
Sp9 Temperature	53.5 °C



Date	29.01.2009
Filename	IR_0870.jpg
Max Temperature	*178.4 °C
Min Temperature	<80.0 °C
Sp1 Temperature	*168.8 °C
Sp10 Temperature	<80.0 °C
Sp11 Temperature	<80.0 °C
Sp12 Temperature	*95.8 °C
Sp13 Temperature	*144.6 °C
Sp14 Temperature	*139.8 °C

Sp15 Temperature	*159.9 °C
Sp2 Temperature	<80.0 °C
Sp3 Temperature	<80.0 °C
Sp4 Temperature	<80.0 °C
Sp5 Temperature	*170.2 °C
Sp6 Temperature	*175.7 °C
Sp7 Temperature	*146.8 °C
Sp8 Temperature	*123.9 °C
Sp9 Temperature	<80.0 °C



Date	29.01.2009
Filename	IR_0872.jpg
Max Temperature	*173.8 °C
Min Temperature	<80.0 °C
Sp1 Temperature	*158.3 °C
Sp10 Temperature	*120.0 °C
Sp11 Temperature	*120.7 °C
Sp12 Temperature	*109.9 °C
Sp13 Temperature	*139.0 °C
Sp14 Temperature	*147.8 °C
Sp15 Temperature	*172.8 °C
Sp16 Temperature	*164.9 °C
Sp17 Temperature	*152.3 °C
Sp18 Temperature	*120.8 °C
Sp19 Temperature	*122.6 °C

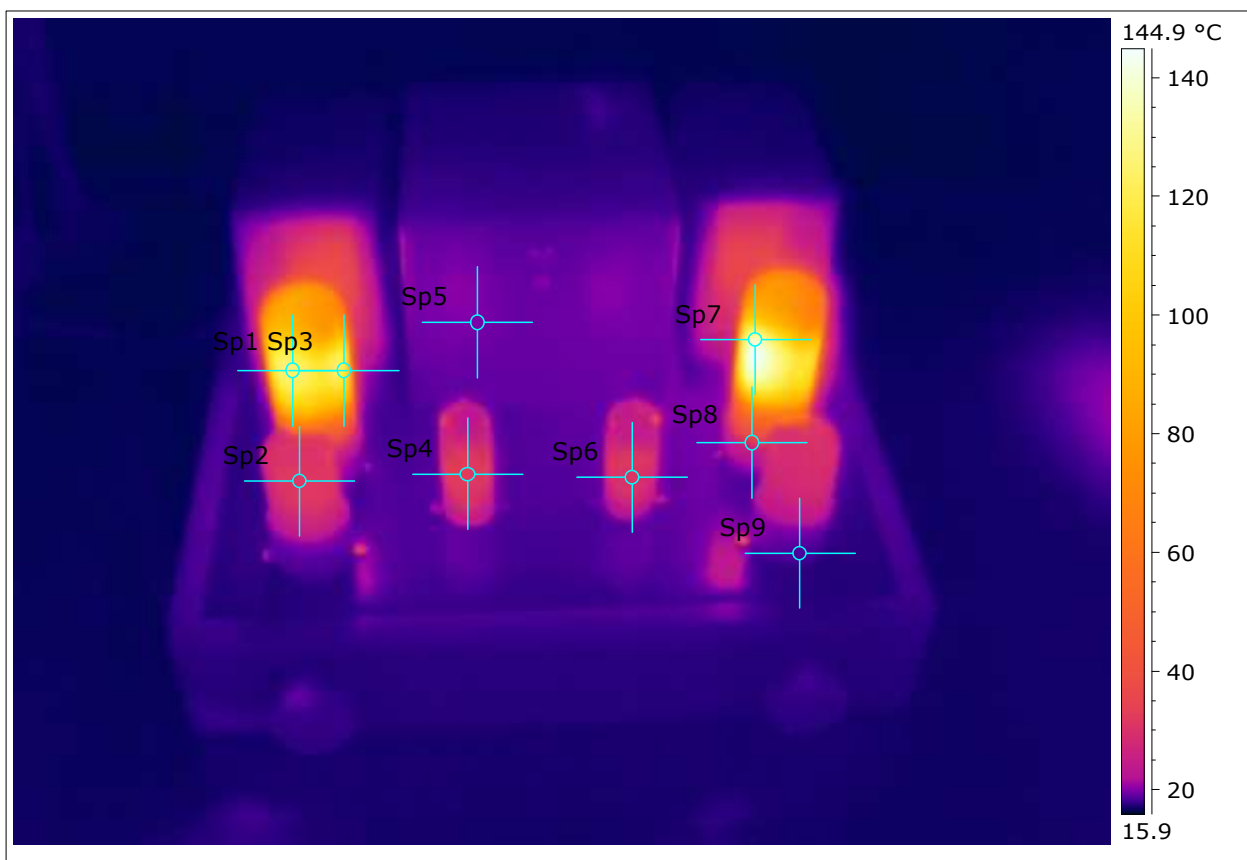
Sp2 Temperature	<80.0 °C
Sp20 Temperature	*145.4 °C
Sp21 Temperature	*147.8 °C
Sp22 Temperature	<80.0 °C
Sp23 Temperature	<80.0 °C
Sp24 Temperature	<80.0 °C
Sp25 Temperature	<80.0 °C
Sp3 Temperature	<80.0 °C
Sp4 Temperature	<80.0 °C
Sp5 Temperature	<80.0 °C
Sp6 Temperature	<80.0 °C
Sp7 Temperature	*86.5 °C
Sp8 Temperature	*96.6 °C
Sp9 Temperature	*94.2 °C



Date	29.01.2009
Filename	IR_0852.jpg
Max Temperature	99.1 °C
Sp7 Temperature	71.4 °C
Sp8 Temperature	25.7 °C

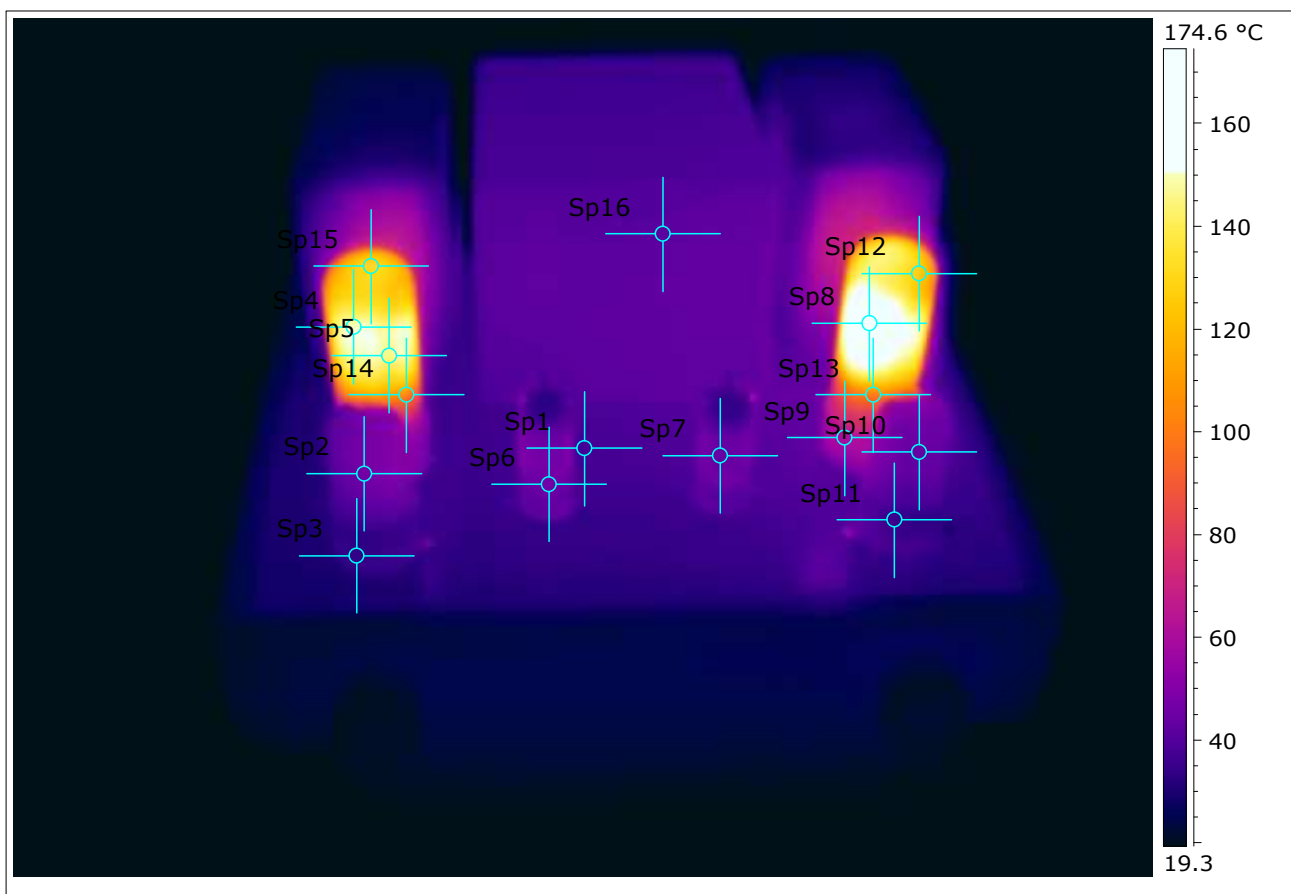
Min Temperature	15.7 °C
-----------------	---------

Sp9 Temperature	22.8 °C
-----------------	---------



Date	29.01.2009
Filename	IR_0772.jpg
Max Temperature	*146.3 °C
Min Temperature	16.4 °C
Sp1 Temperature	*125.5 °C
Sp2 Temperature	31.7 °C
Sp3 Temperature	119.7 °C

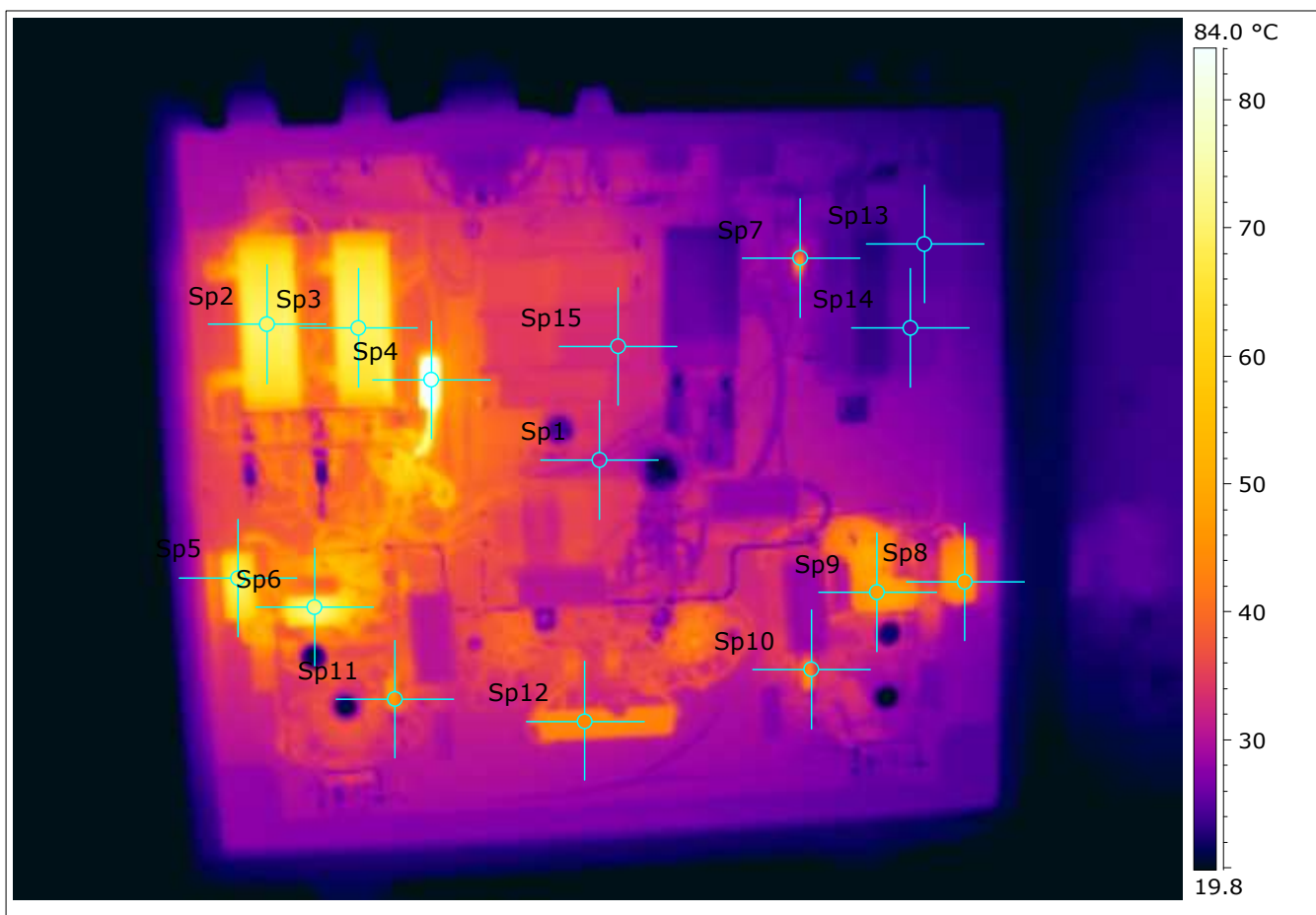
Sp4 Temperature	32.6 °C
Sp5 Temperature	19.9 °C
Sp6 Temperature	30.6 °C
Sp7 Temperature	*137.8 °C
Sp8 Temperature	30.8 °C
Sp9 Temperature	18.8 °C



Date	29.01.2009
Filename	IR_0832.jpg
Max Temperature	>150.2 °C

Min Temperature	16.8 °C
-----------------	---------





Date	29.01.2009
Filename	IR_0794.jpg
Max Temperature	105.1 °C
Min Temperature	15.2 °C
Sp1 Temperature	31.3 °C
Sp10 Temperature	40.4 °C
Sp11 Temperature	47.9 °C
Sp12 Temperature	43.6 °C
Sp13 Temperature	24.7 °C
Sp14 Temperature	25.4 °C

Sp15 Temperature	33.1 °C
Sp2 Temperature	69.2 °C
Sp3 Temperature	69.4 °C
Sp4 Temperature	103.1 °C
Sp5 Temperature	69.6 °C
Sp6 Temperature	72.1 °C
Sp7 Temperature	44.8 °C
Sp8 Temperature	47.3 °C
Sp9 Temperature	48.0 °C